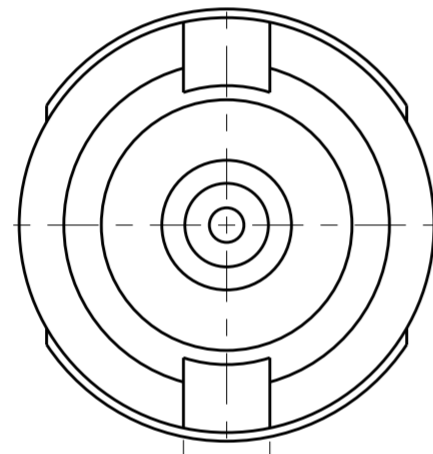


THIS DRAWING IS UNPUBLISHED.		RELEASED FOR PUBLICATION	20
© COPYRIGHT 20 BY -		ALL RIGHTS RESERVED.	
COMPONENT	MATERIAL	FINISH	
CABLE HOUSING	STAINLESS STEEL PER 100-222-2	GOLD PLATED PER MIL-G-45204 OVER NICKEL PLATE PER QQ-N-290	
PANEL HOUSING	STAINLESS STEEL PER 100-222-2	PASSIVATE	
DIELECTRIC	PTFE FLUORCARBON PER ASTM-D-1457	NONE	
CENTER CONTACT	BERYLLIUM COPPER PER ASTM-B-196 OR 197 ALLOY C17300, COND H	GOLD PLATED PER MIL-G-45204 OVER NICKEL PLATE PER QQ-N-290	

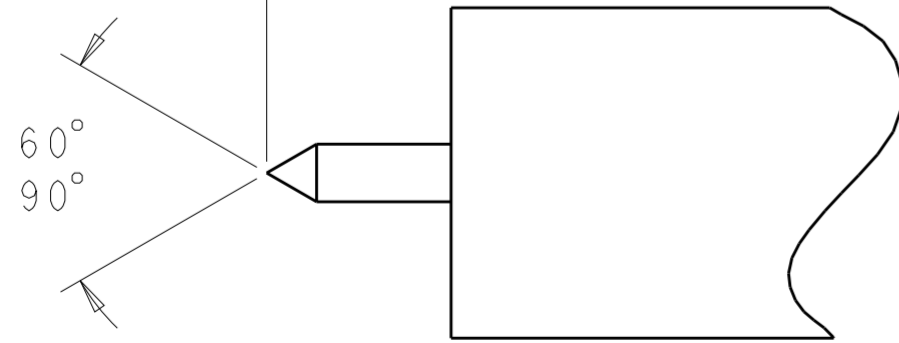
LOC	DIST	REVISIONS			
P	LTR	DESCRIPTION	DATE	DWN	APVD
-	-	A	RELEASED PER ECO-12-014852	15AUG2012	RJM3 WM

1. SMPM SMOOTH BORE INTERFACE PER MIL-STD-348A

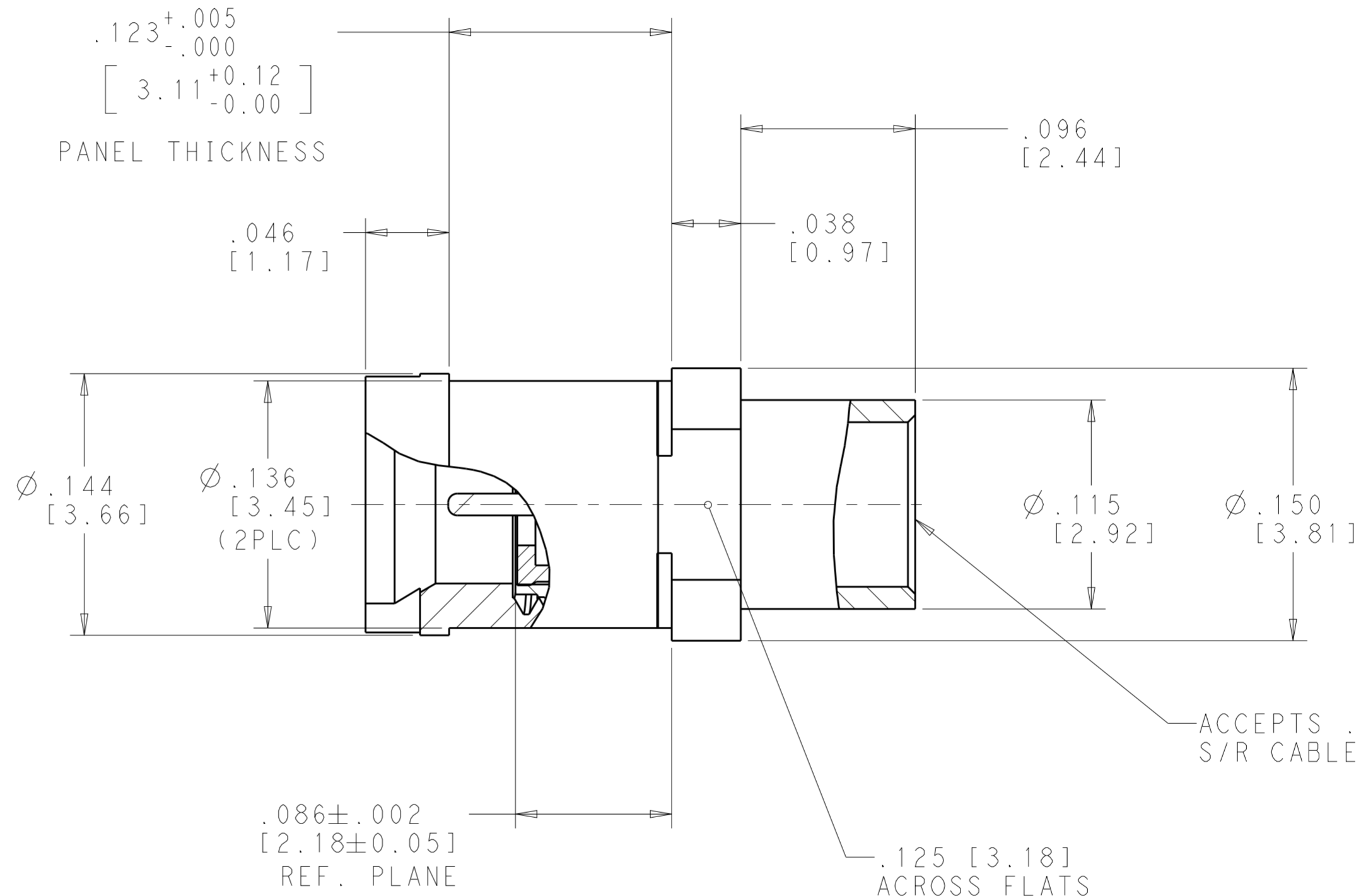


.030
[0.76]
DRIVER
SLOT

.048
[1.22]



RECOMMENDED CABLE STRIP LENGTHS



2157998-1

PART NUMBER

THIS DRAWING IS A CONTROLLED DOCUMENT.		DWN RJM3 05APR2012	STE TE Connectivity	
DIMENSIONS: INCHES [mm]		CHK W. MOYER 05APR2012		
TOLERANCES UNLESS OTHERWISE SPECIFIED:		APVD W. MOYER 05APR2012	NAME SMPM, MALE, SMOOTH BORE, BULKHEAD MOUNT FOR .086 S/R CABLE	
0 PLC ± 1 PLC ±0.1 2 PLC ±0.02 3 PLC ±0.005 4 PLC ±0.0005 ANGLES ± FINISH		PRODUCT SPEC -	SIZE CAGE CODE DRAWING NO A200779 C-2157998	
MATERIAL		APPLICATION SPEC -	RESTRICTED TO -	
-		WEIGHT -	SCALE 20:1 SHEET 1 OF 1 REV A	
-		Customer Drawing	-	