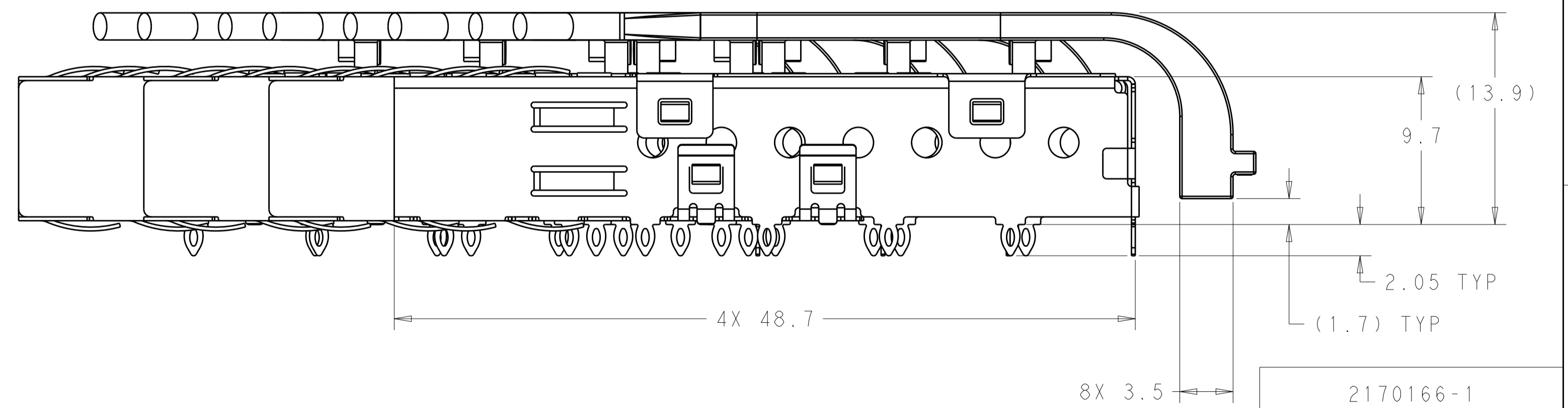
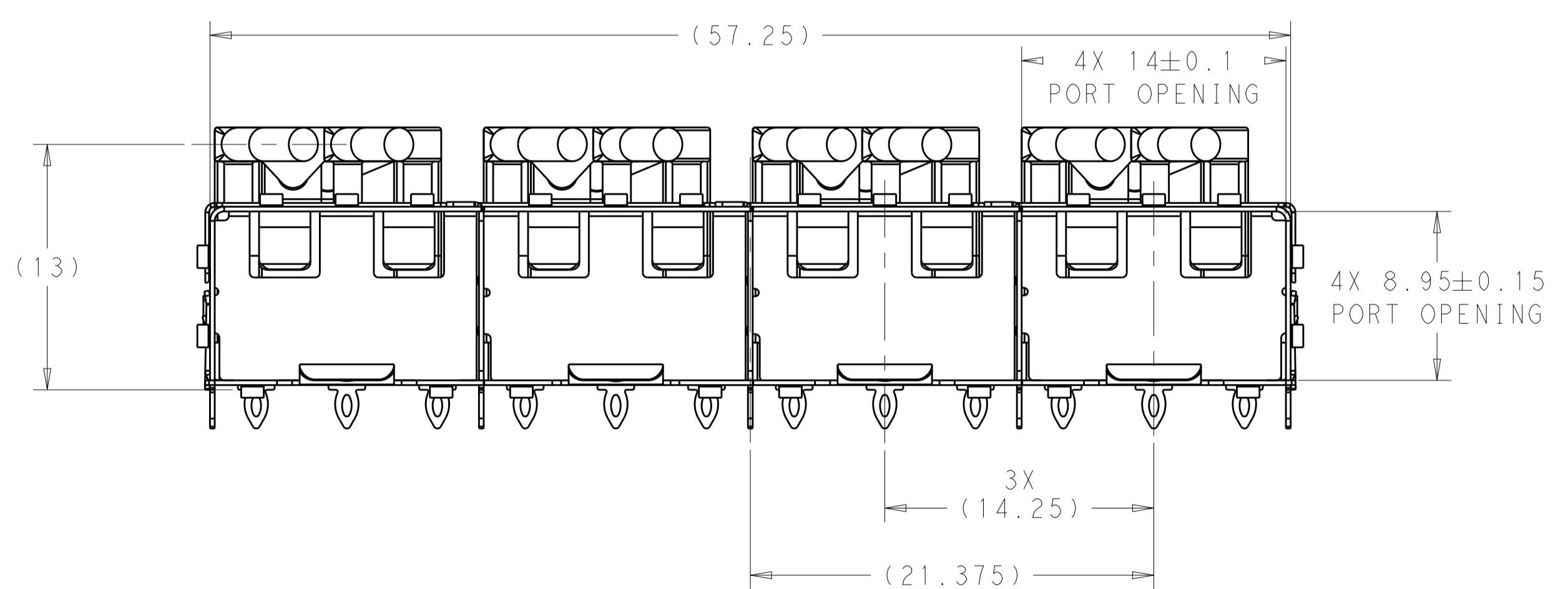
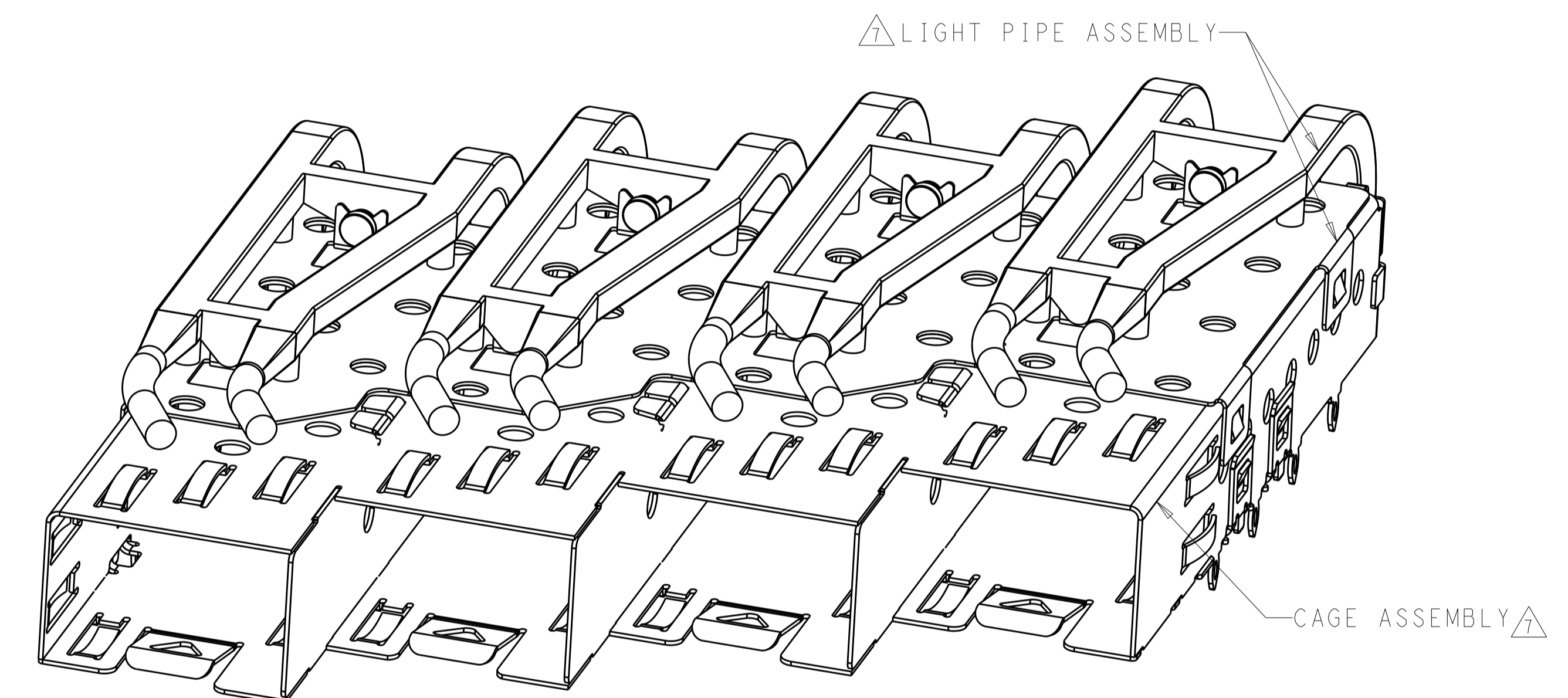
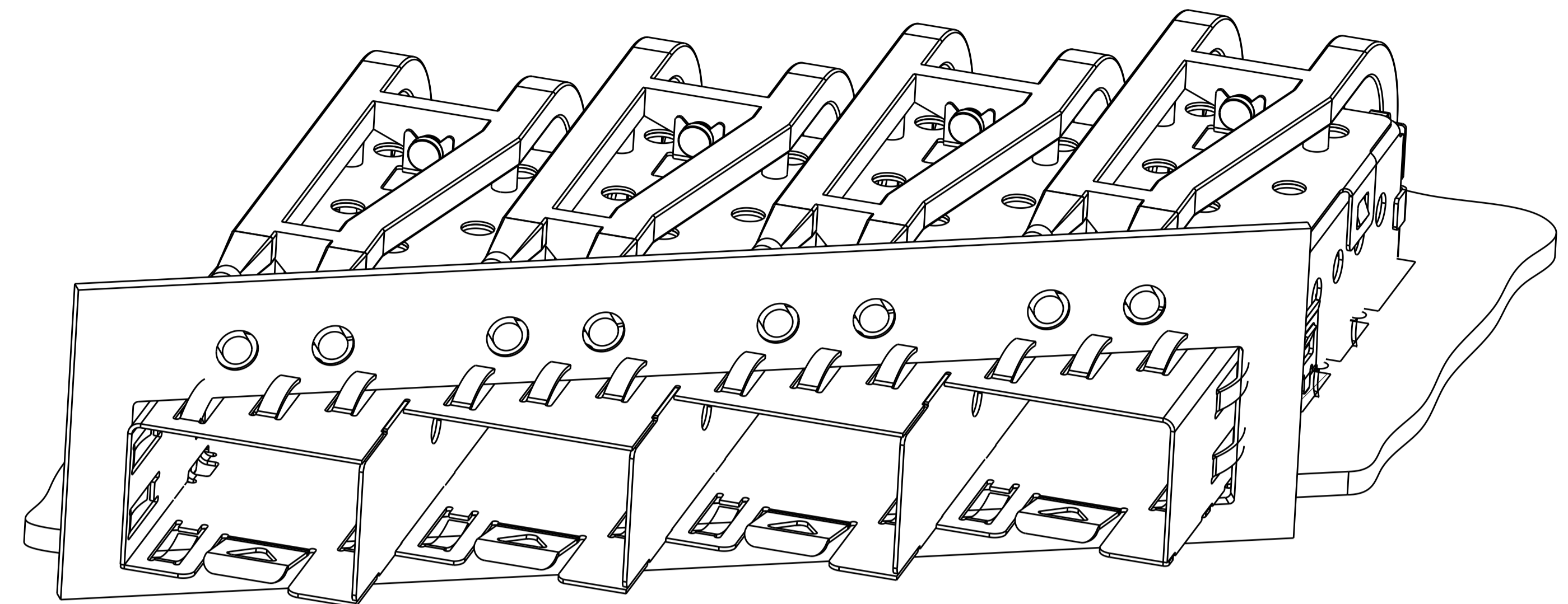
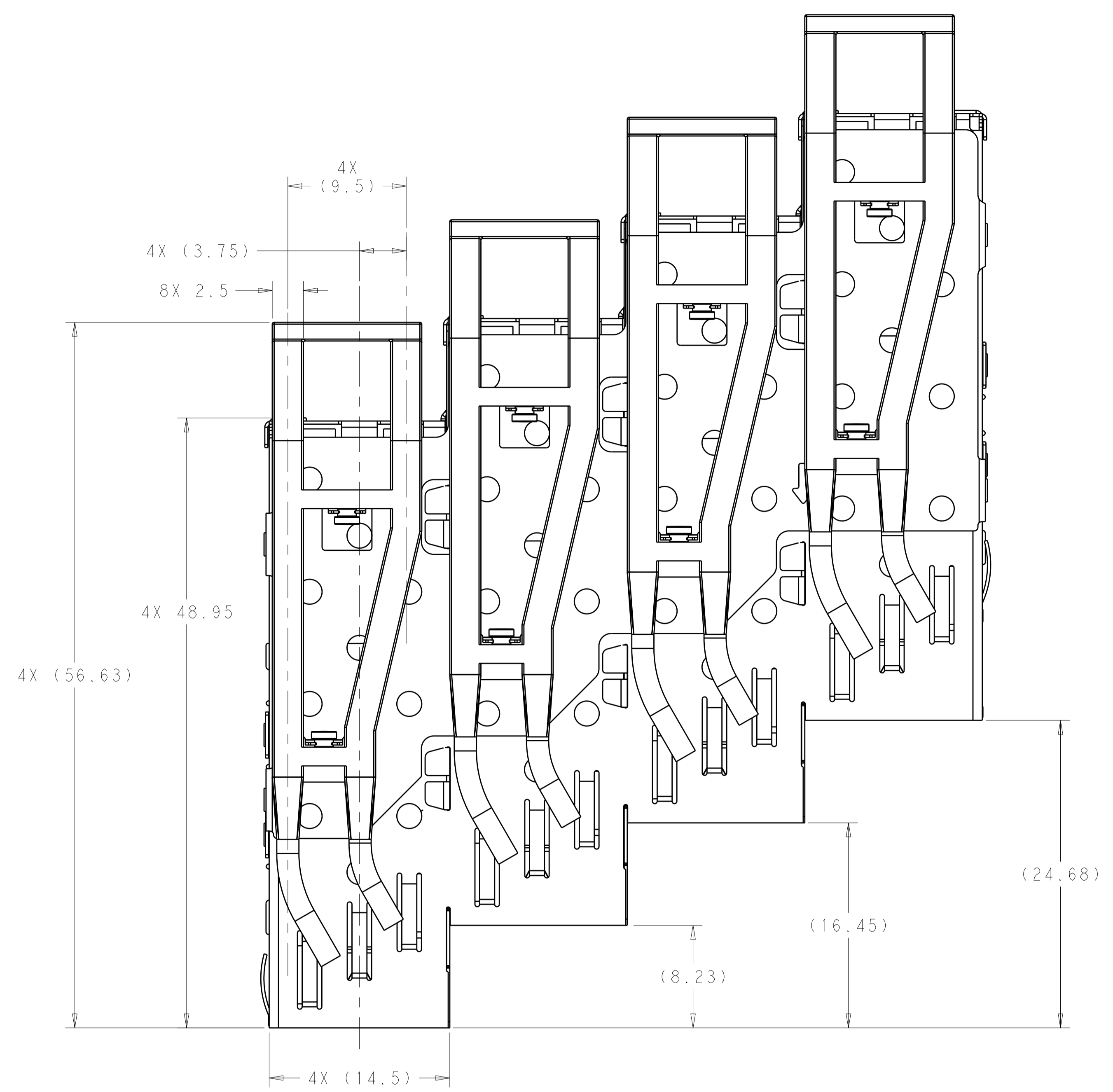


LOC		DIST		REVISIONS			
P	LTN	DESCRIPTION	DATE	DWN	APVD		
A		RELEASED	25FEB2016	JW	SH		



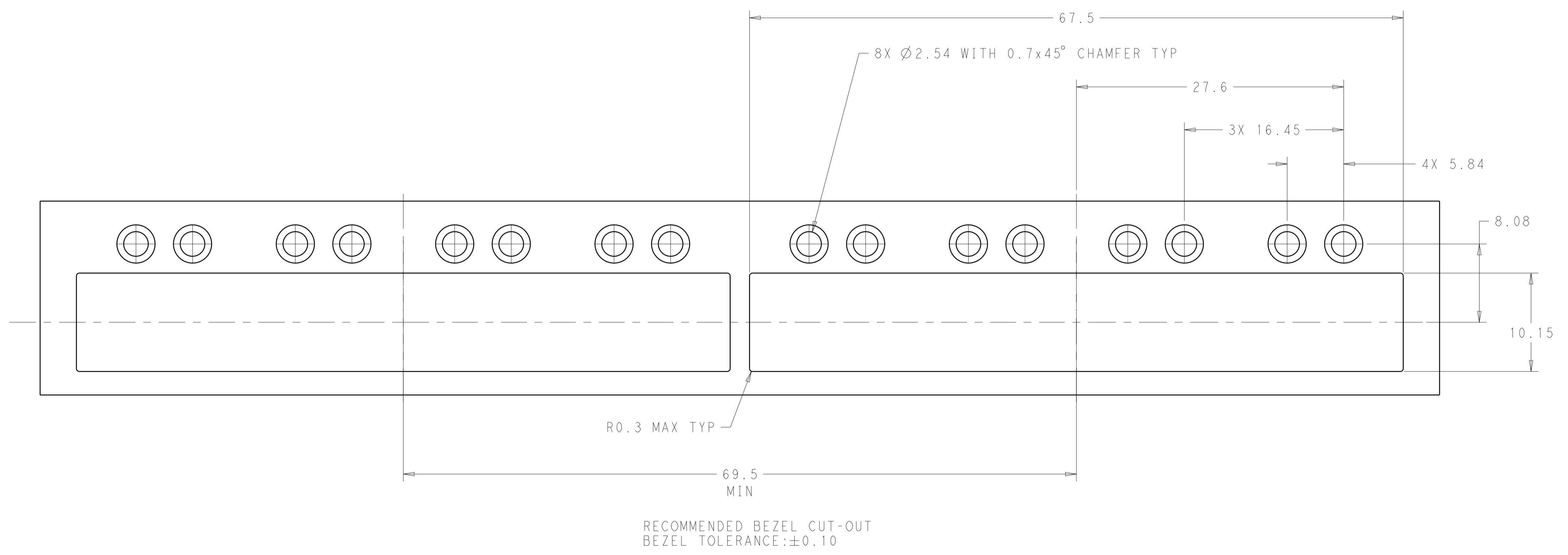
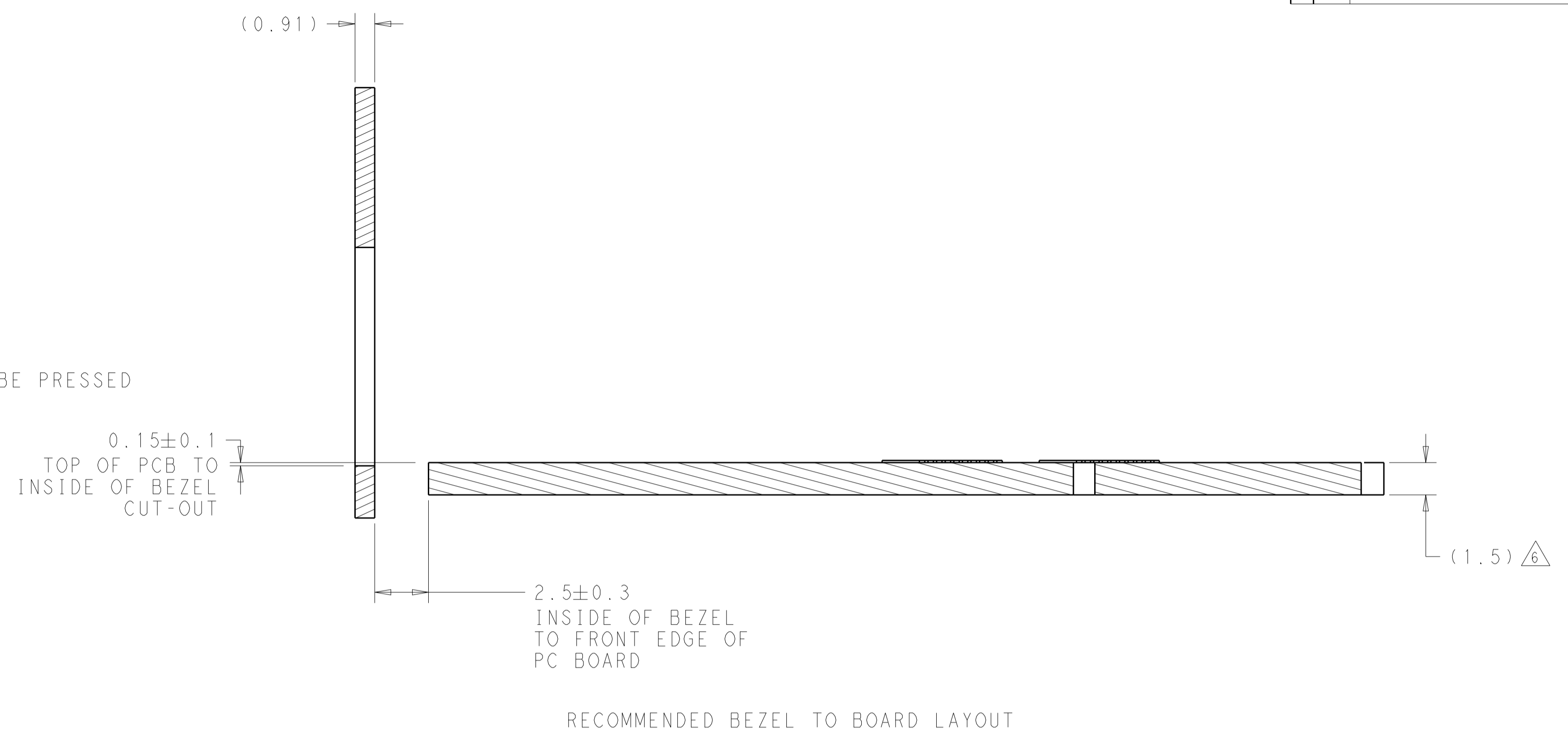
2170166-1
 PART NO.

THIS DRAWING IS A CONTROLLED DOCUMENT.		DWN: JASON YANG 02NOV2011	TE Connectivity
DIMENSIONS: mm		CHK: ALEX CAI 02NOV2011	
TOLERANCES UNLESS OTHERWISE SPECIFIED:		APVD: ALEX CAI 02NOV2011	NAME: SFP, 1X4 CAGE ASSEMBLY, 30 DEGREE, PRESS FIT, WITH LIGHT PIPES
0 PLC ±0.2		PRODUCT SPEC: 108-1950	
1 PLC ±0.2		APPLICATION SPEC: 114-13120	SIZE: CAGE CODE DRAWING NO: A100779C=2170166
2 PLC ±0.2		WEIGHT: -	
3 PLC ±0.2		CUSTOMER DRAWING	RESTRICTED TO: -
4 PLC ±0.2		SCALE: 4:1	SHEET 1 OF 3
ANGLES ±0.3		REV: A	
FINISH: -			

LOC	DIST	REV	DATE	BY	APPD
GP	00				

REVISIONS					
REV	DATE	BY	APPD	DESCRIPTION	DATE
-	-	-	-	SEE SHEET 1	-

- 1 MATERIAL:
 CAGE ASSEMBLY: 0.25mm THICK NICKEL SILVER ALLOY.
 LIGHT PIPE: POLYCARBONATE, CLEAR.
- 2 DATUM AND BASIC DIMENSIONS ESTABLISHED BY THE CUSTOMERS.
- 3. MATES WITH MSA COMPLIANT TRANSIEVERS.
- 4 PADS AND VIAS CHASSIS GROUND.
- 5 REFERENCE APPLICATION SPEC 114-13120, HOLE A, FOR RECOMMENDED DRILL HOLE DIAMETER AND PLATING THICKNESS.
- 6 MINIMUM PCB THICKNESS:
 SINGLE SIDED = 1.5mm
- 7 LIGHT PIPES ASSEMBLY SHIPPED UNASSEMBLED TO CAGE ASSEMBLY, CAGE ASSEMBLY TO BE PRESSED INTO PCB PRIOR TO ATTACHING LIGHT PIPES TO THE CAGE ASSEMBLY.



THIS DRAWING IS A CONTROLLED DOCUMENT.		DWN: JASON YANG 02NOV2011	TE Connectivity
DIMENSIONS: mm		CHK: ALEX CAI 02NOV2011	
TOLERANCES UNLESS OTHERWISE SPECIFIED: 0 PLC ±0.2 1 PLC ±0.2 2 PLC ±0.2 3 PLC ±0.2 4 PLC ±0.2 ANGLES ±°		APVD: ALEX CAI 02NOV2011	NAME: SFP, 1X4 CAGE ASSEMBLY, 30 DEGREE, PRESS FIT, WITH LIGHT PIPES
MATERIAL:		PRODUCT SPEC: 108-1950	RESTRICTED TO: -
FINISH: -		APPLICATION SPEC: 114-13120	SIZE: A1
CUSTOMER DRAWING		WEIGHT: -	CAGE CODE: 2170166
SCALE: 4:1		SHEET 2 OF 3	
REV: A		REV: A	