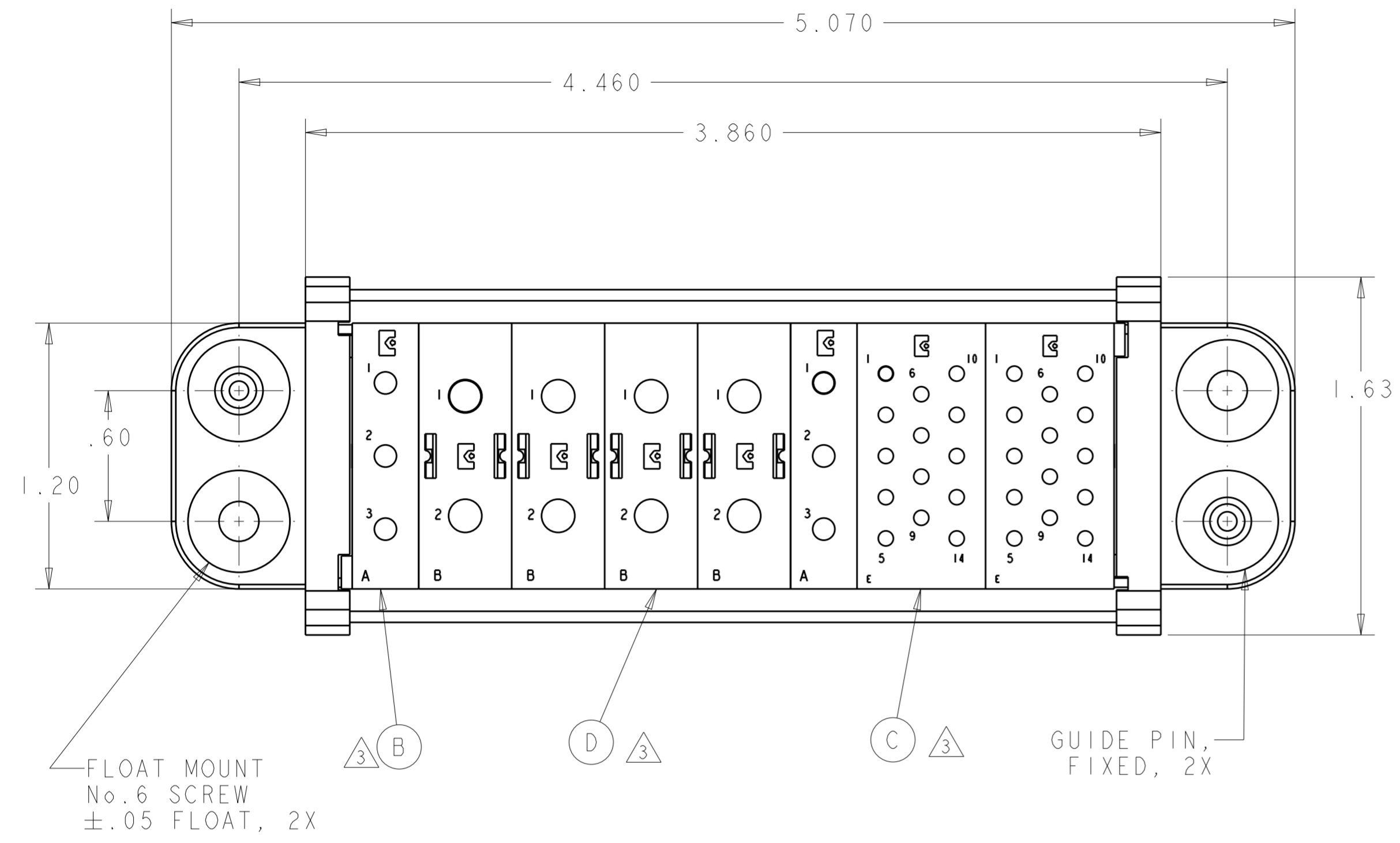


THIS DRAWING IS UNPUBLISHED. RELEASED FOR PUBLICATION 20
 © COPYRIGHT 20 BY - ALL RIGHTS RESERVED.

| LOC | DIST | REVISIONS | | | | | |
|-----|------|-----------|-----|-------------|-----------|-----|------|
| GP | 00 | P | LTR | DESCRIPTION | DATE | DWN | APVD |
| | | A | | ORIGINAL | 31OCT2012 | CJV | DPO |



1. PART NUMBER CHANGES AND/OR DESIGN CHANGES AFFECTING ITEM INTERCHANGEABILITY REQUIRE PRIOR TYCO ELECTRONICS APPROVAL AND AUTHORIZATION BY REVISION TO THIS DRAWING.

2. ITEMS PROVIDED TO THIS SPECIFICATION TO BE PERMANENTLY IDENTIFIED PER THE FOLLOWING IDENTIFIER:

TYCO ELECTRONICS P/N DATE CODE (e.g. 0212)
 XXXXXXXX-X XXXX
 YEAR WEEK

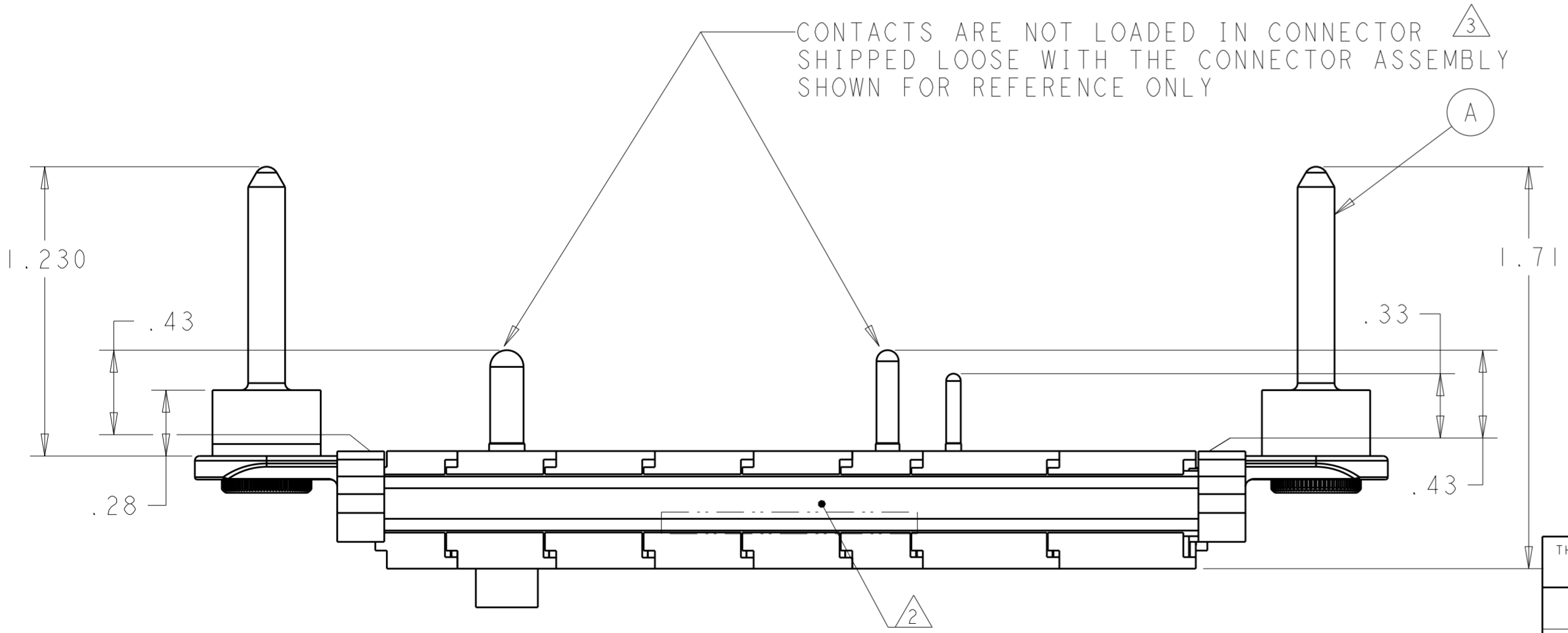
3. MODULES NOTED ARE FOR CRIMP REMOVABLE STYLE CONTACTS. ITEMS E, F AND G WILL BE PACKAGED AND SHIPPED LOOSE WITH THE CONNECTOR ASSEMBLY.

4. MOUNTING FLANGE BUSHING ACCEPTS 6/32 SCREW (.156 DIA. CLEARANCE HOLE, FLOAT MOUNT) OR 8/32 SCREW (.173 DIA. CLEARANCE HOLE, FIXED MOUNT), USER SUPPLIED.

5. CONNECTOR MATES WITH P/N 2085271-1 AND WITH ELCON EDS-10378.

6. CONNECTOR IS A REPLACEMENT FOR ELCON CONNECTOR 799-283 (EDP20378)

7. RAIL LENGTH OF (3.562 ± .005)



| | | | |
|----|-----------|----------------------------------|----------|
| 8 | 2212099-1 | PIN CONTACTS, CRIMP, SIZE No. 8 | G |
| 28 | 2212101-1 | PIN CONTACTS, CRIMP, SIZE No. 16 | F |
| 6 | 2212100-1 | PIN CONTACTS, CRIMP, SIZE No. 12 | E |
| 4 | 1648462-1 | MODULE "B" | D |
| 2 | 1648465-1 | MODULE "E" | C |
| 2 | 1648461-1 | MODULE "A" | B |
| 2 | 6648251-1 | END CAP, FLOAT MOUNT | A |
| -1 | PART NO. | DESCRIPTION | ITEM NO. |

THIS DRAWING IS A CONTROLLED DOCUMENT. DIMENSIONING AND TOLERANCING PER ASME Y14.5M-2009

DIMENSIONS: INCHES

TOLERANCES UNLESS OTHERWISE SPECIFIED:

| | |
|--------|-------|
| 0 PLC | ± |
| 1 PLC | ± |
| 2 PLC | ±.025 |
| 3 PLC | ±.010 |
| 4 PLC | ± |
| ANGLES | ± |
| FINISH | ± |

MATERIAL: -

WEIGHT: -

CUSTOMER DRAWING

APVD: D. ORRIS 31OCT2012

CHK: D. ORRIS 31OCT2012

DWN: C. VALENTINE 31OCT2012

STE TE Connectivity

NAME: PIN CONNECTOR ASSEMBLY DOMINO W/PANEL CUT-OUT

SIZE: A2 CAGE CODE: 00779 DRAWING NO: C-2212102

RESTRICTED TO: -

SCALE: 2:1 SHEET 1 OF 2 REV A

ELCON DOMINO

4

3

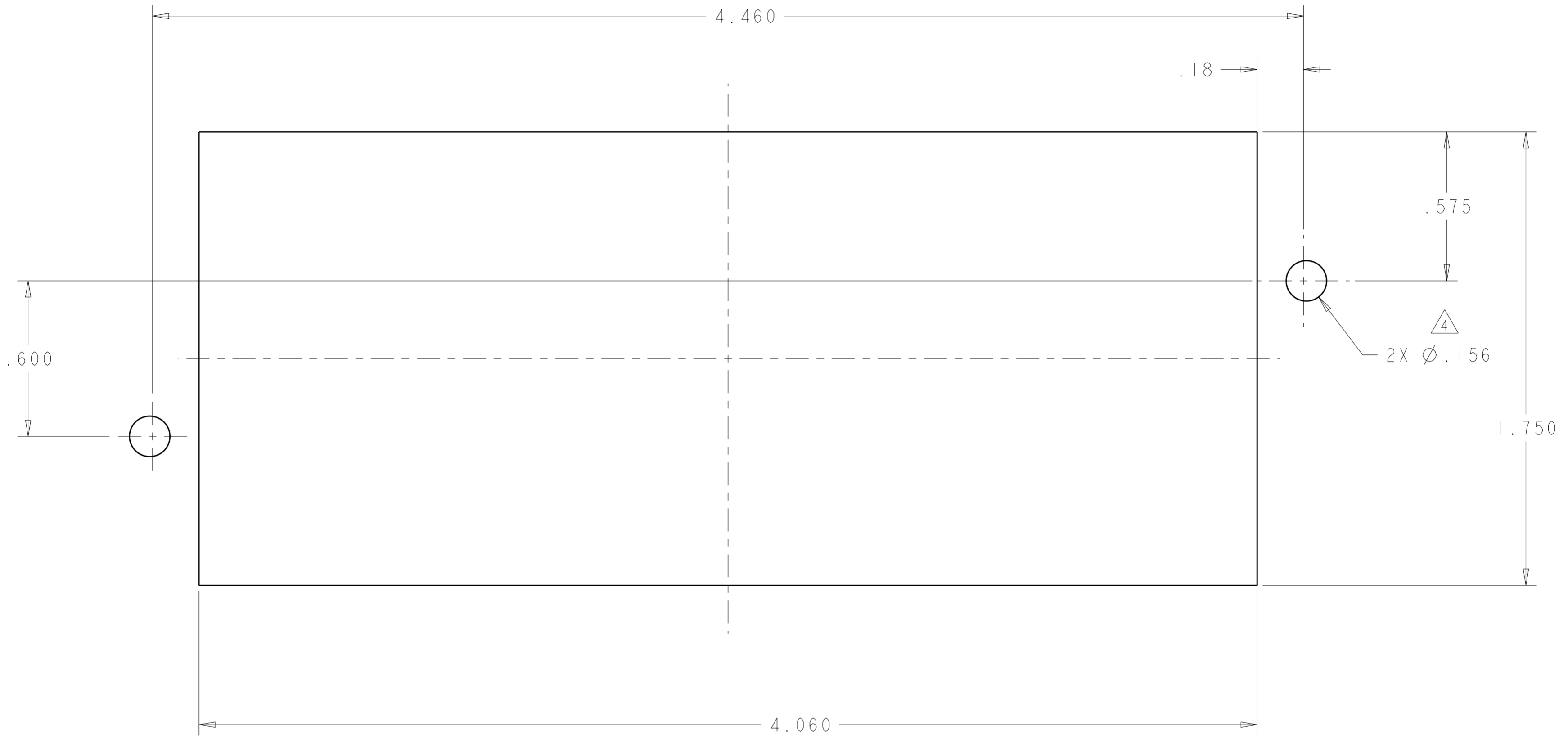
2

1

THIS DRAWING IS UNPUBLISHED. RELEASED FOR PUBLICATION 20
 © COPYRIGHT 20 BY - ALL RIGHTS RESERVED.

LOC DIST
 GP 00

| REVISIONS | | | | DATE | DWN | APVD |
|-----------|-----|-------------|---|------|-----|------|
| P | LTR | DESCRIPTION | | | | |
| - | | SEE SHEET 1 | - | - | - | |
| | | | | | | |
| | | | | | | |



PIN PANEL MOUNT CUTOUT
 COMPONENT SIDE

| | | | | |
|--|--|----------------------------------|---|--|
| THIS DRAWING IS A CONTROLLED DOCUMENT. | | DWN C. VALENTINE 31OCT2012 | STE TE Connectivity | |
| DIMENSIONS: INCHES | | CHK D. ORRIS 31OCT2012 | | |
| TOLERANCES UNLESS OTHERWISE SPECIFIED: | | APVD D. ORRIS 31OCT2012 | NAME PIN CONNECTOR ASSEMBLY DOMINO W/PANEL CUT-OUT | |
| 0 PLC ±- | | PRODUCT SPEC | SIZE CAGE CODE DRAWING NO RESTRICTED TO | |
| 1 PLC ±- | | APPLICATION SPEC | A200779 C-2212102 - | |
| 2 PLC ±.25 | | WEIGHT | SCALE SHEET OF REV | |
| 3 PLC ±.010 | | CUSTOMER DRAWING | 2:1 2 OF 2 A | |
| 4 PLC ±- | | | | |
| ANGLES ±- | | | | |
| FINISH | | | | |