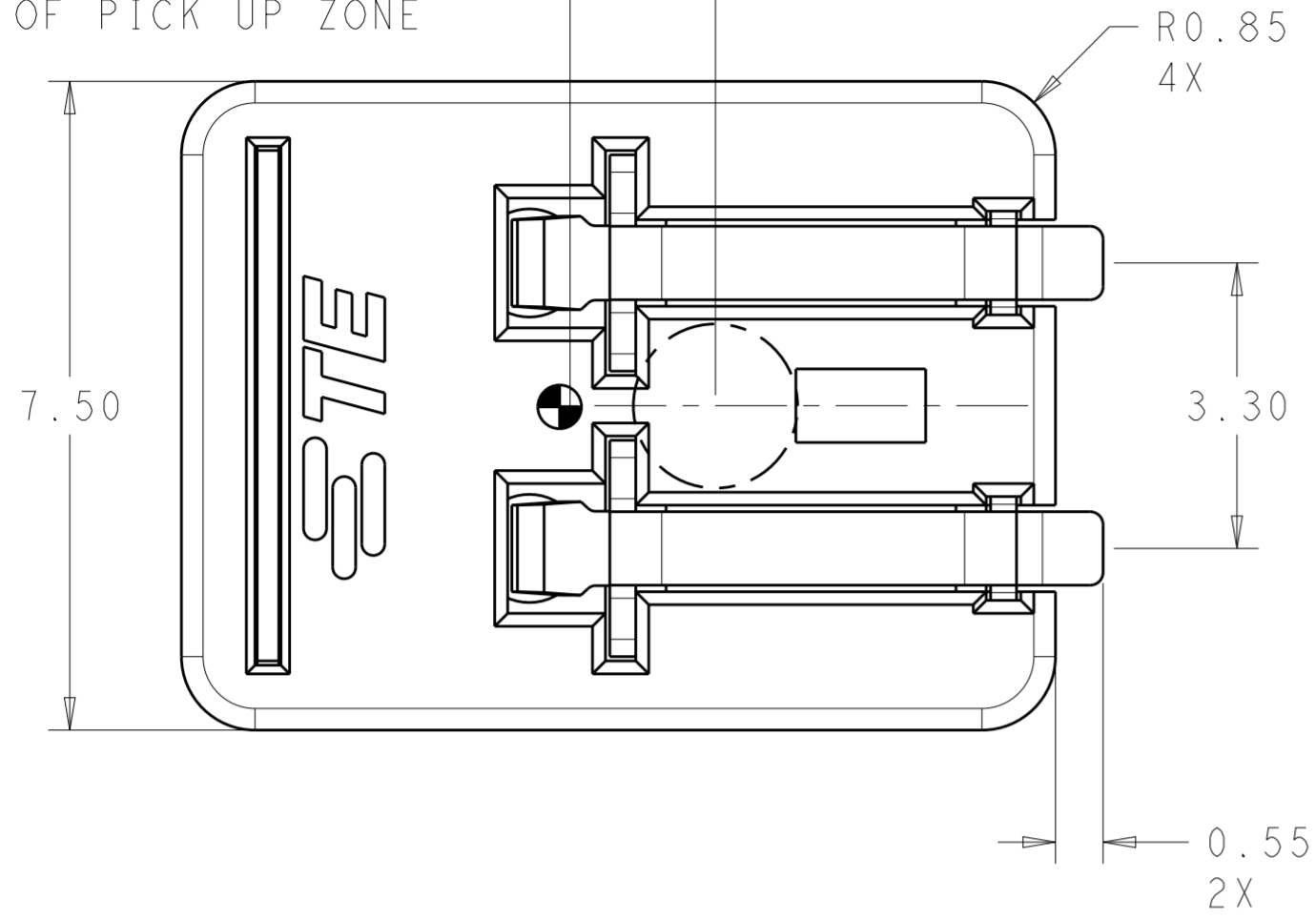


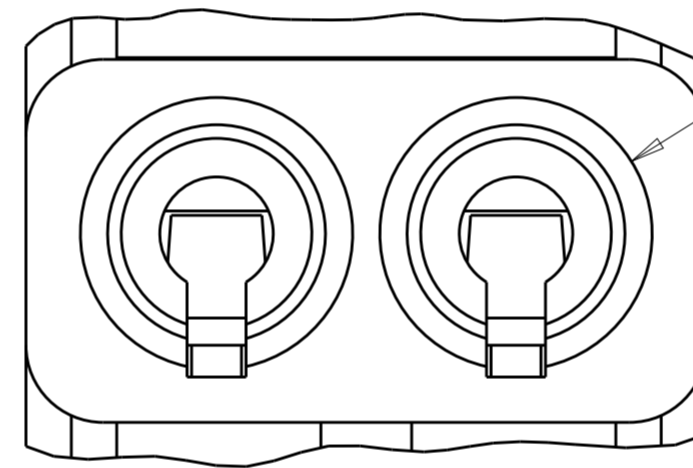
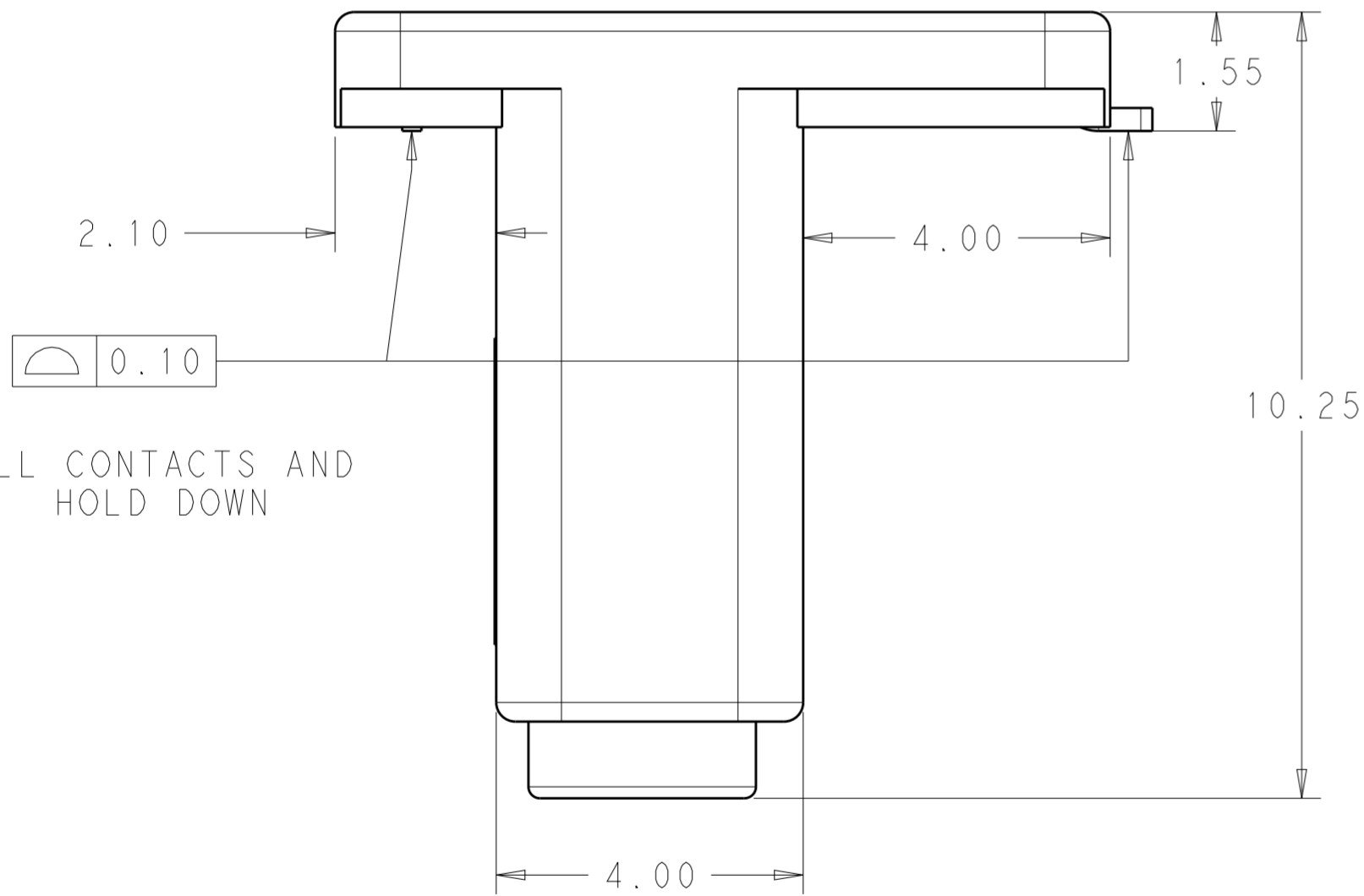
THIS DRAWING IS UNPUBLISHED. RELEASED FOR PUBLICATION 20
 © COPYRIGHT 20 BY - ALL RIGHTS RESERVED.

LOC		DIST		REVISIONS			
P	LTR	DESCRIPTION	DATE	DWN	APVD		
	A	REVISED PER ECR-16-004597	12APR2016	RS	DD		

1.68 DISTANCE FROM COG TO CENTER OF PICK UP ZONE

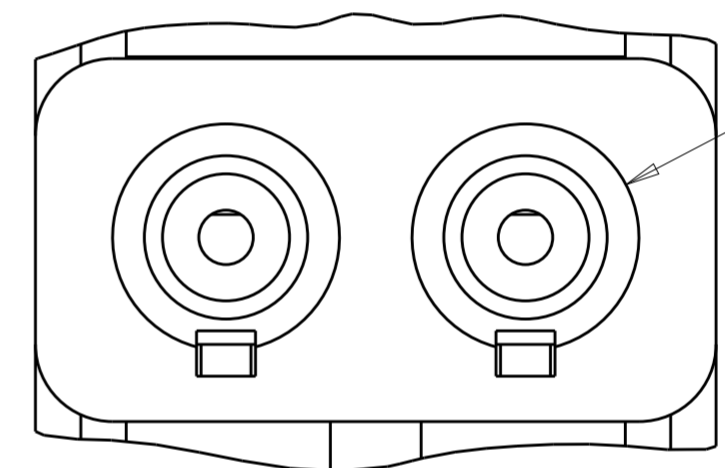


- 1 MATERIALS AND FINISH:
 -HOUSING AND COVER: THERMOPLASTIC, COLOR: NATURAL
 -CONTACTS: COPPER ALLOY, FINISH: Sn OVER Ni
 -HOLD DOWN: COPPER ALLOY, FINISH: Sn OVER Ni
- 2. MUST COMPLY WITH DIRECTIVE 2002/95/EC (ROHS)
- 3. NOTE DELETED.
- 4 TO BE USED WITH UL1007 WIRE 22-18AWG SOLID, 20-18 AWG BONDED, 18 AWG STRANDED.
- 5. PACKAGED IN TAPE AND REEL
- 6 TO BE USED WITH UL1007 WIRE 26-24 AWG SOLID.
- 7 DIMENSION SHOWN IS RECOMMENDED SOLDER MASK OPENING



2213189-1, -3

VIEW E (ROTATED 90° CW)



2213189-2, -4

2213189-1, -2

MARKING	DIM X	DESCRIPTION	WIRE RANGE	PART NO.
26-24	Ø 2.50	WITH COVER	6	2213189-4
22-18	Ø 3.00	WITH COVER	4	2213189-3
26-24	Ø 2.50	W/O COVER	6	2213189-2
22-18	Ø 3.00	W/O COVER	4	2213189-1

SEE VIEW E

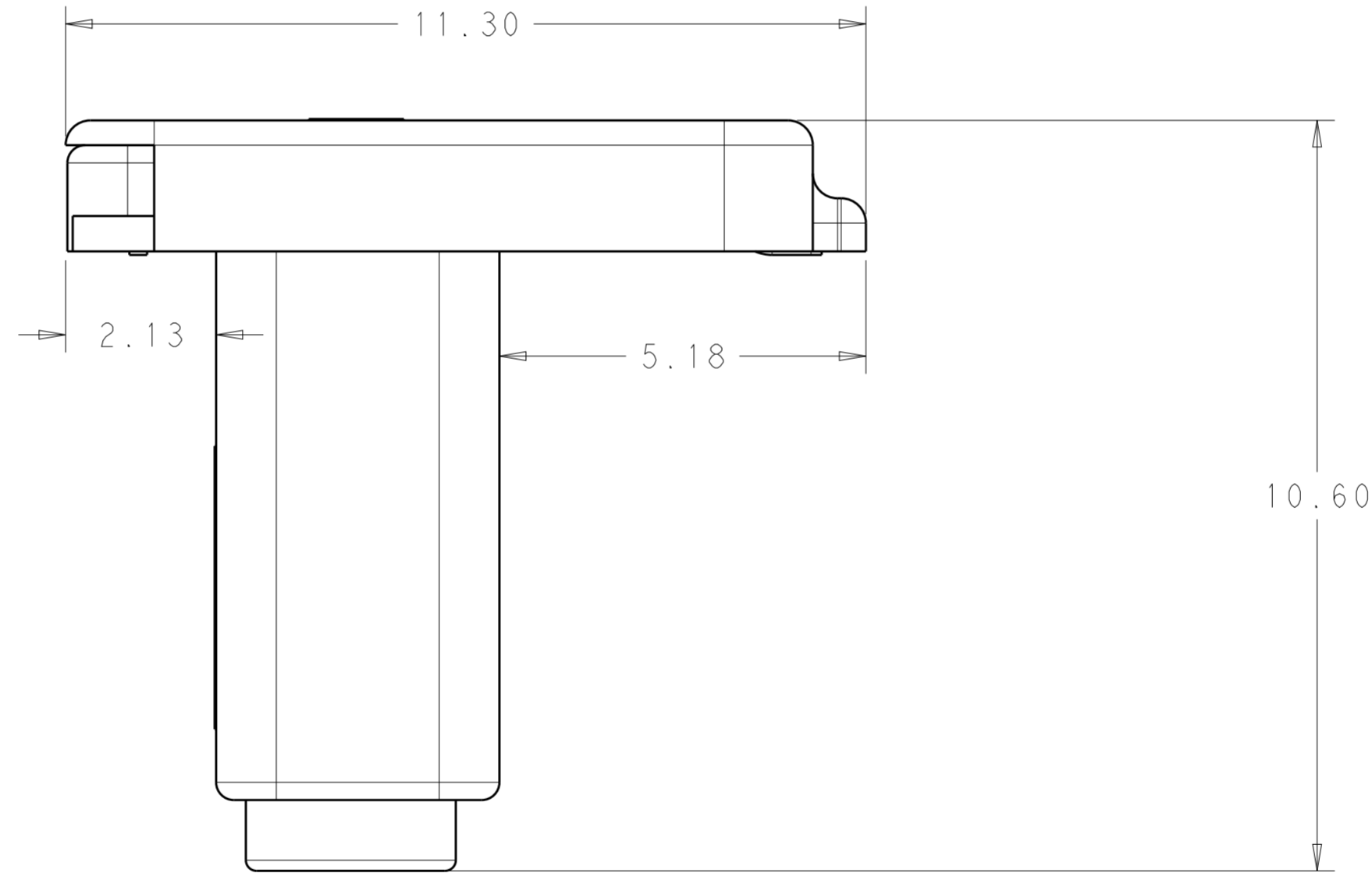
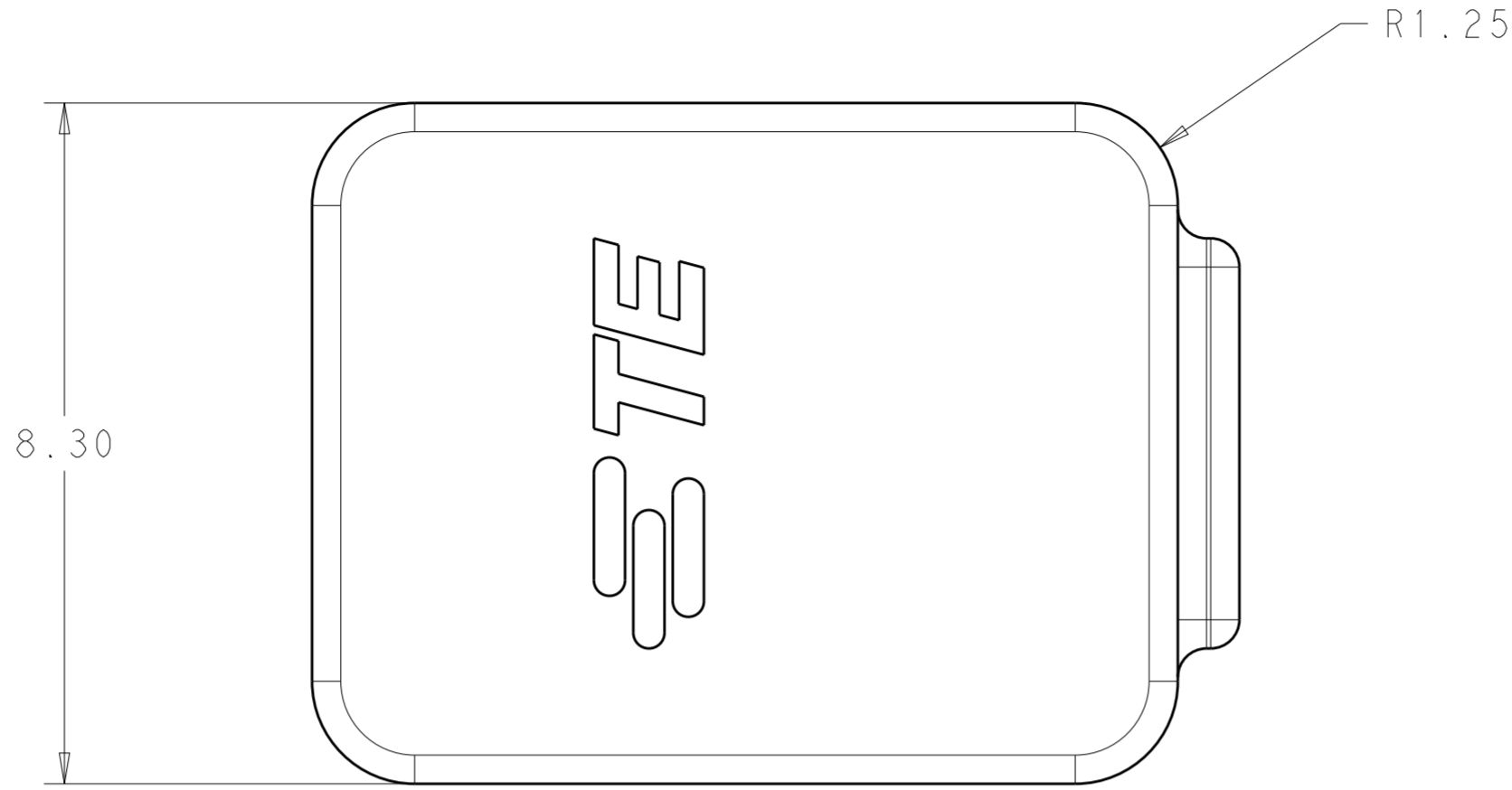
THIS DRAWING IS A CONTROLLED DOCUMENT.

DWN C. DAILY 25OCT2012	CHK C. GINGRICH 25OCT2012	APVD		NAME	
DIMENSIONS: mm		TOLERANCES UNLESS OTHERWISE SPECIFIED:		STE TE Connectivity	
0 PLC ±		1 PLC ±0.2		ASSEMBLY, POKE-IN INVERTED THROUGH BOARD	
2 PLC ±0.15		3 PLC ±		-	
4 PLC ±		ANGLES ±2A°		SIZE CAGE CODE DRAWING NO RESTRICTED TO	
FINISH		MATERIAL		A200779 C-2213189	
-		-		SCALE 6:1 SHEET 1 OF 4 REV A	

CUSTOMER DRAWING

THIS DRAWING IS UNPUBLISHED. RELEASED FOR PUBLICATION 20
 © COPYRIGHT 20 BY - ALL RIGHTS RESERVED.

LOC		DIST		REVISIONS			
P	LTR	DESCRIPTION	DATE	DWN	APVD		
-	-	SEE SHEET 1	-	-	-		

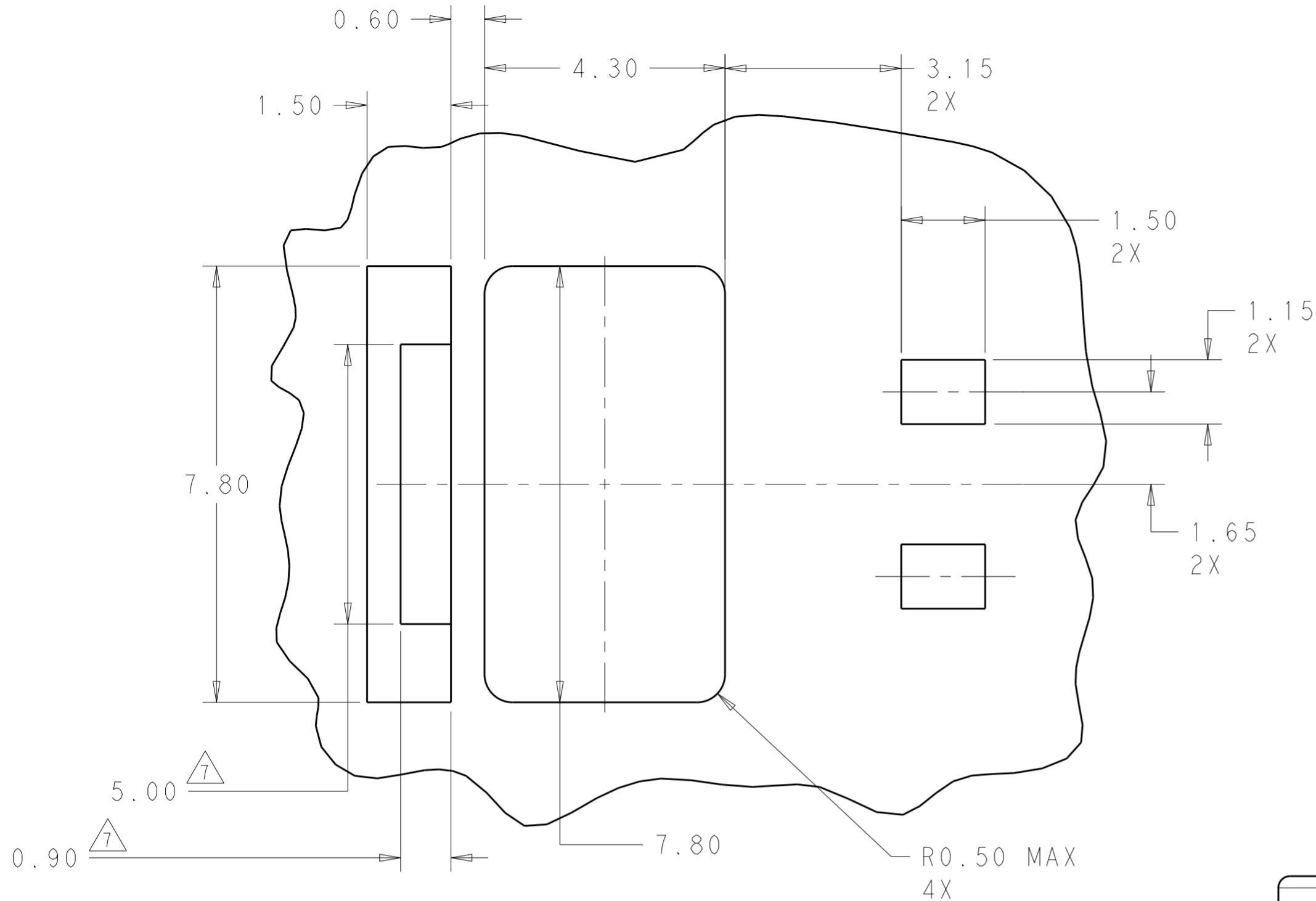


2213189-3, -4

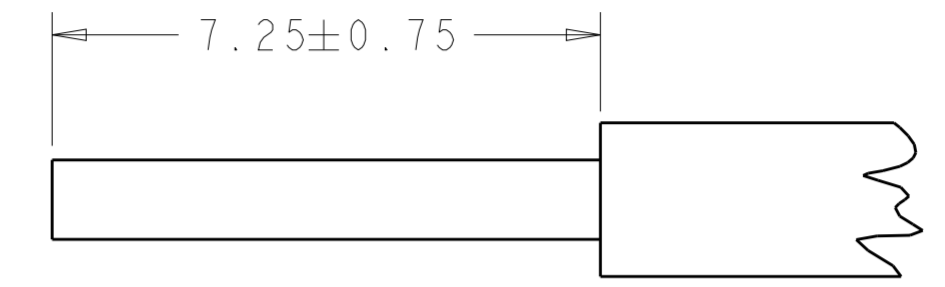
THIS DRAWING IS A CONTROLLED DOCUMENT.		DWN C. DAILY 25OCT2012	STC TE Connectivity	
		CHK C. GINGRICH 25OCT2012		
DIMENSIONS: mm		TOLERANCES UNLESS OTHERWISE SPECIFIED:		NAME ASSEMBLY, POKE-IN INVERTED THROUGH BOARD
0 PLC ±		1 PLC ±0.2		PRODUCT SPEC 108-32040
2 PLC ±0.15		3 PLC ±		APPLICATION SPEC 114-32054
4 PLC ±		ANGLES ±2A°		SIZE A200779
FINISH		MATERIAL		CAGE CODE C-2213189
		Customer Drawing		RESTRICTED TO -
		SCALE 6:1		SHEET 2 OF 4
				REV A

THIS DRAWING IS UNPUBLISHED. RELEASED FOR PUBLICATION 20
 © COPYRIGHT 20 BY - ALL RIGHTS RESERVED.

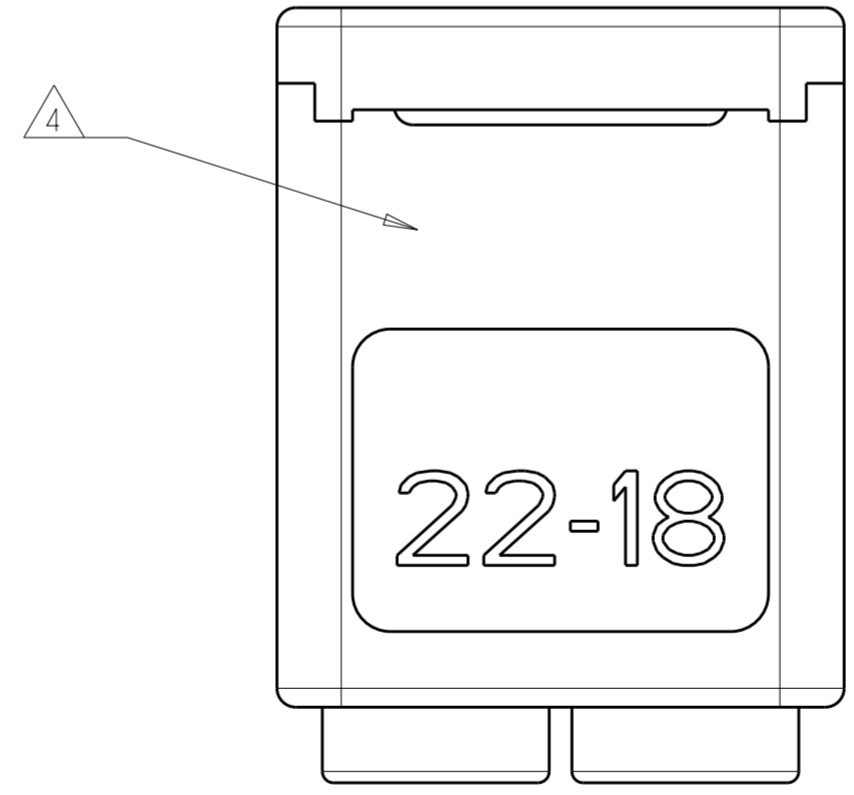
LOC	DIST	REVISIONS			
P	LTR	DESCRIPTION	DATE	DWN	APVD
-	-	SEE SHEET 1	-	-	-



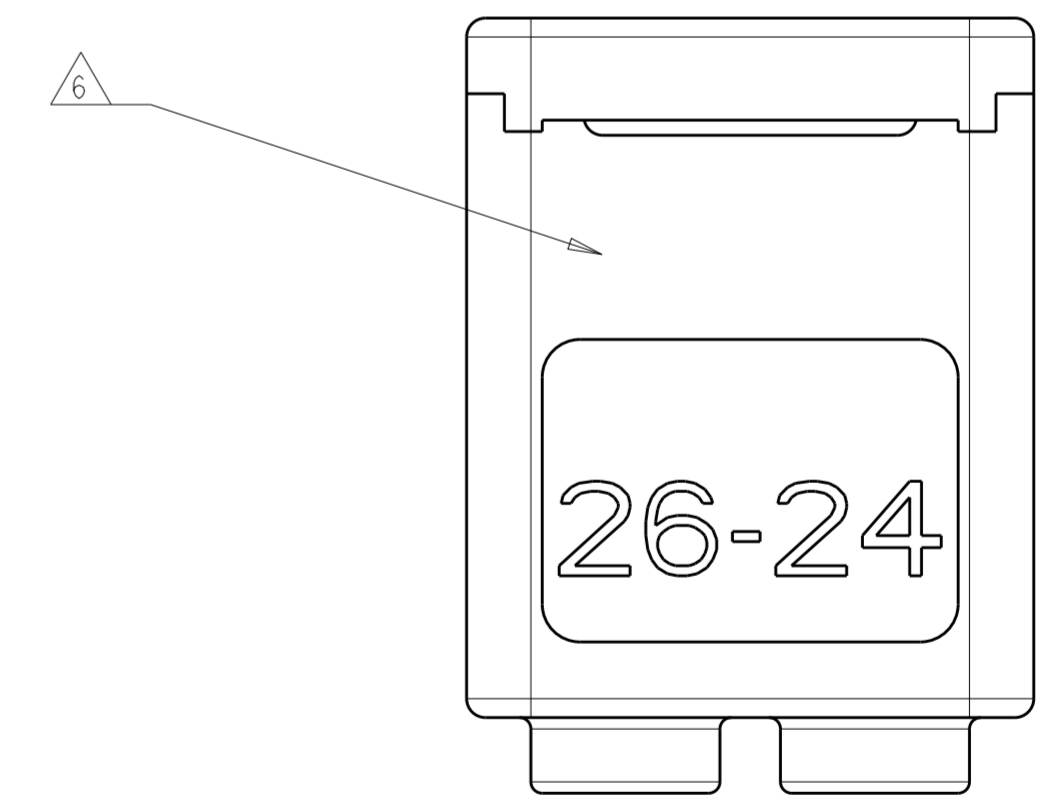
MOUNTING PCB LAYOUT
 SCALE 12:1



WIRE PREPARATION DETAIL
 SCALE 10:1



2213189-1, -3
 SCALE 10:1



2213189-2, -4
 SCALE 10:1

THIS DRAWING IS A CONTROLLED DOCUMENT.		DWN C. DAILY 25OCT2012	STE TE Connectivity	
		CHK C. GINGRICH 25OCT2012		
DIMENSIONS:	TOLERANCES UNLESS OTHERWISE SPECIFIED:	APVD -	NAME ASSEMBLY, POKE-IN INVERTED THROUGH BOARD	
mm	0 PLC ± 1 PLC ±0.2 2 PLC ±0.15 3 PLC ± 4 PLC ± ANGLES ±2A° FINISH -	PRODUCT SPEC 108-32040	RESTRICTED TO -	
MATERIAL -		APPLICATION SPEC 114-32054	SIZE A2	CAGE CODE 00779
		WEIGHT -	DRAWING NO C-2213189	REV A
		Customer Drawing	SCALE 2:1	SHEET 3 OF 4