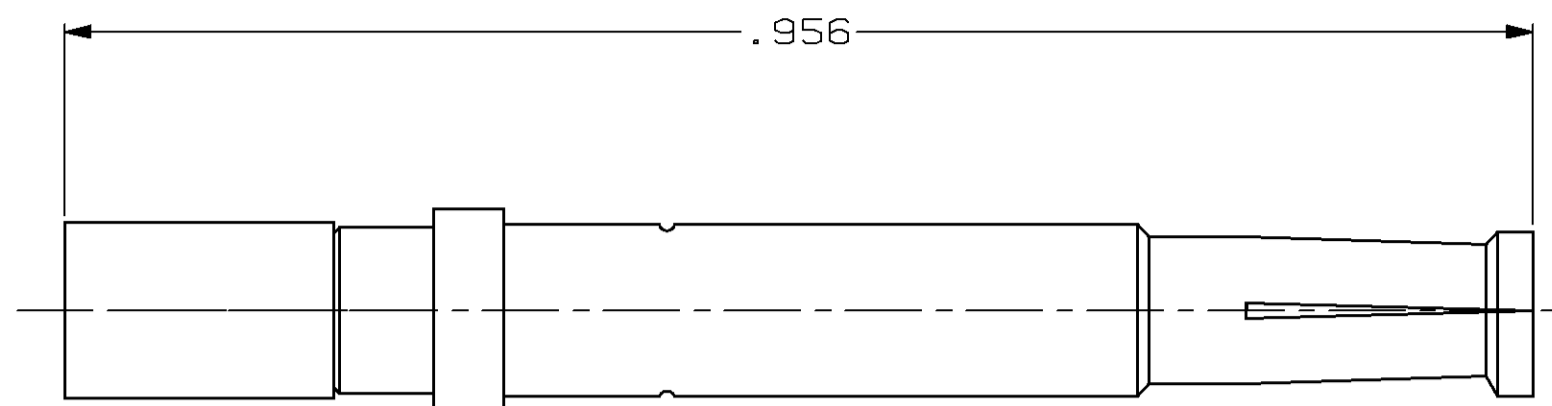
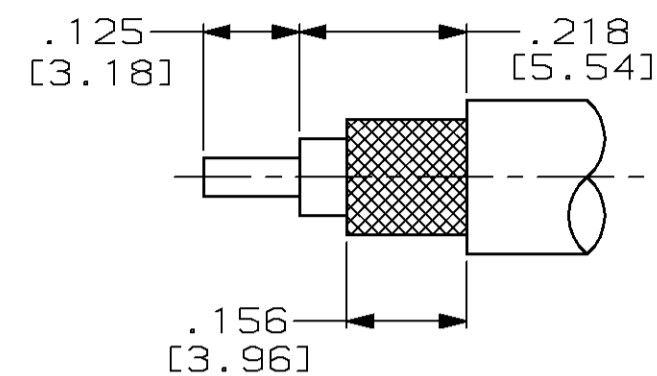


THIS DRAWING IS UNPUBLISHED. RELEASED FOR PUBLICATION
 © COPYRIGHT 19 BY AMP INCORPORATED. ALL RIGHTS RESERVED.

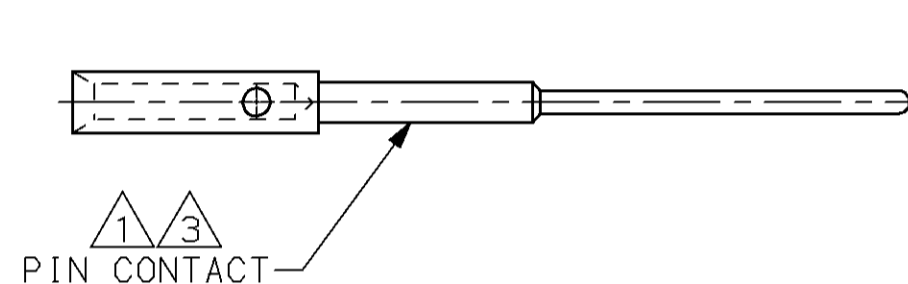
LOC		DIST		REVISIONS			
P	LTR	DESCRIPTION	DATE	DWN	APVD		
DF	AO	B	REV & REDRAWN; 0600-5680-96	3-97	CT	JW	



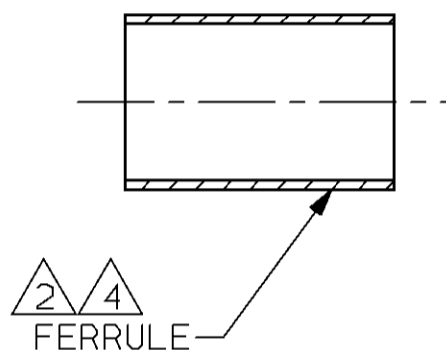
ASSEMBLED VIEW



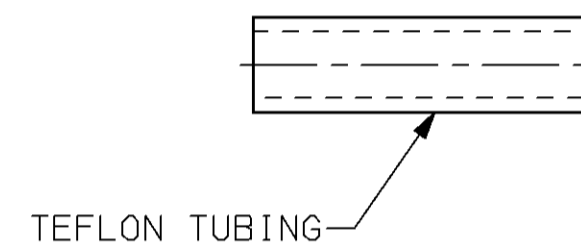
RECOMMENDED STRIP LENGTH
SCALE: NTS



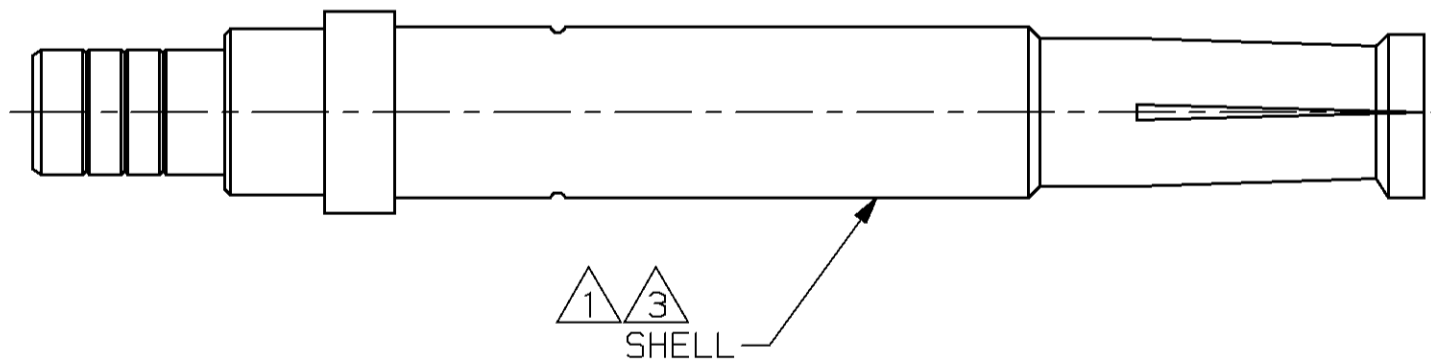
PIN CONTACT



FERRULE



TEFLON TUBING



SHELL

- 1 MAT'L: BERYLLIUM COPPER PER ASTM-B-196
- 2 MAT'L: COPPER PER ASTM-B-152
- 3 FINISH: GOLD PER MIL-G-45204 OVER NICKEL PER QQ-N-290.
- 4 FINISH: TIN-LEAD PLATE
- 5. FOR USE WITH RG-178/U AND 196/U CABLE.
- 6. FOR ASSEMBLY AND CRIMPING INSTRUCTIONS SEE I.S. 2348-4.

226781-3
PART NO.

THIS DRAWING IS A CONTROLLED DOCUMENT.		DWN C.C. THOMAS 3-4-97	AMP Incorporated Harrisburg, PA 17105-3608	
DIMENSIONS: INCHES [mm]		CHK J. WEAVER 3-4-97	NAME CONNECTION, COAXIAL, RF ARINC, SIZE 15, SOCKET	
TOLERANCES UNLESS OTHERWISE SPECIFIED:		APVD J. WEAVER 3-4-97	RESTRICTED TO	
0 PLC ±-		PRODUCT SPEC	SIZE A2	
1 PLC ±-		APPLICATION SPEC	CAGE CODE 00779	
2 PLC ±-			DRAWING NO C-226781-3	
3 PLC ±.015 [0.38]			SCALE 8:1	
4 PLC ±-			SHEET 1 OF 1	
ANGLES ±-			REV B	
FINISH -		WEIGHT -	CUSTOMER DRAWING	

226781-3