

This document, including the design, configuration and mechanical features revealed herein are the sole, confidential and proprietary property of Winchester Interconnect. Reproduction or use thereof, in whole or part, is prohibited without the prior written consent of Winchester Interconnect.

REV	DESCRIPTION	DATE	APRD
A	ECO-12205	3/17/20	ASNZ

MATERIALS:

- STAINLESS STEEL 303 PER ASTM A582
- BERYLLIUM COPPER UNS C17300 PER ASTM B196
- REXOLITE

FINISH:

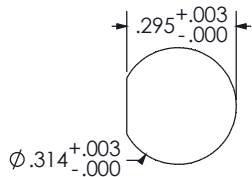
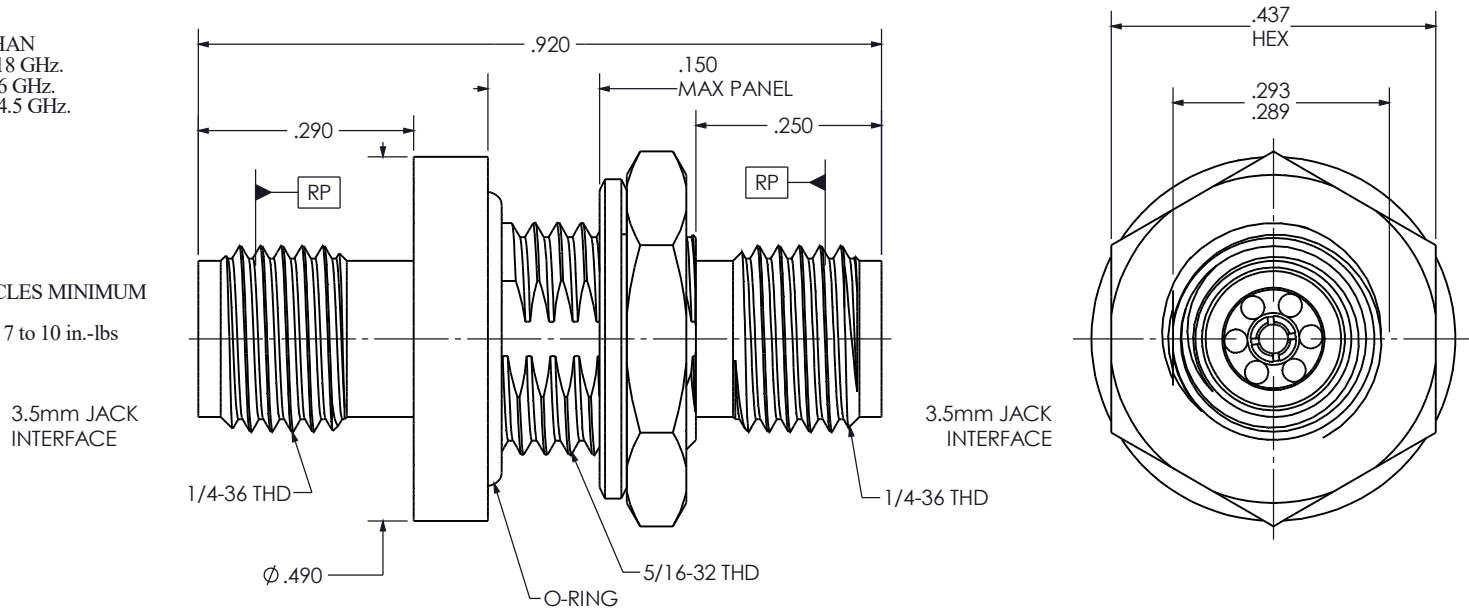
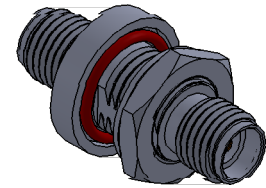
- CENTER CONDUCTORS SHALL BE PLATED GOLD PER MIL-DTL-45204D OVER NICKEL AMS-QQ-N-290.
- BODY AND BODY COMPONENTS SHALL BE PASSIVATED PER AMS 2700.

PERFORMANCE:


- FREQUENCY: DC-34.5GHz
- VSWR: 1.25 TO 34.5GHz
- INSERTION LOSS: NOT GREATER THAN
 - 0.20 dB @ DC-18 GHz.
 - 0.25 dB @ 18-26 GHz.
 - 0.30 dB @ 26-34.5 GHz.
- OPERATING TEMP: -60 °C TO 100 °C
- IMPEDANCE: 50Ohms Nom.

MECHANICAL:

- CONNECTOR DURABILITY: 500 CYCLES MINIMUM
- RECOMMENDED MATING TORQUE: 7 to 10 in.-lbs



RECOMMENDED PANEL CUTOUT

DO NOT SCALE DRAWING	DRAWN LMW	DATE 05/03	 Winchester Interconnect. <small>245 Lynnfield St. Peabody, MA 01960</small>
UNLESS OTHERWISE SPECIFIED: DIMENSIONS ARE IN INCHES	ENG APPR.	DATE	
TOLERANCES: FRACTIONS: ±1/64 .X : ±.030 .XX : ±.010 .XXX : ±.005 ANGLES: X° : ±1° X'X' : ±15' MACHINED SURFACES: 63/	MFG APPR.	DATE	
	OTHER APPR.	DATE	
THIRD ANGLE PROJECTION			TITLE: 3.5 mm JACK TO 3.5 mm JACK BULKHEAD
SIZE B		DWG. NO. 23-923-2000-30	REV A
PER ASME Y14.5M-1994		SCALE: 3:1	SHEET 1 OF 1