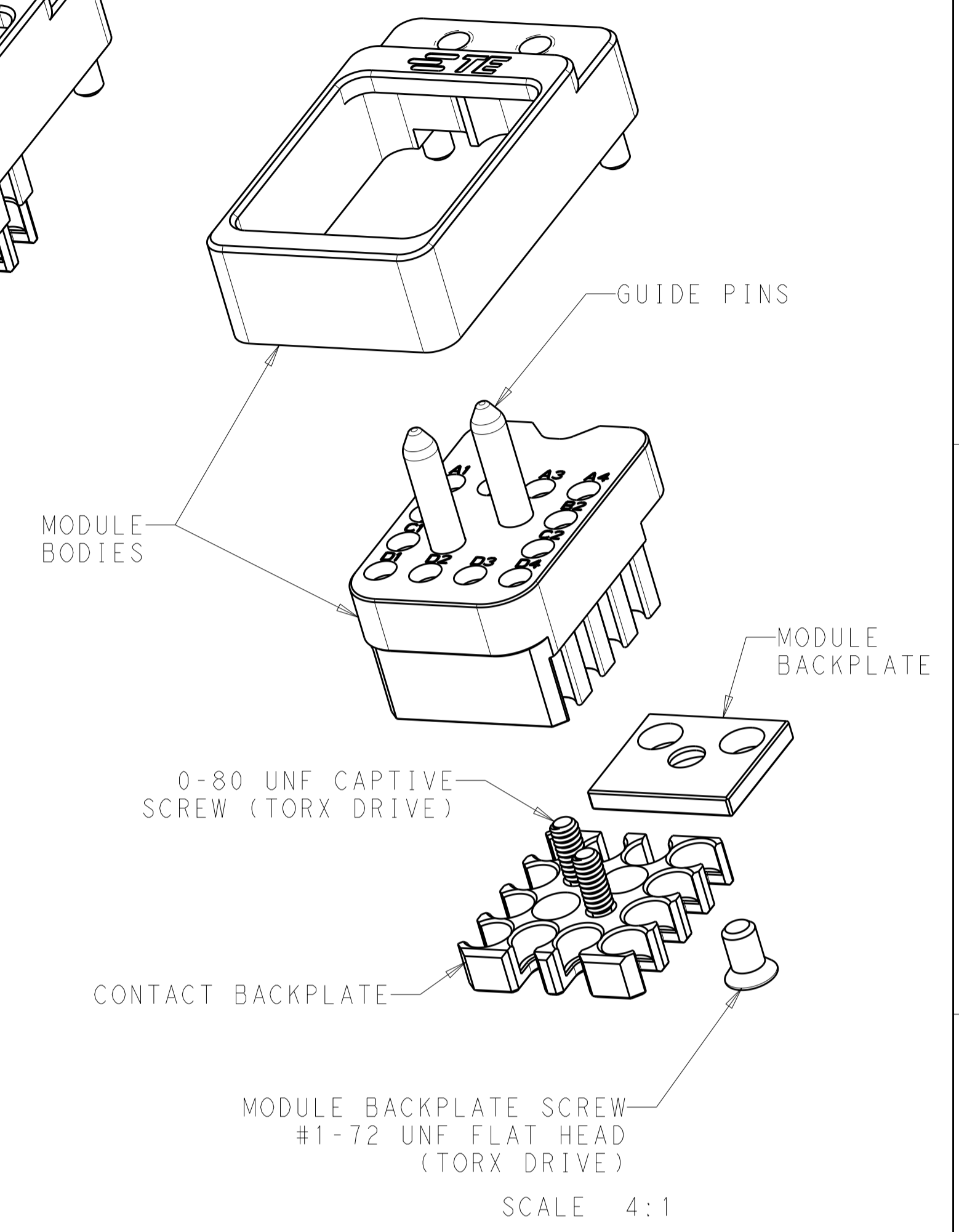
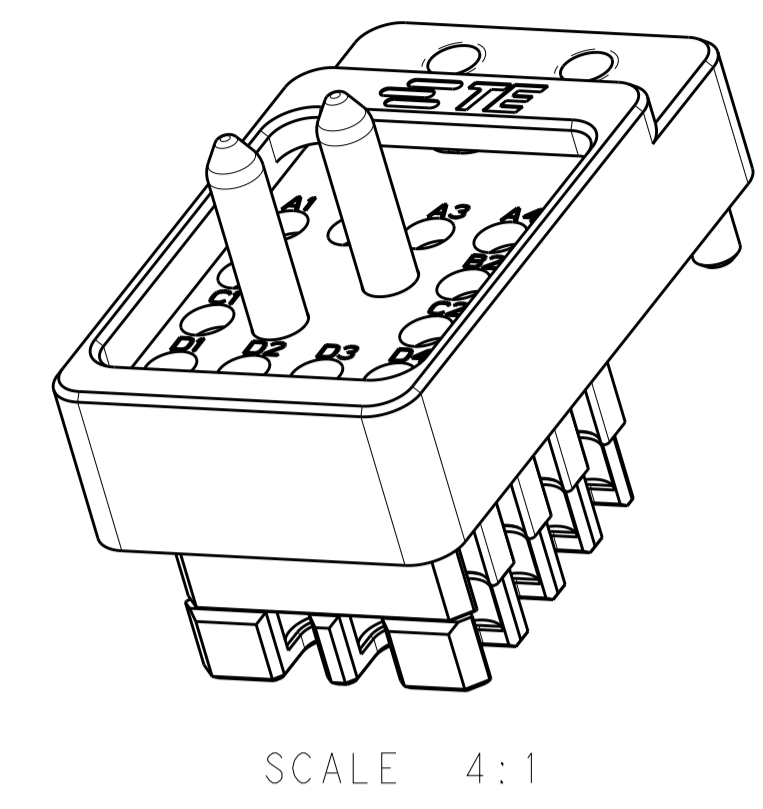
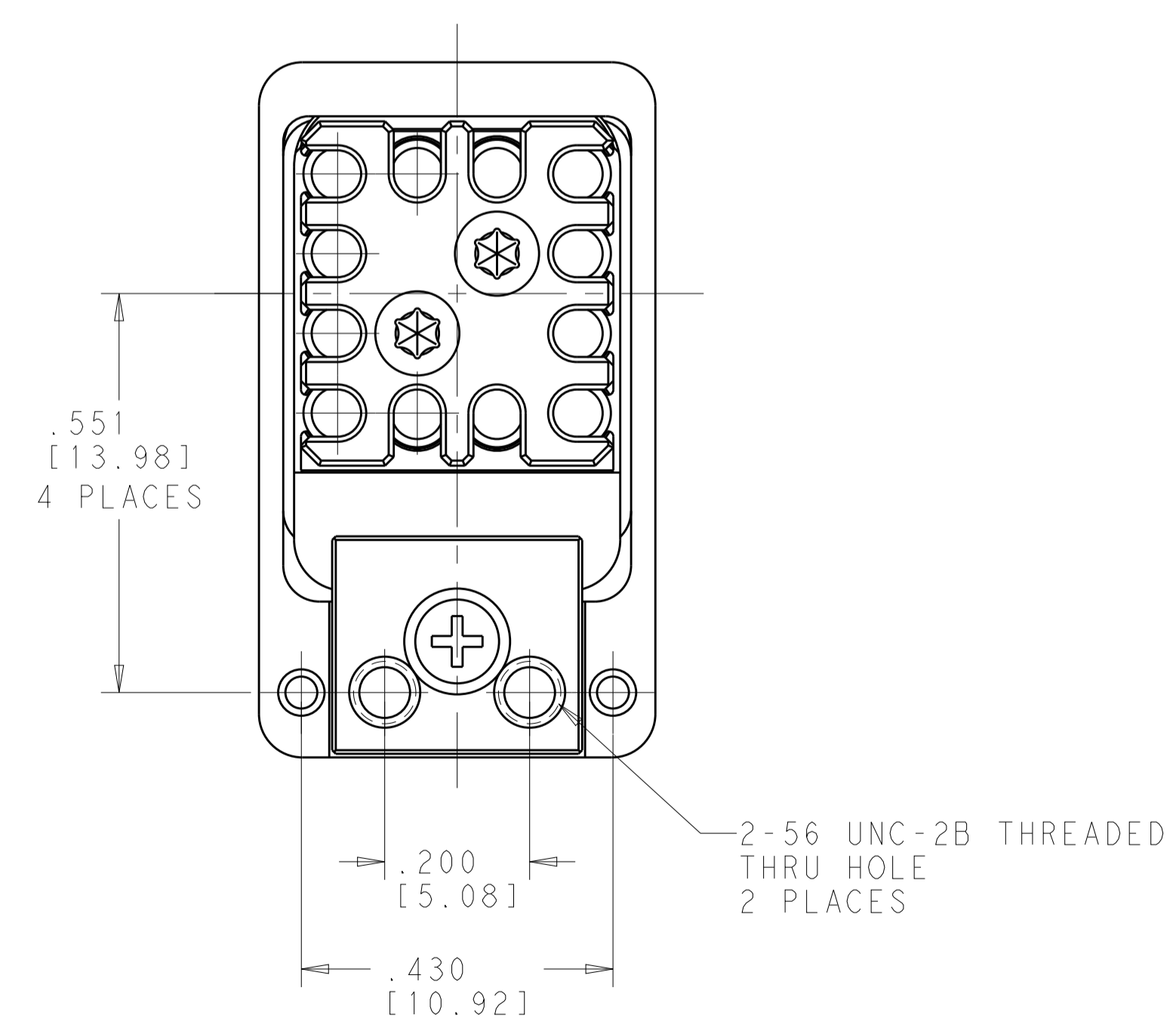
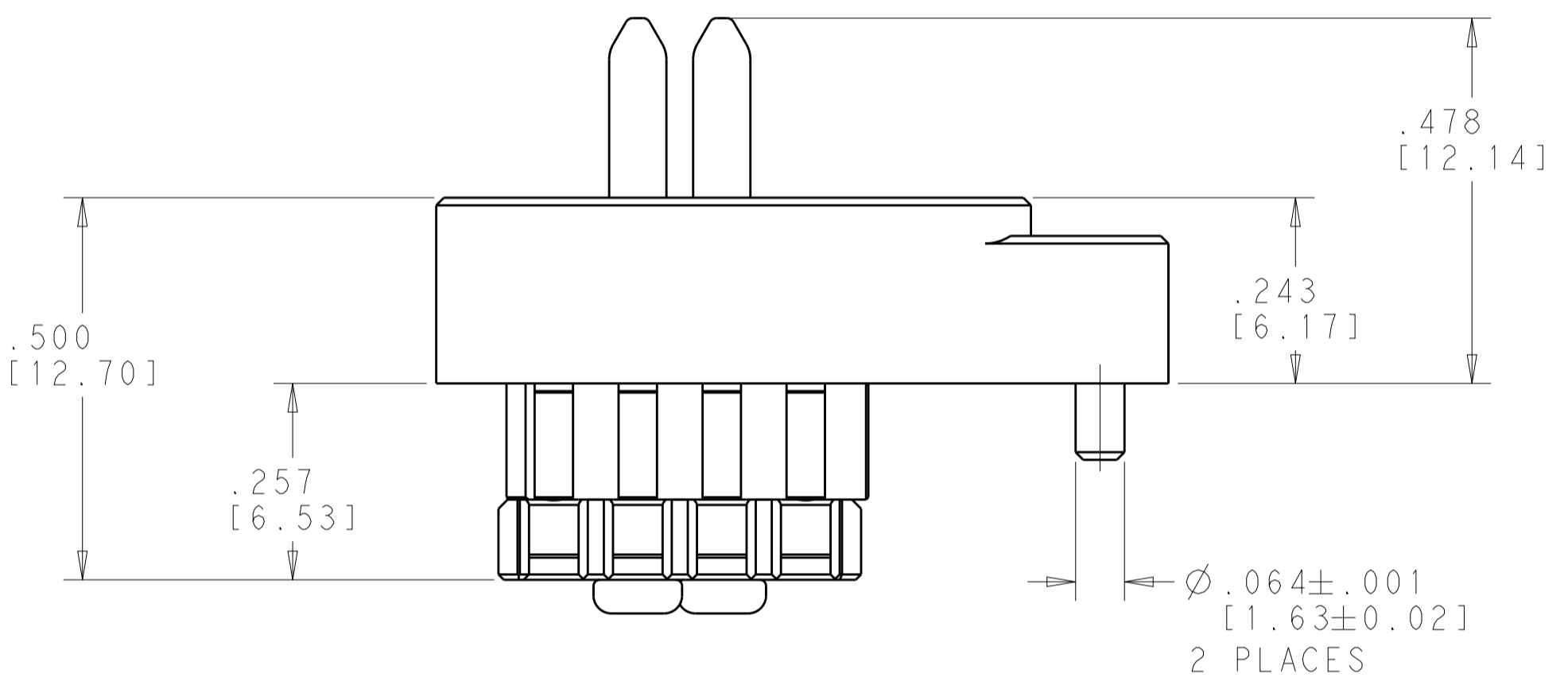
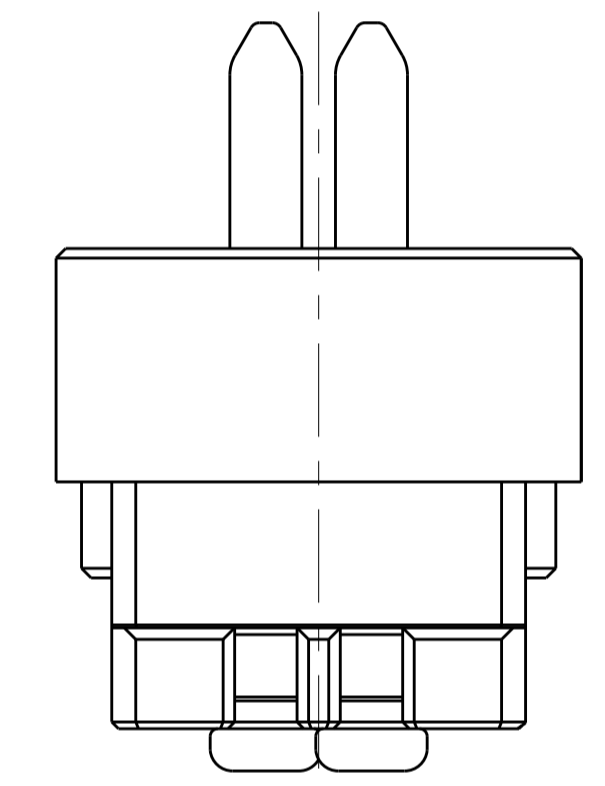
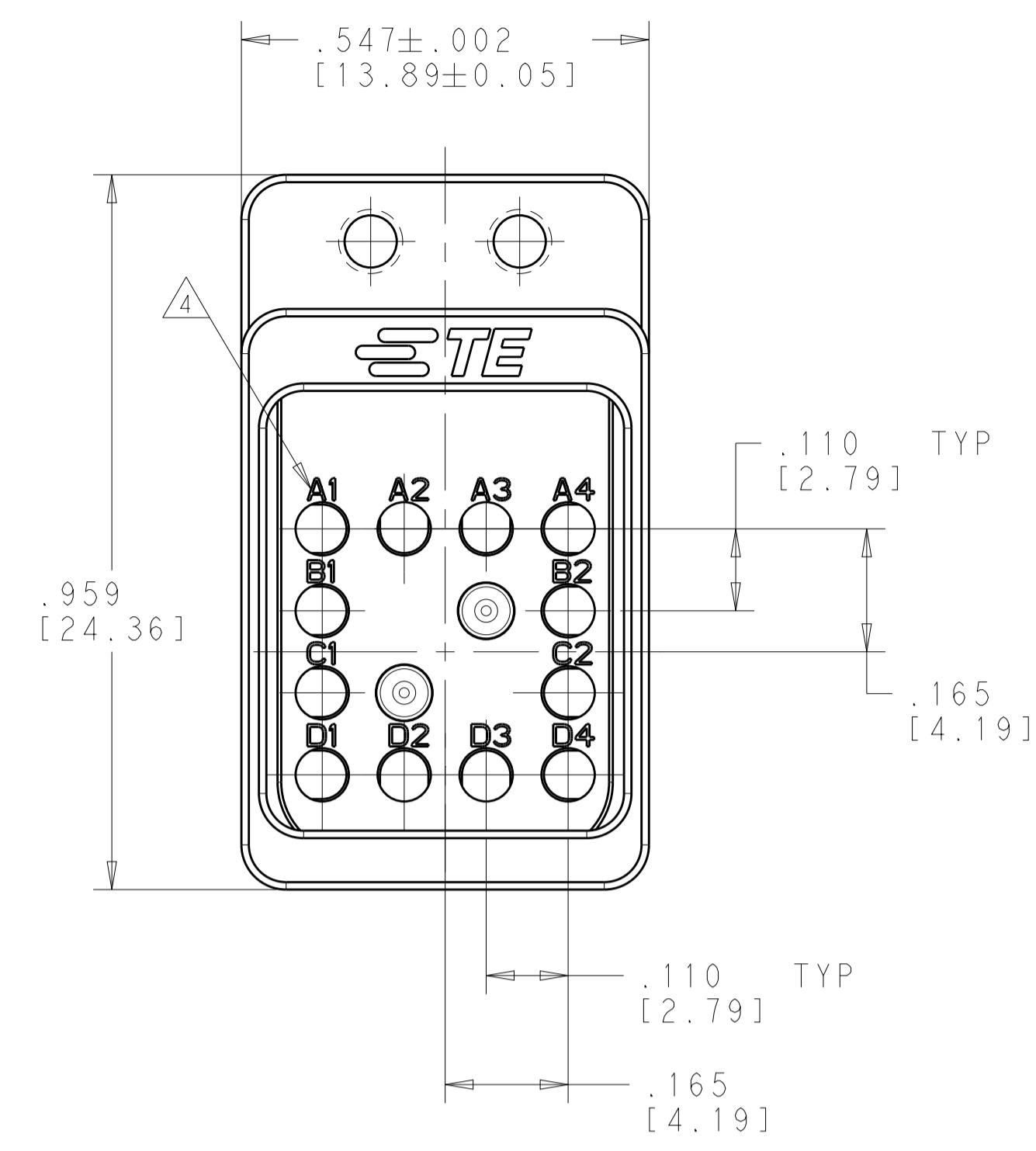


REVISIONS				
P.	LTN.	DESCRIPTION	DATE	OWN. / APVD.
A		RELEASED PER ECO 18-016587	10-23-18	CT / FB

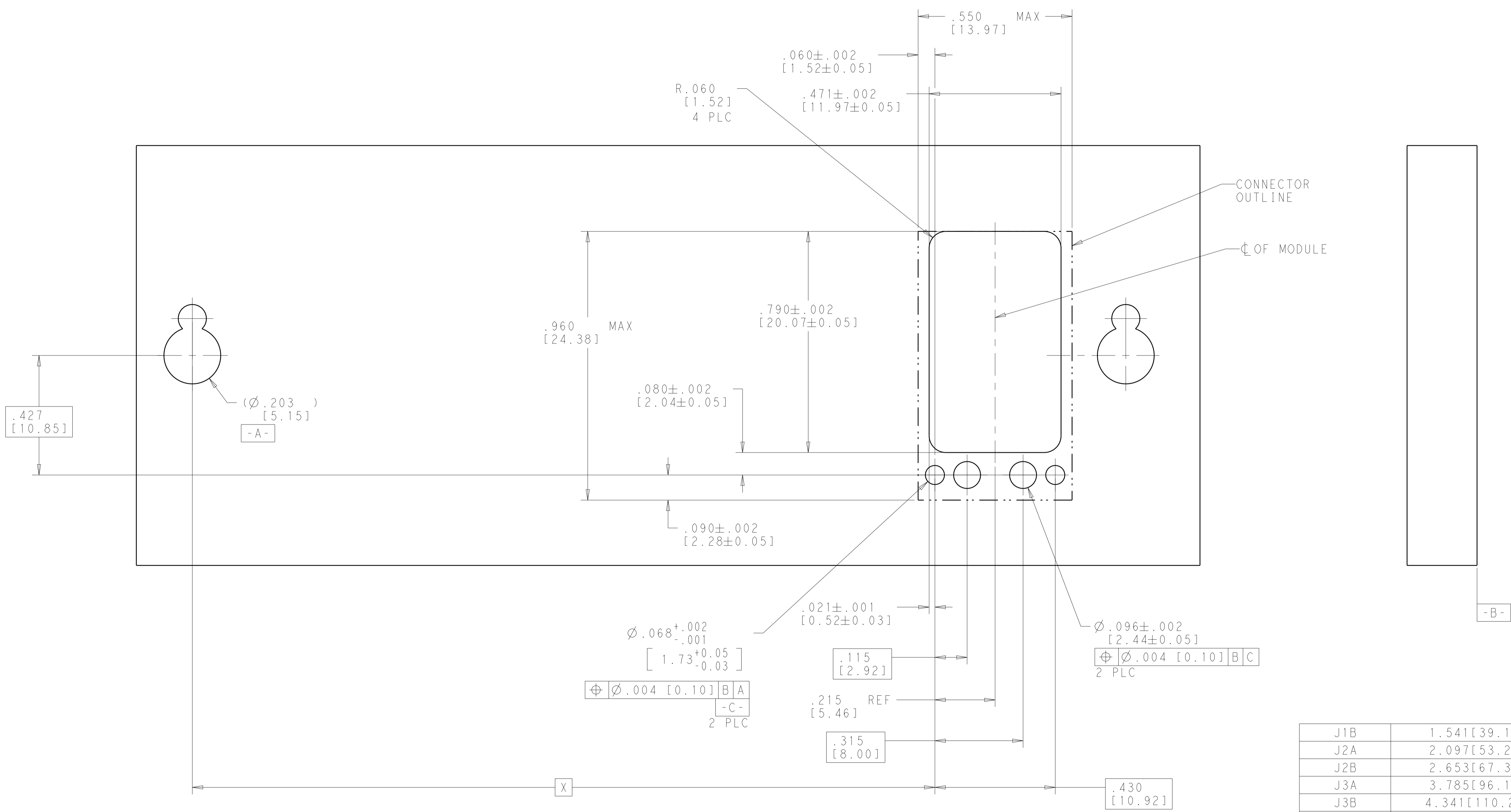


- 1 MATERIAL:  
 MODULE BODIES AND BACKPLATES - SEE TABLE  
 GUIDE PIN - STAINLESS STEEL, PER UNS S30300  
 SCREWS - 300 SERIES STAINLESS STEEL
- 2 FINISH:  
 MODULE BODIES - SEE TABLE  
 SCREWS AND GUIDE PIN - PASSIVATED
- 3. SHIPPED IN KIT FORM. CONTACT BACKPLATE SCREWS TO BE ASSEMBLED TO CONTACT BACKPLATE. MODULE BODIES TO BE ASSEMBLED TOGETHER WITH MODULE BACKPLATE AND MODULE BACKPLATE SCREW.
- 4 CIRCUIT IDENTIFICATION MARKING
- 5. DESIGNED TO BE USED WITH CONTACTS 2302345-1

CLEAR CHROMATE CONVERSION COATING	ALUMINUM ALLOY 7075	2313376-2
PASSIVATED	STAINLESS STEEL PER UNS S30300	2313376-1
MODULE FINISH 2	MODULE MATERIAL 1	PART NUMBER

THIS DRAWING IS A CONTROLLED DOCUMENT.		OWN. K. MILLER 02JAN2018	TE Connectivity
DIMENSIONS: INCHES/mm		CHK. K. DOWHOWER 02JAN2018	
TOLERANCES UNLESS OTHERWISE SPECIFIED:		APVD. K. DOWHOWER 02JAN2018	NAME: 12 POSITION NanoRF MODULE P.C.B. MOUNT - BACKPLANE VITA 67.3 FOOTPRINT COMPATIBLE
0 PLC ±		PRODUCT SPEC 108-163006	
1 PLC ±		APPLICATION SPEC 408-163016	SIZE: CAGE CODE DRAWING NO. A100779 ©=2313376
2 PLC ±		RESTRICTED TO RESTRICTED CUSTOMER	
3 PLC ±.005(0.13)		SCALE 5:1	SHEET 1 OF 2 REV A
4 PLC ±		RESTRICTED TO RESTRICTED CUSTOMER	
ANGLES ±			
FINISH 2			

REVISIONS				
P.	LTN	DESCRIPTION	DATE	APVD
-	-	SEE SHEET 1	-	-



REF PCB LAYOUT - SEE VITA 67.3 FIGURE 6.1.5.2-1

J1B	1.541[39.15]
J2A	2.097[53.27]
J2B	2.653[67.39]
J3A	3.785[96.14]
J3B	4.341[110.26]
J4A	4.919[124.94]
J4B	5.475[139.06]
J5A	6.053[153.74]
J5B	6.609[167.86]
J6A	7.187[182.54]
J6B	7.743[196.66]
POSITION	DIM "X"

THIS DRAWING IS A CONTROLLED DOCUMENT.		DWN: M. MILLER 02JAN2018 CHK: K. DOWHOWER 02JAN2018 APVD: K. DOWHOWER 02JAN2018	TE Connectivity
DIMENSIONS: INCHES/mm	TOLERANCES UNLESS OTHERWISE SPECIFIED: 0 PLC ± 1 PLC ± 2 PLC ± 3 PLC ±.005[0.13] 4 PLC ± ANGLES °	NAME: 12 POSITION NanoRF MODULE PRODUCT SPEC: P.C.B. MOUNT BACKPLANE APPLICATION SPEC: VITA 67.3 FOOTPRINT COMPATIBLE SIZE: 408-163016 WEIGHT: A100779 CUSTOMER DRAWING	