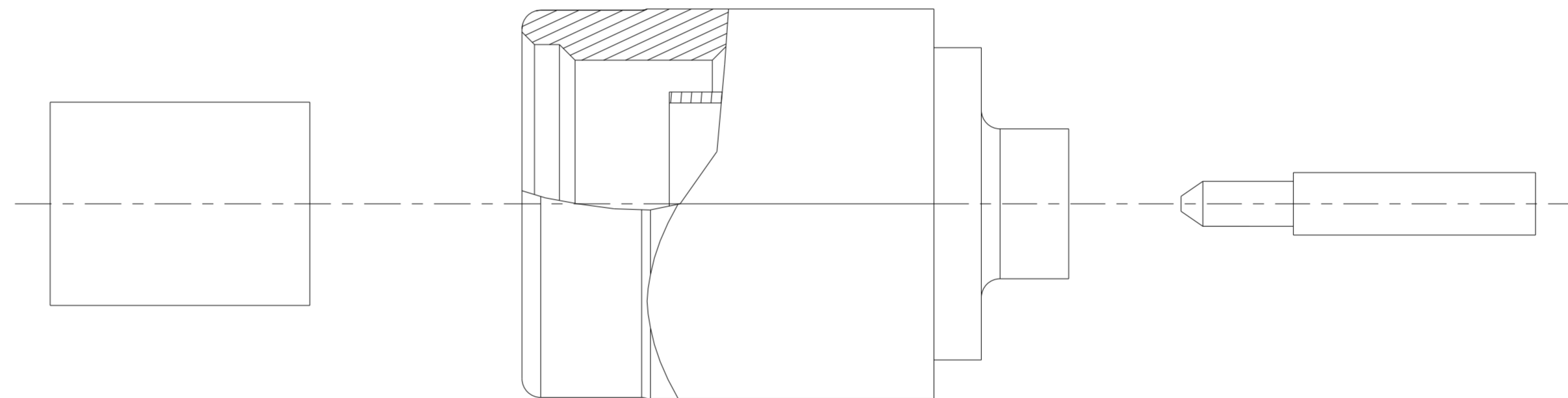


THIS DRAWING IS UNPUBLISHED. RELEASED FOR PUBLICATION 20
 © COPYRIGHT 20 BY - ALL RIGHTS RESERVED.

REVISIONS				
P	LTR	DESCRIPTION	DATE	APVD
A		RELEASED PER ECO 17-010414	7-18-17	CT DW
B		REV PER ECN 21-111319	03AUG2021	LN PD

HOUSING	STAINLESS STEEL PER ASTM A484 AND ASTM A582, TYPE 303	GOLD PLATE PER ASTM B488 OVER NICKEL PLATE PER SAE-AMS-QQ-N-290
COUPLING NUT	STAINLESS STEEL PER ASTM A484 AND ASTM A582, TYPE 303	PASSIVATE PER ASTM A380
DIELECTRIC	PTFE PER ASTM D1457	N/A
CENTER CONTACT	BRASS PER ASTM B16 HALF HARD	GOLD PLATE PER ASTM B488 OVER NICKEL PLATE PER SAE-AMS-QQ-N-290
RETAINING RING	BERYLLIUM COPPER PER ASTM B194, ALLOY C17200, CONDITION H	N/A
GASKET	SILICONE RUBBER PER A-A-59588	N/A
COMPONENT	MATERIAL	FINISH

1. DIELECTRIC AND CONTACT SHIPPED UNASSEMBLED.
2. DESIGNED FOR USE WITH LOW LOSS .086 FLEX CABLE WITH CORE SIMILAR TO MI7/133-RG405 EXCEPT CC APPROX. \varnothing .025 AND DIELECTRIC WITH VP APPROX. 87%.
3. DESIGNED FOR USE WITH LOW LOSS .086 FLEX CABLE EXCEPT CC APPROX. \varnothing .0225 AND DIELECTRIC VP APPROX. 79.5%.



ELECTRICAL	MECHANICAL	ENVIRONMENTAL
NOMINAL IMPEDANCE: 50 OHMS	INTERFACE DIMENSIONS PER MIL-STD-348, FIGURE 310-1	TEMPERATURE RATING: -65°C TO 105°C
FREQUENCY RANGE: DC TO 18 GHz	RECOMMENDED MATING TORQUE: 7-10 IN-LB	VIBRATION: MIL-STD-202, METHOD 204, CONDITION D
VOLT RATING @ SEA LEVEL: 335 VRMS MAX	FORCE TO ENGAGE AND DISENGAGE: 2.0 IN-LB MAX	SHOCK: MIL-STD-202, METHOD 213, CONDITION I
VSWR: 1.07+.008f(GHz)	CABLE RETENTION: AXIAL-30 LB TORQUE-16 IN-OZ	THERMAL SHOCK: MIL-STD-202, METHOD 107, CONDITION B, EXCEPT HIGH TEMP 115°C
INSERTION LOSS: .03SQRT(f[GHz])	WEIGHT - TBD	MOISTURE RESISTANCE: MIL-STD-202, METHOD 106
RF LEAKAGE: -(90-f(GHz)) dB MIN		CORROSION: MIL-STD-202, METHOD 101, CONDITION B, 5% SALT SPRAY
CORONA, 70,000 ft: 250 VRMS MIN		
DWV @ SEA LEVEL: 1000 VRMS MIN		
CONTACT RESISTANCE: OUTER-3.0 Milliohms MAX CENTER-2.0 Milliohms MAX CABLE TO HOUSING-0.5 Milliohms MAX		
RF HIGH POTENTIAL @ SEAL LEVEL: 670 VRMS MIN @ 5 MHz		
I.R.: 5,000 Megohms MIN		

.312 HEX [7.92]

3	2315554-2
2	2315554-1
	PART NUMBER

THIS DRAWING IS A CONTROLLED DOCUMENT.		DWN 18MAY2017	STE TE Connectivity	
DIMENSIONS: in [mm]		CHK 7-18-17		
TOLERANCES UNLESS OTHERWISE SPECIFIED:		APVD 7-18-17	NAME SMA STRAIGHT CABLE PLUG DIRECT SOLDER ATTACHMENT	
0 PLC ±	1 PLC ±	PRODUCT SPEC	SIZE CAGE CODE DRAWING NO RESTRICTED TO	
2 PLC ±	3 PLC ±.005 [0.13]	APPLICATION SPEC	A200779 C-2315554	
4 PLC ±	ANGLES ±	TBD	SCALE 10:1 SHEET 1 OF 1 REV B	
MATERIAL SEE TABLE	FINISH SEE TABLE	WEIGHT TBD	CUSTOMER DRAWING	