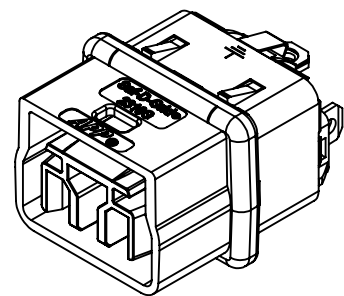


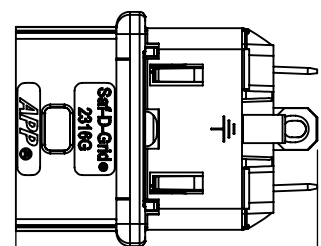
THE INFORMATION CONTAINED IN THIS DRAWING IS THE SOLE PROPERTY OF ANDERSON POWER PRODUCTS. ANY REPRODUCTION IN PART OR WHOLE WITHOUT THE WRITTEN PERMISSION OF ANDERSON POWER PRODUCTS IS PROHIBITED.

Copyright 2017

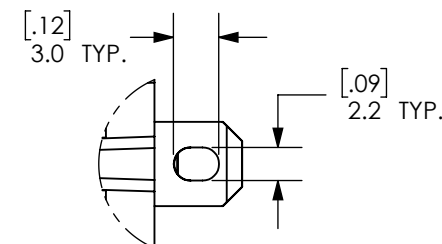
ANDERSON POWER PRODUCTS RESERVES THE RIGHT TO ALTER PRODUCT TYPES, THEIR TECHNICAL DATA, DIMENSION, STYLE AND ACCESSORIES WITHOUT PRIOR NOTIFICATION.



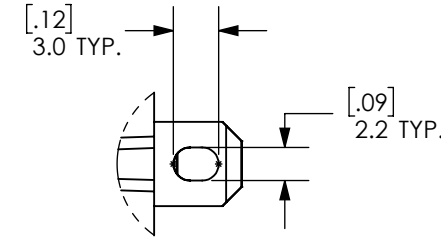
KEY "A" SHOWN



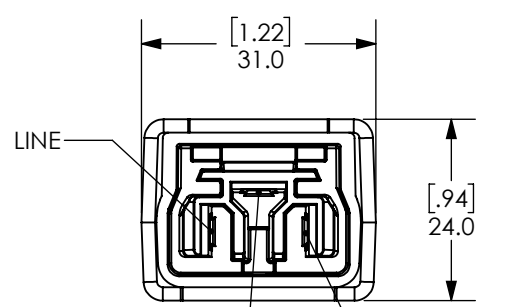
KEY "A" SHOWN



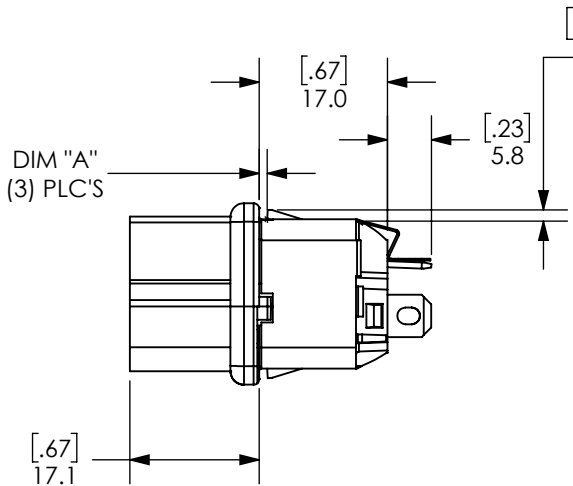
DETAIL A
SCALE 2 : 1
TYP (3) PLC'S
USE FOR 2316G AND 2326G SERIES
UP TO A 14 AWG (2.5mm²) WIRE



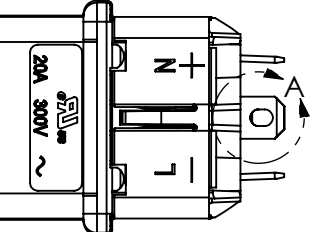
DETAIL A
SCALE 2 : 1
TYP (3) PLC'S
USE FOR 2336G SERIES
UP TO A 10 AWG (6.0mm²) WIRE



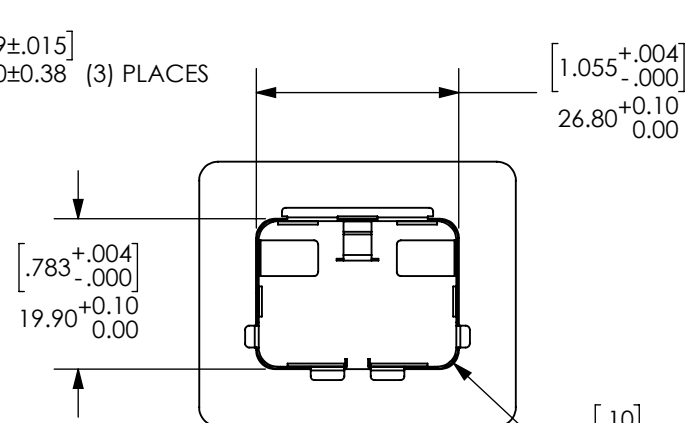
KEY "A" SHOWN



DIM "A"
(3) PLC'S



KEY "A" SHOWN



RECOMMENDED
PANEL CUT-OUT

KEY "A"	RATED CURRENT	CATALOG NUMBER	PANEL THICKNESS		DIM "A" ^{+0.15[.006]} _{-0.10[.004]}	
			INCH	MM	INCH	MM
	20 AMPS	2316G1	.031	0.80	.041	1.05
		2316G2	.047	1.20	.056	1.42
		2316G3	.039	1.00	.048	1.22
		2316G4	.063	1.60	.072	1.82
		2316G5	.079	2.00	.088	2.24
		2316G6	.098	2.50	.107	2.72
KEY "B"	RATED CURRENT	CATALOG NUMBER	PANEL THICKNESS		DIM "A" ^{+0.15[.006]} _{-0.10[.004]}	
			INCH	MM	INCH	MM
	20 AMPS	2326G1	.031	0.80	.041	1.05
		2326G2	.047	1.20	.056	1.42
		2326G3	.039	1.00	.048	1.22
		2326G4	.063	1.60	.072	1.82
		2326G5	.079	2.00	.088	2.24
		2326G6	.098	2.50	.107	2.72
KEY "C"	RATED CURRENT	CATALOG NUMBER	PANEL THICKNESS		DIM "A" ^{+0.15[.006]} _{-0.10[.004]}	
			INCH	MM	INCH	MM
	32 AMPS	2336G1	.031	0.80	.041	1.05
		2336G2	.047	1.20	.056	1.42
		2336G3	.039	1.00	.048	1.22
		2336G4	.063	1.60	.072	1.82
		2336G5	.079	2.00	.088	2.24
		2336G6	.098	2.50	.107	2.72

- NOTES:
- HOUSING MATERIAL: HIGH TEMP. NYLON + 30% GF, UL 94 V-0, HALOGEN FREE, GWIT 700°C
 - SPRING MATERIAL: STAINLESS STEEL
 - CONTACT MATERIAL: SILVER PLATED COPPER ALLOY
 - FOR USE WITH IEC320 C14 PANEL CUT-OUTS
 - ELECTRICAL RATING: 300V FOR CURRENT INTERRUPTION
 - TEMPERATURE RATING: 105°C
 - COMPLIANT TO LATEST RoHS DIRECTIVE AT TIME OF MANUFACTURING
 - CONTACTS SHOULD NOT BE SOLDERED DIRECTLY TO PCB.

REV.	DESCRIPTION	APPRV	DATE
5	ECN 2021-0081: "20A" MARKING WAS "10A"	CMS	8/24/2021
4	ECN 2017-0100 - ADDED NOTES 7 AND 8	CPD	9/26/2017
3	ECN 2017-0049 - ADDED NOTES 5 AND 6	CPD	5/19/2017
2	ECN 2016-0076 - ADDED BREAK AND 1.50mm DIMENSION	CPD	12/7/2016
1	ECRN-15878 AMPERAGE AND WIRE CHANGE	AHR	10/14/2015

DIMENSIONS ARE IN:	MM [INCH]	APPROVALS		<p>ANDERSON POWER PRODUCTS</p> <p>TITLE SAF-D-GRID® 2300 SERIES RECEPTACLES WITH CONTACTS</p>
UNLESS OTHERWISE STATED		DRAWN	AHR 5/29/2015	
TOLERANCES:		CHECKED	RJL 5/29/2015	
DECIMALS (INCH)	DECIMALS (MM)	ANGLES	MFG APPRV CHB 6/12/2015	
.XX ± .02	.X ± .5	± 2°	QC APPRV ASF 6/15/2015	
SURFACE FINISH:		ENG APPRV	CLY 6/11/2015	SIZE B
MACHINED 3.2µ [128µin]				DWG NO. B02240S1
MOLDED 1.6µ [64µin]				REV. 5
MATERIAL: SEE NOTES				SCALE NONE
FINISH: N/A				CADFILE 04362
3rd ANGLE PROJECTION		-CAD GENERATED DRAWING- DO NOT MANUALLY UPDATE DO NOT SCALE		SHEET 1 OF 1