



698-960 & 1710-2700 MHz LTE WORLD BAND ANTENNA

**Part Numbers: 2367286-1, 2367286-2,
2367286-4, 2367286-5,
2367286-6**

FEATURES & BENEFITS

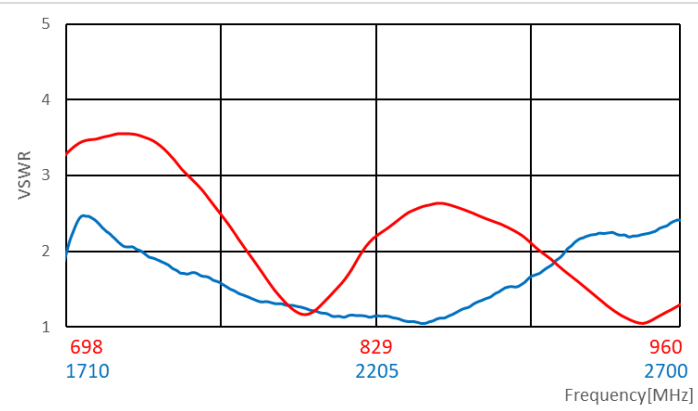
- Adhesive backing on the FPC simplifies mounting within the device
- Omnidirectional coverage
- Efficient design reduces power usage
- No matching components required
- Ground-plane independent design

SPECIFICATIONS

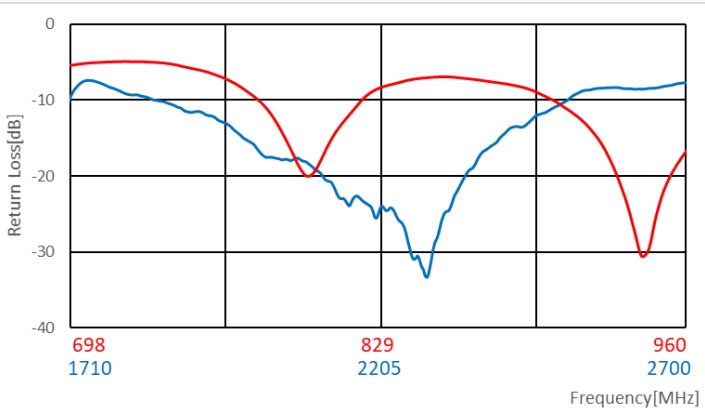
Frequency Range (MHz)	698-960	1710-2700
VSWR	< 3.6:1	< 2.5:1
Efficiency	55%	60%
Average Gain	-2.7dBi	-2.5dBi
Peak Gain	3.0dBi	3.0dBi
Power Handling	10 Watt cw	
Feed Point Impedance	50 ohms unbalanced	
Polarization	Linear	
Size	65 mm x 15 mm x 0.2 mm	
Weight	< 2.0 g	
Mounting	Adhesive Tape	
Mating Connector	MHF and MHF4L type, refer to page6	
Cable (coaxial)	1.13mm Dia. refer to page6	
Operating Temperature	-40 to +85°C	
Storage Temperature	-40 to +85°C	
Hazardous Materials	A certificate of conformance is available from the product page on TE website.	

RF DATA

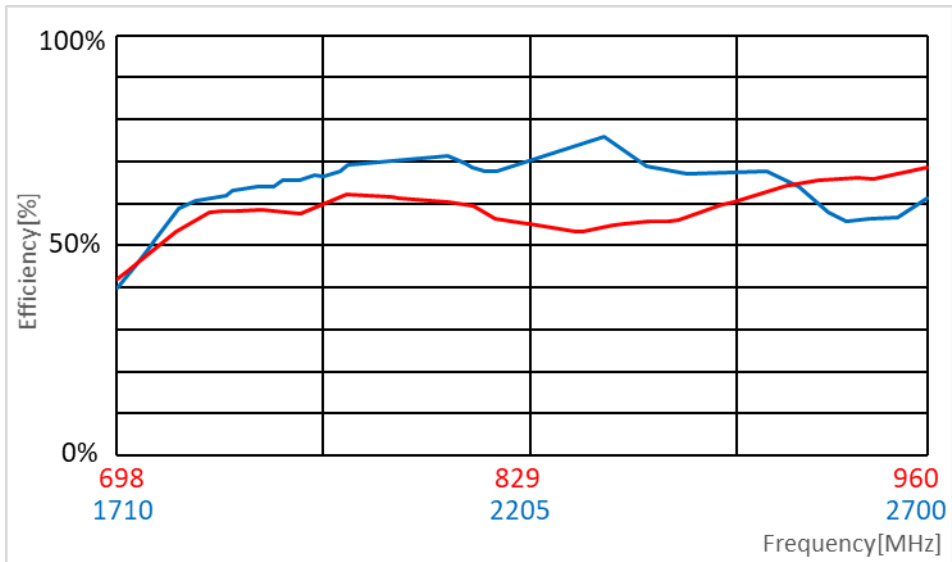
VSWR



Return Loss

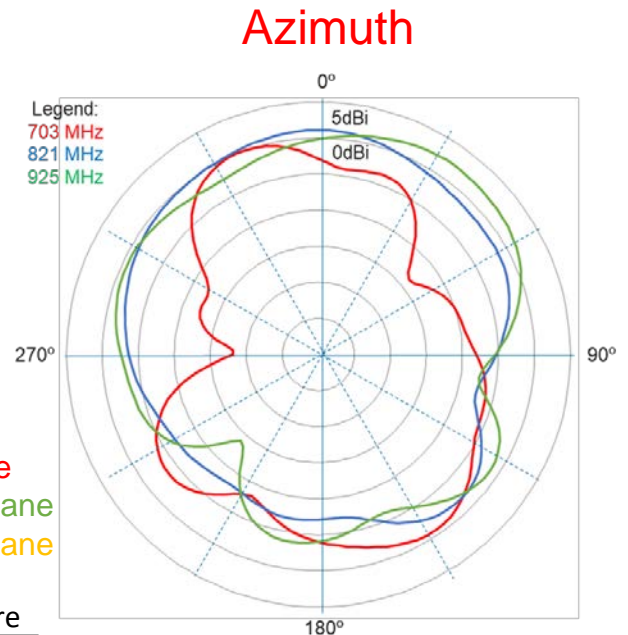
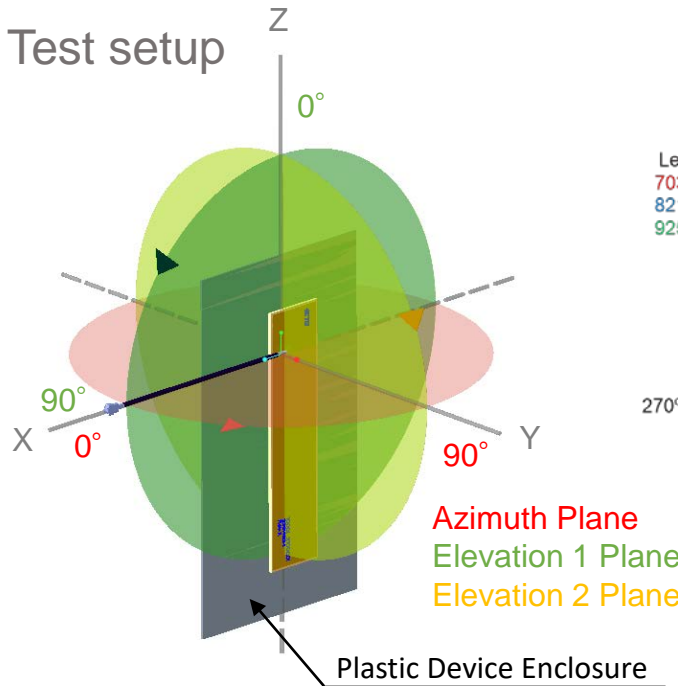


Efficiency



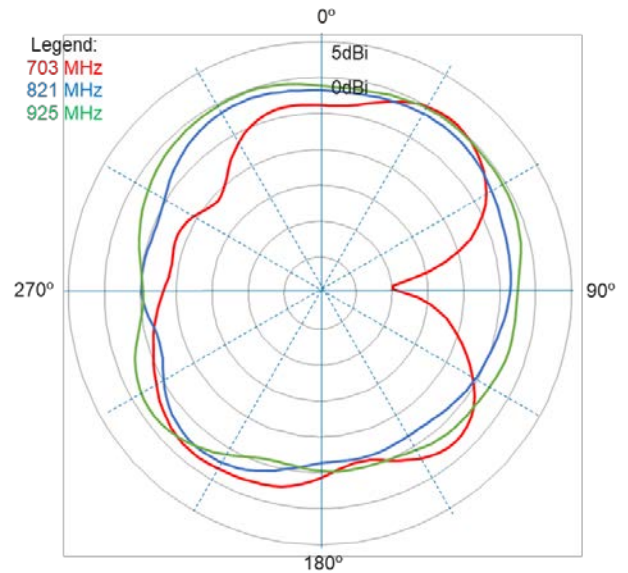
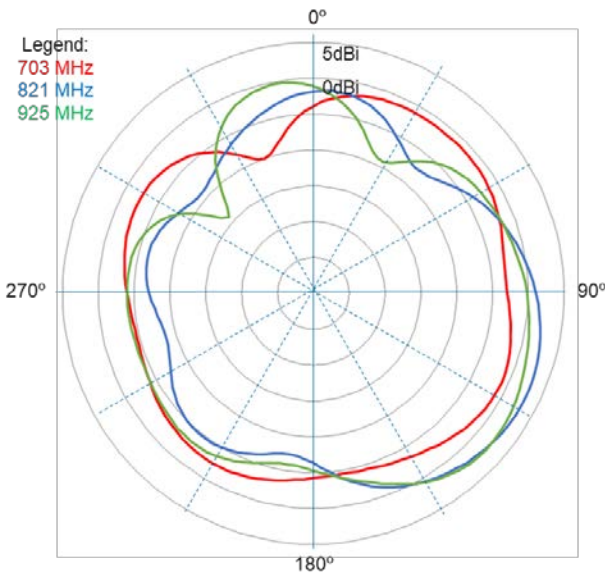
Data measured in free space and on plastic device enclosure

RADIATION PATTERN



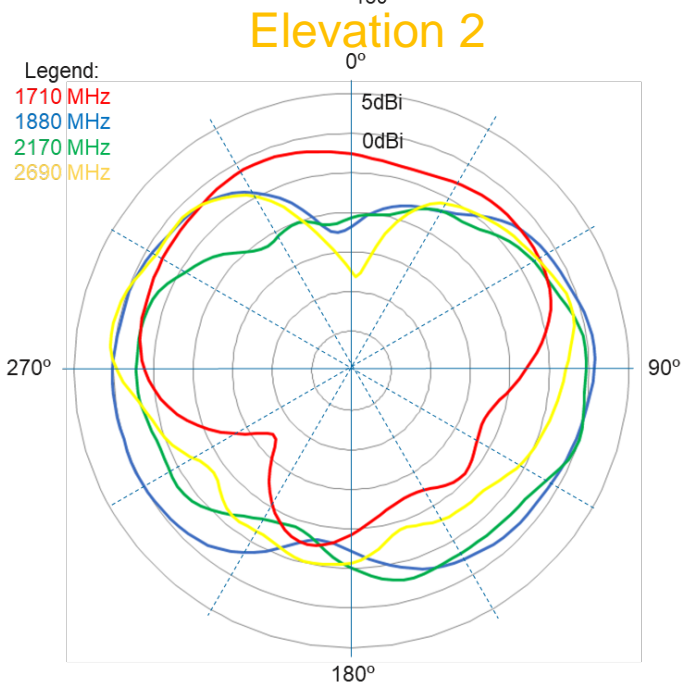
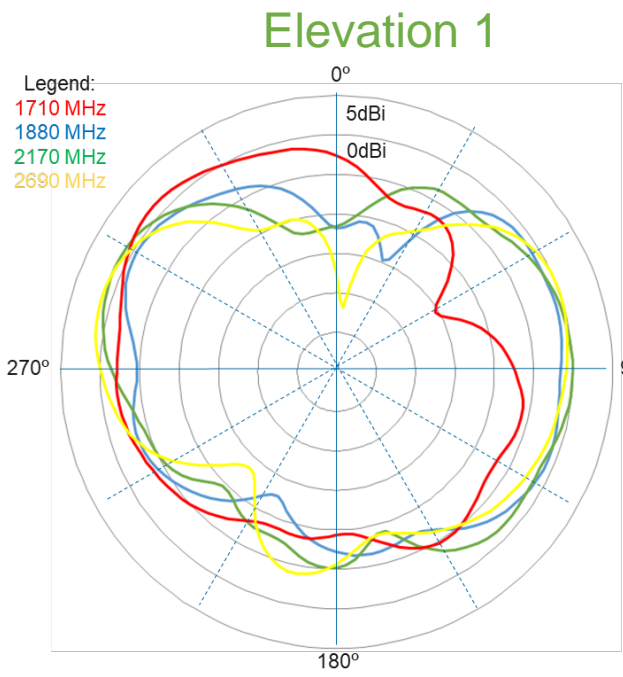
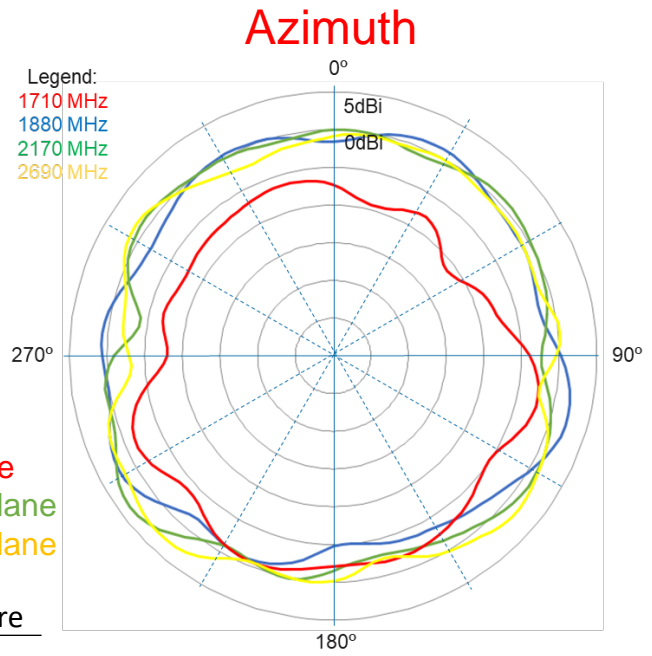
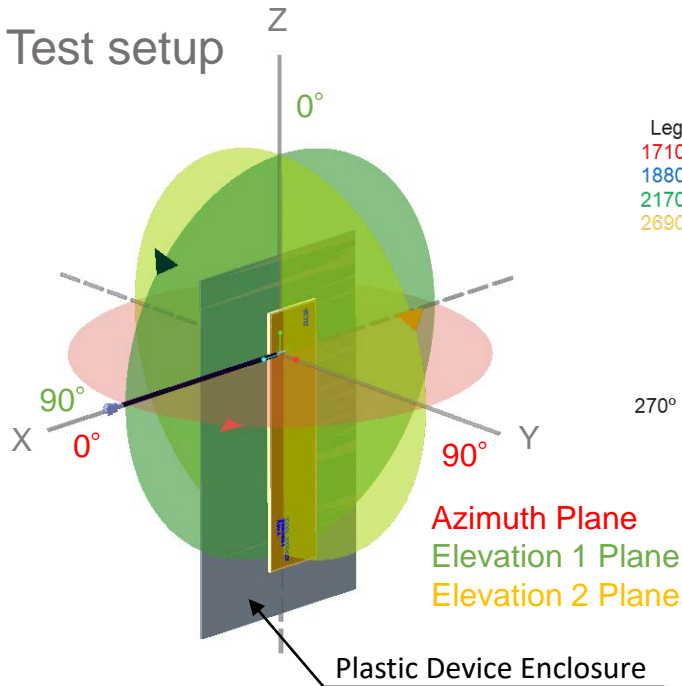
Elevation 1

Elevation 2



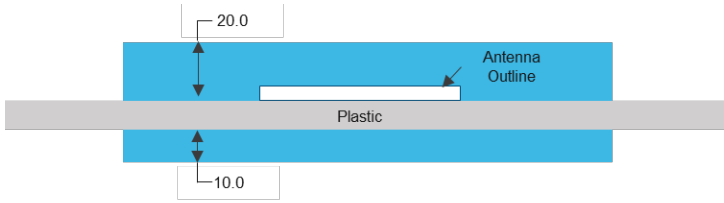
Data measured in free space and on plastic device enclosure

RADIATION PATTERN



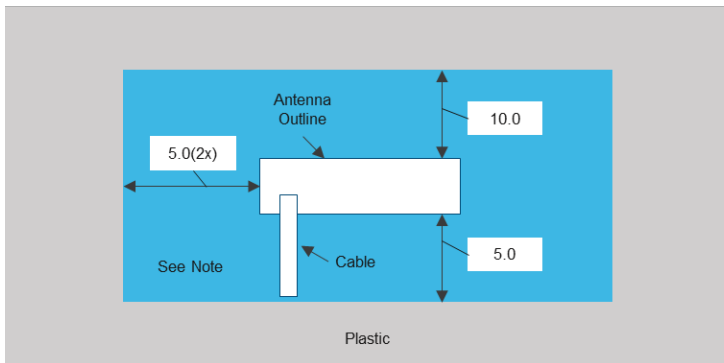
Data measured in free space and on plastic device enclosure

KEEP OUT AREA



NOTES

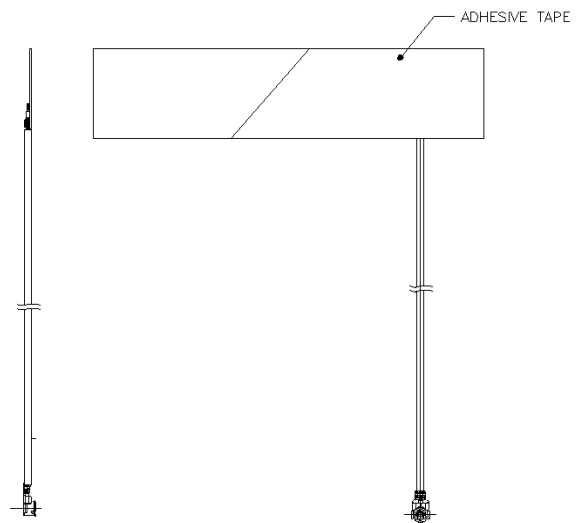
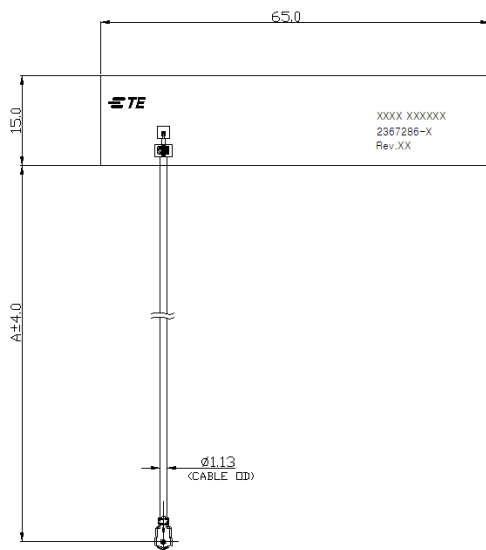
1. Antenna designed to be mounted on plastic cover.
2. Area in blue indicates Keep Out Area.
3. For more information please call TE.



Dimension: mm
Diagram is not to scale

DIMENSIONS

(Refer to Page 6 for dimension "A")



Dimensions: mm
Diagram is not to scale