

# High Frequency Ceramic Solutions

BT/WiFi and UWB Mini Antenna, Single-feed, Corner Mount

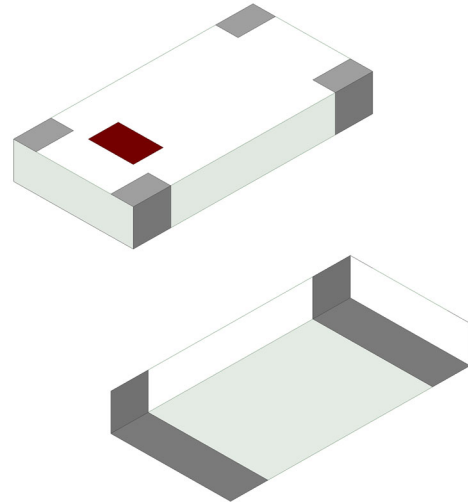
P/N 2450AD18A7250

Detail Specification: 1/21/2021

Page 1 of 6

## General Specifications

<b>Part Number</b>	2450AD18A7250	
<b>Frequency (MHz)</b>	2400 - 2480	6000 - 8500
<b>Peak Gain (dBi typ.)</b>	+3.0 (YZ-cut)	+5.5 (YZ-cut)
<b>Average Gain (dBi typ.)</b>	+0.4 (YZ-cut)	+1.0 (YZ-cut)
<b>Return Loss (dB)</b>	6.5 min.	6.5 min.
<b>Radiation Efficiency %<sup>1</sup></b>	78	87
<b>Reel Quantity</b>	3000	
<b>Operating Temp.</b>	-40°C to +85°C	
<b>Power Capacity (W)</b>	3 max. (CW)	
<b>Recommended Storage Conditions and Period for unused T&amp;R Product</b>	+5°C to +35°C Humidity 45 - 75% RH 18 months max.	

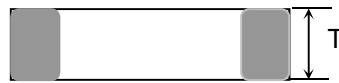


## Part Number Explanation

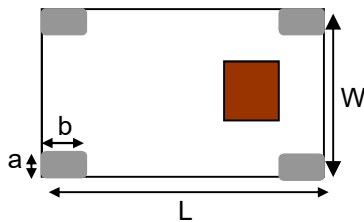
<b>P/N Suffix</b>	<b>Packing Style</b>	Bulk (loose)	Suffix = S	E.g. 2450AD18A7250S
		T & R	Suffix = E	E.g. 2450AD18A7250E
		100% Tin	Suffix = E or S	E.g. 2450AD18A7250(E or S)
	<b>Evaluation Board</b>	2450AD18A7250-EB1SMA (Pre-tuned with SMA connectors)		

## Mechanical Dimensions

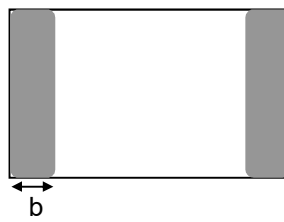
	In	mm
<b>L</b>	0.126 ± 0.008	3.20 ± 0.20
<b>W</b>	0.063 ± 0.008	1.60 ± 0.20
<b>T</b>	0.020 ± 0.004	0.50 ± 0.10
<b>a</b>	0.012 +0.004/+0.008	0.30 +0.1/-0.2
<b>b</b>	0.020 ± 0.004	0.50 ± 0.10



<Side view>



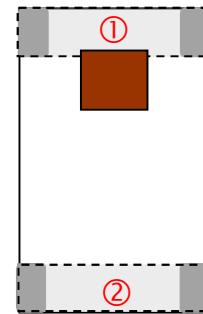
<Top view>



<Bottom view>

## Terminal Configuration

No.	Function
<b>1</b>	Feed Point
<b>2</b>	NC



# High Frequency Ceramic Solutions

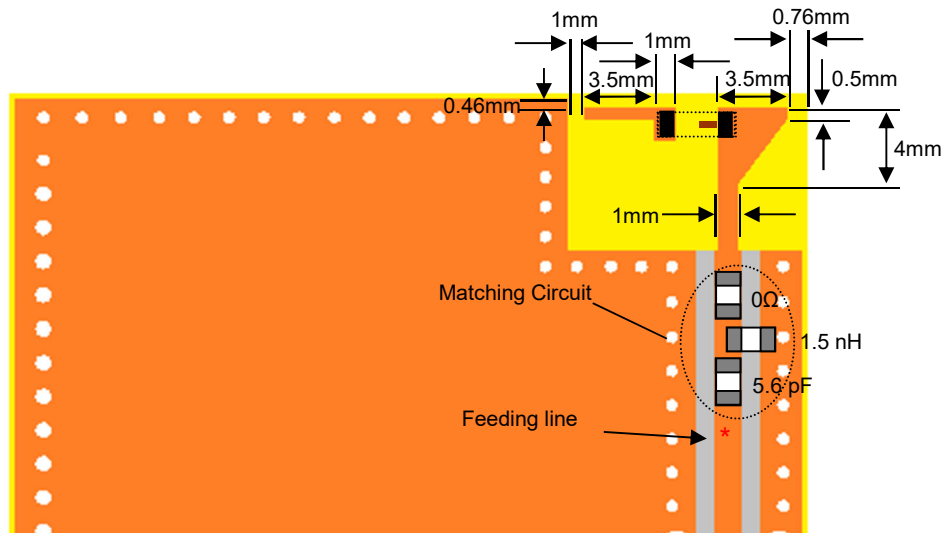
BT/WiFi and UWB Mini Antenna, Single-feed, Corner Mount



P/N 2450AD18A7250

Detail Specification: 1/21/2021

Page 2 of 6

## Layout Recommendations



-  Solder Resist
-  Land

<sup>1</sup>Attention: Matching circuits and component values will be different on the client's design, depending on PCB layout, geometry, etc. It is recommended that the designer leave available slots for a "pi" (or shunt-series-shunt) network. The antenna matching network values you see here are used when antenna is mounted on Johanson's evaluation board.

Need help laying out the antenna, want us to review your antenna design (free!), require the Gerber files for this EVB, or would like us to validate the new tuning values of your PCB (fee may apply) go to:

<https://www.johansontechnology.com/ask-a-question>

Orderable EVB for evaluation, it comes with a female SMA connector. Go to: <https://www.johansontechnology.com/component/request-a-sample> and ask for p/n 2450AD47A1590-EB1SMA

\* Line width should be designed to match 50Ω characteristic impedance, depending on PCB material, thickness, and preferably CPWG (co-planar wave guide) type.

Johanson Technology, Inc. reserves the right to make design changes without notice. Please confirm the specifications and delivery conditions when placing your order. All sales are subject to Johanson Technology, Inc. terms and conditions.



<https://www.johansontechnology.com>

4001 Calle Tecate • Camarillo, CA 93012 • TEL 805.389.1166 FAX 805.389.1821

Ver 1.1

2021 Johanson Technology, Inc. All Rights Reserved

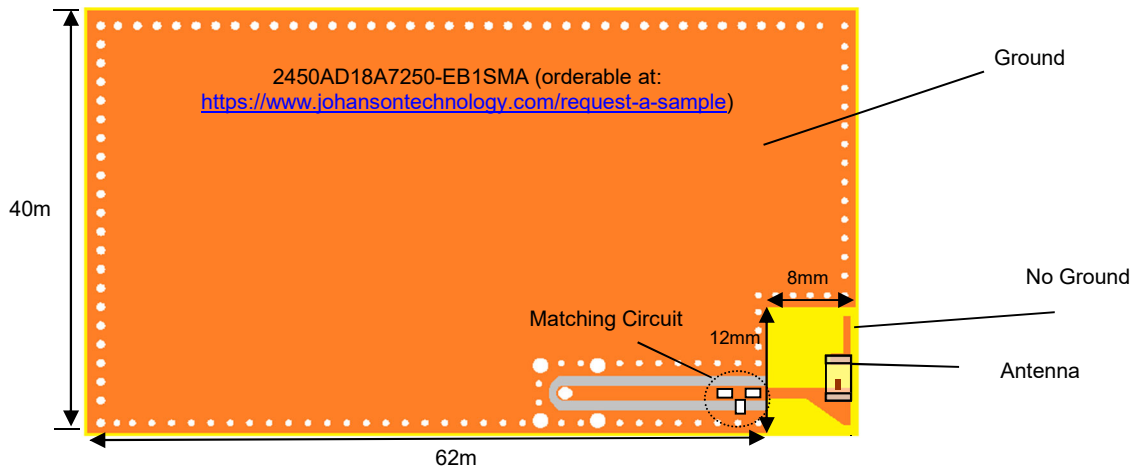
# High Frequency Ceramic Solutions

BT/WiFi and UWB Mini Antenna, Single-feed, Corner Mount  
 Detail Specification: 1/21/2021

P/N 2450AD18A7250  
 Page 3 of 6

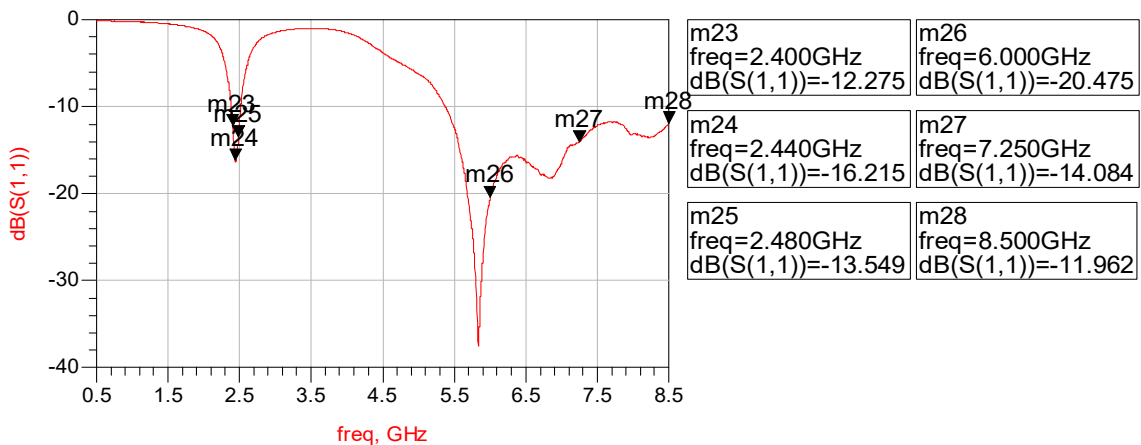
## Johanson Technology Evaluation Board Mounting Configuration

❖ Test Board-Top View (Unit in mm)



## Typical Electrical Characteristics (T=25°C)

Antenna Return Loss with Matching Circuits On Johanson EVB



Johanson Technology, Inc. reserves the right to make design changes without notice. Please confirm the specifications and delivery conditions when placing your order. All sales are subject to Johanson Technology, Inc. terms and conditions.



<https://www.johansontechnology.com>

4001 Calle Tecate • Camarillo, CA 93012 • TEL 805.389.1166 FAX 805.389.1821

Ver 1.1

2021 Johanson Technology, Inc. All Rights Reserved

# High Frequency Ceramic Solutions

BT/WiFi and UWB Mini Antenna, Single-feed, Corner Mount

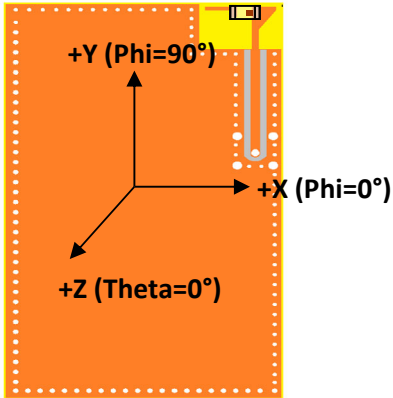
P/N 2450AD18A7250

Detail Specification: 1/21/2021

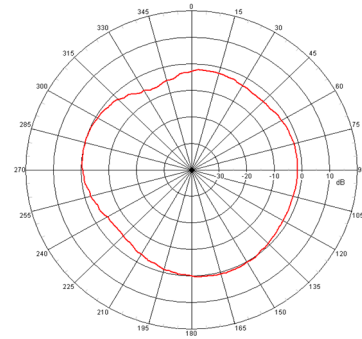
Page 4 of 6

## Typical Radiation Patterns

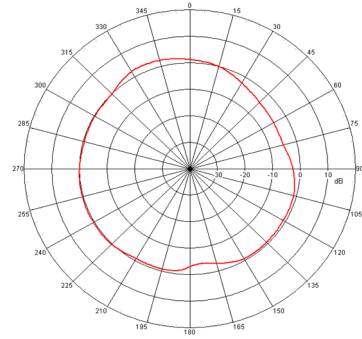
❖ Radiation Patterns @ 2.44GHz



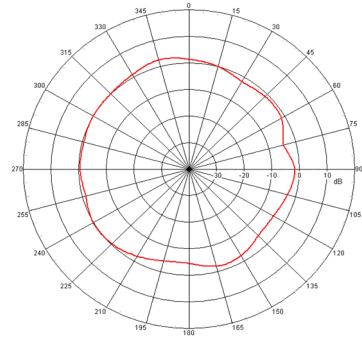
XY-Plane



YZ-Plane



XZ-Plane



Johanson Technology, Inc. reserves the right to make design changes without notice. Please confirm the specifications and delivery conditions when placing your order. All sales are subject to Johanson Technology, Inc. terms and conditions.



<https://www.johansontechnology.com>

4001 Calle Tecate • Camarillo, CA 93012 • TEL 805.389.1166 FAX 805.389.1821

Ver 1.1

2021 Johanson Technology, Inc. All Rights Reserved

# High Frequency Ceramic Solutions

BT/WiFi and UWB Mini Antenna, Single-feed, Corner Mount

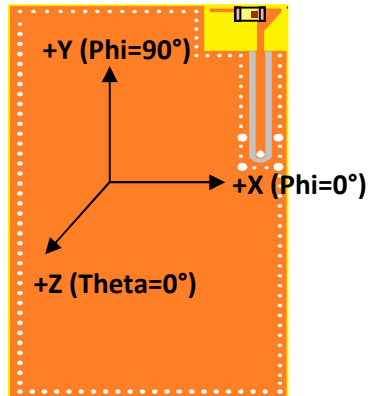
P/N 2450AD18A7250

Detail Specification: 1/21/2021

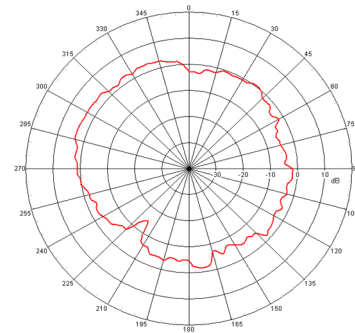
Page 5 of 6

## Typical Radiation Patterns

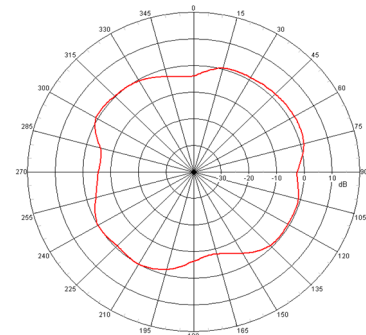
❖ Radiation Patterns @ 7.250GHz



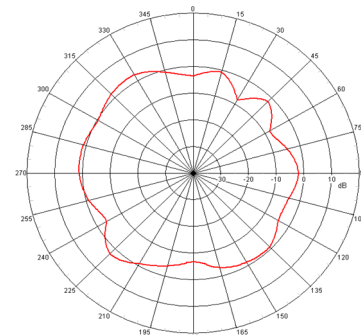
XY-Plane



YZ-Plane



XZ-Plane



Johanson Technology, Inc. reserves the right to make design changes without notice. Please confirm the specifications and delivery conditions when placing your order. All sales are subject to Johanson Technology, Inc. terms and conditions.



<https://www.johansontechnology.com>

4001 Calle Tecate • Camarillo, CA 93012 • TEL 805.389.1166 FAX 805.389.1821

Ver 1.1

2021 Johanson Technology, Inc. All Rights Reserved