

# "High Frequency Ceramic Solutions"

## 2.4 GHz Antenna

P/N 2450AT42D0100

Detail Specification: 5/4/2016

Page 1 of 8

### General Specifications

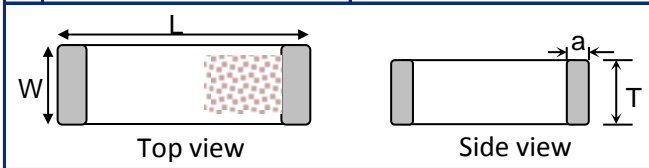
<b>Part Number</b>	2450AT42D0100	<b>Input Power</b>	2W max. (CW)
<b>Frequency (MHz)</b>	2400 - 2500 MHz	<b>Operating Temperature</b>	-40 to +85°C
<b>Peak Gain (XZ-V)</b>	0.5 dBi typ.	<b>Recommended Storage Conditions</b>	+5 to +35°C, 45~75%RH
<b>Average Gain (XZ-V)</b>	-2.0 dBi typ.	<b>Reel Quantity</b>	18 months max.
<b>Return Loss</b>	6 dB min.		1,000

### Part Number Explanation

<b>P/N Suffix</b>	<b>Packing Style</b>	Bulk (loose)	Suffix = S	eg. 2450AT42D0100S
		T & R	Suffix = E	eg. 2450AT42D0100E
		100% Tin	Suffix = E or S	eg. 2450AT42D0100(E or S)
	<b>Evaluation Board</b>	2450AT42D0100-EB1SMA		

### Mechanical Dimensions

	In	mm
<b>L</b>	0.197 ± 0.008	5.00 ± 0.20
<b>W</b>	0.079 ± 0.008	2.00 ± 0.20
<b>T</b>	0.118 ± +.004/-0.008	3.00 ± +0.1/-0.2
<b>a</b>	0.020 ± 0.012	0.50 ± 0.30



### Terminal Configuration

No.	Function
<b>1</b>	Feeding Point
<b>2</b>	NC*



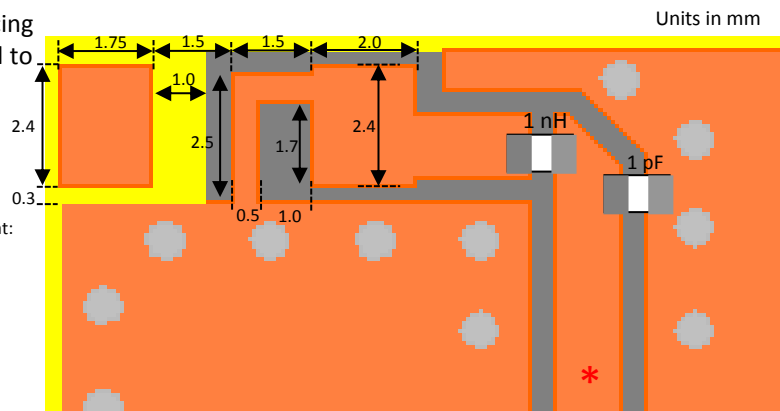
\*This terminal must be soldered for anchoring and functionality purposes

### Mounting Considerations I (smaller keep out area)

Mount these devices with mark facing up. \*Line width should be designed to provide 50 Ω impedance matching characteristics.

Want the layout file of this? Send us a message at:  
<http://www.johansontechnology.com/ask-a-question>

JTI P/N for Matching Circuit:\*\*  
 Inductor (1.0nH): L-07C1N0SV6T  
 Cap (1.0pF): 500R07S1N0BV4T



\*\*matching circuit and component values will depend on PCB layout, thickness, material, etc.



[www.johansontechnology.com](http://www.johansontechnology.com)

4001 Calle Tecate • Camarillo, CA 93012 • TEL 805.389.1166 FAX 805.389.1821

Ver 1.1

2016 Johanson Technology, Inc. All Rights Reserved

# "High Frequency Ceramic Solutions"

2.4 GHz Antenna

P/N 2450AT42D0100

Detail Specification: 5/4/2016

Page 2 of 8

## Mounting Considerations I: Evaluation Board Dimensions and Keep-out Area

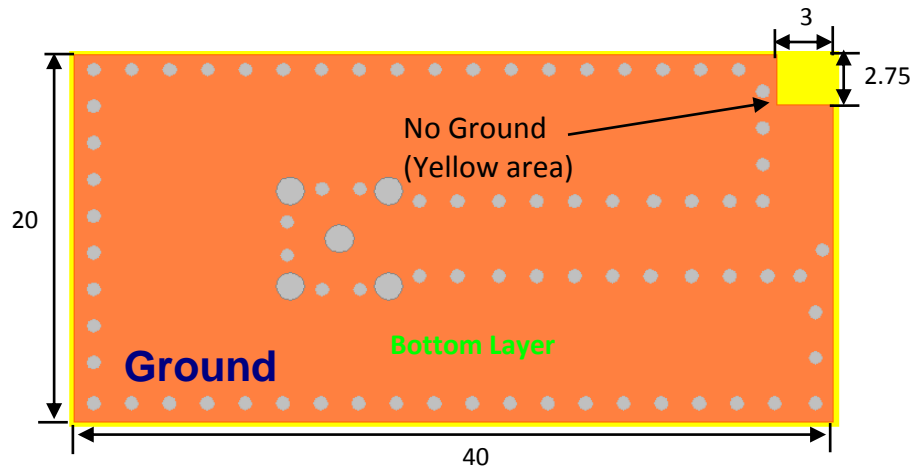
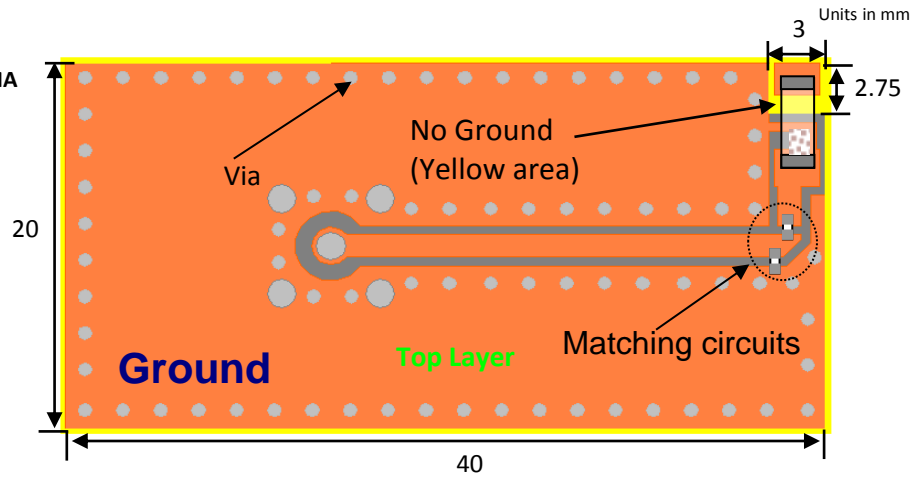
Johanson Test Board

(orderable) p/n:

2450AT42D0100-EB1SMA

50Ω Feed Line (make sure proper calculation are

Yellow area- complete GND and layer clearance free of metal below and above.



**\*\*Note 2:** It is recommended that the designer leave available slots for a "pi" (or shunt-series-shunt) network. The antenna matching network values above are used when antenna is mounted on Johanson's evaluation board. The matching values on client's PCB will be different. Go to: [www.johansontechnology.com/tuning](http://www.johansontechnology.com/tuning) and see how to obtain the new values. If you need further help, such as needing the layout file of the above, contact our RF Applications Eng. Team at: [www.johansontechnology.com/ask-a-question](http://www.johansontechnology.com/ask-a-question)

Johanson Technology, Inc. reserves the right to make design changes without notice. Please confirm the specifications and delivery conditions when placing your order. All sales are subject to Johanson Technology, Inc. terms and conditions.



[www.johansontechnology.com](http://www.johansontechnology.com)

4001 Calle Tecate • Camarillo, CA 93012 • TEL 805.389.1166 FAX 805.389.1821

Ver 1.1

2016 Johanson Technology, Inc. All Rights Reserved

# "High Frequency Ceramic Solutions"

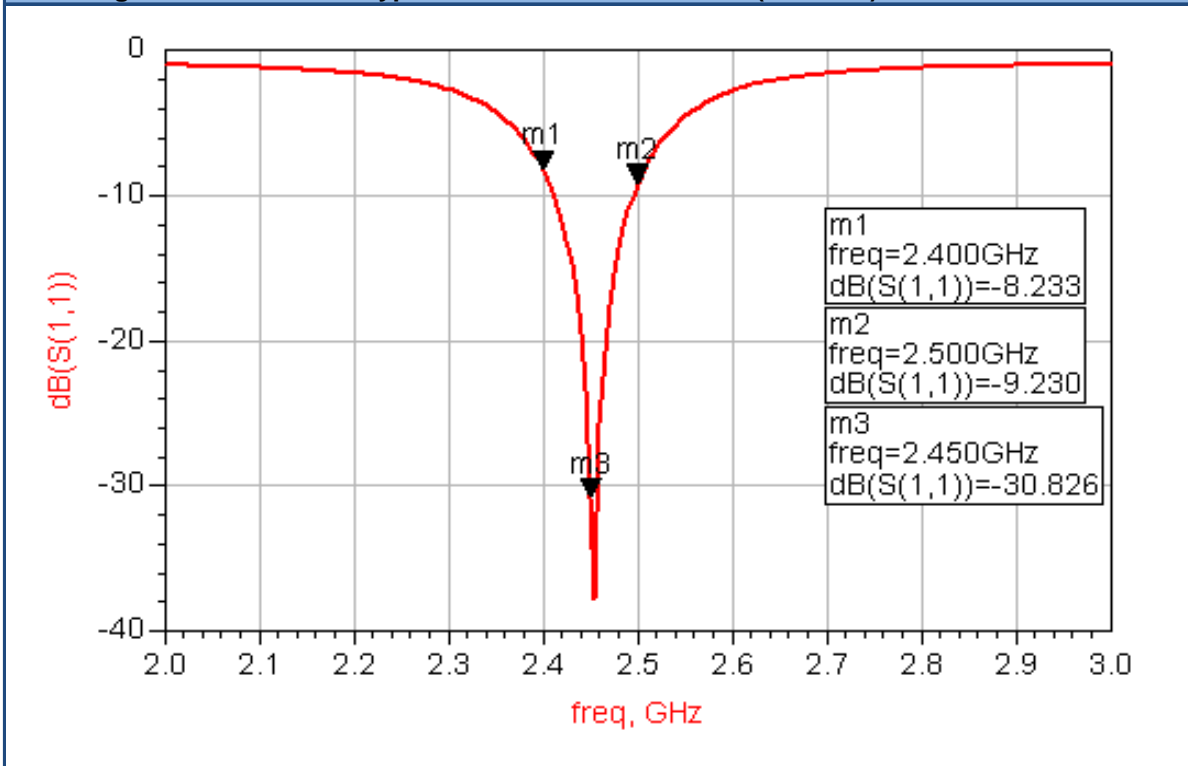
2.4 GHz Antenna

P/N 2450AT42D0100

Detail Specification: 5/4/2016

Page 3 of 8

## Mounting Considerations I: Typical Electrical Performance (T = 25°C)



Feel free to contact us if you have any questions regarding the implementation of this antenna in your PCB's layout. We'll be happy to guide you in how to maximize the antenna's performance.

You can contact us here:

[www.johansontechnology.com/ask-a-question](http://www.johansontechnology.com/ask-a-question)

Johanson Technology, Inc. reserves the right to make design changes without notice. Please confirm the specifications and delivery conditions when placing your order. All sales are subject to Johanson Technology, Inc. terms and conditions.



[www.johansontechnology.com](http://www.johansontechnology.com)

4001 Calle Tecate • Camarillo, CA 93012 • TEL 805.389.1166 FAX 805.389.1821

Ver 1.1

2016 Johanson Technology, Inc. All Rights Reserved

# "High Frequency Ceramic Solutions"

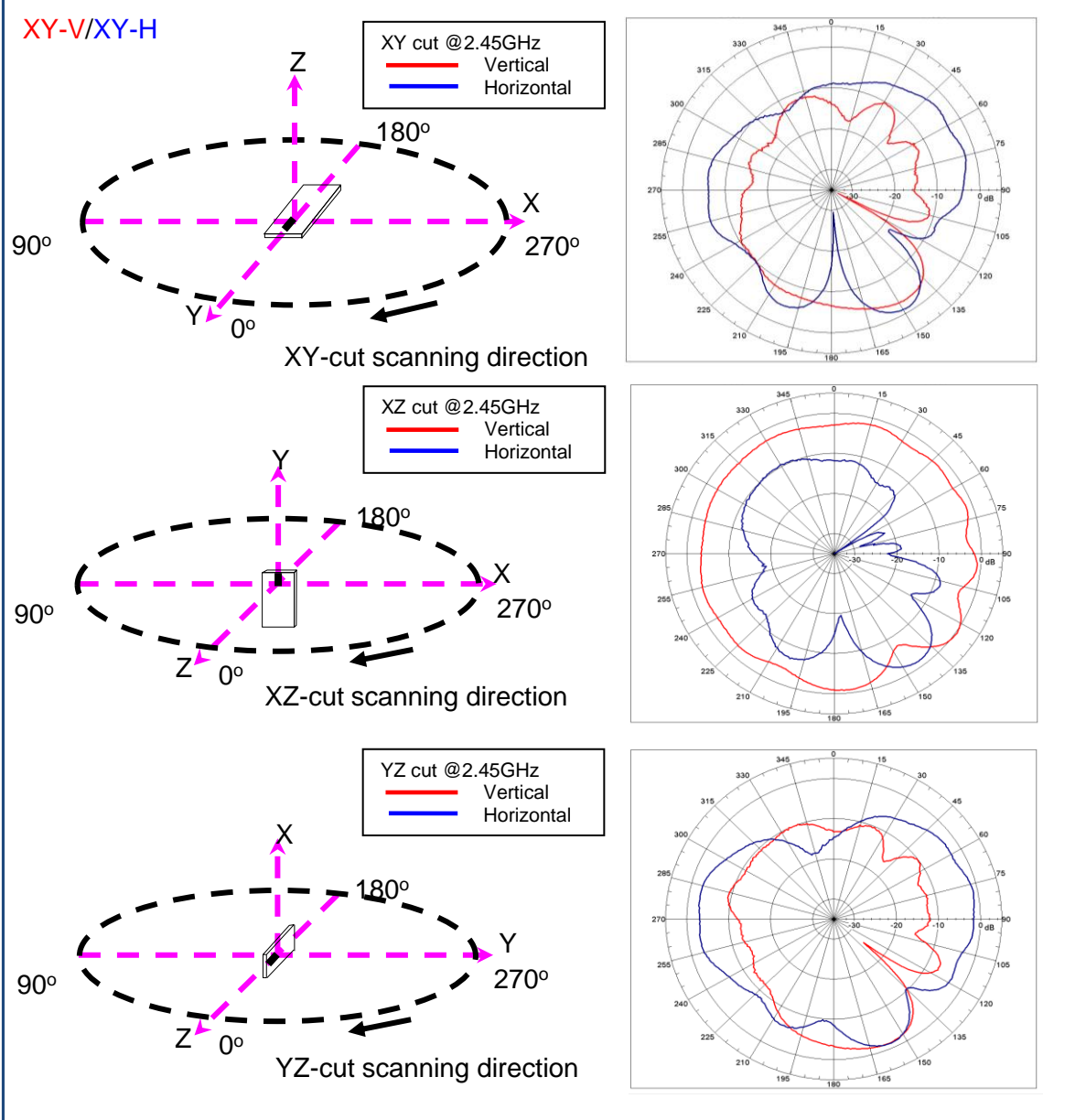
2.4 GHz Antenna

P/N 2450AT42D0100

Detail Specification: 5/4/2016

Page 4 of 8

## Mounting Considerations I: Typical EM Radiation Pattern (T = 25°C)



Johanson Technology, Inc. reserves the right to make design changes without notice. Please confirm the specifications and delivery conditions when placing your order. All sales are subject to Johanson Technology, Inc. terms and conditions.



[www.johansontechnology.com](http://www.johansontechnology.com)

4001 Calle Tecate • Camarillo, CA 93012 • TEL 805.389.1166 FAX 805.389.1821

Ver 1.1

2016 Johanson Technology, Inc. All Rights Reserved

# "High Frequency Ceramic Solutions"

## 2.4 GHz Antenna

Detail Specification: 5/4/2016

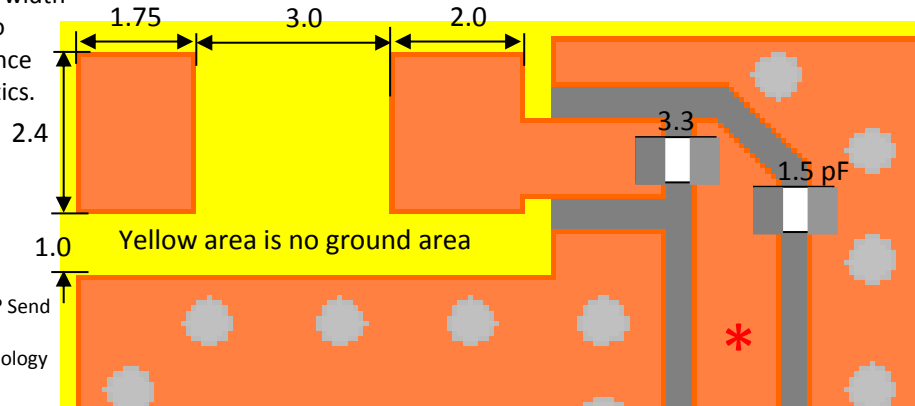
P/N 2450AT42D0100

Page 5 of 8

### Mounting Considerations II

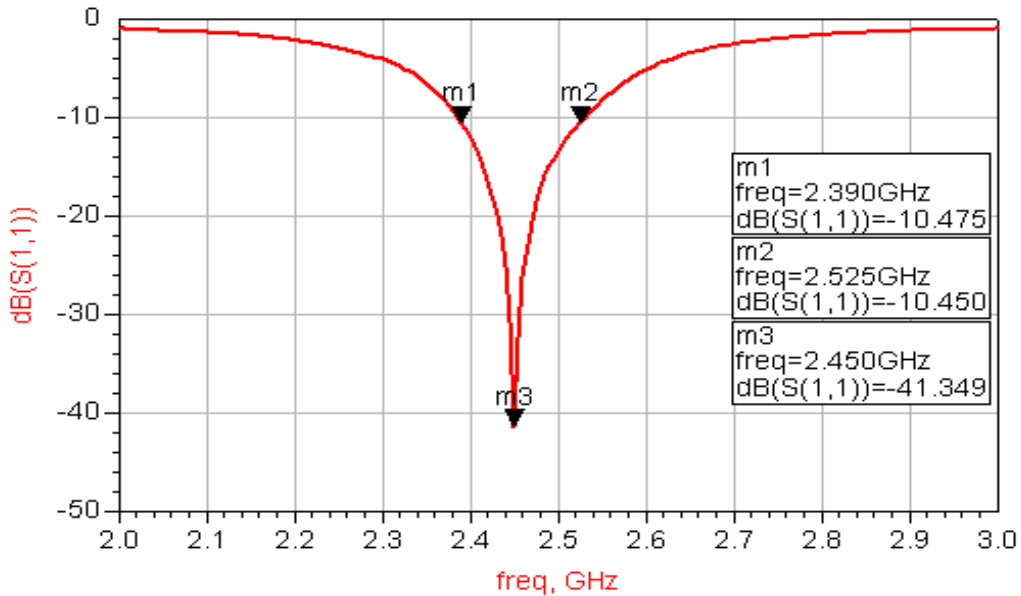
Mount these devices with mark facing up. \*Line width should be designed to provide 50  $\Omega$  impedance matching characteristics.

Units in mm



Want the layout file of this? Send us a message at:  
<http://www.johansontechnology.com/ask-a-question>

### Mounting Considerations II: Typical Electrical Performance (T = 25°C)



Johanson Technology, Inc. reserves the right to make design changes without notice. Please confirm the specifications and delivery conditions when placing your order. All sales are subject to Johanson Technology, Inc. terms and conditions.



[www.johansontechnology.com](http://www.johansontechnology.com)

4001 Calle Tecate • Camarillo, CA 93012 • TEL 805.389.1166 FAX 805.389.1821

Ver 1.1

2016 Johanson Technology, Inc. All Rights Reserved

# "High Frequency Ceramic Solutions"

2.4 GHz Antenna

P/N 2450AT42D0100

Detail Specification: 5/4/2016

Page 6 of 8

## Mounting Considerations II: Evaluation Board Dimensions and Keep-out Area

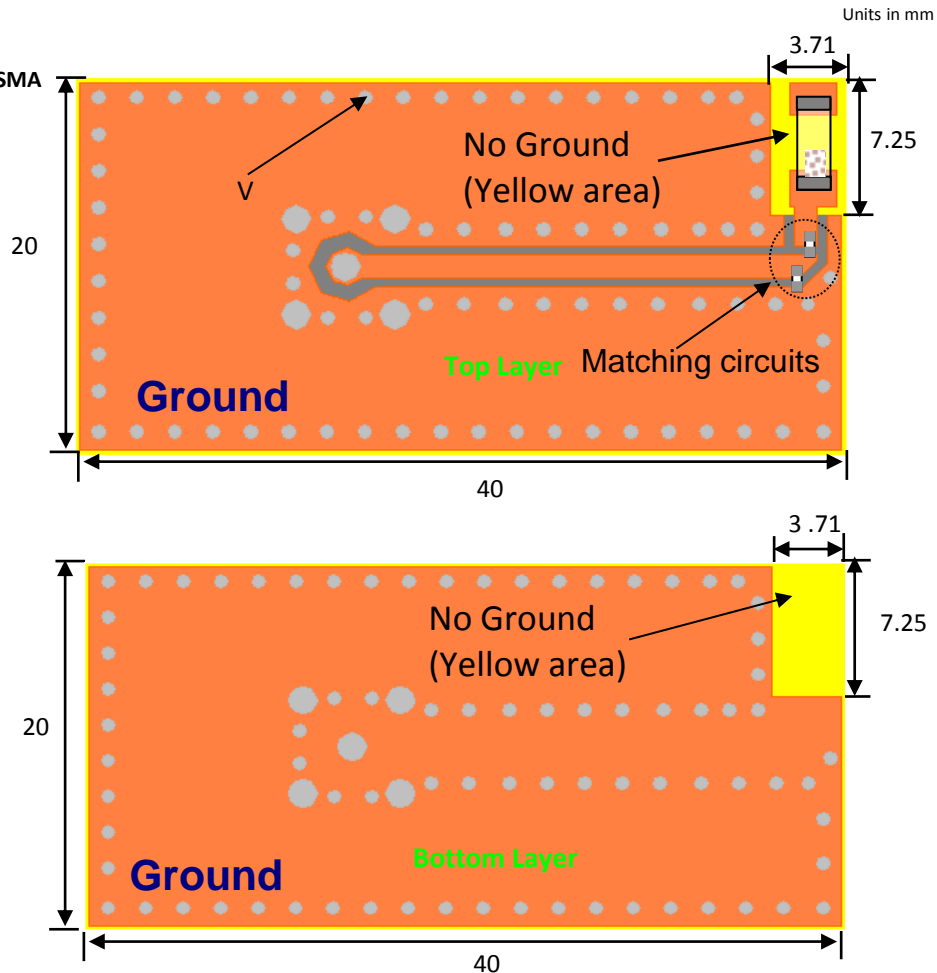
Johanson Test Board

(orderable) p/n:

2450AT42D0100-EB2SMA

50Ω Feed Line (make sure proper calculation are

Yellow area- complete GND and layer clearance free of metal below and above.



**\*\*Note 2:** It is recommended that the designer leave available slots for a "pi" (or shunt-series-shunt) network. The antenna matching network values above are used when antenna is mounted on Johanson's evaluation board. The matching values on client's PCB will be different. Go to: [www.johansontechnology.com/tuning](http://www.johansontechnology.com/tuning) and see how to obtain the new values. If you need further help, such as needing the layout file of the above, contact our RF Applications Eng. Team at: [www.johansontechnology.com/ask-a-question](http://www.johansontechnology.com/ask-a-question)

Johanson Technology, Inc. reserves the right to make design changes without notice. Please confirm the specifications and delivery conditions when placing your order. All sales are subject to Johanson Technology, Inc. terms and conditions.



[www.johansontechnology.com](http://www.johansontechnology.com)

4001 Calle Tecate • Camarillo, CA 93012 • TEL 805.389.1166 FAX 805.389.1821

Ver 1.1

2016 Johanson Technology, Inc. All Rights Reserved

# "High Frequency Ceramic Solutions"

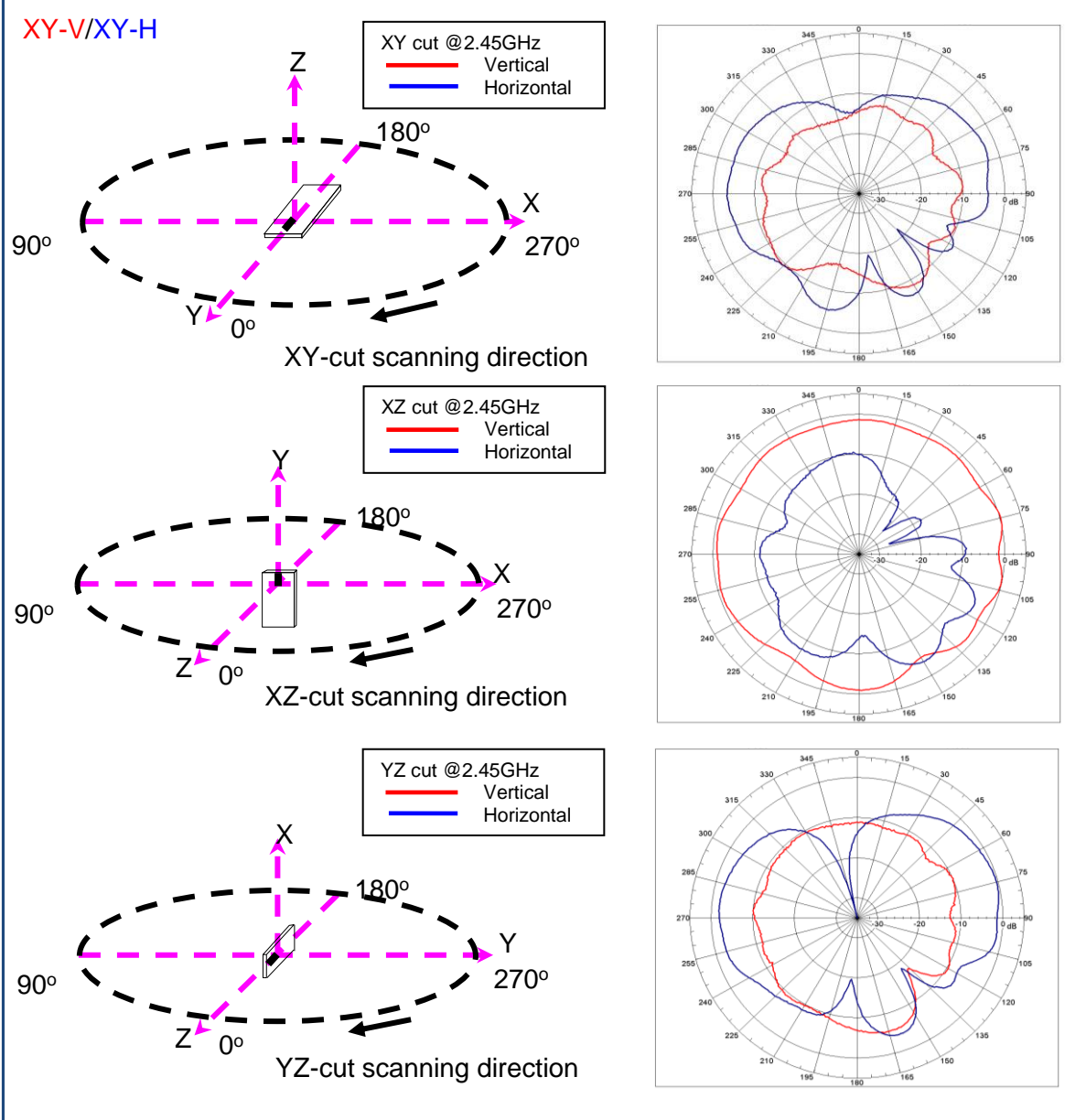
2.4 GHz Antenna

Detail Specification: 5/4/2016

P/N 2450AT42D0100

Page 7 of 8

## Mounting Considerations II: Typical EM Radiation Pattern (T = 25°C)



Johanson Technology, Inc. reserves the right to make design changes without notice. Please confirm the specifications and delivery conditions when placing your order. All sales are subject to Johanson Technology, Inc. terms and conditions.



4001 Calle Tecate • Camarillo, CA 93012 • TEL 805.389.1166 FAX 805.389.1821

Ver 1.1

[www.johansontechnology.com](http://www.johansontechnology.com)

2016 Johanson Technology, Inc. All Rights Reserved