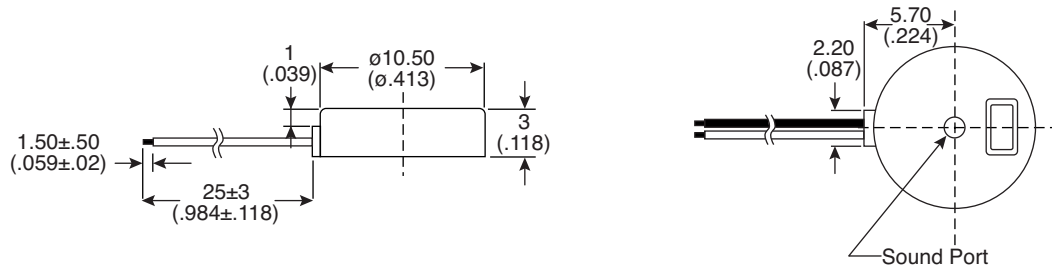
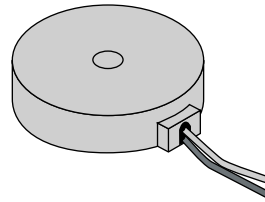
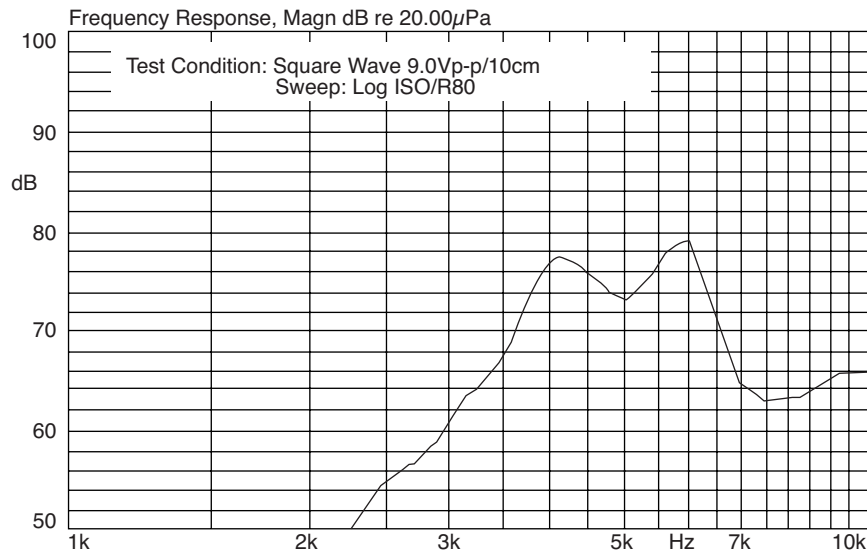


Part Number:

254-PB504-ROX



Piezoelectric Buzzer
(External Drive)



KT-400406

Electrical Specifications:

- Sound Pressure Level: 72dB min. at 4.0KHz/9.0Vp-p Square Wave/10cm.
- Capacitance: 9,500pF \pm 30% at 120Hz
- Current Consumption: 3mA max. at 4.0KHz/9.0Vp-p Square Wave
- Allowable Input Voltage: 15Vp-p max.

Mechanical Specifications:

- Operating Temperature Range: -20°C to +60°C
- Storage Temperature Range: -30°C to +70°C

Materials:

- Case: ABS
- Lead Wire: 32AWG
- Weight: 0.3 grams

Note:

- RoHS compliant by exemption