

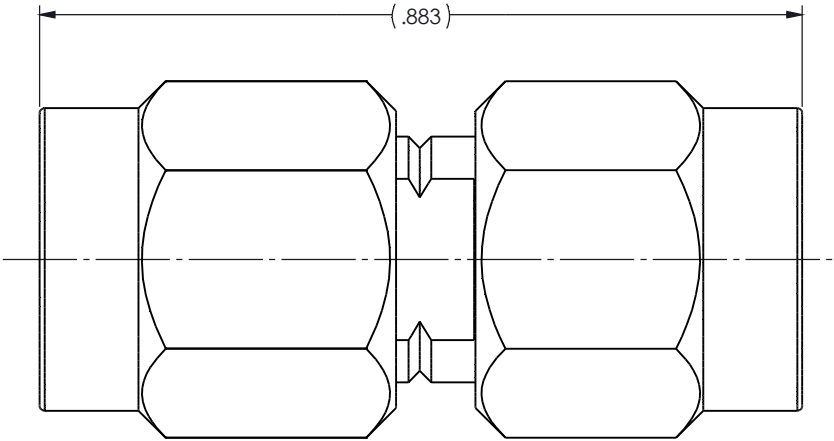
This document, including the design, configuration and mechanical features revealed herein are the sole, confidential and proprietary property of Winchester Interconnect. Reproduction or use thereof, in whole or part, is prohibited without the prior written consent of Winchester Interconnect.

REV	DESCRIPTION	DATE	APRD
B	CORRECT BEAD MATERIAL ER076415	02/08/2019	ASNZ



NOTES:
 MATERIAL:
 STAINLESS STEEL 303 PER ASTM A582
 BERYLLUM COPPER PER ASTM-B-196
 OXIDE NORYL

FINISH:
 CENTER CONDUCTORS AND SOLDER COMPONENTS SHALL BE GOLD PLATED ER MIL-G-45204
 TYPE II, CLASS 1 OVER NICKEL PLATE PR QQ-N-290.
 BODY AND BODY COMPONENTS SHALL BE PASSIVATED PER AMS 2700.

ELECTRICAL CHARACTERISTICS:
 FREQUENCY: DC-40 GHz
 VSWR: 1.3:1 TO 40 GHz



UNLESS OTHERWISE SPECIFIED:
 DIMENSIONS ARE IN INCHES
 TOLERANCES:
 .X: ±0.030
 .XX: ±0.010
 .XXX: ±0.005
 ANGLES: X°: ±1°
 X'X": ±15'
 MACHINED SURFACES:
 32/

DRAWN FAA	DATE 7/14	 Winchester Interconnect 245 Lynnfield St. Peabody, MA 01960		
APPR.	DATE			
APPR.	DATE	TITLE: 2.4 mm PLUG TO 2.9 mm PLUG		
dcamelio		SIZE B	DWG. NO. 26-924-0000-91	REV B
THIRD ANGLE PROJECTION 		SH 1 OF 1		