

8 7 6 5 4 3 2 1

This document, including the design, configuration and mechanical features revealed herein are the sole, confidential and proprietary property of Winchester Interconnect. Reproduction or use thereof, in whole or part, is prohibited without the prior written consent of Winchester Interconnect.

**MATERIALS:**

- SST 303, PER ASTM A582.
- BERYLLIUM COPPER ASTM B196.
- OXIDE-NORYL (TM). MIL-P-46129.

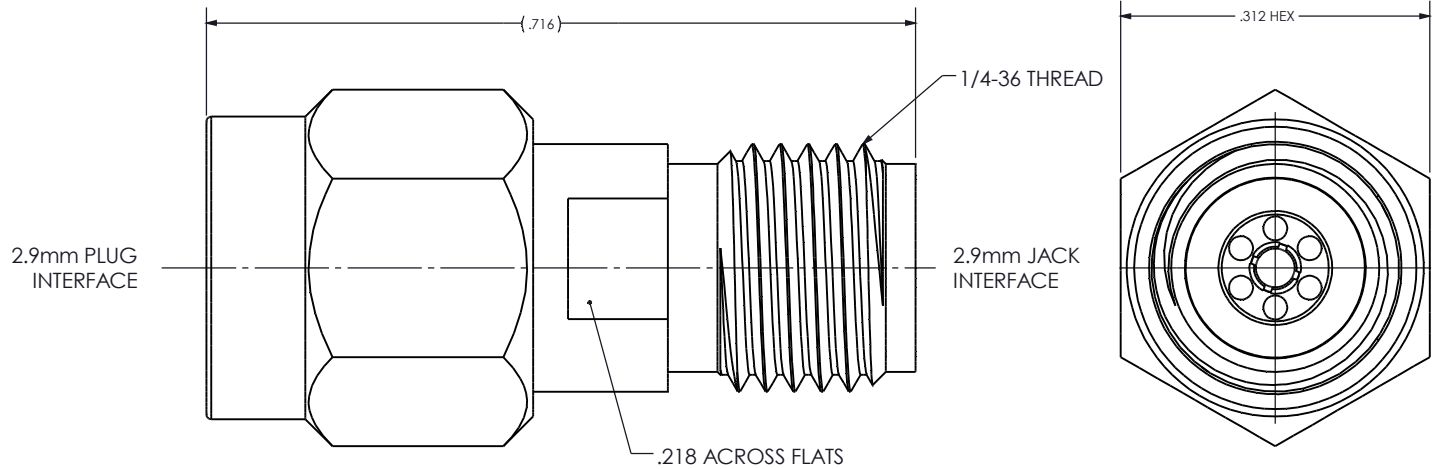
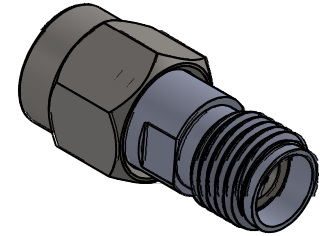
**FINISH:**

- CENTER CONDUCTORS AND SOLDER COMPONENTS SHALL BE GOLD PLATED PER MIL-DTL-45204D TYPE II, CLASS 1 OVER NICKEL PLATE PER QQ-N-290.
- BODY AND BODY COMPONENTS SHALL BE PASSIVATED PER AMS2700.

**PERFORMANCE:**

- FREQUENCY: DC-40GHz
- VSWR: 1.25 MAX.
- INSERTION LOSS: .32 dB
- OPERATING TEMP: -55 °C TO 100 °C
- IMPEDANCE: 50Ohms Nom.

REV	DESCRIPTION	DATE	APPD
-	REL	04/03	LMW
A	ECO-13227	11/24/20	LA



**CUSTOMER OUTLINE DRAWING**

MATERIAL	DO NOT SCALE DRAWING	DRAWN LMW	DATE 04/03	<b>Winchester Interconnect</b> 68 Water St Norwalk, CT 06854
	UNLESS OTHERWISE SPECIFIED: DIMENSIONS ARE IN INCHES	ENG APPR.	DATE	
COMMENTS:	TOLERANCES: FRACTIONS: ±1/64 .XX: ±.01 .XXX: ±.005 ANGLES: ±2°	MFG APPR.	DATE	TITLE: <b>2.9 MM PLUG TO 2.9 MM JACK ADAPTER</b>
		OTHER APPR.	DATE	
surface area: sq inch	weight: lbs	THIRD ANGLE PROJECTION 		SIZE <b>B</b> DWG. NO. <b>24-925-0000-90</b> REV <b>A</b>
		PER ASME Y14.5M-1994		SCALE: 3.65:1 SHEET 1 OF 1

8 7 6 5 4 3 2 1