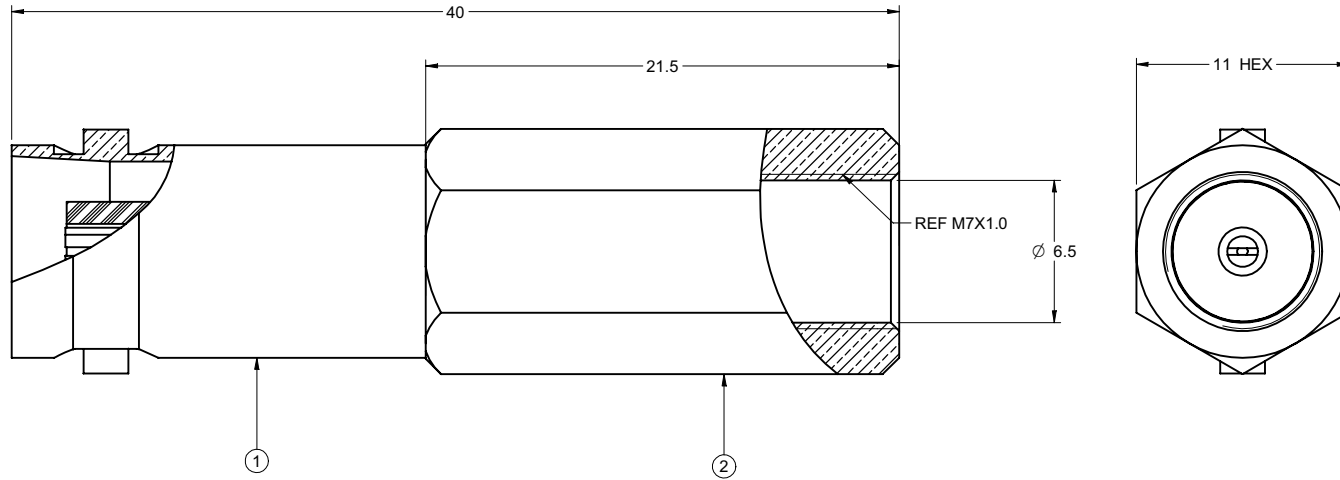


PART NUMBER	ITEM ① BODY	ITEM ② BODY
27-9032	BRASS NICKEL PLATED	HEX SLEEVE NICKEL PLATED

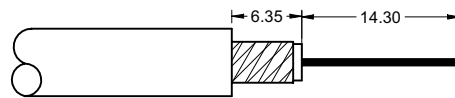
<b>受控 CONTROLLED DOCUMENT</b>					
编号 P/N	27-9032	版本 Rev	0B	日期 Rel'd Date	Mar 24, 08

DRAWING NO. 27-9032					
REVISIONS					
RELEASE FOR QUOTATION					
A	11-30-05	W	W	T	
RELAX CONTACT RESISTANCE					
B	09-14-07	Z	W	T	<i>[Signature]</i>

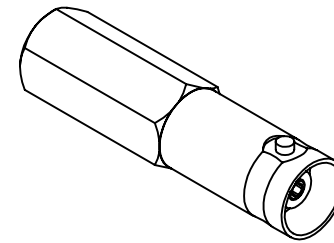


NOTES:

- ELECTRICAL SPECIFICATIONS  
 IMPEDANCE: 50 OHMS NOMINAL  
 FREQUENCY RANGE: 0-4 GHz  
 WORKING VOLTAGE: 500 Vrms MAX AT SEA LEVEL  
 DIELECTRIC WITHSTANDING VOLTAGE: 1500 vrms AT SEA LEVEL  
 CORONA LEVEL: 375 VOLTS MINIMUM AT 70,000 FEET  
 CONTACT RESISTANCE: OUTER - NICKEL PLATED INITIAL 2.5 MILLIOHMS MAXIMUM  
                                   AFTER ENVIRONMENTAL 3.5 MILLIOHMS MAXIMUM  
                                   CENTER - INITIAL 3 MILLIOHMS MAXIMUM  
                                   AFTER ENVIRONMENTAL 4 MILLIOHMS MAXIMUM  
 BRAID TO BODY - 2.5 MILLIOHMS MAXIMUM (NICKEL PLATED),  
                                   AFTER ENVIRONMENTAL NOT APPLICABLE  
 INSULATION RESISTANCE: 5000 MEGOHMS MINIMUM
- MECHANICAL SPECIFICATIONS  
 DURABILITY: 500 CYCLES MIN  
 CABLE ACCEPTABILITY: RG6  
 CABLE RETENTION: 20 lbs MIN
- ENVIRONMENTAL SPECIFICATIONS  
 RECOMMENDED TEMPERATURE RANGE: -55 °C TO +85 °C  
 MOISTURE RESISTANCE: MIL-STD-202
- PRODUCT SHOULD BE RoHS COMPLIANCE.
- PACKAGING REQUIREMENT FOLLOWS ENGINEER DOCUMENT P/N 836-40200001XX



**CABLE STRIP DIMENSIONS**  
ASSEMBLY INSTRUCTIONS ON SHEET 2



THIS DRAWING TO BE INTERPRETED  
PER ANSI Y 14.5M - 1994

**COMPANY CONFIDENTIAL**

TOLERANCE UNLESS OTHERWISE SPECIFIED		DRAWN BY GARY.ZHG	DATE 09-14-07
DECIMALS	mm	CHECKED BY LINDA.WU	DATE 09-14-07
X	± 0.5	APPROVED BY THOMAS	DATE 10-14-07
X.X	± 0.2		
X.XX	± 0.1		
ANGLES	± 0.5°	U/M	mm

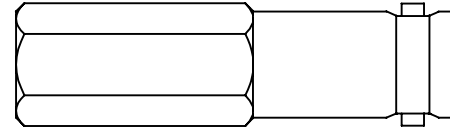
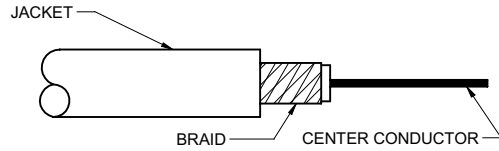
 <b>cinch</b> <small>CONNECTIVITY SOLUTIONS</small> <small>a bel group</small>		
TITLE <b>BNC 1PC FEMALE T-ON RG6</b>		
SHEET 1 OF 2	DRAWING NO. <b>27-9032</b>	SIZE <b>C</b>

THIS DRAWING WAS PRODUCED BY COMPUTER,  
DO NOT SCALE DRAWING OR UPDATE MANUALLY.

PART NUMBER	CABLE	WIRE GAUGE	WIRE DECIMAL	JACKET O.D.
27-9032	RG6	18	1.02	6.86-6.35

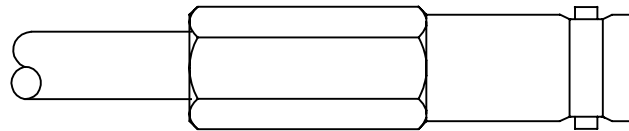
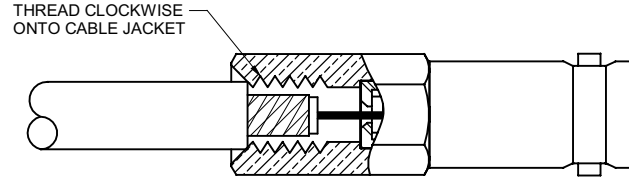
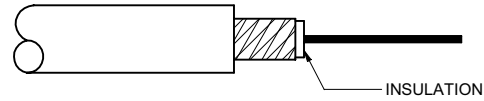
<b>受控 CONTROLLED DOCUMENT</b>					
编号 P/N	27-9032	版本 Rev	0B	日期 Rel'd Date	Mar 24,08

DRAWING NO. 27-9032					
REVISIONS					
RELEASE FOR QUOTATION					
A	11-30-05	W	W	T	
VERSION UPDATE					
B	09-14-07	Z	S	T	



**ASSEMBLY INSTRUCTIONS**

1. IDENTIFY CONNECTOR PARTS. (1 PIECE)
2. TRIM CABLE AS SHOWN. TAKING CARE NOT TO NICK THE CENTER CONDUCTOR OR OUTER BRAID.
3. USE THE FINGERNAIL TO ROTATE THE OUTER BRAIDS CLOCKWISE SUCH THAT 1/32" OF THE INSULATION IS BARED. THEN IN THE SAME DIRECTION RUB THE STRAY BRAIDS FLAT. (STRAY OR LOOSE BRAIDS CAN CAUSE SHORTS.)
4. GENTLY INSERT THE CENTER CONDUCTOR DOWN THE BACK END OF THE CONNECTOR, FEEDING IT INTO THE GUIDE HOLE. (IF THE CENTER CONDUCTOR IS NOT IN PLACE, APPROXIMATELY 1/8" OF THE CENTER CONDUCTOR—THE PART CLOSEST TO THE DIELECTRIC—WILL STILL BE VIEWABLE.)
5. FIRMLY PUSH THE CABLE HOME (A SLIGHT CLOCKWISE TWIST MAY HELP WITH INSERTION). THEN SCREW THE CONNECTOR ON THE CABLE IN A CLOCKWISE DIRECTION UNTIL IT IS SNUGLY ATTACHED TO THE JACKET.



THIS DRAWING TO BE INTERPRETED PER ANSI Y 14.5M - 1994  
**COMPANY CONFIDENTIAL**

TOLERANCE UNLESS OTHERWISE SPECIFIED		DRAWN BY GARY.ZHG	DATE 09-14-07
DECIMALS	mm	CHECKED BY LINDA.WU	DATE 09-14-07
X	± 0.5	APPROVED BY THOMAS	DATE 10-14-07
X.X	± 0.2		
X.XX	± 0.1		
ANGLES	± 0.5°	U/M	mm

TITLE BNC 1PC FEMALE T-ON RG6		
SHEET 2 OF 2	DRAWING NO. 27-9032	SIZE C

THIS DRAWING WAS PRODUCED BY COMPUTER, DO NOT SCALE DRAWING OR UPDATE MANUALLY.