

This document, including the design, configuration and mechanical features revealed herein are the sole, confidential and proprietary property of Winchester Interconnect. Reproduction or use thereof, in whole or part, is prohibited without the prior written consent of Winchester Interconnect.

REV.	DESCRIPTION	DATE	APPROVED
A	ECO-14012	6/23/2021	ASNZ

MATERIALS:

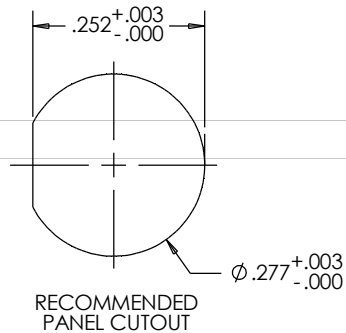
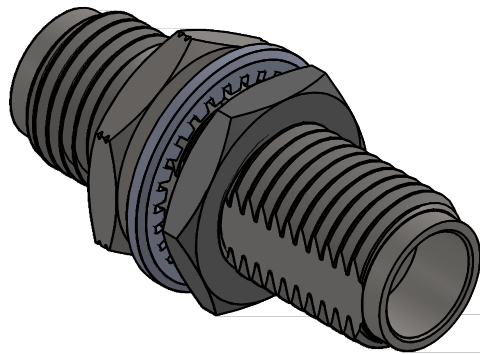
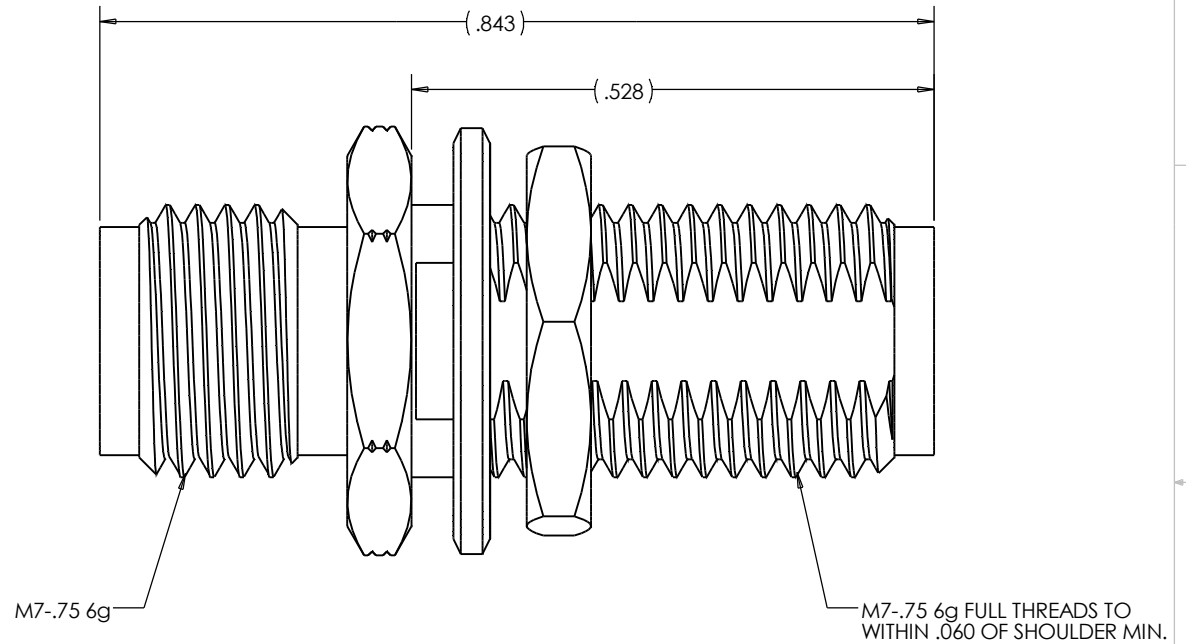
STAINLESS STEEL 303 PER ASTM A582.
 BERYLLIUM COPPER C17300 PER ASTM B196
 OXIDE NORYL PER MIL-P-46129

FINISH:

CENTER CONDUCTOR SHALL BE GOLD PLATED PER MIL-DTL-45204D
 TYPE II, CLASS 1 OVER NICKEL PLATE PER SAE AMS-QQ-N-290
 BODY AND BODY COMPONENTS SHALL BE PASSIVATED PER AMS 2700

ELECTRICALS:


NOMINAL IMPEDANCE: 50 OHMS.
 FREQUENCY RANGE: DC-50 GHz.
 VSWR: 1.3:1 MAX.
 INSERTION LOSS: .05 v F (GHz) dB.



UNLESS OTHERWISE SPECIFIED:
 DIMENSIONS ARE IN INCHES

TOLERANCES:
 .X: ± 0.1
 .XX: ± 0.01
 .XXX: ± 0.005
 ANGLES: $\pm 1.0^\circ$
 MACHINED SURFACES:

63/

DRAWN LMW	DATE 08/03	 Winchester Interconnect.	245 Lynnfield St. Peabody, MA 01960	
APPR.	DATE		TITLE: 2.4 mm JACK TO 2.4 mm JACK BLKHD	
APPR.	DATE	dcamelio		REV A
THIRD ANGLE PROJECTION		SIZE B	DWG. NO. 27-927-2000-40	
		SH 1 OF 1		