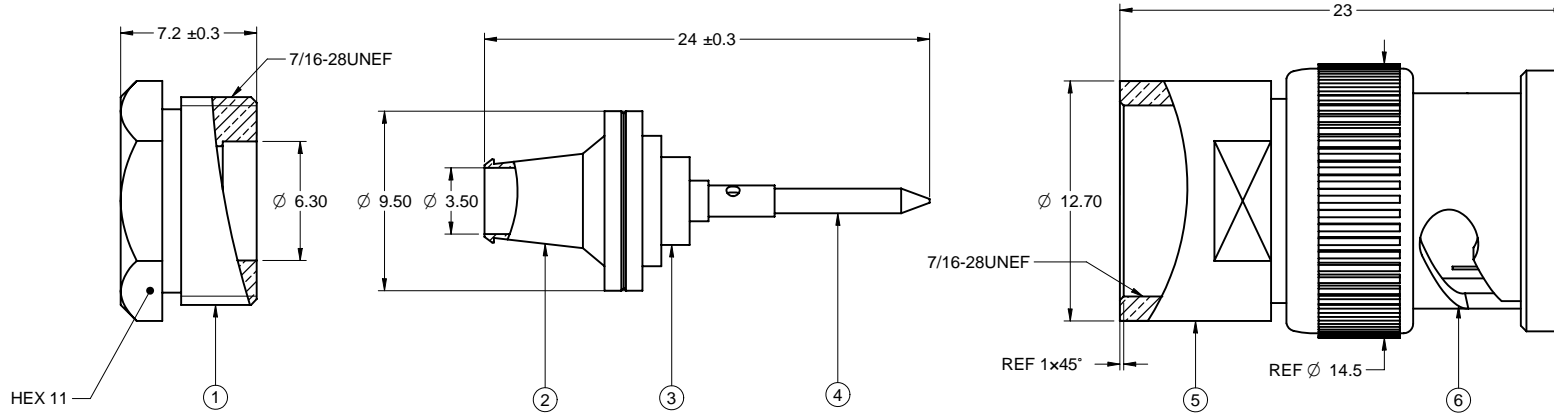


	5			4		3		2		1
PART NUMBER	ITEM ① NUT	ITEM ② TAPER RING	ITEM ③ PLASTIC COVER	ITEM ④ CONTACT	ITEM ⑤ BODY	ITEM ⑥ NUT				
28-90257	BRASS NICKEL PLATED	BRASS SILVER PLATED	PLASTIC NATURE	BRASS GOLD PLATED	BRASS NICKEL PLATED	ZINC NICKEL PLATED				

DRAWING NO.
28-90257

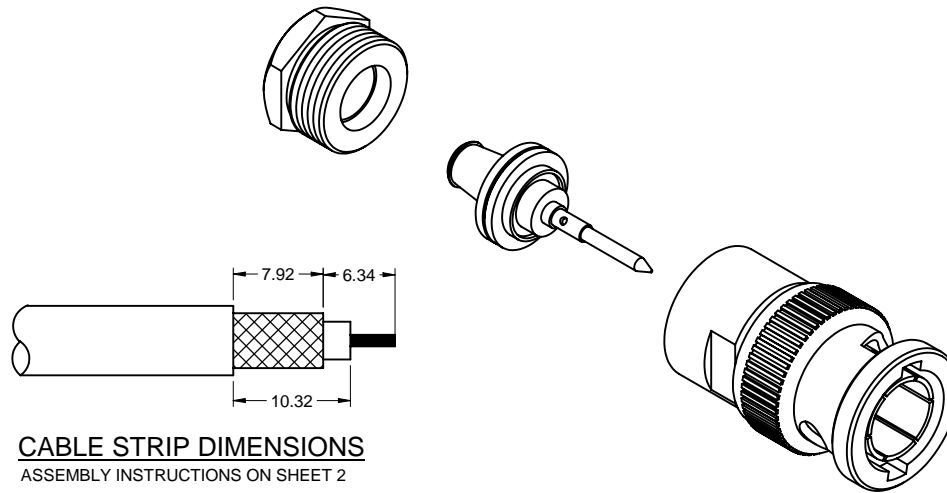
REVISIONS

RELEASE FOR QUOTATION				
A	12-30-05	W	W	T
B ADD DIM. Ø9.5, REF 1x45°, 7/16-28UNEF, REF Ø14.5 ADD TOL. ON DIM. 24 ADD NOTES 4 & 5				
	12-26-06	Z	L	T



NOTES:

- ELECTRICAL CHARACTERISTICS**
 IMPEDANCE: 75 OHM NOMINAL
 FREQUENCY RANGE: 0-4 GHZ
 WORKING VOLTAGE: 500 VOLTS RMS AT SEA LEVEL
 DIELECTRIC WITHSTANDING VOLTAGE: 1500 VOLTS RMS AT SEA LEVEL
 CORONA LEVEL: 375 VOLTS MINIMUM AT 70,000 FEET
 CONTACT RESISTANCE: OUTER - 0.2 MILLIOHMS MAXIMUM
 CENTER - 2.1 MILLIOHMS MAXIMUM
- INSULATION RESISTANCE: 5000 MEGOHMS MINIMUM**
ENVIRONMENTAL CHARACTERISTICS
 RECOMMENDED TEMPERATURE RANGE: -55°C TO +85°C
 MOISTURE RESISTANCE: MIL-STD-202
- MECHANICAL CHARACTERISTICS**
 DURABILITY: 500 CYCLES
 FORCE TO ENGAGE/DISENGAGE: 3 LBS. MAXIMUM
 CABLE RETENTION: 20 LBS., RG-58 C/U CABLE
- PRODUCT SHOULD BE RoHS COMPLIANCE**
- PACKAGING REQUIREMENT FOLLOWS ENGINEERING DOCUMENT P/N 836-40200001XX.**



CABLE STRIP DIMENSIONS
ASSEMBLY INSTRUCTIONS ON SHEET 2

TOLERANCE UNLESS OTHERWISE SPECIFIED		DRAWN BY GARY.ZHG	DATE 12-26-06
DECIMALS	mm	CHECKED BY LINDA.WU	DATE 12-26-06
X	+ 0.5	APPROVED BY THOMAS	DATE 12-26-06
X.X	+ 0.2		
X.XX	+ 0.1		
ANGLES	+ 0.5°	U/M	mm

TITLE 75 OHM BNC 3PC FOR RG59TFE		
SHEET 1 OF 2	DRAWING NO. 28-90257	SIZE C

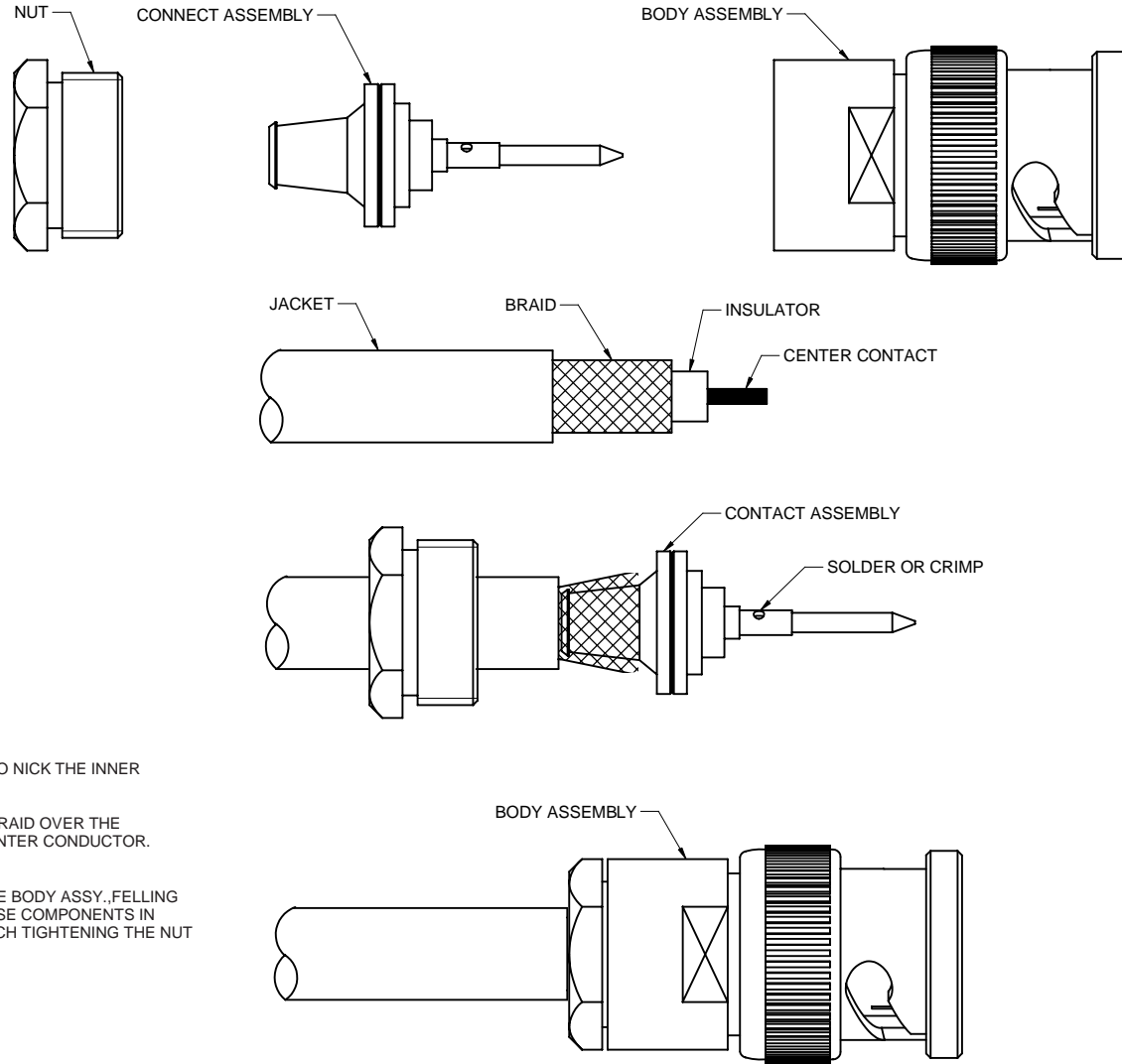
THIS DRAWING WAS PRODUCED BY COMPUTER.
DO NOT SCALE DRAWING OR UPDATE MANUALLY.

THIS DRAWING TO BE INTERPRETED
PER ANSI Y 14.5M - 1994

COMPANY CONFIDENTIAL

PART NUMBER	CABLE	TOOL
28-90257	RG-59&62TFE	24-9958P

DRAWING NO.		28-90257	
REVISIONS			
RELEASE FOR QUTATION			
A	12-30-05	W	W
VERSION UPDATE			
B	12-26-06	Z	L



ASSEMBLY INSTRUCTIONS

1. TRIM CABLE AS SHOWN.TAKING CARE NOT TO NICK THE INNER CONDUCTOR OR BRAID.
2. RUN NUT OVER THE CABLE,AND FLAIR THE BRAID OVER THE FERRULE.SOLDER THE CONTACT TO THE CENTER CONDUCTOR.
3. PUSH THE CENTER CONTACT HOME INTO THE BODY ASSY.,FELLING IT SNAP INTO PLACE,AND WITH ALL THE LOOSE COMPONENTS IN PLACE COMPLETE THE ASSEMBLY BY WRENCH TIGHTENING THE NUT

THIS DRAWING TO BE INTERPRETED PER ANSI Y 14.5M - 1994

COMPANY CONFIDENTIAL

TOLERANCE UNLESS OTHERWISE SPECIFIED		DRAWN BY	DATE
DECIMALS	mm	GARY.ZHG	12-26-06
X	+ 0.5	CHECKED BY	DATE
X.X	+ 0.2	LINDA.WU	12-26-06
X.XX	+ 0.1	APPROVED BY	DATE
ANGLES	+ 0.5°	THOMAS	12-26-06
	U/M	mm	

EMERSON
Network Power

Connectivity Solutions

TITLE
75 OHM BNC 3PC FOR RG59TFE

THIS DRAWING WAS PRODUCED BY COMPUTER, DO NOT SCALE DRAWING OR UPDATE MANUALLY.

SHEET	DRAWING NO.	SIZE
2 OF 2	28-90257	C