

|             |                        |                      |                        |                        |
|-------------|------------------------|----------------------|------------------------|------------------------|
| PART NUMBER | ITEM ①<br>SLEEVE       | ITEM ②<br>CONTACT    | ITEM ③<br>BODY         | ITEM ③<br>NUT          |
| 29-4031     | BRASS<br>NICKEL PLATED | BRASS<br>GOLD PLATED | BRASS<br>NICKEL PLATED | BRASS<br>NICKEL PLATED |

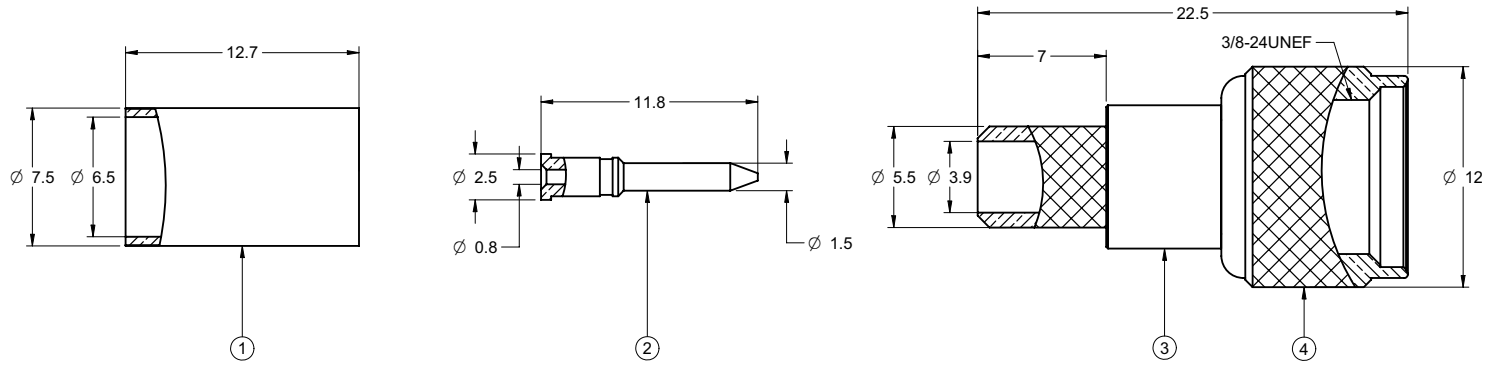
**受控 CONTROLLED DOCUMENT**

|           |         |           |    |                  |            |
|-----------|---------|-----------|----|------------------|------------|
| 编号<br>P/N | 29-4031 | 版本<br>Rev | 0A | 日期<br>Rel'd Date | Mar 24, 08 |
|-----------|---------|-----------|----|------------------|------------|

DRAWING NO.  
**29-4031**

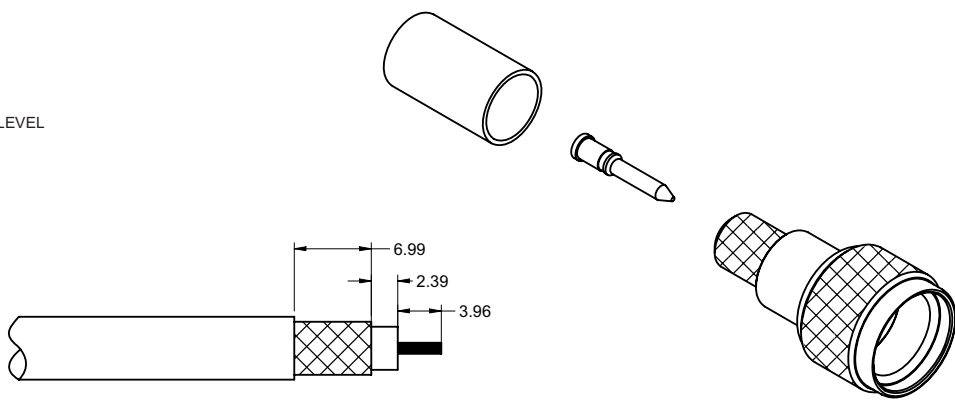
**REVISIONS**

|                       |          |   |   |   |  |
|-----------------------|----------|---|---|---|--|
| RELEASE FOR QUOTATION |          |   |   |   |  |
| A                     | 03-30-06 | W | W | T | Thomas<br>2006.04.22<br>15:31:24 +0800 |



**NOTES:**

- ELECTRICAL CHARACTERISTICS**  
 IMPEDANCE: NON-CONSTANT  
 FREQUENCY RANGE: 0-2 GHZ  
 WORKING VOLTAGE: 500 VOLTS RMS AT SEA LEVEL  
 DIELECTRIC WITHSTANDING VOLTAGE: 1500 VOLTS RMS AT SEA LEVEL  
 INSULATION RESISTANCE: 5000 MEGOHMS MINIMUM
- ENVIRONMENTAL CHARACTERISTICS**  
 RECOMMENDED TEMPERATURE RANGE: -55OC TO +85OC
- MECHANICAL CHARACTERISTICS**  
 DURABILITY: 500 CYCLES  
 CABLE RETENTION: 20 LBS., RG-58 C/U CABLE



**CABLE STRIP DIMENSIONS**  
ASSEMBLY INSTRUCTIONS ON SHEET 2

THIS DRAWING TO BE INTERPRETED  
PER ANSI Y 14.5M - 1994

**COMPANY CONFIDENTIAL**

|                                      |        |                               |                  |
|--------------------------------------|--------|-------------------------------|------------------|
| TOLERANCE UNLESS OTHERWISE SPECIFIED |        | DRAWN BY<br><b>IVON.WANG</b>  | DATE<br>03-30-06 |
| DECIMALS                             | mm     | CHECKED BY<br><b>LINDA.WU</b> | DATE<br>03-30-06 |
| X                                    | ± 0.5  | APPROVED BY<br><b>THOMAS</b>  | DATE<br>03-30-06 |
| X.X                                  | ± 0.2  | U/M                           | mm               |
| X.XX                                 | ± 0.1  |                               |                  |
| ANGLES                               | ± 0.5° |                               |                  |

**EMERSON**  
Network Power

**Connectivity Solutions**

TITLE  
**MINI UHF CRIMP RG 59 & 62 \***

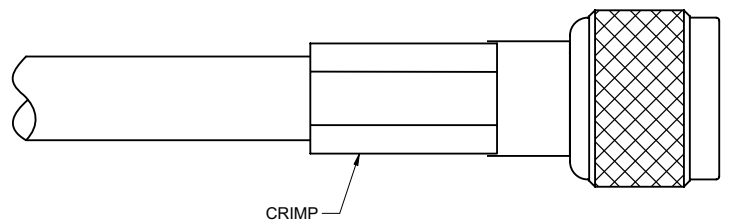
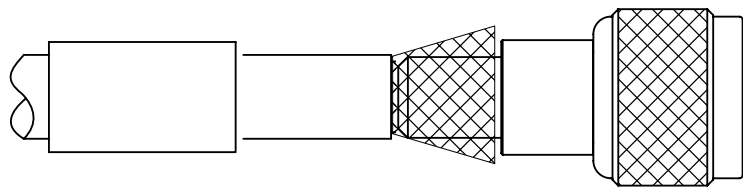
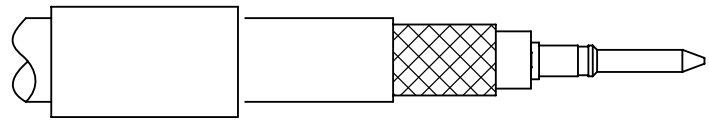
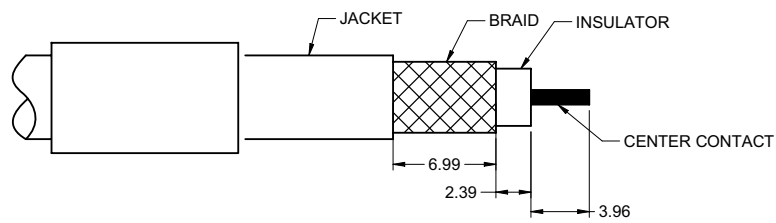
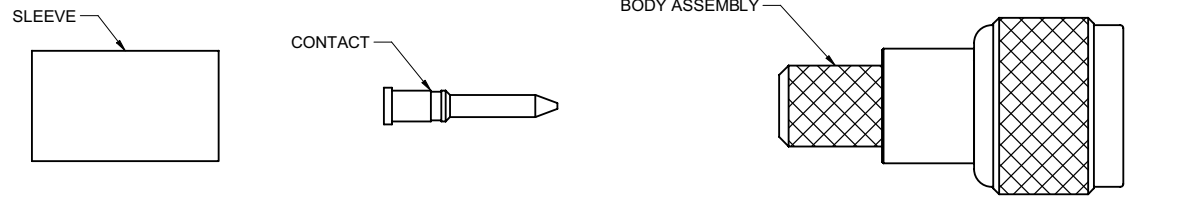
|  |  |                 |                               |                  |
|--|--|-----------------|-------------------------------|------------------|
| THIS DRAWING WAS PRODUCED BY COMPUTER,<br>DO NOT SCALE DRAWING OR UPDATE MANUALLY. |  | SHEET<br>1 OF 2 | DRAWING NO.<br><b>29-4031</b> | SIZE<br><b>C</b> |
|--|--|-----------------|-------------------------------|------------------|

|             |            |             |          |
|-------------|------------|-------------|----------|
| PART NUMBER | CABLE TYPE | BLISTER NO. | AIM TOOL |
| 29-4031     | RG-59&62   | 29-4031P    | 24-9959P |

**受控 CONTROLLED DOCUMENT**

|           |         |           |    |                  |           |
|-----------|---------|-----------|----|------------------|-----------|
| 编号<br>P/N | 29-4031 | 版本<br>Rev | 0A | 日期<br>Rel'd Date | Mar 24,08 |
|-----------|---------|-----------|----|------------------|-----------|

|                        |                |
|------------------------|----------------|
| DRAWING NO.<br>29-4031 |                |
| REVISIONS              |                |
| RELEASE FOR QUATION    |                |
| A                      | 03-30-06 W W T |



**ASSEMBLY INSTRUCTIONS**

1. STRIP CABLE TO DIMENSIONS SHOWN IN TABLE. ALL CUTS ARE TO BE SHARP AND SQUARE. IMPORTANT: DO NOT NICK BRAID, DIELECTRIC, OR CENTER CONDUCTOR.
2. SLIDE OUTER FERRULE ONTO CABLE AS SHOWN. FLARE SLIGHTLY END OF CABLE BRAID AS SHOWN TO FACILITATE INSERTION OF INNER FERRULE. IMPORTANT: DO NOT COMB OUT BRAID. PLACE CONTACT ON CABLE CENTER CONDUCTOR SO IT BUTTS AGAINST CABLE DIELECTRIC. SOLDER CONTACT IN PLACE USING TOOL.
3. INSTALL CABLE ASSEMBLY INTO BODY ASSEMBLY SO INNER FERRULE PORTION SLIDES UNDER BRAID. PUSH CABLE ASSEMBLY FORWARD UNTIL CABLE DIELECTRIC SEATS AGAINST CONNECTOR INSULATOR.
4. SLIDE OUTER FERRULE OVER BRAID AND UP AGAINST CONNECTOR BODY, HOLDING CONNECTOR BODY FIRMLY IN PLACE. CRIMP OUTER FERRULE USING TOOL HANDLE.

THIS DRAWING TO BE INTERPRETED PER ANSI Y 14.5M - 1994

**COMPANY CONFIDENTIAL**

|                                      |        |             |          |
|--------------------------------------|--------|-------------|----------|
| TOLERANCE UNLESS OTHERWISE SPECIFIED |        | DRAWN BY    | DATE     |
|                                      |        | IVON.WANG   | 03-30-06 |
| DECIMALS                             | mm     | CHECKED BY  | DATE     |
| X                                    | ± 0.5  | LINDA.WU    | 03-30-06 |
| X.X                                  | ± 0.2  | APPROVED BY | DATE     |
| X.XX                                 | ± 0.1  | THOMAS      | 03-30-06 |
| ANGLES                               | ± 0.5° | U/M         | mm       |

|                                      |                        |                               |  |
|--------------------------------------|------------------------|-------------------------------|--|
| <b>EMERSON</b><br>Network Power      |                        | <b>Connectivity Solutions</b> |  |
| TITLE<br>MINI UHF CRIMP RG 59 & 62 * |                        |                               |  |
| SHEET<br>2 OF 2                      | DRAWING NO.<br>29-4031 | SIZE<br>C                     |  |

THIS DRAWING WAS PRODUCED BY COMPUTER, DO NOT SCALE DRAWING OR UPDATE MANUALLY.