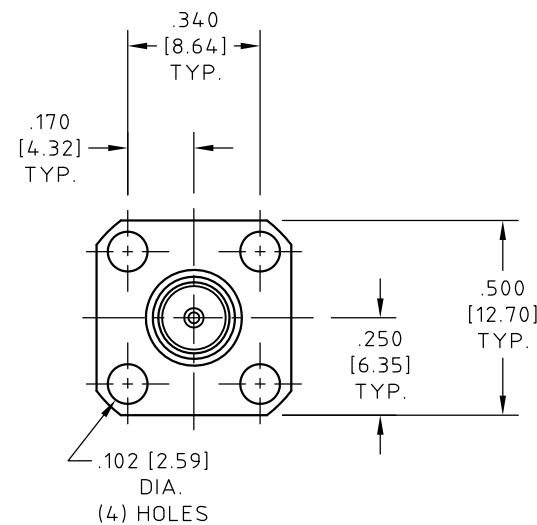
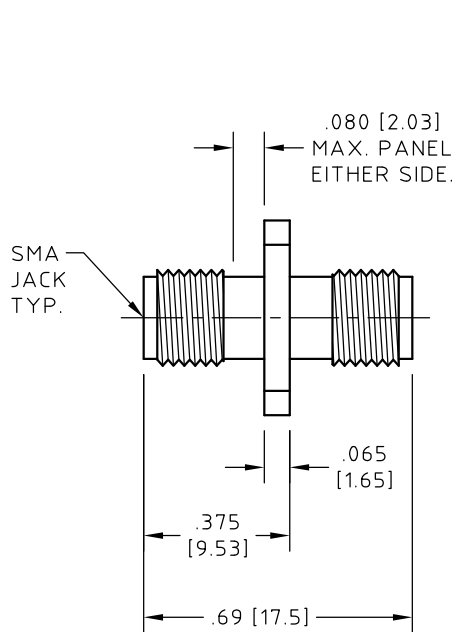


CONTROL DRAWING

29074

J



NOTES:

1. DESCRIPTION,
ADAPTOR, SMA JACK TO SMA JACK, FLANGED.
2. MATERIALS AND FINISHES,
BODY,
STEEL, CORROSION RESISTANT PER ASTM A-582,
UNS No. S30300, COND. A, NON MAGNETIC,
PASSIVATED PER SAE-AMS-2700.
NO DICHROMATE SOLUTIONS USED.
CENTER CONDUCTOR,
BERYLLIUM COPPER ALLOY PER ASTM B-196,
UNS No. C17300, TEMPER TD04(H),
GOLD PLATED 50 μIN (1.27 μM) MIN. THK.
PER ASTM B-488, CODE C, TYPE II, CLASS 1.27
OVER
NICKEL PLATE, 50 μIN (1.27 μM) MIN. THK.
PER SAE-AMS-QQ-N-290, CLASS 1.
DIELECTRIC,
POLYTETRAFLUOROETHYLENE (PTFE) PER ASTM D-1710,
OR ASTM D-4894, TYPE I, GRADE 1, CLASS A.
3. ELECTRICAL CHARACTERISTICS:
IMPEDANCE
50.0 OHMS NOMINAL.
FREQUENCY
18.0 GHZ MAX.
INSERTION LOSS
0.25 DB MAX.
VSWR
1.15 : 1 MAX.
4. INTERFACE MEETS MIL-STD-348.
5. OPERATING TEMPERATURE RANGE
-55° C TO +125° C

UNLESS OTHERWISE SPECIFIED CONCENTRICITY .004 T.I.R. CORNERS AND FILLETS .005 MAX. RADIUS OR CHAMFER. SURFACE FINISH 63 RMS MICROINCHES OR BETTER.	
FRACTIONS	± 1/16
X	± .030
XX	± .015
XXX	± .005
ANGLES	± 1°
DO NOT SCALE DRAWING	

NAME	DATE	 <small>THIS DRAWING CONTAINS PATENTABLE AND PROPRIETARY INFORMATION. THE DESIGN CANNOT BE USED WITHOUT WRITTEN PERMISSION OF HUBER + SUHNER ASTROLAB.</small>
PREP. O. JOHNSON		
ELEC.		
MECH.		
Q.C.		
TITLE		ADAPTOR, SMA JACK TO SMA JACK, FLANGED
THDS. TO BE IN ACCORD WITH U.S. DEPT. OF COMM. SCREW THD. STDS. FOR FEDERAL SERVICES 1950 SUPL. TO HANDBOOK H 28.	SCALE 2:1	CODE IDENT. 16301
		DWG NO. 29074
		REV J

J	COMPANY LOGO UPDATED	07/17/13	EF	
REV.	DESCRIPTION	DATE	BY	APPROVED