

## 2.92 mm TO 40 GHz

### 2.92 mm Cable Assemblies

RF047-A, RF086, RF085, RF23C



#### VSWR

**RF047-A:** 1.35 max.  
**RF086:** 1.40 max.  
**RF085:** 1.40 max.  
**RF23C:** 1.40 max.

SERIES	END 1 CONNECTOR	END 2 CONNECTOR	OVERALL LENGTH
<b>RF047-A</b> = (1.2 mm) .047" overshield DIA 29 AWG millimeter wave cable  <b>RF086</b> = (2.18 mm) .086" overshield DIA 23 AWG millimeter wave cable  <b>RF085</b> = (2.16 mm) .085" overshield DIA 24 AWG millimeter wave cable  <b>RF23C</b> = MWC-2350CU-01 millimeter wave cable with copper foil shield	<b>-92SJ</b> = 2.92 mm Straight Jack  <b>-92SP</b> = 2.92 mm Straight Plug	<b>ALSO AVAILABLE</b>  1.35 mm, 1.85 mm, 2.40 mm, SMPM = RF047-A  1.85 mm, 2.40 mm, SMPM = RF086  2.40 mm = RF085  2.40 mm, SMPM = RF23C	<b>-"XXXX"</b> = Overall Length in millimeters  -0100 (100 mm) 3.94" minimum (RF047-A, RF085, RF086,)  -0152 (0152 mm) 5.984" minimum (RF23C)

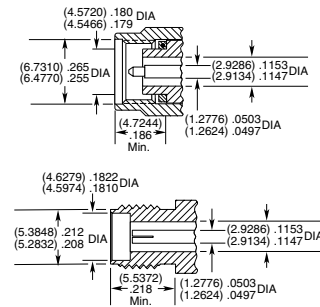
### 2.92 mm Cable Connectors

PRF92



CONNECTORS FOR INDUSTRY STANDARD CABLES	
PRF92-P-C-EE-405-SD	RG 405, .085, semi-rigid
PRF92-P-C-EE-085A-SD	.085, semi-rigid, 23AWG
PRF92-P-C-EP-160-SS	Semflex HP160, low loss flexible
PRF92-P-C-EP-150B-SS	IW 1501, low loss flexible
PRF92-P-C-EP-142-SS	Harbour LL142, low loss flexible
PRF92-J-C-EP-085-SS	Harbour SS405, flexible alternative to RG 405
PRF92-J-C-EP-085-BS	Harbour SS405, flexible alternative to RG 405
PRF92-P-C-EP-085-SS	Harbour SS405, flexible alternative to RG 405
PRF92-P-C-EE-402-SD	RG 402, .141, semi-rigid
PRF92-P-C-EP-190-SS	Semflex HP190, low loss flexible
PRF92-J-C-EP-160-SS	Semflex HP160, low loss flexible
PRF92-P-C-EP-120A-SS	Semflex HP120, low loss flexible
PRF92-P-C-EP-140-SS	Dynawave DF140, low loss flexible
PRF92-P-C-EP-047D-SS	.047, semi-rigid
PRF92-J-C-EP-047D-SS	.047, semi-rigid
PRF92-P-C-EP-150-SS	Dynawave DF150, low loss flexible
PRF92-P-C-EE-118-SD	Haverhill HC35004, .118, semi-rigid
PRF92-J-C-EP-402-SS	RG 402, .141, semi-rigid
PRF92-J-C-EP-047D-4S	.047, semi-rigid
PRF92-J-C-EP-405-4S	RG 405, .085, semi-rigid
PRF92-P-C-EE-405-SD	RG 405, .085, semi-rigid
PRF92-P-C-EP-086-SS	.086 Temp-Flex, low loss flexible
PRF92-P-C-EP-200-SS	Times Max Gain 200, low loss flexible

#### INTERFACE STANDARD



P-C = Cable Plug  
 J-P = Cable Jack  
 EE = Plating (50 μ" Gold center contact & outer contact)  
 EP = Plating (50 μ" Gold center contact, passivated outer contact)  
 SS = Straight, Solder Clamp  
 SD = Straight, Direct Solder  
 BS = Bulkhead, Solder Clamp  
 4S = 4-hole flange, Solder Clamp

### 2.92 mm Board Connectors

**Cable Mates:**  
 RF047-A, RF085, RF086, RF23C



292	GENDER	TYPE	PLATING	ORIENTATION	TERMINATION	OPTION	PACKAGING
	<b>-J</b> = Jack	<b>-P</b> = PCB Mount	<b>-EP</b> = 50 μ" (1.27 μm) Gold center contact, Passivated outer contact	<b>-ST</b> = Straight	<b>-CM</b> = Compression Mount Stripline  <b>-CMM</b> = Compression Mount Microstrip	<b>-1</b> = Without Screws  <b>-2</b> = With Screws	Leave blank for tray packaging  <b>-K</b> = Individually bagged