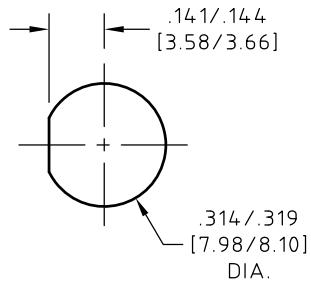


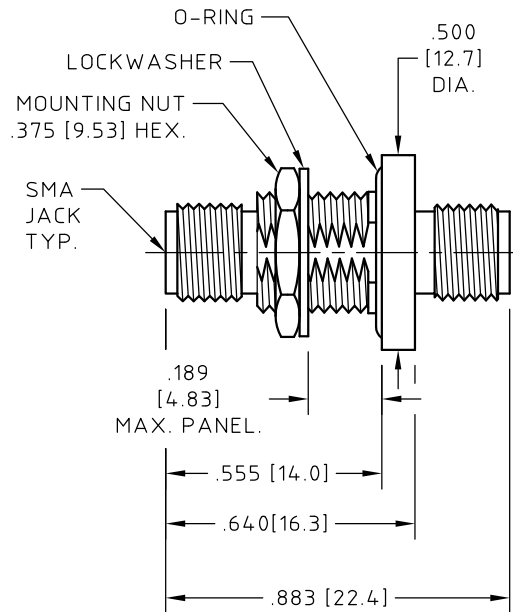
# CONTROL DRAWING

29285G

S



PANEL CUT OUT (PC4)  
TORQUE MOUNTING NUT  
TO 20.0±2.0 IN-LBS.  
[2.26±.23 Nm]



NOT RoHS COMPLIANT

NOTES:

1. MATERIALS AND FINISHES

- BODY AND MOUNTING NUT,  
STEEL, CORROSION RESISTANT PER ASTM A-582,  
UNS No. S30300, COND. A, NON MAGNETIC,  
PASSIVATED PER SAE-AMS-2700 OR ASTM A-967.  
NO DICHROMATE SOLUTIONS USED.
- OR  
NICKEL PLATED .000100 IN MIN. THK. (2.54 MICRO METERS)  
PER SAE-AMS-C-26074 OR ASTM B-733.
- CENTER CONDUCTOR,  
BERYLLIUM COPPER ALLOY PER ASTM B-196,  
UNS No. C17300, TEMPER TD04(H),  
GOLD PLATED .000050 IN MIN. THK. (1.27 MICRO METERS)  
PER ASTM B-488, CODE C, TYPE II,
- OVER  
NICKEL PLATE, .000050 IN MIN. THK. PER SAE-AMS-QQ-N-290,  
OR ASTM B-689 TYPE 1.
- FEEDTHRU BODY AND PIN,  
KOVAR PER ASTM F-15 AND F-1466 (MIL-I-23011 CLASS1) UNS K94610  
GOLD PLATED .000050 IN MIN. THK. (1.27 MICRO METERS)  
PER MIL-C-45204 TYPE III, GRADE A OVER  
NICKEL PLATE, .000100 TO .000200 IN THK. PER MIL-C-26074.
- FEEDTRU DIELECTRIC,  
CORNING No. 7070 GLASS
- DIELECTRIC,  
POLYTETRAFLUOROETHYLENE (PTFE) PER ASTM D-1710,  
OR ASTM D-4894, TYPE I, GRADE 1.
- LOCKWASHER,  
COPPER ALLOY CDA 425, UNS No. C42500 PER ASTM B-591  
OR  
COPPER ALLOY CDA 510, UNS No. C51000 PER ASTM B-103,  
NICKEL PLATED .000100 IN MIN. THK. (2.54 MICRO METERS)  
PER SAE-AMS-C-26074 OR ASTM B-733.
- O-RING,  
SILICONE RUBBER PER GSA CID A-A-59588-2B  
AND SAE-AMS-3304.

NOTES CONTINUED:

- 2. ELECTRICAL CHARACTERISTICS:  
IMPEDANCE  
50.0 Ohms NOMINAL.  
FREQUENCY  
22.0 GHz MAX.  
INSERTION LOSS  
0.55 dB MAX.  
VSWR  
1.30 : 1 MAX. AT 10.0 GHz.  
1.45 : 1 MAX. AT 22.0 GHz.
- 3. INTERFACE MEETS MIL-STD-348.

NOTES CONTINUED:

- 4. OPERATING TEMPERATURE RANGE  
-55° C TO +125° C.
- 5. HERMETIC SEAL:  
100% OF CONNECTORS ARE TESTED  
PER ASTROLAB PS11606 AND  
QUALIFIED FOR LEAKAGE RATES  
LESS THAN 1 X 10E-8 CCM/SEC.  
OF HELIUM UNDER PRESSURE  
DIFFERENTIAL OF 15.00 PSIG, IAW  
ASTM E-498, AND MIL-STD-202  
AND MIL-STD-883.

UNLESS OTHERWISE SPECIFIED  
CONCENTRICITY .004 T.I.R.  
CORNERS AND FILLETS .005  
MAX. RADIUS OR CHAMFER.  
SURFACE FINISH 63 RMS  
MICROINCHES OR BETTER.

FRACTIONS	± 1/16
X	± .030
XX	± .015
XXX	± .005
ANGLES	± 1°
DO NOT SCALE DRAWING	

NAME	DATE	<p>THIS DRAWING CONTAINS PATENTABLE AND PROPRIETARY INFORMATION. THE DESIGN CANNOT BE USED WITHOUT WRITTEN PERMISSION OF HUBER + SUHNER ASTROLAB.</p>
PREP.		
ELEC.		
MECH.		
Q.C.		

TITLE	ADAPTOR, SMA JACK TO SMA JACK, BULKHEAD, HERMETIC		
THDS. TO BE IN ACCORD WITH U.S. DEPT. OF COMM. SCREW THD. STDs. FOR FEDERAL SERVICES 1950 SUPL. TO HANDBOOK H 28.	SCALE	CODE IDENT.	DWG NO.
	2:1	16301	29285G
REV.	DESCRIPTION		DATE
S	"RoHS" UPDATED		01/30/18
BY	APPROVED		
EF			

REV.	DESCRIPTION	DATE	BY	APPROVED
S	"RoHS" UPDATED	01/30/18	EF	