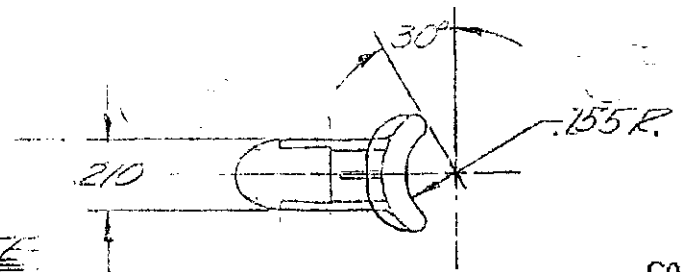
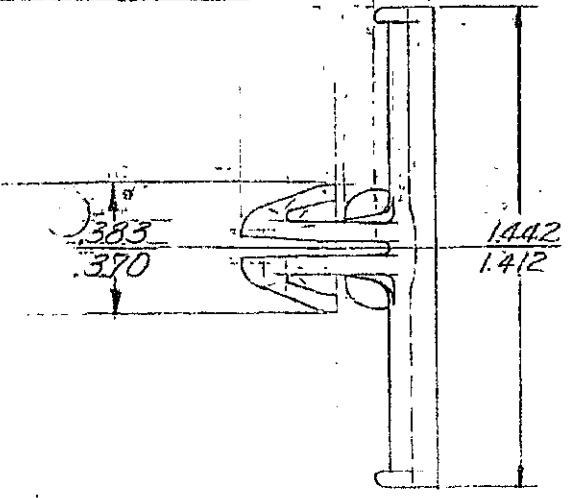


PACKARD ELECTRIC DIVISION  
 GENERAL MOTORS CORPORATION  
 WARREN, OHIO

DO NOT SCALE

THIS DRAWING AND DESIGN HEREON CONSTITUTES A PROPRIETARY DESIGN OF PACKARD ELECTRIC DIVISION AND IS NOT TO BE DUPLICATED OR REPRODUCED WITHOUT AUTHORITY OF PACKARD ELECTRIC DIVISION.



NOTE

1. CLIP TO SNAP INTO .230/.270 DIA. HOLES IN .035/.090 THICK STOCK.
2. ENVIRONMENTAL PROTECTION ACCORDING TO OPEL SPECIFICATION QU000 001. CADMIUM.
3. MATERIAL RECYCLING CODE PER ISO 11469. (2.3) X (0.1) RAISED CHARACTERS AS SHOWN TO BE LOCATED ON ANY EXTERIOR SURFACE. OPTIONAL CONSTRUCTION TO BE NO MATERIAL RECYCLING CODE.
4. (2.3) X (0.1) RAISED DELPHI CORPORATE BRAND TO BE LOCATED ON ANY EXTERIOR SURFACE, PREFERABLY VISIBLE AT FINAL ASSEMBLY. OPTIONAL CONSTRUCTION TO BE "PED" OR NO LOGO.

C02D1479

OUTLINE DWG.

PART NO. <b>2962752</b>		SIZE <b>A</b>
DATE	BYM	REVISION RECORD
128-65	GI	REDRAWN
	G	MATE SPEC WAS
		NYLON (NAT)
09MY84	-	ADDED NOTE #2
060C99	ZZ	REVISED MAT'L SPEC
19SE05	22	MAT'L SPEC WAS R0071753 AND
		ADDED NOTES #3 & #4
CODE NO. 6900		TOLERANCE UNLESS OTHERWISE SPECIFIED
		DECIMAL ± .005
		FRACTIONAL
		ANGULAR ± 2°
DWG. DATE 9-28-60	SCALE 2:1	DR. K. COPE
ROUTING		OK <i>Parish 9-29</i>
DEPT.		APPR
OUTST.		APPR
REFERENCE	2962752 "C" SIZE	APPR <i>5 Tom 10-3</i>
MATERIAL SPEC M3592024 PA66 HS IM CRM		CODE NO.
NAME HARNESS CLIP		
PART NO. <b>2962752</b>		SIZE <b>A</b>