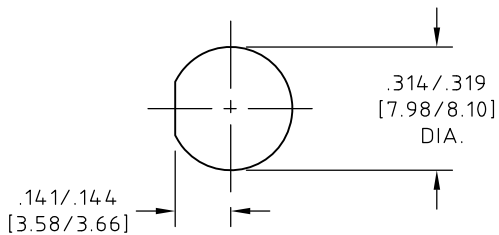


CONTROL DRAWING

29085

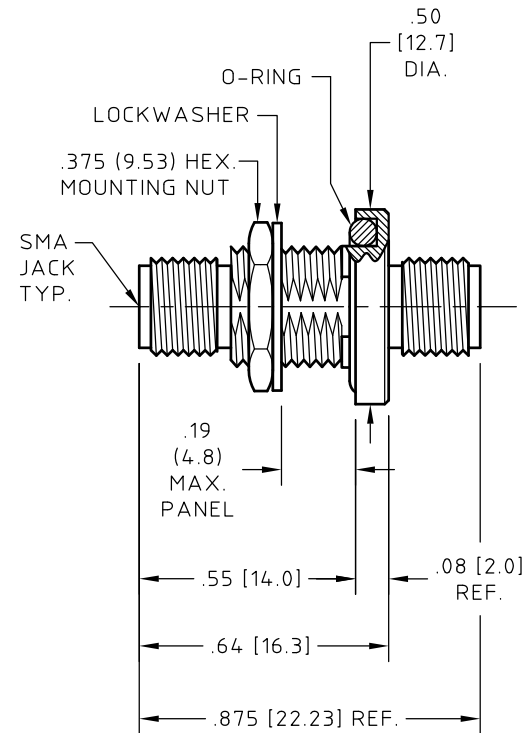
Q



PANEL CUT OUT
 HUBER+SUHNER Astrolab
 REFERENCE "PC4"
 TORQUE MOUNTING NUT
 TO 20±2 IN-LBS [2.96±.3 Nm]

NOTES:

- DESCRIPTION,
ADAPTOR, SMA JACK TO SMA JACK, BULKHEAD.
- MATERIALS AND FINISHES
 BODY AND MOUNTING NUT,
 STEEL, CORROSION RESISTANT PER ASTM A-582,
 UNS No. S30300, COND. A, NON MAGNETIC,
 PASSIVATED PER SAE-AMS-2700.
 NO DICHROMATE SOLUTIONS USED.
 CENTER CONDUCTOR,
 BERYLLIUM COPPER ALLOY PER ASTM B-196,
 UNS No. C17300, TEMPER TD04(H),
 GOLD PLATED 50 µIN (1.27 µM) MIN. THK.
 PER ASTM B-488, CODE C, TYPE II, CLASS 1.27
 OVER
 NICKEL PLATE, 50 µIN (1.27 µM) MIN. THK.
 PER SAE-AMS-QQ-N-290, CLASS 1.
 DIELECTRIC,
 POLYTETRAFLUOROETHYLENE (PTFE) PER ASTM D-1710,
 OR ASTM D-4894, TYPE I, GRADE 1, CLASS A.
 LOCKWASHER,
 COPPER ALLOY UNS No. C425xxSERIES PER ASTM B-591 OR
 COPPER ALLOY UNS No. C51xxx SERIES PER ASTM B-103,
 NICKEL PLATED 100 µIN MIN. THK. (2.54 µM)
 PER SAE-AMS-C-26074 OR ASTM B-733.
 O-RING,
 SILICONE RUBBER PER GSA CID A-A-59588-2B
 AND SAE-AMS-3304.
- ELECTRICAL CHARACTERISTICS:
 IMPEDANCE
 50.0 Ohms NOMINAL.
 FREQUENCY
 18.0 GHz MAX.
 INSERTION LOSS
 0.25 dB MAX.
 VSWR
 1.15 : 1 MAX.
- INTERFACE MEETS MIL-STD-348.
- OPERATING TEMPERATURE RANGE
 -55° C TO +125° C.



UNLESS OTHERWISE SPECIFIED
 CONCENTRICITY .004 T.I.R.
 CORNERS AND FILLETS .005
 MAX. RADIUS OR CHAMFER.
 SURFACE FINISH 63 RMS
 MICROINCHES OR BETTER.

FRACTIONS	± 1/16
X	± .030
XX	± .015
XXX	± .005
ANGLES	± 1°
DO NOT SCALE DRAWING	

NAME	DATE	<p>THIS DRAWING CONTAINS PATENTABLE AND PROPRIETARY INFORMATION. THE DESIGN CANNOT BE USED WITHOUT WRITTEN PERMISSION OF HUBER + SUHNER ASTROLAB.</p>
PREP.		
ELEC.		
MECH.		
Q.C.		

TITLE	ADAPTOR, SMA JACK TO SMA JACK, BULKHEAD.		
THDS. TO BE IN ACCORD WITH U.S. DEPT. OF COMM. SCREW THD. STDS. FOR FEDERAL SERVICES 1950 SUPL. TO HANDBOOK H 28.	SCALE	CODE IDENT.	DWG NO.
	2:1	16301	29085
REV.	DESCRIPTION		DATE
Q	ECN No. 15759		08/21/13
	BY	APPROVED	
	EF		