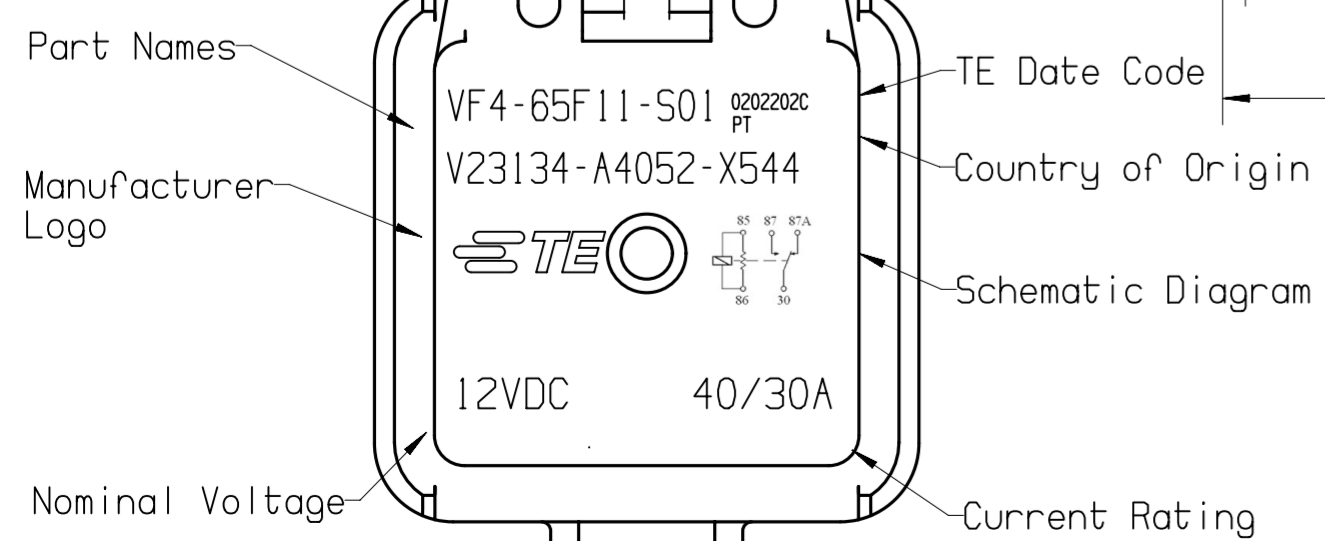
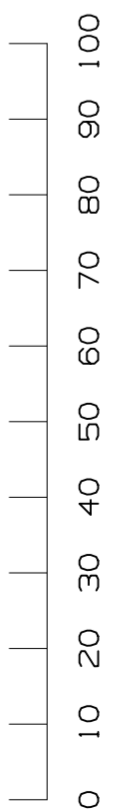


* TERMINAL LOCATIONS APPLY AT THE BASE OF THE TERMINAL

MARKING LASER MARKED OR INK PRINTED OR INJECTION MOLDED TO INCLUDE:
 MANUFACTURER'S NAME, MANUFACTURER'S PART NUMBER,
 SCHEMATIC, COIL VOLTAGE, CONTACT RATING, COUNTRY OF
 ORIGIN AND DATE CODE



TE P/N	PART NAME
3-1904131-5	V23134-A4052-X544



PROPRIETARY THE REPRODUCTION, TRANSMISSION OR USE OF THIS DOCUMENT OR IT'S CONTENTS IS NOT PERMITTED WITHOUT EXPRESSED WRITTEN AUTHORITY. OFFENDERS WILL BE LIABLE FOR ALL DAMAGES. ALL RIGHTS, INCLUDING RIGHTS CREATED BY REGISTERED PATENT(S) GRANTED FOR A UTILITY MODEL OR DESIGN, ARE RESERVED.				CHANGES TO THIS DRAWING MUST BE DONE ONLY IN CAD	PAPER SIZE A2
APPLICABLE SPEC.:				FINISH	
Replacement for VF4-65F11-S01		TOLERANCE UNLESS SPECIFIED OTHERWISE DIMENSIONS IN MM	DIMENSIONS APPLY SCALE 2:1	PLATING WEIGHT	
MATERIAL				PART NAME POWER F RELAY CHANGE OVER	
DWN. 11NOV2016 L.Sandoval APP. REV.		DATE NAME 11NOV2016 L.Sandoval PE EVORA		DWG NO. C - V23134-A4052-X544	
B ECO-19-010387 06FEB2019 L.Sand A1 Initial Release 30NOV2016 L.Sand A --- 11NOV2016 L.Sand		LOCATION		SHT. 1 OF 1	
REV. CHANGE ORDER DATE APP.				CUSTOMER DRAWING	

