

**UL Listed:** For use with the PFC-4410RC Series  
**Dimensions:** 3 1/4" X 3 1/4" X 4"  
**Weight:** .315 lb.  
**Assembly:** Socketed relay in plastic mounting track  
**Power Requirements:** 40mA at 24VDC  
**Contact Ratings:**  
 Each relay has 4PDT contacts,  
 Rated at 10 amps resistive,  
 120/240VAC, 0-30VDC

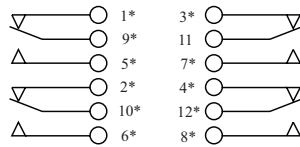
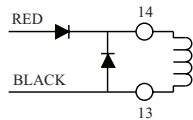
**Stock number:** 3004726

When the ARM-1 is used the additional power required for this relay module must be subtracted from the total circuit current available. The ARM-1 Auxiliary Relay Module is a non-supervised 4PDT Relay

designed to be activated by 24VDC Indicating and/or Releasing, polarity reversing circuits. The module can be used for fan shutdown, door release, elevator recall, etc.

**Wiring**

18" WIRE LEADS  
FURNISHED FOR  
RELAY COIL

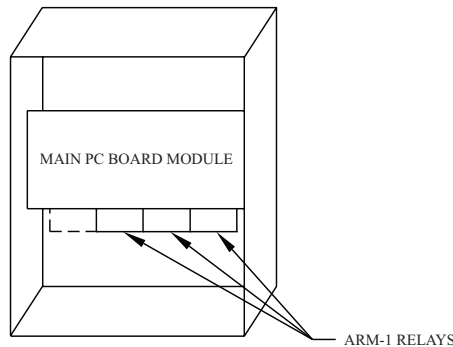


\* NUMBERS REFER TO  
SOCKET TERMINALS  
NOT RELAY PINS.

RELAY SHOWN DE-ENERGIZED

DWG# 1134-1

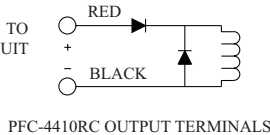
**Placement In PFC-4410RC Series Control Unit**



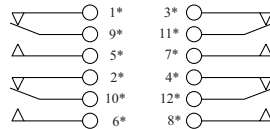
**ARM-1/PFC-4410RC Installation Hook-Up Diagram**

All relays shown in non-activated condition

CONNECT ARM-1 TO  
OUTPUT CIRCUIT



DWG# 1134-2



**Notes:**

- \* Numbers refer to socket terminals not relay pins.
- Auxiliary relay operation is determined by programming of the PFC-4410RC panel. Consult the appropriate manual for further information.