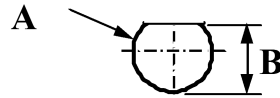
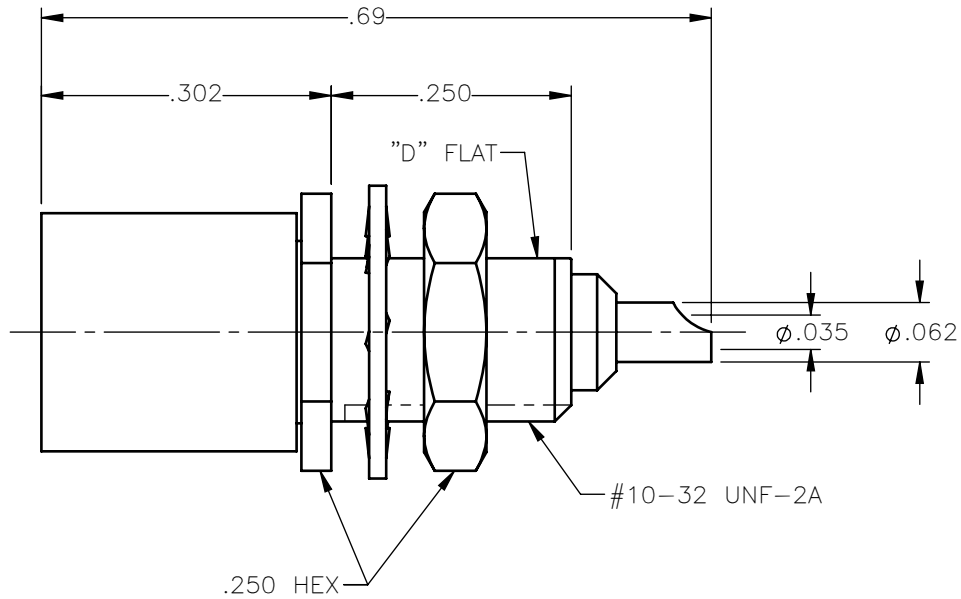


PANEL CUT OUT



| inches | | |
|----------|-------------|-------------|
| | Maxi | mini |
| A | .198 | .192 |
| B | .183 | .177 |

| REVISIONS | | | |
|-----------|-----------------|----------|----------|
| REV. | DESCRIPTION | DATE | APPROVED |
| A | INITIAL RELEASE | 03/07/18 | C.E. |





NOTES:

MATERIALS:

- BODY & NUT = BRASS PER ASTM B16, ALLOY C36000, TEMPER H02.
- INSULATOR = VIRGIN WHITE TEFLON PER ASTM D1710, GRADE 1, TYPE I, CLASS "B".
- CONTACT & SPRING = BERYLLIUM COPPER PER ASTM B196, ALLOY C17300, TEMPER TD04.
- LOCKWASHER = PHOSPHOR BRONZE PER ASTM B139, COPPER ALLOY C53400, TEMPER H04.
- SLEEVE = BRASS PER C36000, ANNEALING 1H AT 500°C, HARDNESS 80-120 HV.

FINISHES:

- CONTACT = GOLD PLATE PER ASTM B488-11, TYPE II, 50µin MIN, GRADE C, OVER 100 TO 200µin STRESS FREE SULFAMATE NICKEL PER AMS-QQ-N-290.
- SPRING = NICKEL PLATE PER AMS-QQ-N-290, CLASS 1, GRADE G, EXCEPT 100 TO 200µin THICK OVER 50 TO 100µin THICK COPPER PER AMS 2418.
- ALL OTHER METAL PARTS = GOLD PLATE PER ASTM B488-11, TYPE II, 30µin MIN, GRADE C OVER 100 TO 200µin COPPER STRIKE PER AMS 2418.

| | | | | |
|---|-----------------------|-------------------------|---|--|
| UNLESS OTHERWISE SPECIFIED DIMENSIONS ARE IN INCHES TOLERANCES ON | DWN: C.E. | DATE: 03/07/18 |  Property of Radiall This document cannot be reproduced or communicated to a third party without prior written permission of RADIALL. |  |
| | CHKD: D.N. | DATE: 03/07/18 | | |
| DECIMAL | ANGLE | APVD: J.M. | DATE: 03/07/18 | SLB STRAIGHT FEMALE PLUG BULKHEAD FRONT MOUNT SOLDER POT RECEPTACLE |
| REFERENCE: | MATERIALS & FINISHES: | SIZE: A | FSCM NO.: 19505 | |
| ORIGINATED: C.E. DATE: 03/07/18 | SEE NOTES | DWG. NO.: 3017-1511-000 | REV: A | |
| | | SCALE: 5:1 | THIRD ANGLE PROJECTION | SHEET 1 OF 1 |

3017-1511-000