

SilverLine®-LPA

DIN, Mini-DIN & Type N for PIM Sensitive Systems

Low PIM Adapters ISO 9001 Certified

- Cellular or Wireless
- Tower or in-building
- Production or laboratory



3191-331



3191-332



3191-376



3191-377



3191-378



3191-379



3191-380



3191-381



SilverLine®-LPA low PIM adapters exhibit exceptional PIM performance in any cellular or wireless frequency range.

Times uses only the most robust designs for long product life regardless of the environment. All product is 100% tested and individually packaged prior to shipping.

3191-394



3191-395



3191-396

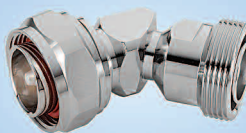


3191-397

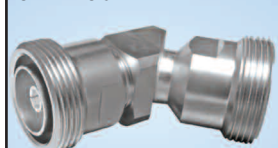


Two 45° Configurations!

3191-382



3191-387



SilverLine®-LPA

Mechanical Specifications			
Body and Coupling Nut	Tri-metal plated brass		
Center Contact	Gold or Silver Plated		
Mating Life	500 min*		
Temperature Range	-40° C to +85° C		
Electrical Specifications			
Frequency, Max	All straight configurations	45° or right angle	
	6 Ghz	3Ghz	
Impedance	50 Ohms		
VSWR, Max	All straight configurations	45° or right angle	
	1.1:1 (3 Ghz) 1.2:1 (6 Ghz)	1.25:1	
PIM* (IM3)	-125 dBm +/- 3 dBm (2 x 43 dBm carriers)		
Insertion Loss, Max (dB)	DIN-N or N-N	DIN-DIN	45° or right angle
	3 Ghz	0.10	0.10
	6 Ghz	0.12	N/A

* Interfaces must be clean and proper torque forces applied

Ordering Information

Individual Adapters:

3191-331 = 7-16 female bullet
 3191-332 = 7-16 male/female right angle
 3191-376 = 7-16 male bullet
 3191-377 = 7-16 male/female
 3191-378 = 7-16 male/Type N male
 3191-379 = 7-16 male/Type N female
 3191-380 = 7-16 female/Type N female
 3191-381 = 7-16 female/Type N male
 3191-382 = 7-16 male/female 45°
 3191-387 = 7-16 female/female 45°
 3191-394 = 4.1/9.5 male/7-16 female
 3191-395 = 4.1/9.5 female/7-16 female
 3191-396 = Type N male/Type N male
 3191-397 = Type N female/Type N female

Kit Designator

A
B
C
D
E
F
G
H
I
J
K
L
M
N

Kit Designator

3191-411 = 4.1/9.5 female/Type N female O
 3191-412 = 4.1/9.5 female/Type N male P
 3191-413 = 4.1/9.5 male/Type N female Q
 3191-414 = 4.1/9.5 male/Type N male R
 3191-415 = 4.3/10 female/7-16 female S
 3191-416 = 4.3/10 male/7-16 female T
 3191-417 = 4.3/10 female/Type N male U
 3191-418 = 4.3/10 male/Type N male V
 3191-419 = 4.1/9.5 female/7-16 male W
 3191-420 = 4.1/9.5 male/7-16 male X
 3191-421 = 4.3/10 female/7-16 male Y
 3191-422 = 4.3/10 male/Type N female Z

Standard (small) SilverLine Adapter Kits: (Hard case with foam insert containing seven adapters)

660-0234: Contains one each A, D, E, F, G, H and I
 660-0235: Contains one each A, D, G, H, I, K and L
 660-0236: Contains one each A, C, M, T, W, Y and Z

Specifications subject to change without notice

Custom (Large) SilverLine Adapter Kits: (Hard case with foam. 10 pieces min, 20 max (max of four 45's or r/a's combined))

SLK-XXXXX . . . (Insert designator from above in alphabetical order (20 max) . Duplicate designators acceptable)



World Headquarters: 358 Hall Avenue, Wallingford, CT 06492 • Tel: 203-949-8400, 1-800-867-2629 Fax: 203-949-8423

International Sales: +1 203.949.8503 • +800.867.2629

China Sales: TMC Building 4, No. 318 Yuanshan Road, Xinzhuang Industrial Park, Shanghai, China 201108 Tel: 86-21-5176-1209 Fax: 86-21-64424098
www.timesmicrowave.com

© 2013, Times Microwave Systems, Wallingford, CT 06492

SL-LPA 02/15