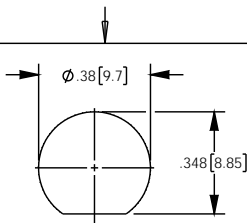
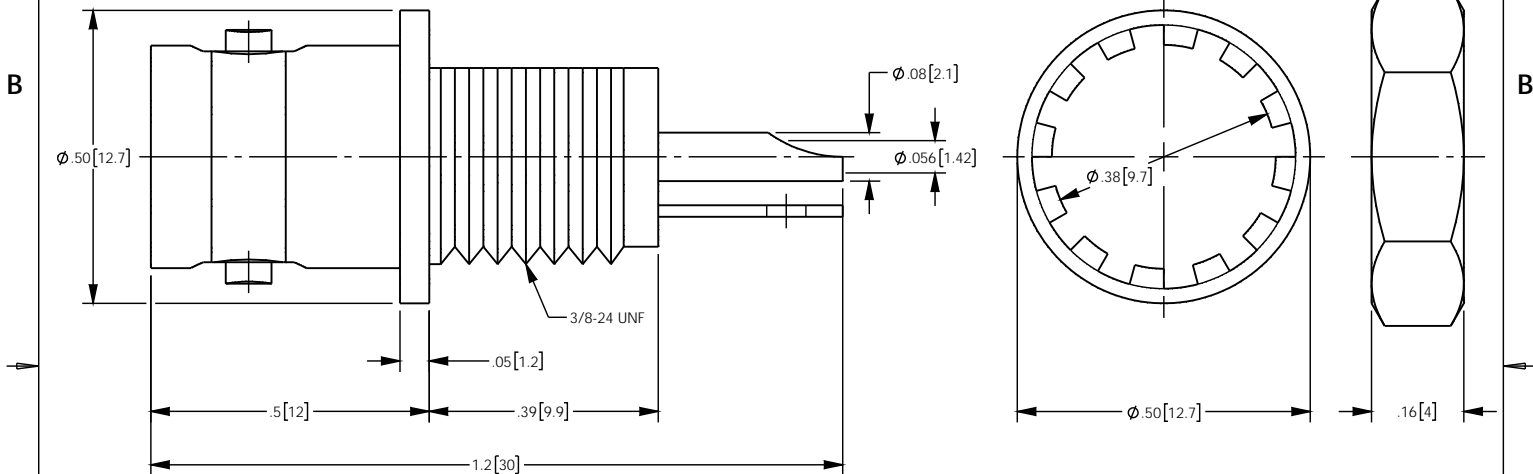


This document, including the design, configuration and mechanical features revealed herein are the sole, confidential and proprietary property of Winchester Interconnect. Reproduction or use thereof, in whole or part, is prohibited without the prior written consent of Winchester Interconnect.

RECOMMENDED MOUNTING HOLE



REV	DESCRIPTION	DATE	APPROVED
C	ER073243	09/05/18	DCAM



NOTES: UNLESS OTHERWISE SPECIFIED

- MATERIAL SPECIFICATIONS:  
CONTACT: PHOSPHOR BRONZE  
INSULATOR: NYLON  
LOCK WASHER: S50C  
ALL OTHER METAL PARTS: BRASS

- FINISH SPECIFICATIONS:  
CONTACT: GOLD  
BRAID GROUNDING: BRIGHT TIN  
ALL OTHER METAL PARTS: NICKEL

- ELECTRICAL SPECIFICATIONS:  
IMPEDANCE: 50 OHMS  
FREQUENCY RANGE: DC - 3.0 GHz

- LOCK WASHER AND HEX NUT SHIPPED LOOSE.

- MAX PANEL THICKNESS = .126 [3.2].

- A MAXIMUM TORQUE OF 12 IN-LB MAY BE APPLIED ON THE HEX NUT WHEN MOUNTING THE CONNECTOR IN THE PANEL.

UNLESS OTHERWISE SPECIFIED:  
DIMENSIONS ARE IN INCHES [MM]

TOLERANCES:  
.X[X]: ±0.1[3]  
.XX[X.X]: ±0.01[0.3]  
XXX[X.XX]: ±0.005[0.13]  
ANGLES: ±2.0°

CATALOG P/N: 326R515



DRAWN	DATE
JL	09/05/2018
APPR	DATE
DCAM	09/05/18
APPR	DATE
XXX	XX/XX/XX
APPR	DATE
XXX	XX/XX/XX
THIRD ANGLE PROJECTION	



245 Lynnfield St  
Peabody, MA 01960

TITLE:  
BNC BULKHEAD  
RECEPT. ISOLATED JACK  
(RoHS)

SIZE A	DWG. NO. SD326R515	REV C
SH 1 OF 1		

09/05/18

2

1