

# HV RCS 800 & 890 DIRECT MATE

RCS 890  
Direct Mate  
2 Way



RCS 800  
Direct Mate  
2 Way

## BENEFITS

- Cost effective solution with unshielded terminal holder within device replacing traditional shielded headers
- Unique and safe mating screwing with innovative Screw Position Assurance (SPA)
- Multiple configurations: RCS 800 (1W straight unshielded); RCS 800 (2W straight shielded); RCS 890 (2W right angle shielded)

## FEATURES

- Robust bolt driven mate assist
- Fingersafe via plastic tips on male pins
- Cable range: ~ 50 mm<sup>2</sup> and smaller



## AVAILABLE CONFIGURATIONS

|                                |                                  |
|--------------------------------|----------------------------------|
| Connector Type                 | Wire-to-device                   |
| Cable Exit Orientation         | 90°, 180°                        |
| Cable Range (mm <sup>2</sup> ) | 35 - 50                          |
| Terminal Type                  | Round 8 mm                       |
| # of Power Terminals           | 2                                |
| Shielding                      | Individual                       |
| HVIL                           | Shunt on female                  |
| Assembly Assurance             | SPA (Screwed Position Assurance) |
| Number of Indexes              | 2 on 890<br>1 on 800             |



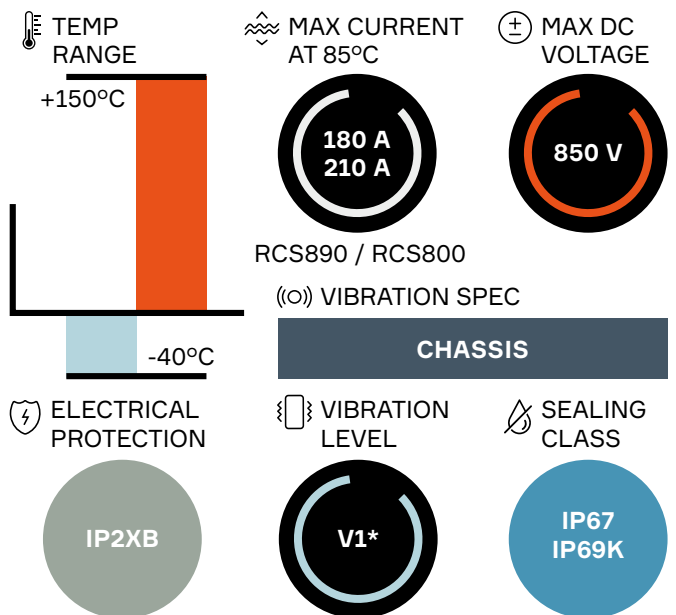
## APPLICATIONS

Inverter, battery, junction box, and power electric box

See back page for representative part numbers and packaging dimensions.



## TECHNICAL CHARACTERISTICS

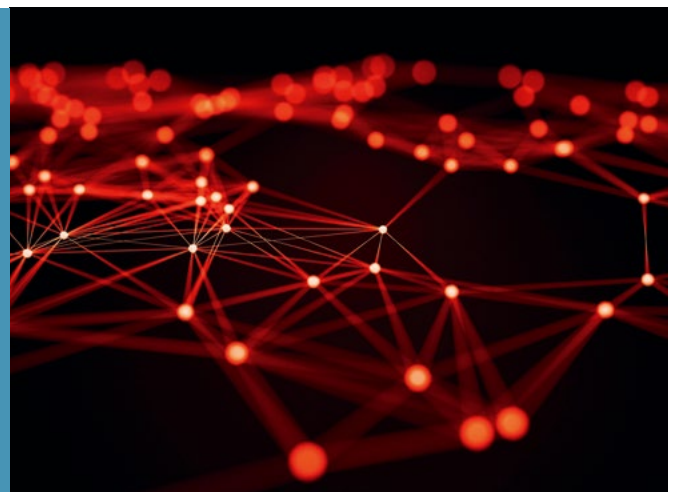


\* For classification V2 please consult an Aptiv representative.

## About Aptiv

Aptiv is a global technology company that develops safer, greener and more connected solutions enabling the future of mobility. Headquartered in Dublin, Aptiv has approximately 150,000 employees and operates 14 technical centers, as well as manufacturing sites and customer support centers in 45 countries.

Visit [aptiv.com](http://aptiv.com)



| Part number                | HVIL | Gender | Terminal size (mm) | Wire range        | Exit orientation | Mating part number |
|----------------------------|------|--------|--------------------|-------------------|------------------|--------------------|
| <b>RCS 890 Direct Mate</b> |      |        |                    |                   |                  |                    |
| 35084594                   | Yes  | Male   | 8                  | Pre assembled pin | 90°              | 35084575           |
| 35084575                   | No   | Female | 8                  | 35 / 50           | 90°              | 35084594           |
| <b>RCS 800 Direct Mate</b> |      |        |                    |                   |                  |                    |
| 35098453                   | No   | Female | 8                  | 35                | 180°             | 35099885           |
| 35099885                   | No   | Male   | 8                  | Pre assembled pin | 180°             | 35098453           |
| 35099880*                  | Yes  | Male   | 8                  | Without pin       | 180°             | 35098453           |

Please, refer to the High Voltage Catalogue for the full part number list.

\* Please contact your local Aptiv representative for serial production information.

## ASSOCIATED PARTS

### RCS 890 Direct Mate

| Part number | Description   |
|-------------|---|
| 33502217    | RCS 890 female terminal Ag 35 - 50 mm <sup>2</sup>                |
| 35166051    | RCS 890 female terminal Ag 70 mm <sup>2</sup>                     |
| 15549847    | DSQ 1.5 female Ag 0.35 - 0.50 mm <sup>2</sup>                     |
| 15549848    | DSQ 1.5 female Ag 0.75 - 1.00 mm <sup>2</sup>                     |
| 35082415    | Outer ferule 35 mm <sup>2</sup>                                   |
| 35234890    | Outer ferule 50 - 70 mm <sup>2</sup>                              |
| 35084603    | Recovery shield assembly 35 mm <sup>2</sup>                       |
| 35236787    | Recovery shield assembly 50 - 70 mm <sup>2</sup>                  |
| 35084610    | Cable seal device for 35 mm <sup>2</sup>                          |
| 35084586    | Cable seal device for 50 mm <sup>2</sup>                          |
| 35236755    | Cable seal device for 70 mm <sup>2</sup>                          |
| 15441379    | DCS/DSQ 1.5 Male Red Single Wire Seal 0.22 - 0.5 mm <sup>2</sup>  |
| 15441380    | DCS/DSQ 1.5 Male Grey Single Wire Seal 0.75 - 1.0 mm <sup>2</sup> |

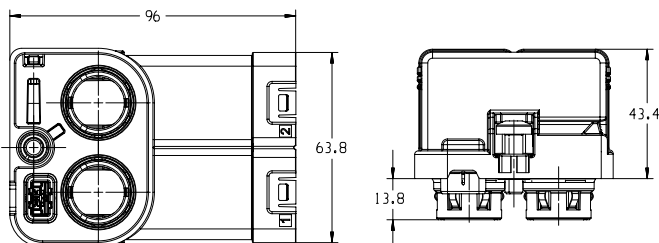
### RCS 800 Direct Mate

| Part number | Description  |
|-------------|--|
| 13893887    | RCS 800 female terminal Ag 35 - 50 mm <sup>2</sup> |
| 15441379    | DCS/DSQ 1.5 SWS 0.22 - 0.5 mm <sup>2</sup>         |
| 15441380    | DCS/DSQ 1.5 SWS 0.75 - 1.0 mm <sup>2</sup>         |
| 15549847    | DSQ 1.5 female Ag 0.35 - 0.50 mm <sup>2</sup>      |
| 15549848    | DSQ 1.5 female Ag 0.75 - 1.00 mm <sup>2</sup>      |
| 35082415    | Outer ferule 35 and 50 mm <sup>2</sup>             |
| 35082410    | Inner ferule 35 and 50 mm <sup>2</sup>             |
| 35099247    | Cable seal device for 35 mm <sup>2</sup>           |
| 35099248*** | Cable Seal device for 50 mm <sup>2</sup>           |
| 35092416    | RCS800 Tube 35 - 50 mm <sup>2</sup>                |

\*\*\* Available only by prototype, please contact your local Aptiv representative for more information on serial production.

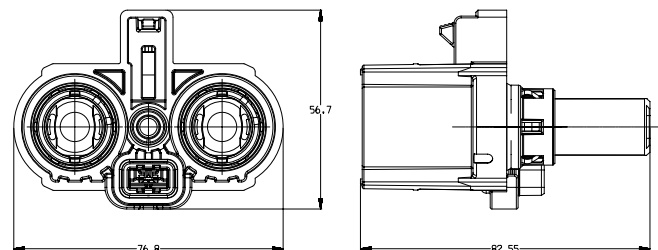
## DIMENSION MEASUREMENT SAMPLE

### RCS 890 Direct Mate



35084575

### RCS 800 Direct Mate



35098453

Part numbers, specifications, dimensions and performance data in this document are for general references only and are subject to change without notice. To verify product information, please contact an Aptiv representative.

CS-SP91-HV-En0519

• **APTIV** •

aptiv.com | © 2019 Aptiv. All rights reserved