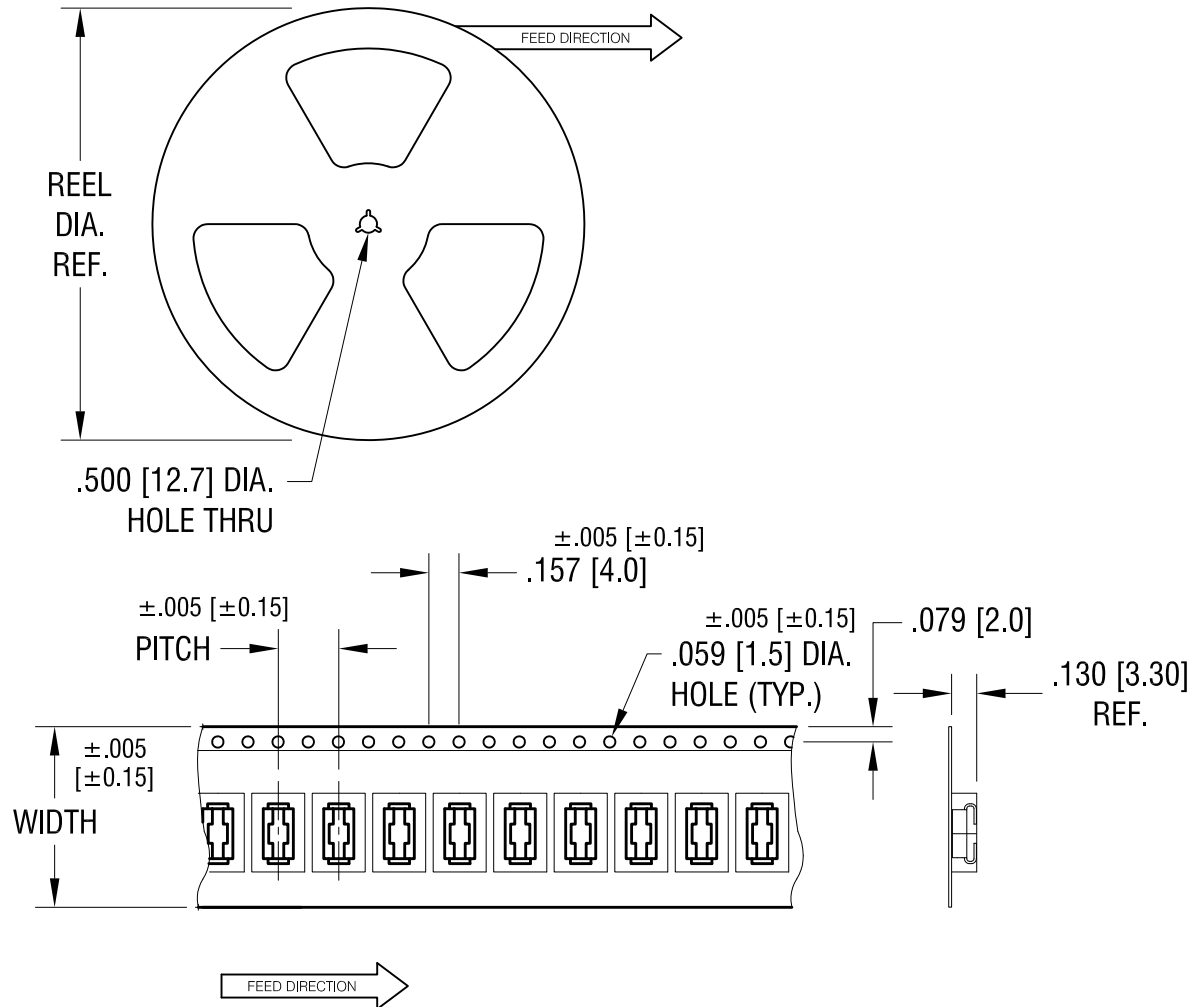


THIS DOCUMENT IS THE PROPERTY OF
KEYSTONE ELECTRONICS CORP. AND
SHALL NOT BE REPRODUCED, DISTRIBUTED
OR USED AS A BASIS FOR MANUFACTURE
WITHOUT PRIOR WRITTEN PERMISSION
FROM KEYSTONE ELECTRONICS CORP.



NOTES:

TAPE AND REEL SPECIFICATIONS:

1. TAPE:

MAT'L - ALL CONDUCTIVE POLYSTYRENE CARRIER
ANSI/EIA-481 STANDARD
.945 [24.0] WIDE; .315 [8.00] PITCH

2. REEL:

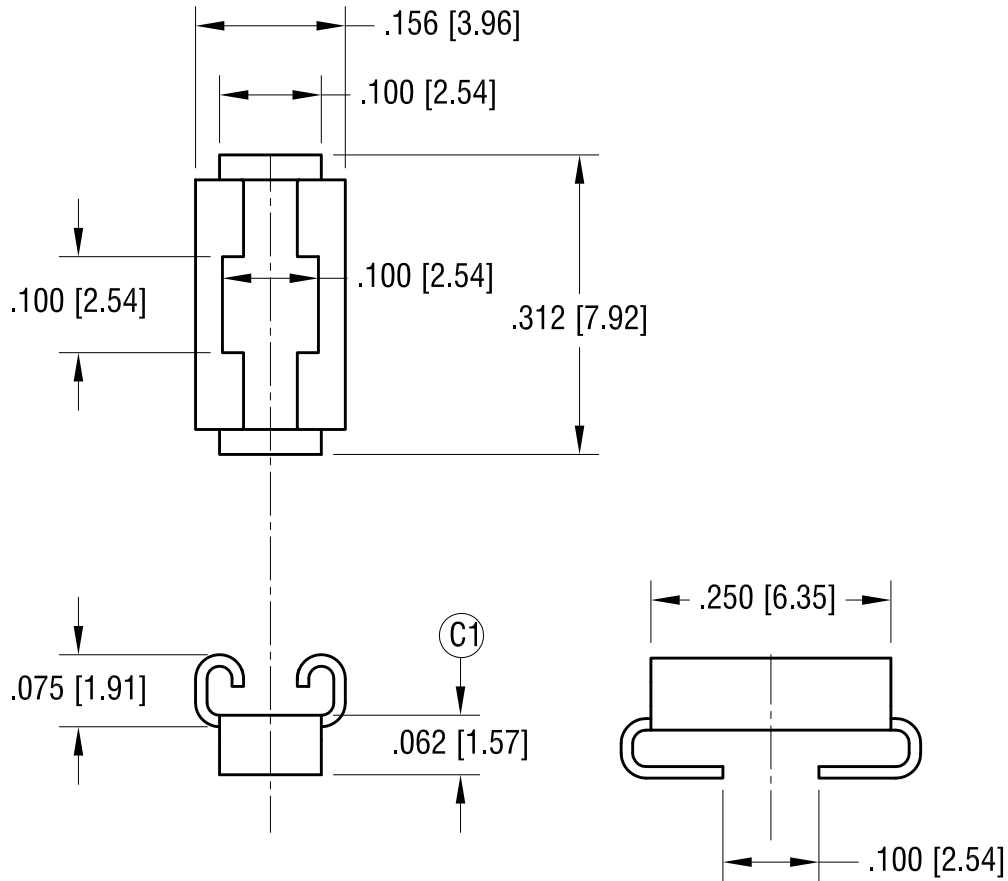
13.0 [330.2] DIA. 1000 PIECES OF
PART NO. 3569 PER REEL.

| | | |
|---------|--------------------------|------|
| 3.28.14 | CHANGE AS PER ECN 14-038 | C |
| 3.07.14 | CHANGE AS PER ECN 14-023 | B |
| 5.23.13 | CHANGE AS PER ECN 13-042 | A |
| DATE | DESCRIPTION | REV. |

| | | | |
|---|-----------------|---------------------|---------------|
| KEYSTONE ELECTRONICS CORP. | | | |
| www.keyelco.com • ASTORIA, N.Y. 11105-2017 • Tel (718) 956-8900 | | | |
| PART NAME | | FUSE HOLDER ON TAPE | |
| MATERIAL | | AS NOTED | |
| FINISH | | DRN BY | DATE |
| AS NOTED | | NT | 2.14.12 |
| | | APP'D | SCALE |
| | | LN | X |
| TOLERANCES | INCH [MM] | CODE | DWG NO. |
| DECIMAL | ± .015 [± 0.38] | C | 3569TR |
| ANGULAR | ± 1° | | |
| UNLESS OTHERWISE SPECIFIED | | | |

THIS DOCUMENT IS THE PROPERTY OF
KEYSTONE ELECTRONICS CORP. AND
SHALL NOT BE REPRODUCED, DISTRIBUTED
OR USED AS A BASIS FOR MANUFACTURE
WITHOUT PRIOR WRITTEN PERMISSION
FROM KEYSTONE ELECTRONICS CORP.

ACTUAL SIZE



| | | |
|----------|--------------------------|------|
| 3.28.14 | CHANGE AS PER ECN 14-037 | D |
| 2.07.14 | CHANGE AS PER ECN 14-022 | C |
| 12.28.09 | CHANGE AS PER ECN 09-195 | B |
| 10.19.09 | CHANGE AS PER ECN 09-151 | A |
| DATE | DESCRIPTION | REV. |

| | | | |
|---|-----------------|-------------------|-------------|
| KEYSTONE ELECTRONICS CORP. | | | |
| www.keyelco.com • ASTORIA, N.Y. 11105-2017 • Tel (718) 956-8900 | | | |
| PART NAME | | FUSE HOLDER | |
| MATERIAL | | .012 [0.30] BRASS | |
| FINISH | | DRN BY | DATE |
| MATTE TIN PLATE | | NT | 9.22.08 |
| | | APP'D | SCALE |
| | | LN | 5X |
| TOLERANCES | INCH [MM] | CODE | DWG NO. |
| DECIMAL | ± .005 [± 0.13] | C | 3569 |
| ANGULAR | ± 1° | | |
| UNLESS OTHERWISE SPECIFIED | | | |