

# Stud-mounted fuses



**Catalog symbol:** ACK-\_\_

**Description:**

Bussmann® series stud-mounted fuse.

**Specifications:**

**Ratings**

- Volts - 130 Vdc (or less)
  - 130 Vdc - (10-100 A)
  - 72 Vdc - (120-200 A)
  - 48 Vdc - (225-300 A)
  - 80 Vdc - (400 A)
- Amps - 10-400 A
- Interrupting rating - 10 kA

**Agency information**

- UL® Recognized 15-300A, Guide JFHR2, File E56412

**Features:**

- These fuses avoid needless openings from starting currents or surges
- A fuse link which operates only on very high overloads or short-circuits
- Thermal cutout functions on low overloads – the thermal cutout cannot operate quickly at any load, hence long timelag is obtained on high overloads of short duration
- This long time-lag also makes it unnecessary to use extra large size or over-size fuses

| Catalog numbers (amps) |        |         |         |
|------------------------|--------|---------|---------|
| ACK-10                 | ACK-40 | ACK-100 | ACK-200 |
| ACK-15                 | ACK-50 | ACK-120 | ACK-225 |
| ACK-20                 | ACK-60 | ACK-140 | ACK-250 |
| ACK-25                 | ACK-70 | ACK-150 | ACK-300 |
| ACK-30                 | ACK-75 | ACK-160 | ACK-400 |
| ACK-35                 | ACK-80 | ACK-175 | —       |

**Test specifications**

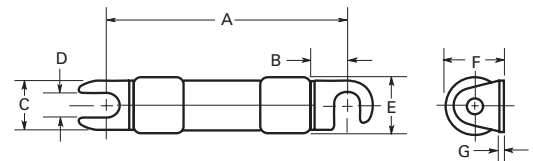
| Fuse | Load | Opening time |
|------|------|--------------|
| ACK  | 200% | 100 Seconds* |
|      | 300% | 35 Seconds*  |
|      | 500% | 13 Seconds*  |

\*Approximately.

**Recommended fuse blocks:**

| Catalog number | Block number | Catalog number | Block number |
|----------------|--------------|----------------|--------------|
| ACK 10-30      | 4228         | ACK 120-200    | 3569         |
| ACK 35-60      | 3411         | ACK 225-400    | 3578         |
| ACK 70-100     | 2322         |                |              |

**Dimensions - in (mm):**



| Catalog number | Dimensions in inches and (mm) |                   |                   | D                | E                 | F                 | G                |
|----------------|-------------------------------|-------------------|-------------------|------------------|-------------------|-------------------|------------------|
|                | A                             | B                 | C                 |                  |                   |                   |                  |
| ACK 10-30      | 2.5"<br>(63.5)                | 0.375"<br>(9.53)  | 0.500"<br>(12.70) | 0.250"<br>(6.35) | 0.557"<br>(14.15) | 0.588"<br>(14.94) | 0.031"<br>(0.79) |
| ACK 35-60      | 3.0"<br>(76.20)               | 0.470"<br>(11.94) | 0.685"<br>(17.40) | 0.344"<br>(8.74) | 0.812"<br>(20.63) | 0.860"<br>(21.84) | 0.051"<br>(1.30) |
| ACK 70-100     | 3.5"<br>(88.90)               | 0.547"<br>(13.89) | 0.750"<br>(19.05) | 0.312"<br>(7.92) | 1.062"<br>(26.98) | 1.15"<br>(29.21)  | 0.050"<br>(1.27) |
| ACK 120-200    | 3.750"<br>(95.25)             | 0.750"<br>(19.05) | 0.750"<br>(19.05) | 0.375"<br>(9.52) | 1.062"<br>(26.98) | 1.15"<br>(29.21)  | 0.050"<br>(1.27) |
| ACK 225-400    | 3.750"<br>(95.25)             | 0.610"<br>(15.49) | 0.750"<br>(19.05) | 0.312"<br>(7.92) | 1.062"<br>(1.062) | 1.125"<br>(28.58) | 0.050"<br>(1.27) |

Note: 10-60 amp fuses use brass terminals and ferrules.  
70-400 amp fuses use copper terminals and ferrules.

| Catalog symbol | Dimensions in Inches and (mm) |                   |                   |                  |                   |                   |                  |
|----------------|-------------------------------|-------------------|-------------------|------------------|-------------------|-------------------|------------------|
|                | A                             | B                 | C                 | D                | E                 | F                 | G                |
| ACK 10-30      | 2.5"<br>(63.5)                | 0.375"<br>(9.53)  | 0.500"<br>(12.70) | 0.250"<br>(6.35) | 0.557"<br>(14.15) | 0.588"<br>(14.94) | 0.031"<br>(0.79) |
| ACK 35-60      | 3.0"<br>(76.20)               | 0.470"<br>(11.94) | 0.685"<br>(17.40) | 0.344"<br>(8.74) | 0.812"<br>(20.63) | 0.860"<br>(21.84) | 0.051"<br>(1.30) |
| ACK 70-100     | 3.5"<br>(88.90)               | 0.547"<br>(13.89) | 0.750"<br>(19.05) | 0.312"<br>(7.92) | 1.062"<br>(26.98) | 1.125"<br>(28.58) | 0.050"<br>(1.27) |
| ACK 120-200    | 3.750"<br>(95.25)             | 0.750"<br>(19.05) | 0.750"<br>(19.05) | 0.375"<br>(9.52) | 1.062"<br>(26.98) | 1.15"<br>(29.21)  | 0.050"<br>(1.27) |
| ACK 225-400    | 3.750"<br>(95.25)             | 0.610"<br>(15.49) | 0.750"<br>(19.05) | 0.312"<br>(7.92) | 1.062"<br>(26.98) | 1.125"<br>(28.58) | 0.050"<br>(1.27) |

Note: 10-60 amp fuses use brass terminals and ferrules. 70-400 amp fuses use copper terminals and ferrules.

### Time-current curves – average melt

