

LETTERS IN CIRCLE INDICATE CHANGE FROM PRECEDING PRINT
 (K) REVISED & REDRAWN
 PAGE 1 OF 2

56 J

CONFORMING TO THE INFORMATION CONTAINED IN THIS DOCUMENT IS THE PROPERTY OF COOPER INDUSTRIES, INC. IT IS NOT TO BE REPRODUCED OR TRANSMITTED IN ANY FORM OR BY ANY MEANS, ELECTRONIC OR MECHANICAL, INCLUDING PHOTOCOPYING, RECORDING, OR BY ANY INFORMATION STORAGE AND RETRIEVAL SYSTEM, WITHOUT PERMISSION IN WRITING FROM COOPER INDUSTRIES, INC. UNAUTHORIZED REPRODUCTION OR USE OF THE INFORMATION CONTAINED HEREIN FOR ANY PURPOSE OTHER THAN THAT AUTHORIZED BY COOPER INDUSTRIES, INC. IS PROHIBITED. PERMISSION TO REPRODUCE OR TRANSMIT THIS DOCUMENT OR THE INFORMATION CONTAINED HEREIN IS GRANTED ON THE CONDITION THAT THE REQUESTING PARTY SHALL INDEMNIFY AND HOLD COOPER INDUSTRIES, INC. HARMLESS FROM ANY AND ALL DAMAGES, LOSSES AND EXPENSES, INCLUDING REASONABLE ATTORNEY'S FEES, WHICH MAY BE INCURRED BY COOPER INDUSTRIES, INC. AS A RESULT OF SUCH REPRODUCTION OR TRANSMISSION.

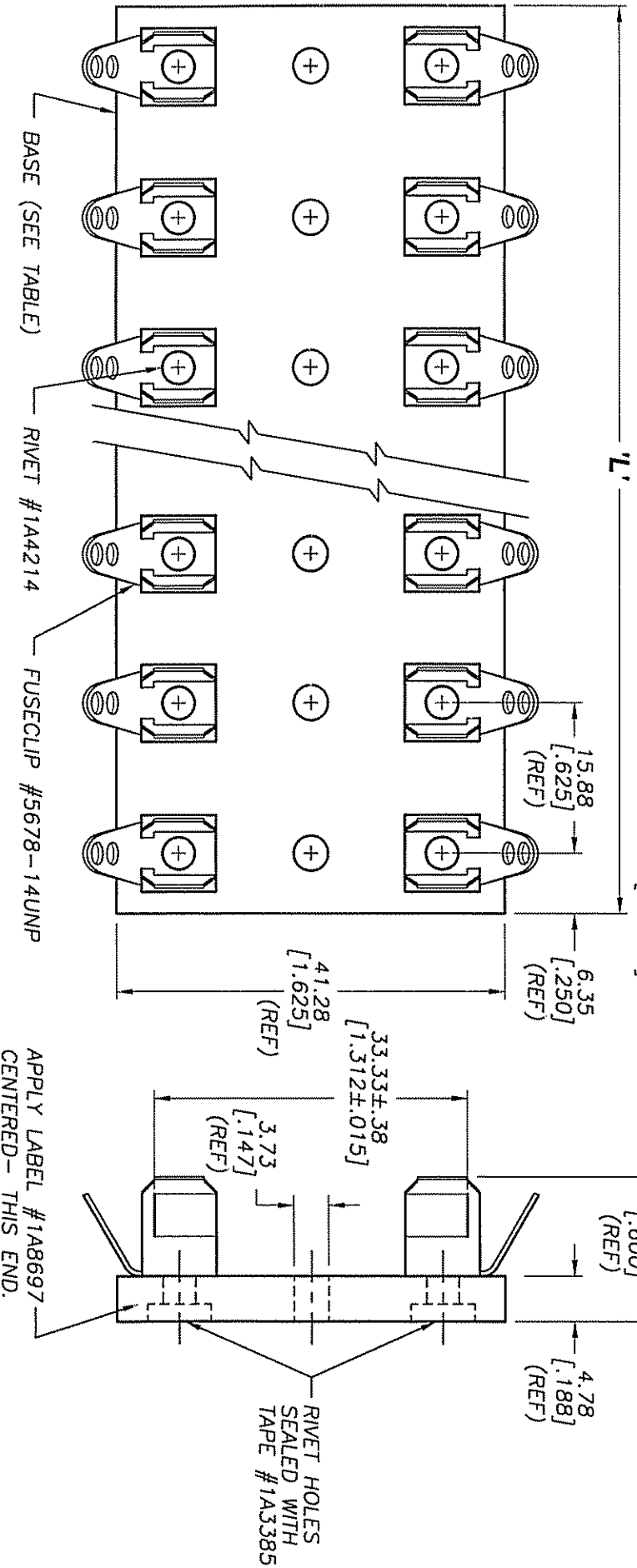
INDICATES CRITICAL DIMENSION OR FEATURE

THIRD ANGLE PROJECTION

SCALE: 1 1/2x

UNLESS OTHERWISE SPECIFIED TOLERANCES TO BE:
 METRIC ±.13mm
 INCHES ±.005"
 ANGULAR ±2°

56476



PACKAGING SPECIFICATION #1P1063

PART NO.	NO. OF POLES	BASE P/N	'L' LENGTH (REF)
3823-1	1	6623-1	12.70 [.500]
3823-2	2	6623-2	28.58 [1.125]
3823-3	3	6623-3	44.45 [1.750]
3823-4	4	6623-4	60.33 [2.375]
3823-5	5	6623-5	76.20 [3.000]
3823-6	6	6623-6	92.08 [3.625]

PART NO.	NO. OF POLES	BASE P/N	'L' LENGTH (REF)
3823-7	7	6623-7	107.95 [4.250]
3823-8	8	6623-8	123.83 [4.875]
3823-9	9	6623-9	139.70 [5.500]
3823-10	10	6623-10	155.58 [6.125]
3823-12	12	6623-12	187.33 [7.375]