

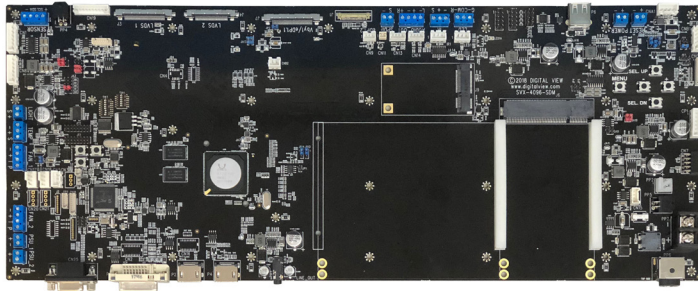
## SVX-4096-SDM

### 4K LCD controller with Intel® SDM

The SVX-4096-SDM is an advanced controller with support for Intel® SDM cards for kiosks & digital signage displays using LCD panels up to 4096 x 2160 resolution.

#### Key Features:

- » Up to 4096 x 2160 input / Up to 4096 x 2160 LCD panels
  - » HDMI 2.0, HDMI 1.4, DVI-I
  - » V-by-One, eDP, LVDS panel connection @60Hz (120Hz with IE-2000)
  - » Intel® SDM small & large slots
  - » RS-232 for commands & control
  - » Sensor & fan connectivity support
  - » Mini PCIe expansion
- » Part number: 4176700xx-3



#### Panel Connectivity

<b>V-by-One (8 channel):</b>	up to 4096 x 2160 @60Hz *for 16 channel, 120Hz panels add IE-2000
<b>eDP (HBR/HBR2):</b>	up to 4096 x 2160 @60Hz
<b>LVDS (8 channel):</b>	up to 4096 x 2160 @60Hz
<b>Panel resolutions:</b>	4096 x 2160, 3840 x 2160, 2560 x 1440/1600 1920 x 1200, 1920 x 1080
<b>Panel power:</b>	Supports 3.3V, 5V, 10V, 12V & 18V panels

#### Input

<b>HDMI 2.0:</b>	60Hz up to 4096 x 2160 75Hz up to 1600 x 1200
<b>HDMI 1.4:</b>	30Hz up to 4096 x 2160 60Hz up to 2560 x 1600 75Hz up to 1600 x 1200
<b>DVI-I Dual Link:</b>	30Hz up to 4096 x 2160 60Hz up to 2560 x 1600 75Hz up to 1600 x 1200
<b>Intel® SDM slots:</b>	Small and Large Mini PCIe expansion slot

#### Reliability

<b>Calculated MTBF:</b>	In excess of 100,000 hours
<b>Warranty:</b>	3 years

#### Features

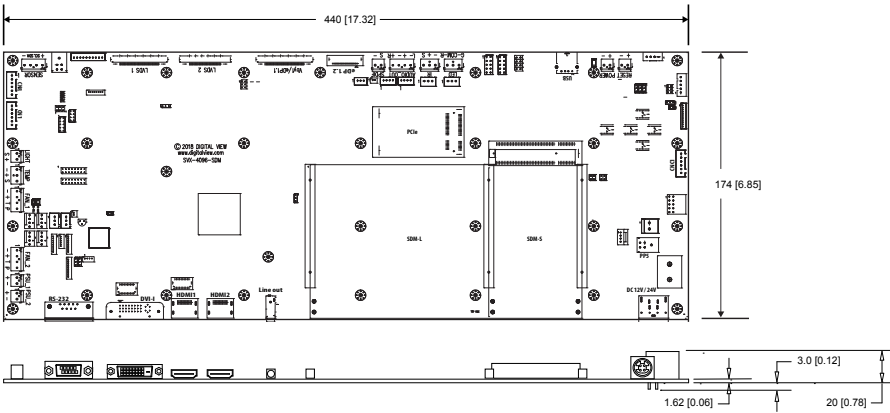
<b>Colors:</b>	Up to 10 bit per color, ie 1.06 billion colors
<b>Function Display:</b>	On Screen Display (OSD) menu
<b>Function Controls:</b>	External buttons, Infra-Red controls, RS-232 serial port control, On-board buttons
<b>Image Control:</b>	Brightness, Contrast, Color Temperature, Image position & scaling, Saturation, Hue, Sharpness
<b>Other On-Screen:</b>	System information, Programmable hotkeys, Factory reset, Picture in Picture (PiP), Picture by Picture (PbP), FRC image enhancement, OSD menu transparency, Audio volume
<b>Other:</b>	DDC-CI support Connection for fans, temp sensors, ambient brightness, I <sup>2</sup> C Internal USB 2.0 for touch (connects to SDM)
<b>Communication:</b>	RS-232
<b>Power:</b>	+12VDC / +24VDC ±5%, 10W (controller only)
<b>Backlight:</b>	DPMS Enable pin (3.3V or 5V), PWM
<b>Plug &amp; Play:</b>	DDC 1,2/b compatible
<b>Status Indicator:</b>	Dual color LED support
<b>Audio:</b>	Audio line-out, connector for internal audio amp.

**Custom Splash-screen:** The SVX-4096-SDM supports custom splash-screen when powering on. This requires custom firmware.

**Firmware upgrade:** The SVX-4096-SDM firmware version can be upgraded directly from a PC running Windows 7~10 directly via the Displayport. Contact Digital View or distribution partner for details.

# SVX-4096-SDM 4K, Ultra-HD LCD controller with SDM

## Mechanical Drawing



## Connector Definitions

<b>CN1</b>	Second RS-232 serial control
<b>CN2</b>	Internal connector for DVI
<b>CN5</b>	External temperature sensor
<b>CN6</b>	Light sensor connector
<b>CN7</b>	Audio board connector
<b>CN8</b>	RS-232 serial control
<b>CN9</b>	Ambient light sensor connector
<b>CN10</b>	Fan & backlight power monitoring
<b>CN13</b>	Line in
<b>CN14</b>	Speaker out
<b>CN15</b>	Power connector for IE-2000
<b>CN16</b>	On board internal connector for HDMI
<b>CN19</b>	Additional panel power output
<b>CNA1</b>	Auxiliary power output
<b>CNB1</b>	Backlight inverter
<b>CNB2</b>	Backlight status input connector
<b>CNC1</b>	Function menu buttons connector
<b>IR1</b>	Infra-red sensor connector
<b>J1</b>	eDP
<b>J3, J4</b>	LVDS 1 & 2
<b>J5</b>	Panel power output
<b>J7</b>	V-by-One panel signal output
<b>LED1</b>	Power LED connector
<b>P1</b>	DVI-I
<b>P2</b>	HDMI (1.4)
<b>P4</b>	HDMI (2.0)
<b>P6</b>	USB 2.0
<b>PP2~7</b>	Power inputs: 12/24VDC
<b>Fan</b>	Fan connection
<b>Temp</b>	Sensor connection
<b>I<sup>2</sup>C</b>	Sensor connection

## Ordering Options

<b>SVX-4096-SDM</b>	<b>P/N: 4176700xx-3</b>
<b>IE-2000, for 120Hz panels</b>	<b>P/N: 4175600xx-3</b>
Inverter interface board	[subject to panel model]
IR remote control	P/N: 559000106-3
OSD digital button board	Kit 67110-3
OSD membrane kit - Vertical	Kit 67134-3
OSD membrane kit - Horizontal	Kit 67135-3
Audio Add-on board	P/N: 4169400xx-3

## Drawings

- » 2D (jpg)
- » 3D (SLDPRT)

### Download at:

<http://www.digitalview.com/products/svx-4096-sdm-lcd-controller>

## Available Resources

- » Instruction manual
  - » Revision control documentation
  - » Firmware upgrade manual\*\*
  - » Mechanical drawing
  - » Custom engineering: Splash screen, OSD menu, coatings, & more...
- \*\* Available on request

### Controller Solution Generator

<http://www.digitalview.com/csg>

### USA

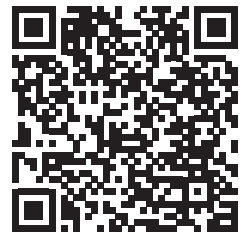
18440 Technology Drive, Morgan Hill, CA 95037, USA  
t: +1 (408) 782-7773

### EUROPE

The Lake House, Knebworth Park, Herts, SG3 6PY, UK  
t: +44 (0) 20-7631-2150

### ASIA

705-708 Texwood Plaza, 6 How Ming St, Kwun Tong, Hong Kong  
t: (852) 2861-3615



The QR code above links to the product page on the website