

CONTROL KNOBS, MOLDED ABS

FEATURES

- Cosmetic black gloss finish.
- Anti-static plastic.
- Positive retention #6-32 set screws.
- Fits 1/8" dia. & 1/4" dia. shafts.
- Functionally rugged.
- Special designs available.

MATERIALS

Knob:

Custom molded ABS, color black.

Inlay:

Spun aluminum

Threaded Insert:

Brass.

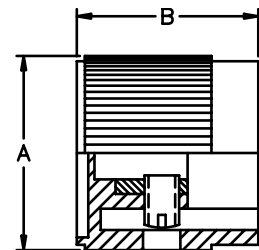
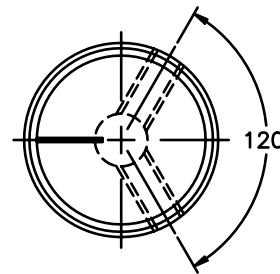
Setscrew:

Heat treated high alloy steel with cup point and hex head, or slotted head. Note: 1 or 2 supplied, depending on model.

Notes: Dimensions in inches & (millimeters). Shaft size is last 3 digits of Model No.

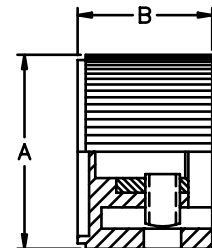
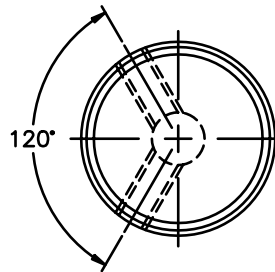
SPECIFICATIONS SUBJECT TO CHANGE WITHOUT NOTICE.

41012 SERIES Straight knurl with line indicator on top (Top inlay & line or dot indicators available in color - consult factory.)



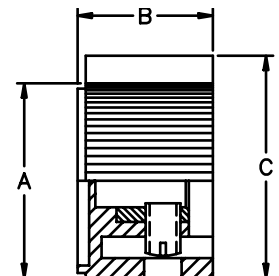
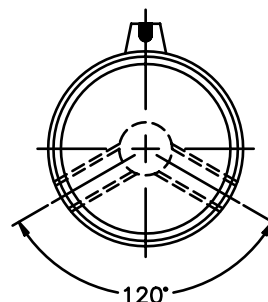
MODEL	A	B
410121B1/8	.520 (13.2)	.640 (16.3)
410121B1/4	.520 (13.2)	.640 (16.3)
410122B1/8	.720 (18.3)	.740 (18.8)
410122B1/4	.720 (18.3)	.740 (18.8)
410123B1/8	.920 (23.4)	.860 (21.8)
410123B1/4	.920 (23.4)	.860 (21.8)

41013 SERIES Straight knurl with no indicator marking (Indicator lines and dots available - consult factory.)



MODEL	A	B
410131B1/8	.520 (13.2)	.480 (12.2)
410131B1/4	.520 (13.2)	.480 (12.2)
410132B1/4	.720 (18.3)	.580 (14.7)
410133B1/4	.920 (23.4)	.640 (16.3)

43021 SERIES Straight knurl pointer with line indicator on pointer side



MODEL	A	B	C
430211B1/8	.504 (12.8)	.480 (12.2)	.610 (15.5)
430211B1/4	.504 (12.8)	.480 (12.2)	.610 (15.5)
430212B1/4	.712 (18.1)	.579 (14.7)	.750 (19.1)
430213B1/4	.906 (23.0)	.642 (16.3)	1.050 (26.7)