

DRAWING MADE IN THIRD ANGLE PROJECTION

3

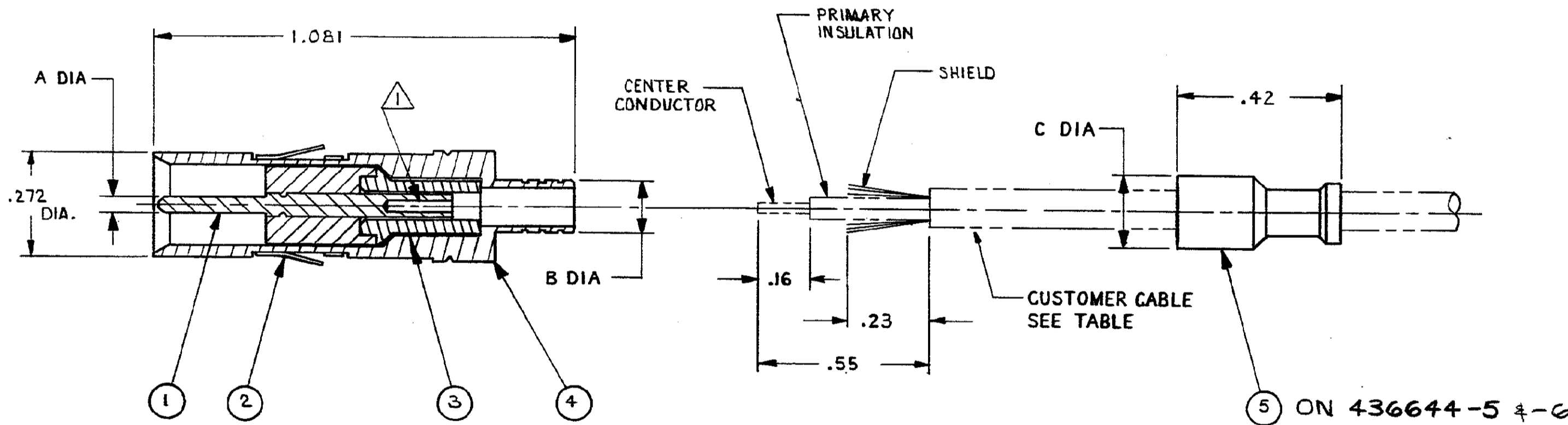
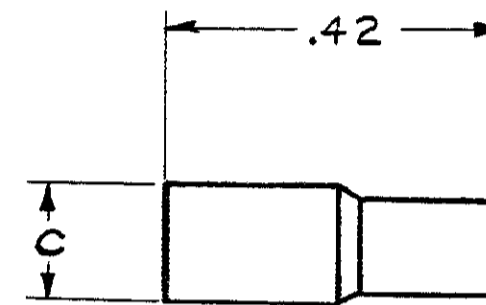
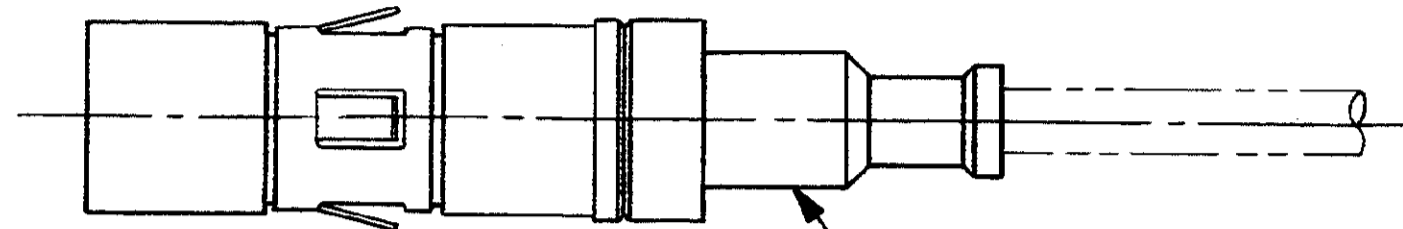
2

1

4582 LOC DF PIST

THIS DRAWING IS UNPUBLISHED. RELEASED FOR PUBLICATION, 19  
 © COPYRIGHT 19 BY AMP INCORPORATED, HARRISBURG, PA. ALL INTERNATIONAL RIGHTS RESERVED. AMP PRODUCTS MAY BE COVERED BY U.S. AND FOREIGN PATENTS AND/OR PATENTS PENDING.

P	F	ZONE	LTR	DESCRIPTION	DATE	APPROVED
			Q	RELEASED TO CUSTOMER	12-22-83	RS
			A	REVISED PIN SLEEVE PICTURE	2-6-84	CO
✓	✓		B	WAS 83-17745-2 SH2 NPR S2677	3-5-84	DJH
✓	✓		G	1.081 WAS 1.075, ECN S2783	7-30-84	RS
✓	✓		D	ADDED CRIMPER NO'S, REV'D CABLE PICT, ECN S2828	9-20-84	JM
✓	✓		E	REVISED ECN S3099	6-12-85	RV
			F	REVISED ECN S3296	2-11-86	RV
				ADDED -5 NPR S3297	2/14/86	RV
				ADDED -2, -3 & -4 (PREASSIGNED)		
✓	✓		G	REVISED ECN S4056	6-18-87	CJT-BS
✓	✓		H	REV PER ECN DF-0350	2-2-88	NR 1871
✓	✓		J	ADDED -6	3-30-88	1871
✓	✓		K	REV PER ECN DF-1223	T.W.V-9-89	1871



58343-1	.22	.183	.039-.040	RG-180	328664	436643-3	436641-2	436585-4	436642-1	436644-6
58343-1	.22	.183	.029-.030	RG-180	328664	436643-3	436641-2	436585-4	436642-2	436644-5
—	.17	.110	.029-.030	RAYCHEM 9530H1014-9X	—	—	—	—	—	—4
—	.17	.110	.039-.040	RG-142	—	—	—	—	—	—3
58251-1	.17	.110	.029-.030	RG-179	328666	436643-1	436641-1	436585-4	436642-2	—2
58251-1	.17	.110	.039-.040	RG 174/U, 188,316	328666	436643-1	436641-1	436585-4	436642-1	436644-1
FERRULE CRIMP TOOL	C	B	A	WIRE TYPE	⑤ FERRULE	④ BARREL	③ SLEEVE	② SPRING	① PIN & SLEEVE ASSY	KIT PART NO.

- ① CRIMP CENTER CONDUCTOR WITH HAND TOOL M309, WITH DANIELS POSITIONER TP735.
- ② CRIMP BRAID BETWEEN BARREL AND FERRULE WITH TOOL SPECIFIED IN TABLE.
- 3. REFER TO IS 6911 FOR COMPLETE ASSY PROCEDURE.

UNLESS OTHERWISE SPECIFIED DIMENSIONS ARE IN INCHES. TOLERANCES ON: DECIMALS ±.02 ANGLES	CONTRACT NO		<b>AMP</b>   AMP INCORPORATED Harrisburg, Pa. 17105			
	MATERIAL	DR R. Stone 12-22-83				NAME PATCHCORD KIT, COAX, MALE, FRONT, MID
FINISH	CHK R. Smith 12-28-83	APPD 12-30-83	DSGN APPD	SIZE C	FSCM NO 00779	DRAWING NO 436644
	OTHER APPD			SCALE 4:1	SHEET 1 OF 1	