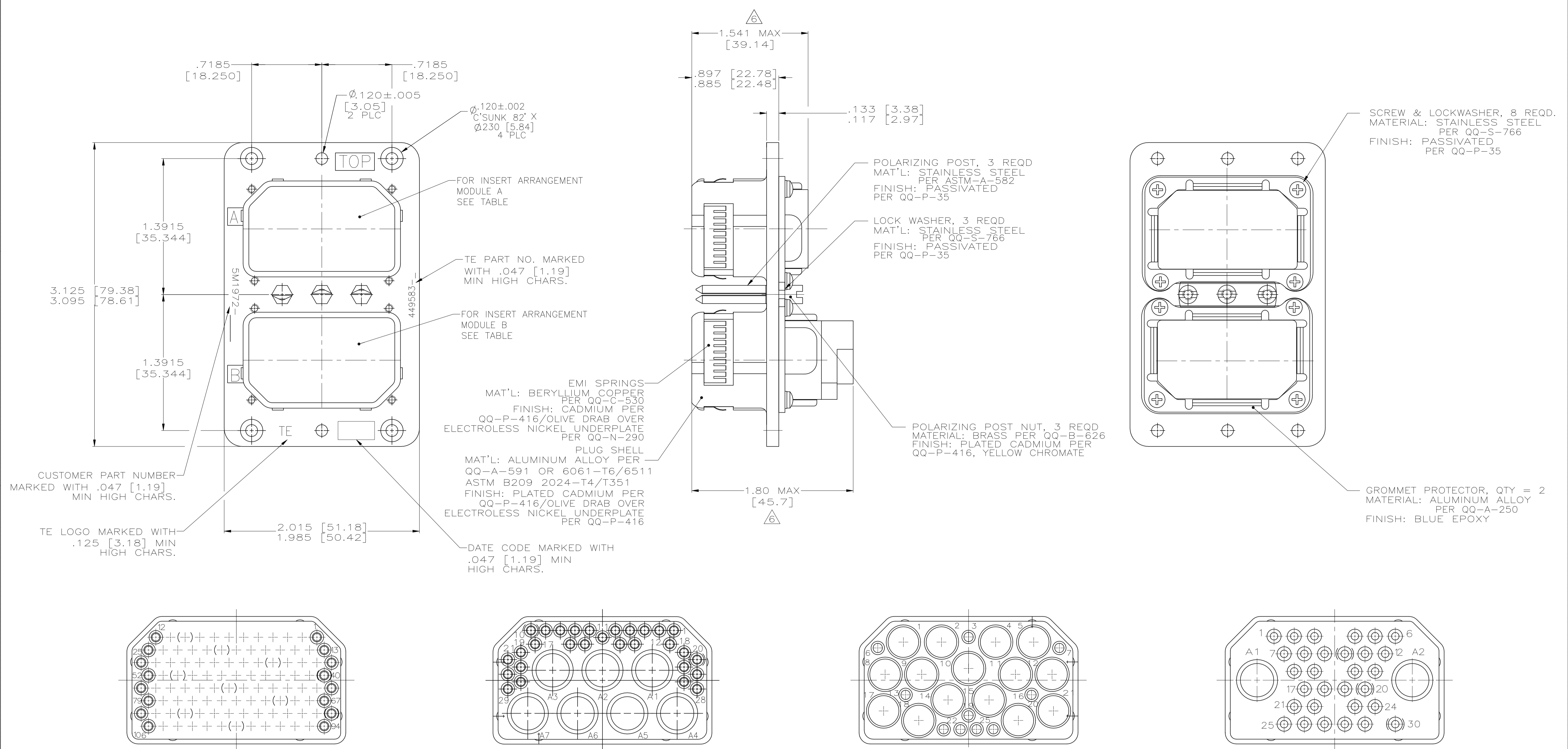


REVISIONS					
P	LTR	DESCRIPTION	DATE	DMN	APVD
F		REVISED PER ECO-21-003630	5-18-21	CT	RL



- KEYS INSTALLED IN POSITIONS AS SHOWN IN TABLE.
  - CONTACTS ARE INCLUDED IN A CONTAINER WITHIN THE CONNECTOR PACKAGE FOR SHIPMENT.
  - ALL DIMENSIONS CONFORM TO MIL-C-81659 WITH EXCEPTION TO EMI SPRING FINGERS.
  - COAX/TRIAX CONTACTS TO BE PURCHASED SEPARATELY.
  - CONFORMS TO REQUIREMENTS OF MCDONNELL DOUGLAS 5M1972.
- △ CONNECTOR VIEW AND INSERT LAYOUT IS SHOWN FOR 449583-1.  
 △ MATING FACE SHOWN FOR REFERENCE ONLY.

PART NUMBER	CUSTOMER PART NUMBER	POLARIZING POSITION	MOD A	MOD B
449583-1	5M1972-01P02P	04	106P	36C7P
<del>OBSOLETE</del> 449583-2	5M1972-01P01P	04	106P	106P
<del>OBSOLETE</del> 449583-3	5M1972-01P03S	02	106P	32C2
449583-4	5M1972-04P01P	45	25C15	106P
<del>OBSOLETE</del> 449583-5	5M1972-02P01P	01	36C7P	106P
449583-6	5M1972-02P01PA	01	36C7P	106P

THIS DRAWING IS A CONTROLLED DOCUMENT.		DIN T. ALEXANDER 4-17-96		TE Connectivity	
DIMENSIONS: INCHES		CHK K. GUARAGNO 4-22-96		NAME ARINC 404 KIT, MME2P106P36C7P-0004 (204) WITH EMI FINGERS	
TOLERANCES UNLESS OTHERWISE SPECIFIED:		APVD K. GUARAGNO 4-22-96	APPLICATION SPEC		
0 PLC ± -		SIZE CAGE CODE DRAWING NO			
1 PLC ± -		WEIGHT 0.000000 A1 00779 C=449583			
2 PLC ± -		CUSTOMER DRAWING SCALE 2:1 SHEET 1 of 1 REV F			
3 PLC ± .010 [0.25]					
4 PLC ± .0050 [0.130]					
ANGLES ±					