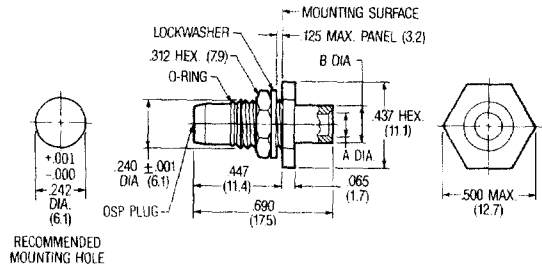
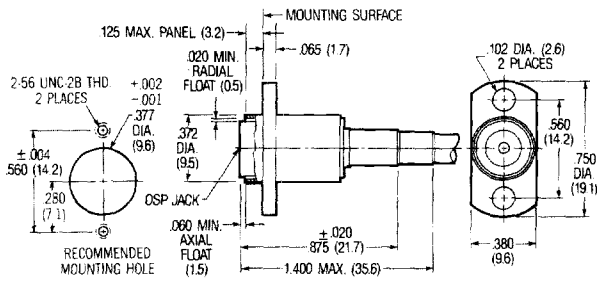


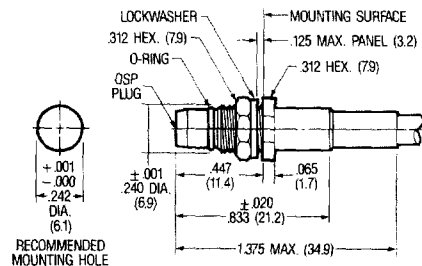
74



75



76



77

DESC Part Number	M/A-COM Part Number	Outline	Assembly Procedure	Cable	Commercial Alternate
85071ZSGA	4506-5015-02 <sup>1</sup>	74	45-002	XIII	4506-7901
85071ZSGB	4506-5016-02 <sup>1</sup>	74	45-008	XII	4506-7955
85072ZSGA	4503-5022-00 <sup>2</sup>	75	45-001	XIII	4503-7941
85072ZSGB	4503-5023-00 <sup>2</sup>	75	45-012	XII	4503-7989
85073ZSGA	4536-5007-02 <sup>3</sup>	76	45-013	XIV, XVI	4536-7986
85073ZSGB	4536-5008-02 <sup>3</sup>	76	45-014	XVII	4536-7941
85074ZSGA	4533-5007-02 <sup>3</sup>	77	45-018	XIV, XV	4533-7958
85074ZSGB	4533-5008-02 <sup>3</sup>	77	45-017	XVII	4533-7941

1. Finish: Inner housing that is soldered to cable is gold plated. Outer housing is passivated stainless steel.  
 2. Finish: Housing that is soldered to cable outer conductor is gold plated.  
 3. Finish: Passivated stainless steel. For gold plate, change the Part Number suffix from -02 to -00.  
 See Appendix for description of interface and cable types.  
 \* Defense Electronics Supply Center, Dayton, Ohio