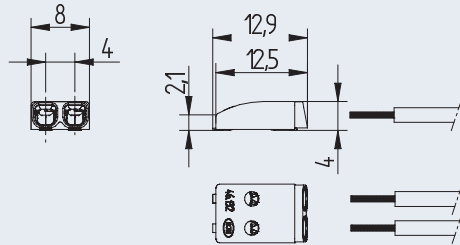
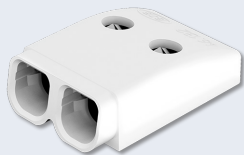
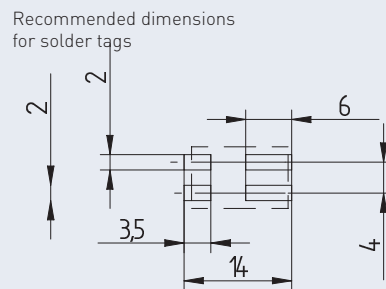


# SMD Terminal blocks

46.132 · SMD Terminal block - MiniFlex



General note: It is recommended to make an electrical connection between both poles of each polarity on the solder pad.



## SMD Terminal block - MiniFlex with push wire contacts and contact opening function

2 pole - 46.132.2001.50

Direct insertion of solid and stranded, tinned wire ends and finely stranded conductors by using the contact opening function

Contact opening function - also for release of already inserted wires

Mounting and wiring position: PCB top side

Machine-compatible "tape-and-reel" packaging

Fixing: Lead-free reflow soldering according to DIN EN 610760-1, section 6

Material: Housing: PPA, white  
Contact material: CuNi  
Contact surface: hot-dipped tinned

To operate the contact opening function, we recommend the use of our tools 46.131.U802.89 and 46.131.-397.80

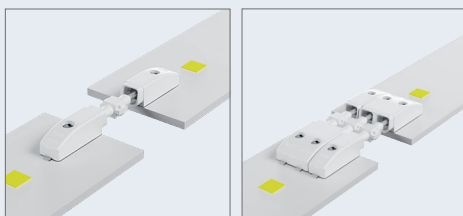
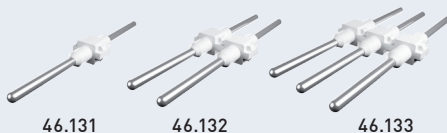
Packaging data 46.132.2001.50	
Weight per piece	0.5 g
Pieces per reel	1.750 pcs
Diameter of tape-and-reel packaging	381 mm (15")
Reel width	24 mm
Pitch distance	12 mm
Weight per reel	1.295 kg
Number of reels per carton	13 pcs
Number of SMD terminal blocks per carton	22.750 pcs
Weight per carton	18.10 kg
Carton dimensions (LxWxH)	400 x 405 x 415 mm



wt. 0.24 g    pkg. 1750    part no. 46.132.2001.50

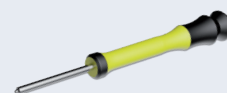
### Accessories:

SMD Mini-Flex-B2B-connector. For connecting PCBs. Connectors are available in 26 mm (U701), 28 mm (U702) and 30 mm (U703) length.



### Contact opening tool

For opening the contacts when using fine-stranded conductors or to remove already inserted conductors.



46.131.U802.89



46.131.-397.80

Integrated stripping function for wire ends cut but not stripped

## SMD Terminal blocks

46.132 · SMD-Terminal block - MiniFlex  
General technical information

Connection data	
Connection technology	Push wire contacts
Solid wires	0.20 - 0.75 mm <sup>2</sup> , AWG 24-18
Stranded, tinned wires	0.20 - 0.5 mm <sup>2</sup> , AWG 24-20
Stranded wires	0.20 - 0.75 mm <sup>2</sup> , AWG 24-18
Strip length (ø < 2.1 mm)	8 +1 mm
Strip length (ø 2.1 - 2.7 mm)	9 +1 mm
Conductor entry angle to the PCB	0°
Wire release function by	Contact opening tool
Pull-out force according to DN 60999-1	
0.2 mm <sup>2</sup>	min. 10 N
0.34 mm <sup>2</sup>	min. 15 N
0.5 mm <sup>2</sup>	min. 20 N
0.75 mm <sup>2</sup>	min. 30 N
Insertion force	max. 10 N

Geometrical data	
Pin spacing	4 mm / 0.16 inch
Width	8 mm / 0.32 inch
Height	4 mm / 0.16 inch
Depth	12.9 mm / 0.51 inch
Diameter of tape-and-reel packaging	381 mm (15")
Reel width	24 mm
Pitch distance	12 mm
Packaging unit tape-and-reel	1.800 tbc
Packaging unit cardboard	23.400 (13 reels) tbc

Material data	
Insulating material group	I
Insulating material	PPA, white
PTI	600
Flammability class, based on UL 94	V0
Contact material	CuNi
Contact surface	hot-dipped tinned

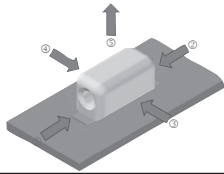
Mechanical data	
Mounting position	PCB top side
Mounting type	Lead-free reflow soldering

Temperature data	
Marginal temperatures	-40 °C to + 150 °C
Ambient temperature	-40 °C to + 105 °C
T-classification according to IEC 60998-1 para. 12	120°

Rated data according to IEC / EN 60947-7-4 (IEC/EN 60664-1)	
Rated voltage (III / 3)	63 V
Rated impulse voltage (III / 3)	2.5 kV
Rated voltage (III / 2)	160 V
Rated impulse voltage (III / 2)	2.5 kV
Rated voltage (II / 2)	320 V
Rated impulse voltage (II / 2)	2.5 kV
Rated current	9 A

Rated data according to UL 1977	
Rated voltage UL 1977	320 V
Rated current UL 1977	9 A

Country specific certificates	
VDE ENEC	EN 60947
UL	cURus, File No. E-365006

Shear forces according to IEC 62137-1-2: 2007.	
<p>These values are maximum values that apply only for impuls, not for continuous load.</p> 	
Direction 1 + 2 shear force along	70
Direction 3 + 4 shear force across	30
Direction 5 pull-off force	30