



Vectorbord® Backplanes

Power Interface, P47

Vectorbord® Power Supply Backplanes

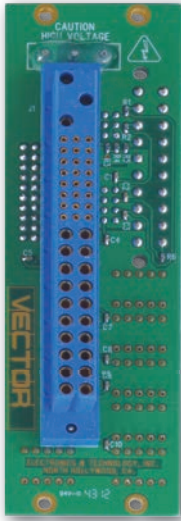
Power supply P47 interface backplane boards provide a modular approach for the addition of plug-in, hot-swap power supplies. As a result there is no need to modify expensive backplanes to incorporate redundant power supplies or N+1 configurations. Multiple power supply backplanes may be bridged together for additional power supply requirements.

This backplane routes the AC or DC input to the power supply, which converts it to the necessary voltages for CompactPCI or VME and then routes those voltages to power lugs on the rear of the backplane. Power connections can then be easily made to existing backplanes.

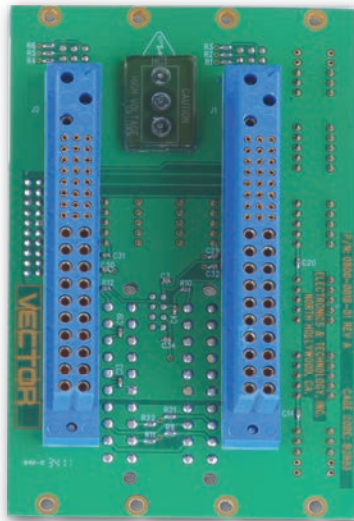
Features

- Power Interface Specification PICMG 2.11 Rev 1.0
- Input Power : AC or DC (3-pin AMP Mate-N-Lok Connector)
- DC output voltages : +5V, +3.3V, +12V, -12V
- Voltage output options
 - 20-pin ATX Connector or Power Bugs (Screw Terminals) for higher current requirements
- Local or Remote voltage sensing options
- Geographical address headers for each power supply

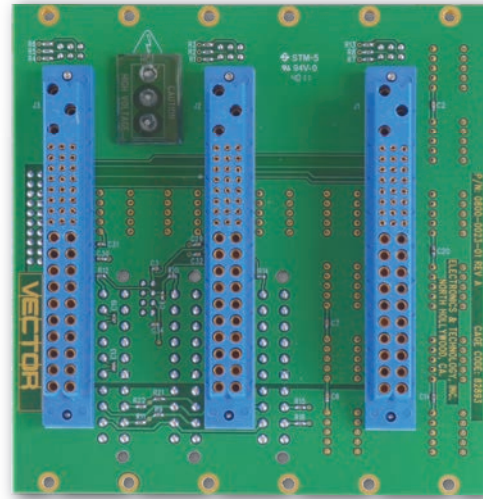
Backplanes



4626-11



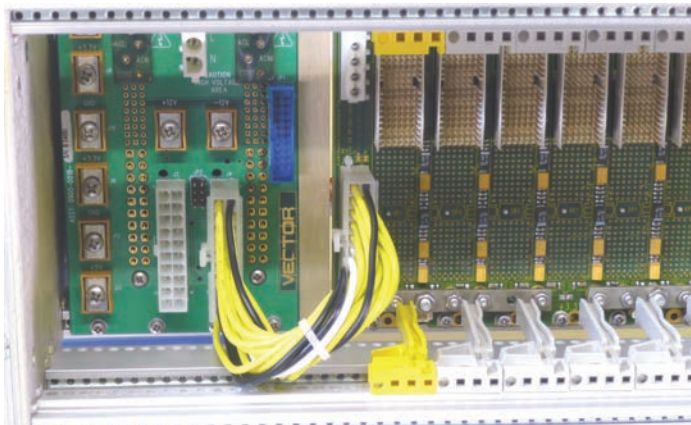
4626-12



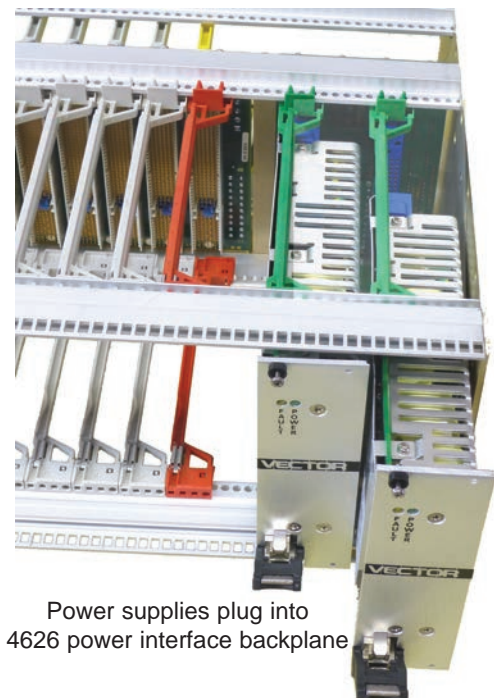
4626-14

Model No.	Size	Description
4626-11	3U x 8HP (5.067"H x 1.544"W)	Power backplane, single P47, for one plug-in power supply
4626-12	3U x 16HP (5.067"H x 3.144"W)	Power backplane, dual P47, for two plug-in power supplies
4626-14	3U x 24HP (5.067"H x 4.744"W)	Power backplane, triple P47, for three plug-in power supplies

See page 80 for Plug-In Power Supplies for above



4626 ATX connection to cPCI backplane or screw terminals (power bug) wiring



Power supplies plug into 4626 power interface backplane

