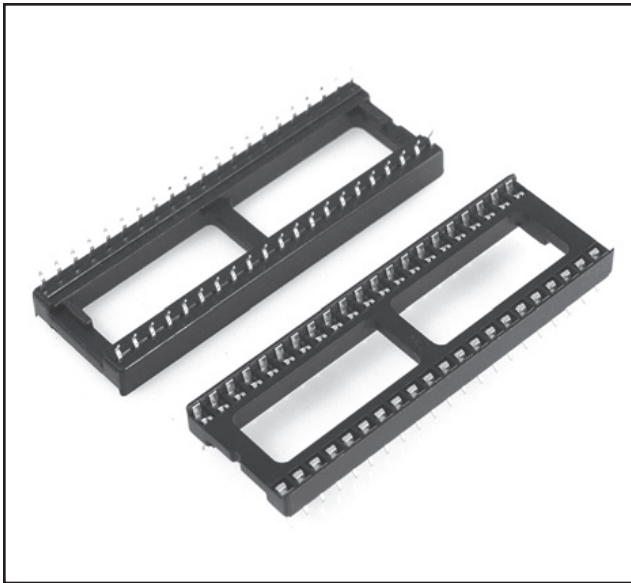


# 3M™ DIP Socket

Stamped and Formed, Dual-Wipe

4800 Series



- Dual leaf, high compression contact provides reliable termination
- Automatic insertion option is compatible with most insertion equipment
- Side and end stackable
- RoHS Compliant. See the Regulatory Information Appendix (RIA) in the "RoHS Compliance" section of [www.3mconnector.com](http://www.3mconnector.com) for compliance information (RIA E1 and C1 Apply)

Date Modified: April 19, 2011

TS-1099-B  
Sheet 1 of 2

---

## Physical

<b>Marking</b>	
<b>Insulation Material:</b>	Polyester Glass Filled
Flammability:	UL 94V-0
Color:	Black
<b>Contact Material</b>	Phosphor Bronze
Underplating:	35 $\mu$ " [ 0.89 $\mu$ m ] min. Nickel overall
Surface Plating:	135 $\mu$ " [ 3.43 $\mu$ m ] min. Matte Tin
<b>Insertion/Withdrawl Forces</b>	
Insertion Force:	340 grams max. per contact
Withdrawl Force:	80 grams min. per contact
<b>Acceptable Pin Sizes</b>	
Diameter:	.010" - .011" [ 0.25 mm - 0.27 mm ]
Length:	.100" - .130" [ 2.54 mm - 3.30 mm ]
<b>Mounting Information</b>	
Hole Diameter:	.035" - .043" [ 0.90 mm - 1.10 mm ]
<b>Marking</b>	None

---

## Electrical

<b>Current Rating:</b>	1 A
<b>Insulation Resistance:</b>	5,000 M $\Omega$ at 500 V <sub>DC</sub>
<b>Withstanding Voltage:</b>	100 V <sub>AC</sub> for 1 minute

---

## Environmental

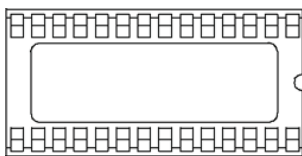
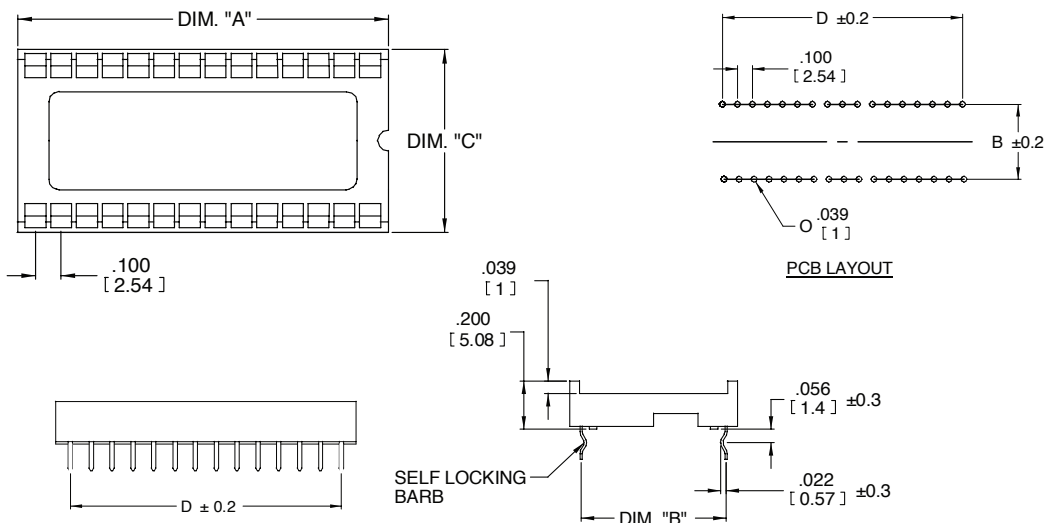
<b>Temperature Rating:</b>	-25°C to +85°C
<b>Process Rating:</b>	260°C max. wave solder reflow only

# 3M™ DIP Socket

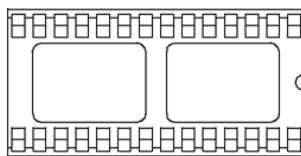
Stamped and Formed, Dual-Wipe

4800 Series

Contact Quantity	Dimension A	Dimension B	Dimension C	Dimension D	Body Style
8	.395 [10.03]	.300 [7.62]	.400 [10.16]	.300 [7.62]	A
14	.695 [17.65]	.300 [7.62]	.400 [10.16]	.600 [15.24]	A
16	.795 [20.19]	.300 [7.62]	.400 [10.16]	.700 [17.78]	A
18	.895 [22.73]	.300 [7.62]	.400 [10.16]	.800 [20.32]	A
20	.995 [25.27]	.300 [7.62]	.400 [10.16]	.900 [22.86]	A
24	1.195 [30.35]	.300 [7.62]	.400 [10.16]	1.100 [27.94]	A
24	1.195 [30.35]	.600 [15.24]	.700 [17.78]	1.100 [27.94]	B
28	1.395 [35.43]	.300 [7.62]	.400 [10.16]	1.300 [33.02]	B
28	1.395 [35.43]	.600 [15.24]	.700 [17.78]	1.300 [33.02]	B
32	1.595 [40.51]	.600 [15.24]	.700 [17.78]	1.500 [38.10]	B
40	1.995 [50.67]	.600 [15.24]	.700 [17.78]	1.900 [48.26]	B
42	2.100 [53.34]	.600 [15.24]	.700 [17.78]	2.000 [50.80]	B
48	2.395 [60.83]	.600 [15.24]	.700 [17.78]	2.300 [58.42]	B



Body Style "A"



Body Style "B"



Inch  
[mm]

Tolerance Unless Noted			
	.0	.00	.000
inch	±.1	±.01	±.005

[ ] Dimensions for Reference Only

Note: Suitable for "lead free" wave solder only. NOT FOR REFLOW SOLDER PROCESSES.

## Ordering Information

**48XX - X00X - CP**

Contact Quantity  
(See Table)

Row Spacing:  
3 = .300 [ 7.62  
6 = .600 [ 15.24 ]  
(See Table)

Tail:  
0 = Straight  
4 = Kinked

TS-1099-B  
Sheet 2 of 2