

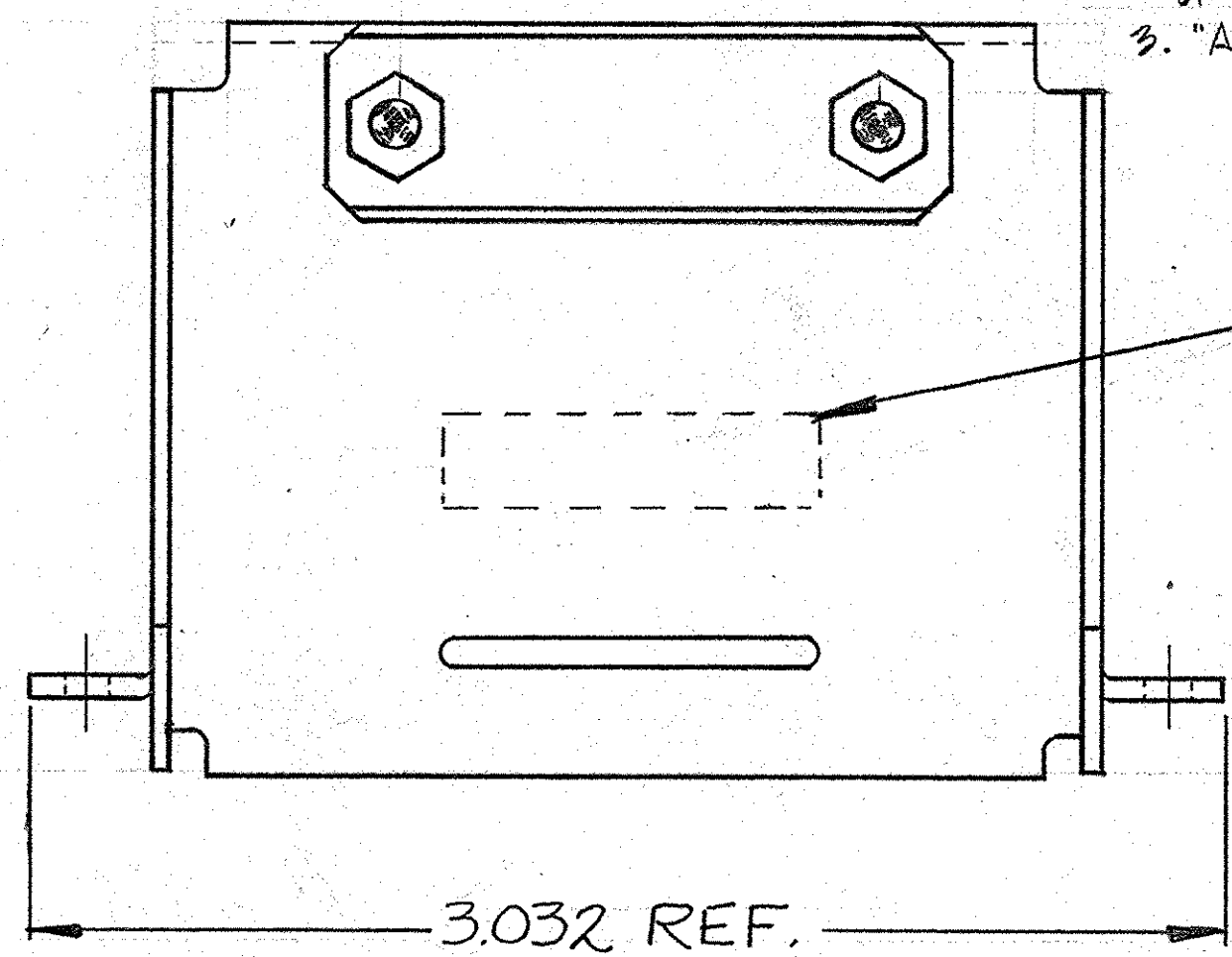
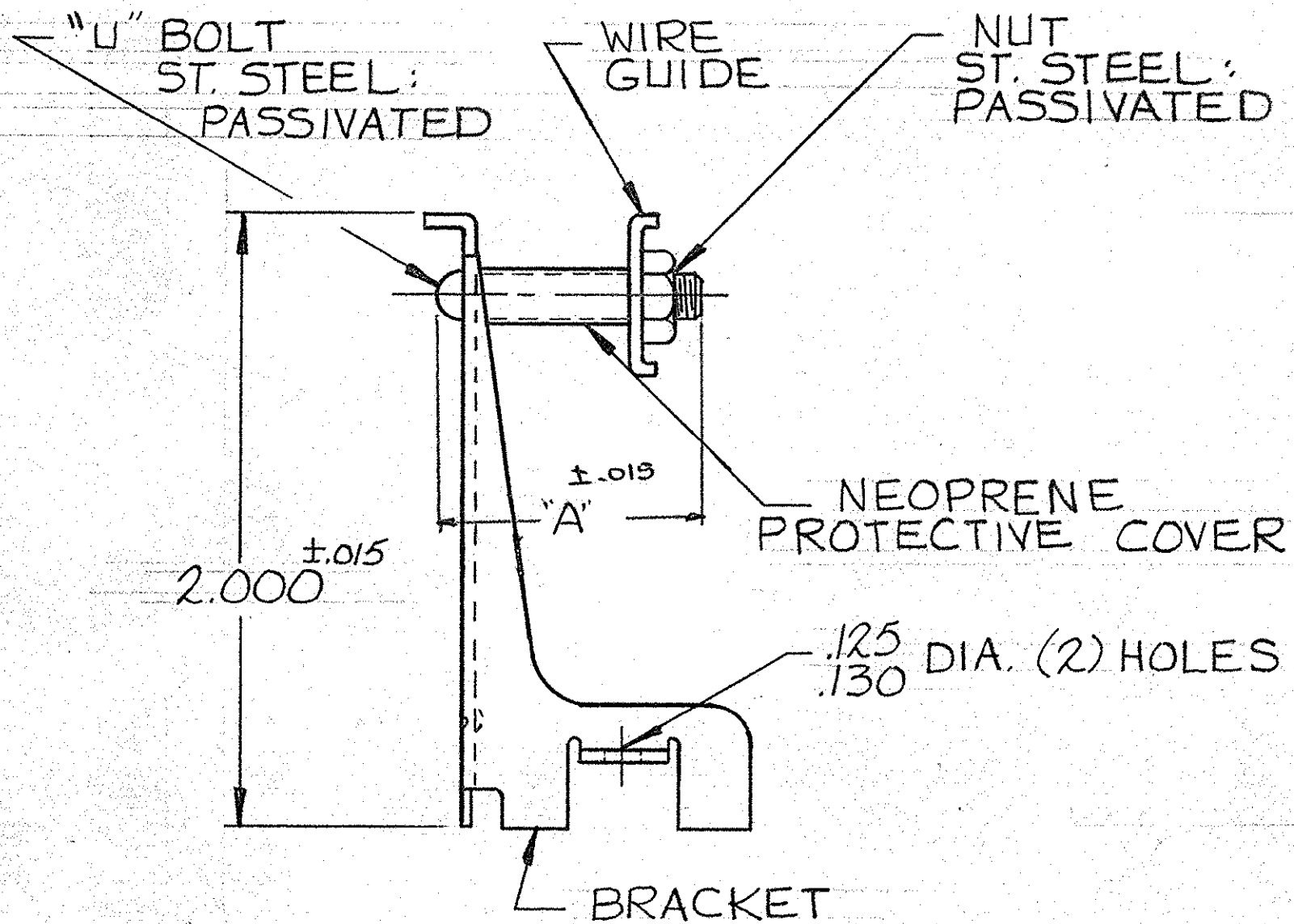
© 1964 BY AMP INCORPORATED. ALL RIGHTS RESERVED. AMP PRODUCTS COVERED BY PATENTS AND OR PATENTS PENDING. APPROVED PER GOVT CONTRACT NO.

| REVISIONS |      |                                    |            |           |
|-----------|------|------------------------------------|------------|-----------|
| SYM       | ZONE | DESCRIPTION                        | DATE       | APPROVAL  |
| 0         |      | RELEASED WAS M5001-679             | 7/6/64     | KY D.S.H. |
| A         |      | REVISED W-276                      | 5-27-65    | M.S./D.H. |
| B         |      | REMOVE PROPOSED DESIGN STAMP W-530 | 7-23-65    | M.S. RM   |
| C         |      | REVISED Y-68                       | 1-18-66    | M.S. J.H. |
| D         |      | ADDED "A" DIMEN & -2 ECN A-881     | 11/3/70    | MD SFS    |
| D1        |      | REV. PER ECN D-644                 | 8 9-17-75  | JK        |
| E         |      | REV PER ECO-05-001412              | AA 05/05   | DR        |
| F         |      | REV PER ECO-05-005359              | 11/65      | PY/DE     |
| G         |      | ECO-09-002648                      | PY 5-09    | DE        |
| H         |      | REV PER ECO 19-007987              | CT 5-23-19 | PD        |

SUPERSEDED BY 5-202567-1 202567-1 1. AS SHOWN.  
 2. "A" DIMENSION = .891

**OBSOLETE** 202567-2 1. SAME AS -1 EXCEPT:  
 2. "A" DIMENSION = 1.266

5-202567-1 1. SAME AS -1 EXCEPT:  
 2. PLATED ELECTROLESS NICKEL PER SAE-AMS-C.26074  
 .000400-.000800 THK (NO INTENTIONAL ADDITIONS  
 OF LEAD OR CHROMIUM PER AFE STD 230-700).  
 3. "A" DIMENSION = .891



NOTE:  
 © 1. ZINC PLATE PER ASTM-B-633 CLASS 3 TYPE II.  
 COLORLESS SUPPLEMENTARY CHROMATE.

|  |            |                             |                       |                                 |               |
|--|------------|-----------------------------|-----------------------|---------------------------------|---------------|
| AMP INFO   |            | NOMENCLATURE OR DESCRIPTION |                       | PART OR IDENTIFYING NO.         |               |
| LOC  | PRINT DIST | R 391 E                     |                       | LIST OF MATERIALS OR PARTS LIST |               |
| UNLESS OTHERWISE SPECIFIED DIMENSIONS ARE IN INCHES TOLERANCES ON FRACTIONS DECIMALS ANGLES ± .005 ± |            |                             | SIGNATURE             |                                 | DATE          |
| MATERIAL C. R. STEEL   |            |                             | DR K. Jones           |                                 | 6/2/64        |
| HEAT TREAT   |            |                             | CHK J.S. Heide        |                                 | 7/23/64       |
| FINISH SEE NOTE 1  |            |                             | DSGN ENGR J. Williams |                                 | 7-22-64       |
|  |            |                             | OPER CCurtis          |                                 | 7/22/64       |
|  |            |                             | DSGN APPD             |                                 | CODE IDENT NO |
|  |            |                             | OTHER APPD            |                                 | SIZE          |
|  |            |                             |                       |                                 | NUMBER        |
|  |            |                             |                       |                                 | REV           |
|  |            |                             | 00779 C               |                                 | H             |
|  |            |                             | 202567                |                                 |               |
| SCALE 2-1  |            |                             | WT                    |                                 | CALC          |
|  |            |                             | ACTUAL                |                                 | SHEET         |