

This document, including the design, configuration and mechanical features revealed herein are the sole, confidential and proprietary property of Winchester Interconnect. Reproduction or use thereof, in whole or part, is prohibited without the prior written consent of Winchester Interconnect.

REV.	DESCRIPTION	DATE	APPROVED
A	ECO-14834	2/21/2022	ASNZ

NOTES:

MATERIALS:

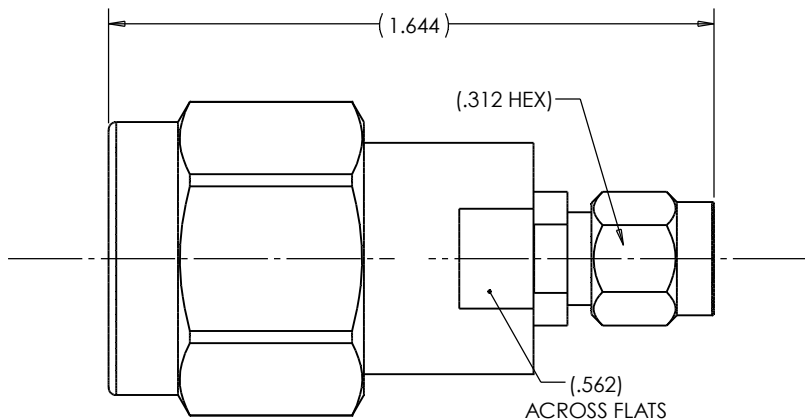
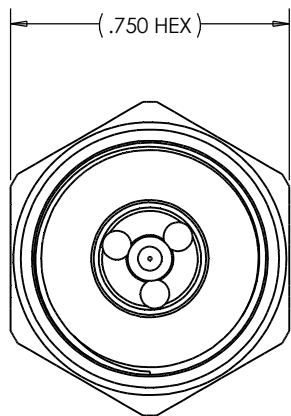
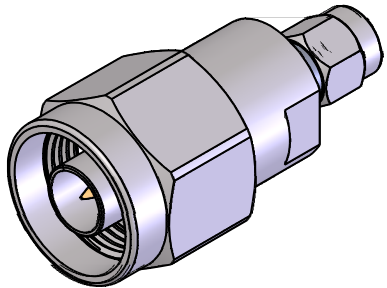
STAINLESS STEEL PER ASTM A582.
 BERYLLIUM COPPER PR ASTM B196.
 OXIDE NORYL (tm), MIL-P-46129.

FINISH:

CENTER CONDUCTORS SHALL BE GOLD PLATED PER MIL-DTL-45204D.
 TYPE II, CLASS 1 OVER NICKEL PLATE PER SAE-AMS-QQ-N-290.
 BODY AND BODY COMPONENT SHALL BE PASSIVATED PER ASTM A380.

ELECTRICALS:

NOMINAL IMPEDANCE: 50 OHMS.
 FREQUENCY RANGE: DC - 18 GHZ.
 VSWR: 1.15: 1 MAX TO 18 GHZ (PRODUCT ONLY).
 INSERTION LOSS: .05 √ F(GHZ) dB.




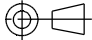
Winchester
Interconnect.

245 Lynnfield St.
Peabody, MA 01960

UNLESS OTHERWISE SPECIFIED:
DIMENSIONS ARE IN INCHES

TOLERANCES:
 .X: ±0.1
 .XX: ±0.01
 .XXX: ±0.005
 ANGLES: ±1.0°
 MACHINED SURFACES:

63/

DRAWN LRH	DATE 10/99	 Winchester Interconnect.	TITLE: TYPE N PLUG TO 3.5 mm PLUG ADAPTER
APPR.	DATE		
APPR.	DATE	dcamelio	DWG. NO. 52-922-0000-70
THIRD ANGLE PROJECTION		SIZE B	REV A
		SH 1 OF 1	