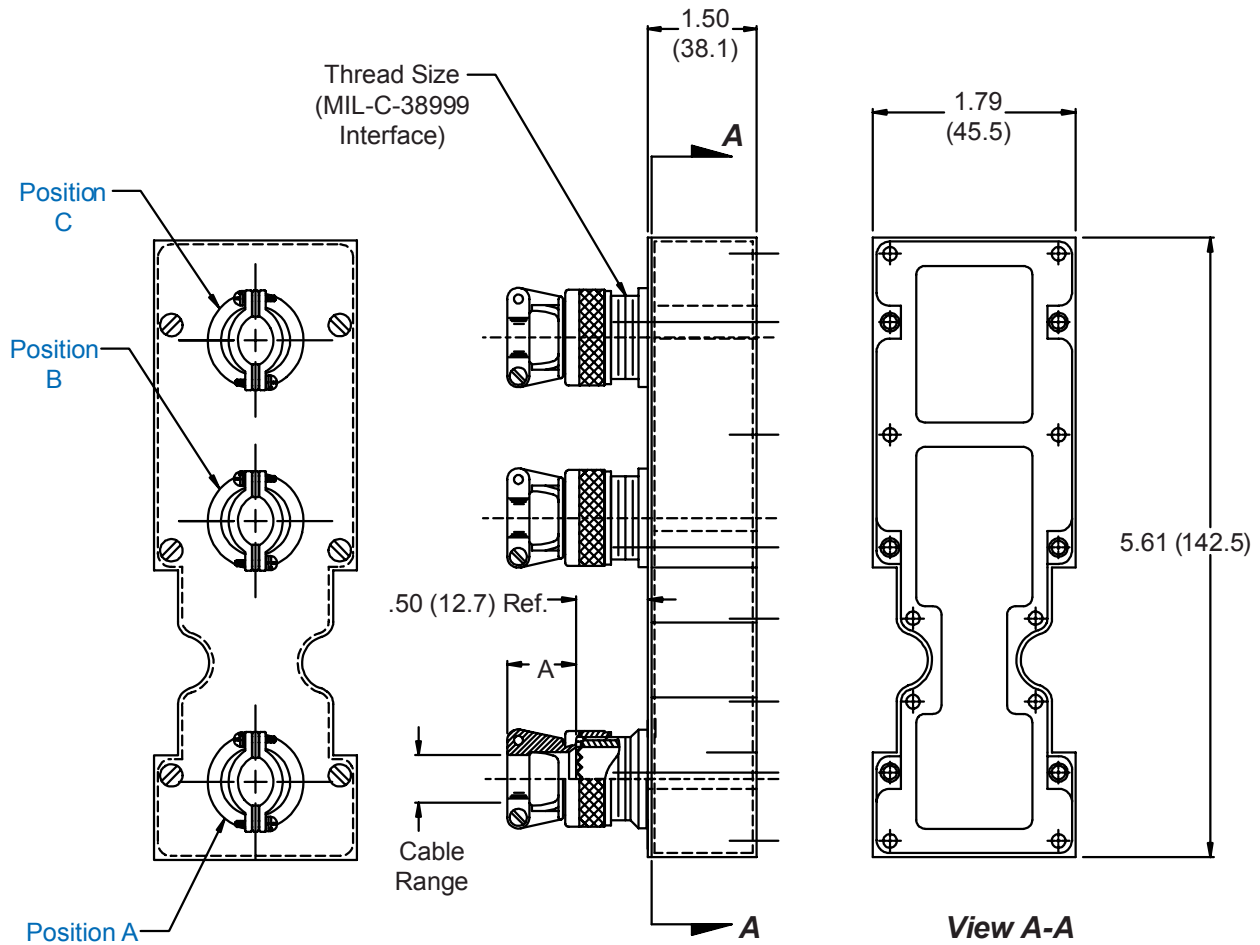


527-149
Strain Relief Backshell
for Size 2 ARINC 600 Series Connector

527-149 NF P A3 B4 C5

Basic Part No. _____
 Finish (Table II) _____
 Connector Designator (Table III) _____
 Position and Dash No. (Table I) _____
 Omit Unwanted Positions



Metric dimensions (mm) are indicated in parentheses.

527-149
Strain Relief Backshell
for Size 2 ARINC 600 Series Connector



TABLE I: CABLE ENTRY

| Dash No. | Shell Size Ref. | A Ref. | Thread Size | Cable Range | | | |
|----------|-----------------|--------------|-------------|-------------|-------------|-----|-----|
| | | | | Min | Max | Min | Max |
| 1 | 09 | .800 (20.3) | M12 X 1.0 | .098 (2.5) | .234 (5.9) | | |
| 2 | 11 | .820 (20.8) | M15 X 1.0 | .153 (3.9) | .234 (5.9) | | |
| 3 | 13 | .870 (22.1) | M18 X 1.0 | .190 (4.8) | .328 (8.3) | | |
| 4 | 15 | .840 (21.3) | M22 X 1.0 | .260 (6.6) | .457 (11.6) | | |
| 5 | 17 | .910 (23.1) | M25 X 1.0 | .283 (7.2) | .614 (15.6) | | |
| 6 | 19 | 1.000 (25.4) | M28 X 1.0 | .325 (8.3) | .634 (16.1) | | |
| 7 | 21 | 1.030 (26.2) | M31 X 1.0 | .343 (8.7) | .698 (17.7) | | |
| 8 | 23 | 1.160 (29.5) | M34 X 1.0 | .381 (9.7) | .823 (20.9) | | |

TABLE II: FINISH OPTIONS

| Symbol | Finish | Symbol | Finish |
|--------|---|---|--|
| B | Cadmium Plate/Olive Drab | NC | Zinc Cobalt/Dark Olive Drab |
| C* | Black Anodize | NF | Cadmium Plate/Olive Drab over Electroless Nickel |
| G* | Anodic Hard Coat | T | Cadmium Plate/Bright over Electroless Nickel |
| J | Gold Iridite over Cadmium Plate over Electroless Nickel | U** | Cadmium Plate/Black |
| LF | Cadmium Plate/Bright over Electroless Nickel | ZN | Zinc-Nickel Alloy/Olive Drab |
| M | Electroless Nickel | *Anodize finish is not suitable for EMI shielding or grounding applications. **Applicable to corrosion resisting steel backshells and accessories. Consult factory for other available finishes. | |
| N | Cadmium Plate/Olive Drab over Electroless Nickel | | |

TABLE III: CONNECTOR DESIGNATOR

ARINC 600 series connector backshells are designed to replace the insert retainer plates. Due to non-standard modifications by the connector manufacturer, the backshell may require special design alterations to mate properly. The following should be used to determine if a backshell modification is required. Prior to ordering, consult factory with connector part numbers not shown to ensure a proper fit.

| Connector Designator | Connector Description |
|----------------------|--|
| P | All Manufacturer's Plug and Receptacle Shells, Except for Those Listed Below (Prior to ordering, consult factory with connector part numbers not listed below to ensure a proper fit.) |
| P1 | Cannon BKAD****322 Series Plug |
| P2 | Cannon/Radiall Environmental Plug |
| P3 | Cannon/Boeing BACC 66 Plug |
| P5 | Radiall/Boeing BACC66 Plug |
| P6 | Cannon BKAC & BKAE XXX322 Series Environmental Plug |