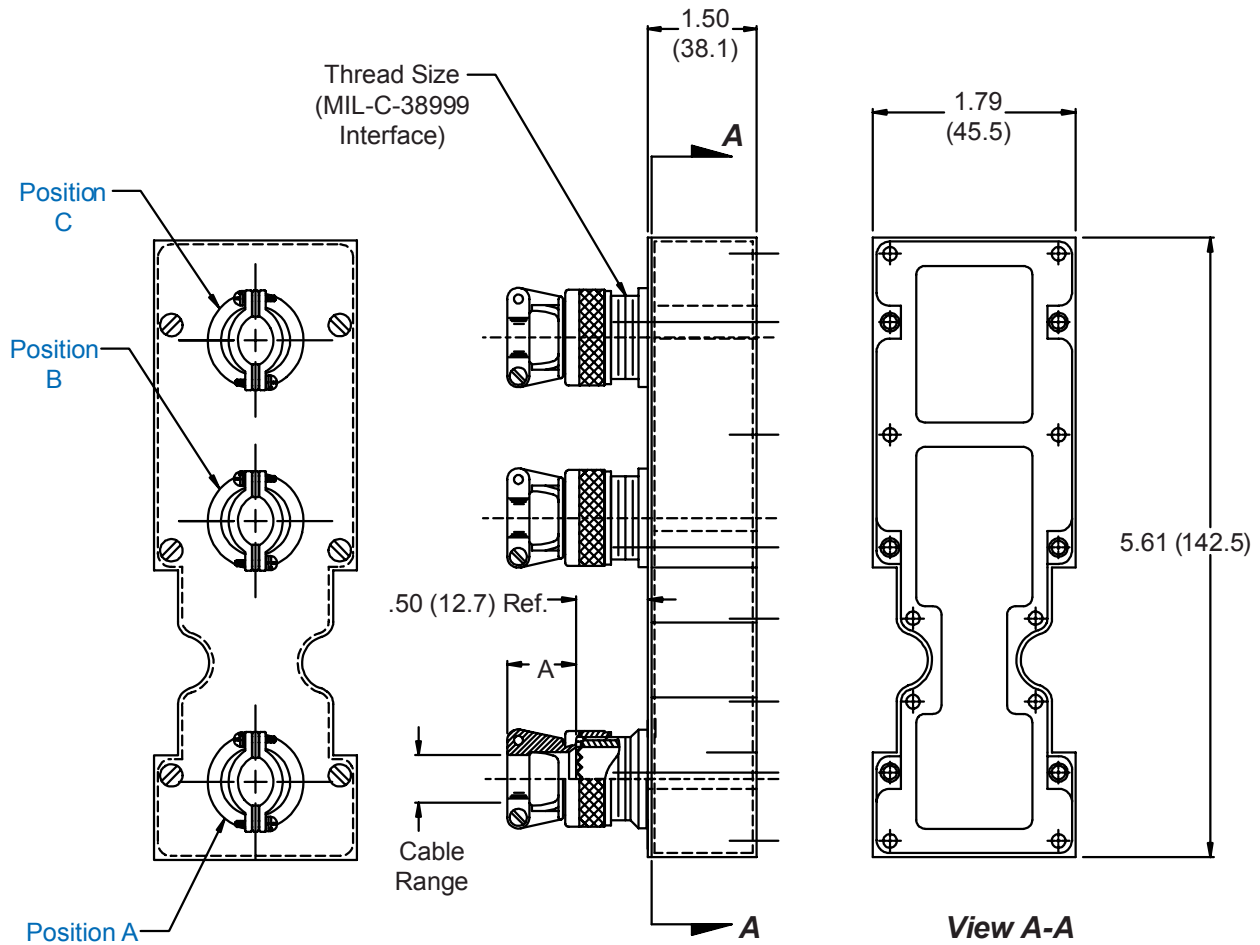


527-149
Strain Relief Backshell
for Size 2 ARINC 600 Series Connector

527-149 NF P A3 B4 C5

Basic Part No. _____
 Finish (Table II) _____
 Connector Designator (Table III) _____
 Position and Dash No. (Table I) _____
 Omit Unwanted Positions



Metric dimensions (mm) are indicated in parentheses.

527-149
Strain Relief Backshell
for Size 2 ARINC 600 Series Connector



TABLE I: CABLE ENTRY								
Dash No.	Shell Size Ref.	A Ref.	Thread Size	Cable Range				
				Min	Max	Min	Max	Min
1	09	.800	(20.3)	M12 X 1.0	.098	(2.5)	.234	(5.9)
2	11	.820	(20.8)	M15 X 1.0	.153	(3.9)	.234	(5.9)
3	13	.870	(22.1)	M18 X 1.0	.190	(4.8)	.328	(8.3)
4	15	.840	(21.3)	M22 X 1.0	.260	(6.6)	.457	(11.6)
5	17	.910	(23.1)	M25 X 1.0	.283	(7.2)	.614	(15.6)
6	19	1.000	(25.4)	M28 X 1.0	.325	(8.3)	.634	(16.1)
7	21	1.030	(26.2)	M31 X 1.0	.343	(8.7)	.698	(17.7)
8	23	1.160	(29.5)	M34 X 1.0	.381	(9.7)	.823	(20.9)

TABLE II: FINISH OPTIONS			
Symbol	Finish	Symbol	Finish
B	Cadmium Plate/Olive Drab	NC	Zinc Cobalt/Dark Olive Drab
C*	Black Anodize	NF	Cadmium Plate/Olive Drab over Electroless Nickel
G*	Anodic Hard Coat	T	Cadmium Plate/Bright over Electroless Nickel
J	Gold Iridite over Cadmium Plate over Electroless Nickel	U**	Cadmium Plate/Black
LF	Cadmium Plate/Bright over Electroless Nickel	ZN	Zinc-Nickel Alloy/Olive Drab
M	Electroless Nickel	*Anodize finish is not suitable for EMI shielding or grounding applications. **Applicable to corrosion resisting steel backshells and accessories. Consult factory for other available finishes.	
N	Cadmium Plate/Olive Drab over Electroless Nickel		

TABLE III: CONNECTOR DESIGNATOR	
<p>ARINC 600 series connector backshells are designed to replace the insert retainer plates. Due to non-standard modifications by the connector manufacturer, the backshell may require special design alterations to mate properly. The following should be used to determine if a backshell modification is required. Prior to ordering, consult factory with connector part numbers not shown to ensure a proper fit.</p>	
Connector Designator	Connector Description
P	All Manufacturer's Plug and Receptacle Shells, Except for Those Listed Below (Prior to ordering, consult factory with connector part numbers not listed below to ensure a proper fit.)
P1	Cannon BKAD****322 Series Plug
P2	Cannon/Radiall Environmental Plug
P3	Cannon/Boeing BACC 66 Plug
P5	Radiall/Boeing BACC66 Plug
P6	Cannon BKAC & BKAE XXX322 Series Environmental Plug