

This document, including the design, configuration and mechanical features revealed herein are the sole, confidential and proprietary property of Winchester Interconnect. Reproduction or use thereof, in whole or part, is prohibited without the prior written consent of Winchester Interconnect.

REV.	DESCRIPTION	DATE	APPROVED
A	ECO-12309	4/7/2020	ASNZ

NOTES:

MATERIAL:

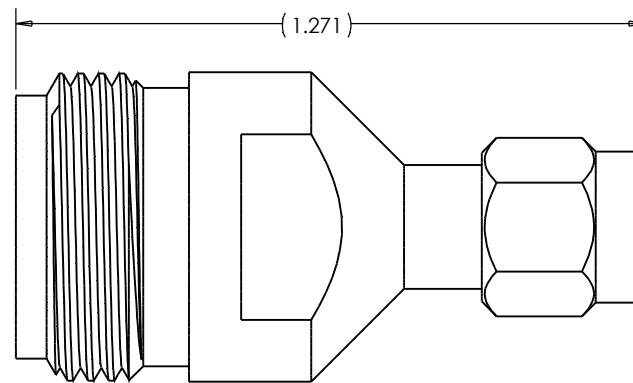
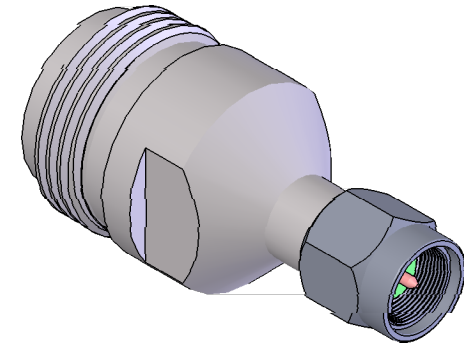
STAINLESS STEEL 303 PER ASTM A484 AND A582.
 BERYLLIUM COPPER PER ASTM B196
 PTFE FLUOROCARBON PER ASTM D1710

FINISH:

CENTER CONDUCTOR SHALL BE PLATED PER MIL-DTL-45204D
 TYPE II, CLASS 1 OVER NICKEL PLATE PER AMS-QQ-N-290.
 BODY AND BODY COMPONENTS SHALL BE PASSIVATED PER AMS-2700

ELECTRICAL REQUIREMENTS:


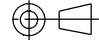
NOMINAL IMPEDANCE: 50 OHMS.
 FREQUENCY RANGE: DC- 18GHZ.
 VSWR; 1.15: 1 MAX TO 18 GHZ.
 INSERTION LOSS: .05√F (GHZ) dB.



UNLESS OTHERWISE SPECIFIED:
 DIMENSIONS ARE IN INCHES

TOLERANCES:
 .X: ±0.1
 .XX: ±0.01
 .XXX: ±0.005
 ANGLES: ±1.0°
 MACHINED SURFACES:

63/

DRAWN LMW	DATE 04/03	 Winchester Interconnect.	245 Lynnfield St. Peabody, MA 01960	
APPR.	DATE		TITLE: N JACK TO SMA PLUG	
APPR.	DATE	dcamelio		REV A
THIRD ANGLE PROJECTION		SIZE B	DWG. NO. 53-920-0000-00	
		SH 1 OF 1		