

This document, including the design, configuration and mechanical features revealed herein are the sole, confidential and proprietary property of Winchester Interconnect. Reproduction or use thereof, in whole or part, is prohibited without the prior written consent of Winchester Interconnect.

REV	DESCRIPTION	DATE	APRD
A	ECO-13227	11/124/2020	LA

MATERIALS:

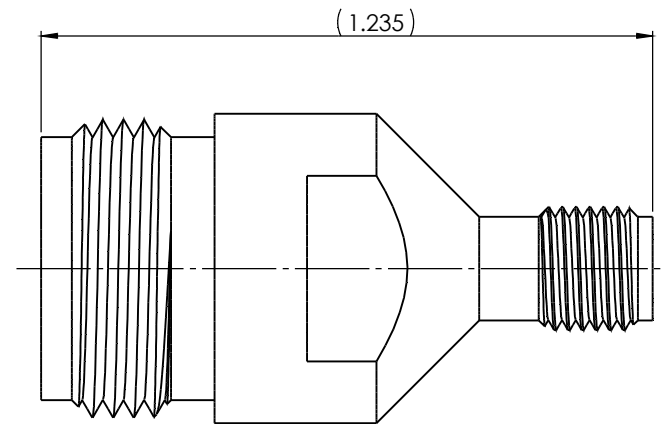
STAINLESS STEEL 303 PER ASTM A582.
 BERYLLIUM COPPER PER ASTM BT196.
 PTFE PER ASTM-D-1710.

FINISH:

CENTER CONDUCTORS AND SOLDER COMPONENTS SHALL BE GOLD PLATED PER MIL-DTL-45204D TYPE II, CLASS 1 OVER NICKEL PLATE PER AMS-QQ-N-290.
 BODY AND BODY COMPONENTS SHALL BE PASSIVATED PER AMS-2700.



ELECTRICALS:

NOMINAL IMPEDANCE: 50 OHMS
 FREQUENCY RANGE: DC TO 18 GHz.
 VSWR: 1.15 MAX.
 INSERTION LOSS: .22 dB.



UNLESS OTHERWISE SPECIFIED:
 DIMENSIONS ARE IN INCHES
 TOLERANCES:
 .X: ±0.1
 .XX: ±0.01
 .XXX: ±0.005
 ANGLES: ±1.0°
 MACHINED SURFACES:

63/

DRAWN LWM	DATE 04/03	 Winchester Interconnect. 68 Water St Norwalk, CT 06854		
APPR.	DATE			
APPR.	DATE	TITLE: N JACK TO SMA JACK		
THIRD ANGLE PROJECTION		SIZE B	DWG. NO. 53-921-0000-00	REV A
		SH 1 OF 1		

CUSTOMER OUTLINE DRAWING