

This document, including the design, configuration and mechanical features revealed herein are the sole, confidential and proprietary property of Winchester Interconnect. Reproduction or use thereof, in whole or part, is prohibited without the prior written consent of Winchester Interconnect.

REV	DESCRIPTION	BY DATE	APRDD
A	REDRAW TO CAN ONLY ER074386	8/23/18	ASNZ
B	ECO-14590	11/26/21	ASNZ

NOTES:

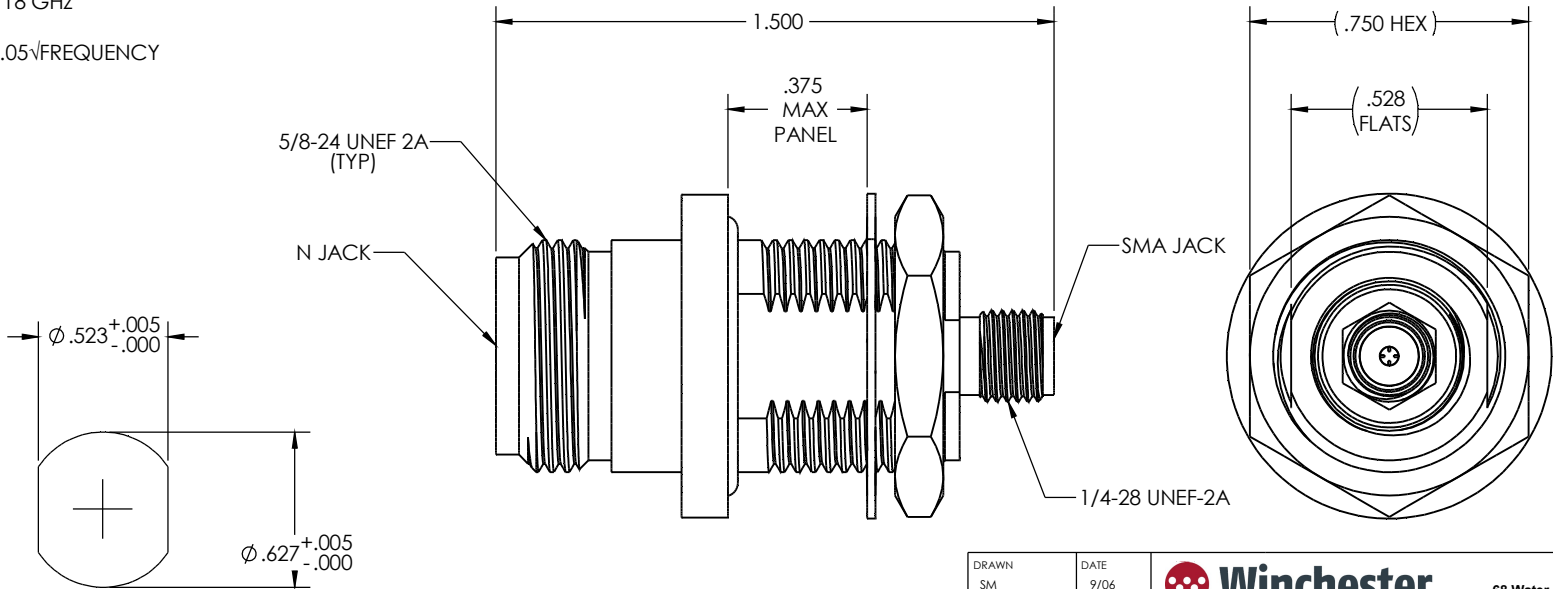
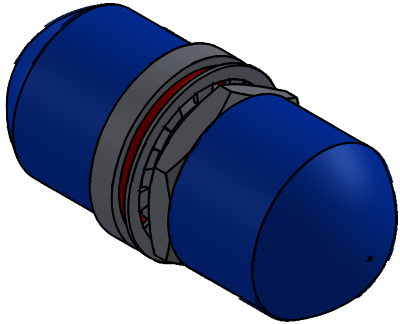
MATERIALS: SST303, PER ASTM A484 AND A582.
 BERYLLIUM COPPER PER ASTM-B-196, QQ-C-530
 PTFE FLUOROCARBON PER ASTM-D-1710 TYPE 1

FINISH: CENTER CONDUCTORS AND SOLDER COMPONENTS SHALL BE GOLD PLATED PER MIL-G-45204 OVER NICKEL PLATED PER QQ-N-290
 BODY AND BODY COMPONENTS SHALL BE PASSIVATED PER AMS 2700.

FREQUENCY: DC-18 GHz

VSWR: 1.15 TO 18 GHz

INSERTION LOSS: .05√FREQUENCY



RECOMMENDED
 PANEL CUTOUT

UNLESS OTHERWISE SPECIFIED:
 DIMENSIONS ARE IN INCHES
 TOLERANCES:
 .X: ±0.030
 .XX: ±0.010
 .XXX: ±0.005
 ANGLES: X° ±1°
 X°X': 15'
 FRACTIONAL: 1/64
 MACHINED SURFACES:
 63/

DRAWN SM	DATE 9/06	 Winchester Interconnect 68 Water Street Norwalk, CT 06854								
APPR.	DATE									
APPR.	DATE	TITLE: N JACK TO SMA JACK								
dcamelio		<table border="1"> <tr> <td>THIRD ANGLE PROJECTION</td> <td>SIZE B</td> <td>DWG. NO. 53-921-3548-00</td> <td>REV B</td> </tr> <tr> <td></td> <td>SH 1 OF 1</td> <td></td> <td></td> </tr> </table>	THIRD ANGLE PROJECTION	SIZE B	DWG. NO. 53-921-3548-00	REV B		SH 1 OF 1		
THIRD ANGLE PROJECTION	SIZE B	DWG. NO. 53-921-3548-00	REV B							
	SH 1 OF 1									