

53-953-3500-00

NOTES:

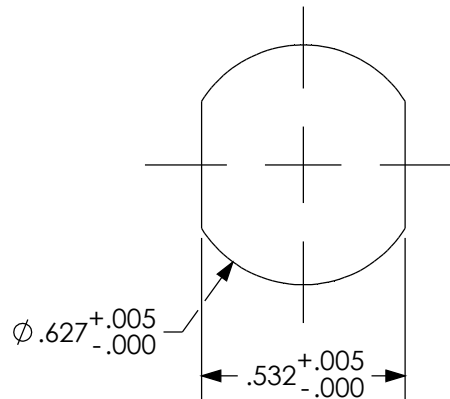
MATERIALS: SST, CORROSION-RESISTANT, NON MAGNETIC 303, PER ASTM. A484 AND A582. BERYLLIUM COPPER PER ASTM-B-196, QQ-C-530
1/2 HARD BRASS PER QQ-B-626.
PTFE FLUOROCARBON PER ASTM-D-1710.

FINISH: CENTER CONDUCTORS AND SOLDER COMPONENTS SHALL BE PLATED PER MIL-G-45204 TYPE II, CLASS 1 OVER NICKEL PLATE PER QQ-N-290.
BODY AND BODY COMPONENTS SHALL BE PASSIVATED PER ASTM A380.

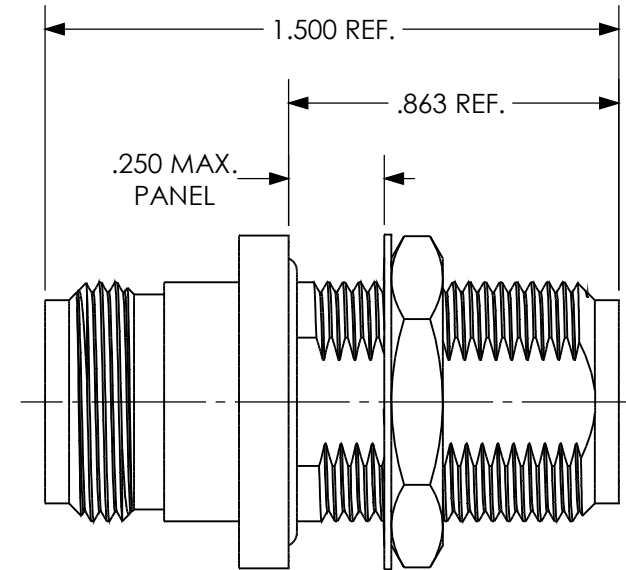
FREQUENCY: DC - 18GHz


VSWR: 1.15 TO 18GHz

INSERTION LOSS: $.05 \sqrt{\text{FREQUENCY}}$



RECOMMENDED
PANEL CUTOUT



| | | | | | | | | | |
|-----|---------------|-------|-------|---|----------------------|-----------------------------------|--|-------------------|-----------------------------------|
| LTR | DESCRIPTION | DATE | APPR. | DRAWN BF | CHECKED | USED ON 53-953-3500-00 |  SRI CONNECTOR GAGE COMPANY 3950 DOW ROAD MELBOURNE FLORIDA 32934 | | |
| - | REL | 02/03 | | APPR. | SCALE | MATERIAL | | | |
| - | MODEL CREATED | 01/15 | | UNLESS OTHERWISE SPECIFIED: 1. REMOVE ALL BURRS 2. BREAK ALL CORNERS & EDGES .005 R. MAX 3. CHAMFER 1st & LAST THREADS 45" 4. SURFACE FINISHED 32 UNLESS OTHERWISE SPECIFIED. 5. DIAMETERS ON COMMON CENTERS TO BE CONCENTRIC WITHIN .002 T.I.R. 6. ALL DIMENSIONS ARE AFTER PLATING. | | FINISH | TITLE: N JACK TO N JACK BULKHEAD | | |
| | | | | DIMENSIONS ARE IN INCHES TOLERANCES | | SIZE A | FSCM NO. OHM01 | SHEET 1 | DWG. NO. 53-953-3500-00 |
| | | | | DECIMALS .X ± .030 .XX ± .010 .XXX ± .005 | FRACTIONAL ± 1/64 | ANGULAR .X° ± 1° .X*X ± 15' | | | |