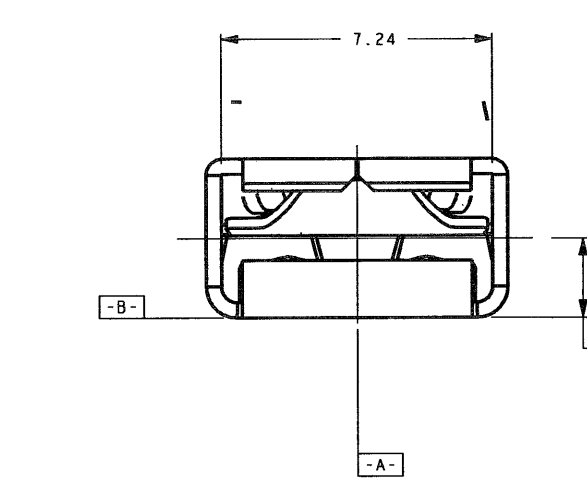
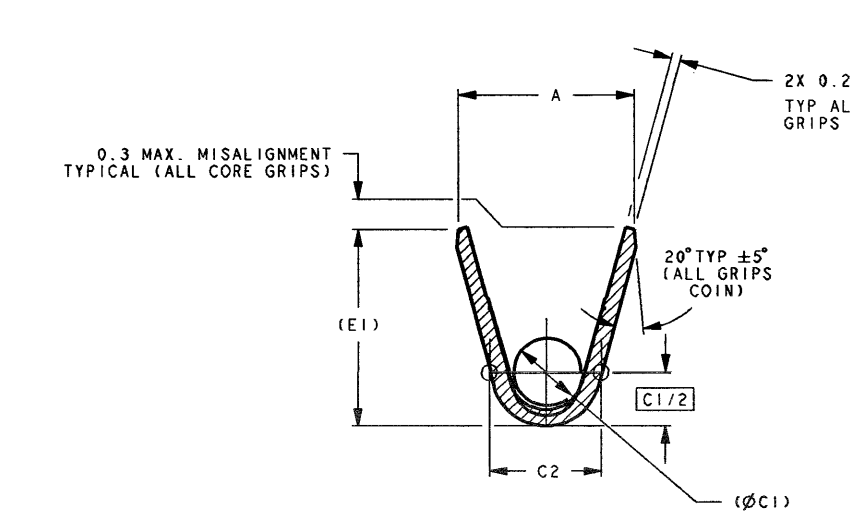


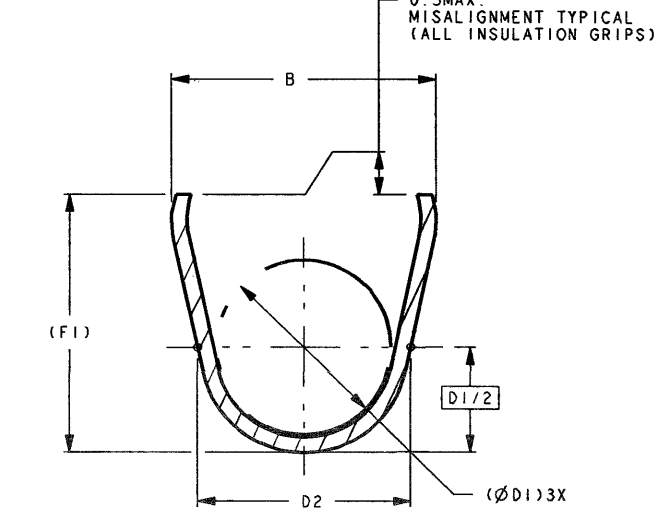
PARTIAL VIEW SECTION A-A UNSEALED CONSTRUCTION



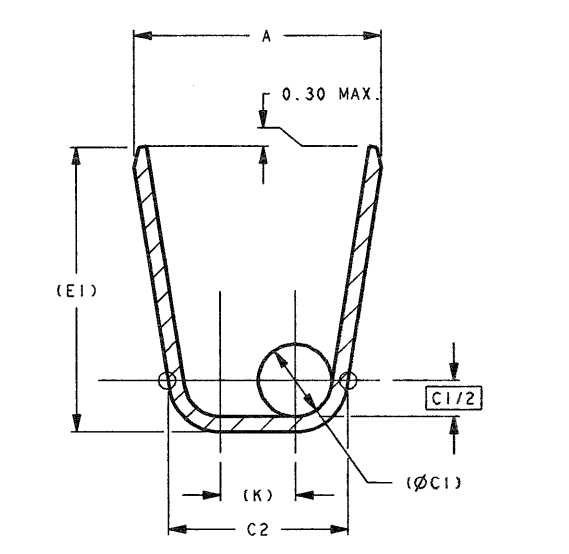
SECTION A-A SEALED CONSTRUCTION



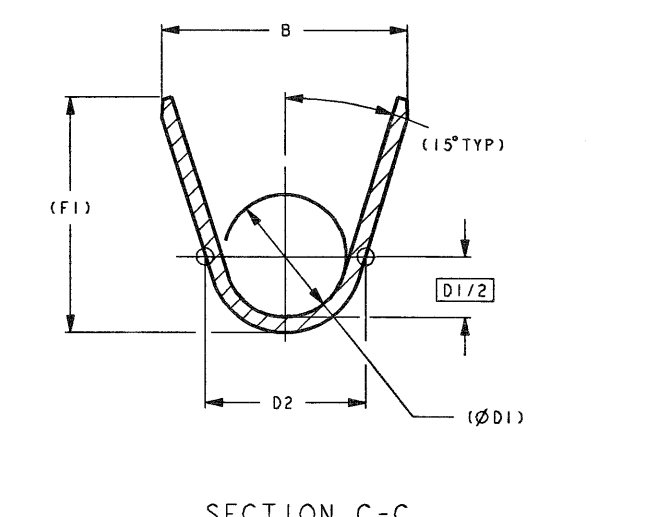
SECTION B-B FOR SEALED AND UNSEALED CONSTRUCTION CORE GRIP



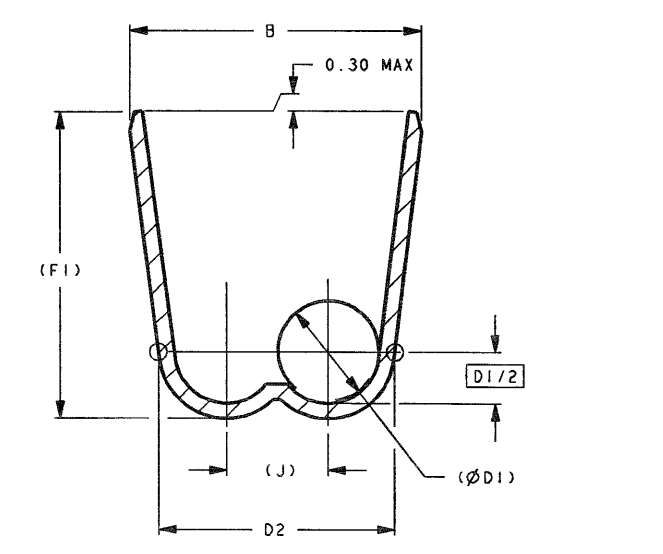
SEALED CONSTRUCTION SECTION C-C



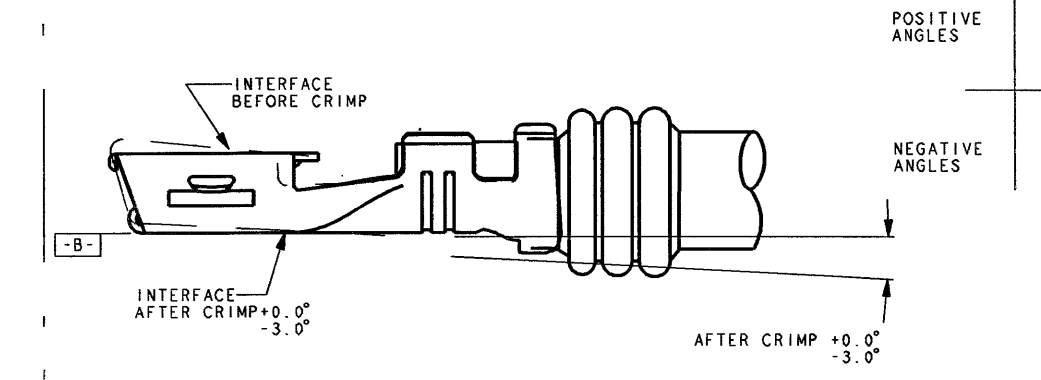
SECTION B-B CORE GRIP DOUBLE WIRE



UNSEALED CONSTRUCTION SECTION C-C



UNSEALED CONSTRUCTION DOUBLE WIRE SECTION C-C



WIRE SIZE	CONDUCTOR	INSULATION	CRIMP SPECIFICATIONS (MM)
16	18	12	2.80 1.50 B 4.45 3.80 D Y
16	18	2.80 1.50 B 4.45 4.50 D Y	
12	12	3.10 2.55 B 5.10 4.80 D Y	
10	10	3.85 2.45 B 6.10 5.10 D Y	
17	22	22 2.51 1.60 B 3.80 2.40 B N	
17	20	20 2.51 1.60 B 4.05 2.45 B N	
17	18	18 2.51 1.60 B 4.05 2.45 B N	
16	18	18 2.51 1.60 B 4.05 2.80 B N	
16	18	2.80 1.50 B 3.20 2.80 D N	
13	18	18 3.55 2.10 B 4.60 2.80 B N	
13	14	14 3.55 2.10 B 4.60 3.50 B N	
12	14	14 3.10 2.85 B 3.80 3.10 D N	
12	12	12 3.10 2.85 B 3.80 3.30 D N	
11			
10	10	3.85 2.45 B 4.60 3.70 D N	

CRIMP SPECIFICATIONS
 * SEE CHARTED P/N'S FOR APPROPRIATE WIRE SPECIFICATION
 SEE F.C. INTERLOCK PRODUCT EVALUATION LAB WAFEX TERMINAL CRIMP GUIDELINES FOR CRIMP INFORMATION THESE GUIDELINES MUST BE FOLLOWED, NOT CRIMPING TO THESE GUIDELINES MAY RESULT IN ELECTRICAL OR MECHANICAL FAILURES.
 CRIMP TOLERANCES FOR BOTH CONDUCTOR AND INSULATION CRIMPS TO BE AS FOLLOWS:
 CW CRIMP WIDTH ± 0.08
 CH CRIMP HEIGHT ± 0.05

CRIMP SPECIFICATIONS

INSERTION AND REMOVAL FORCES

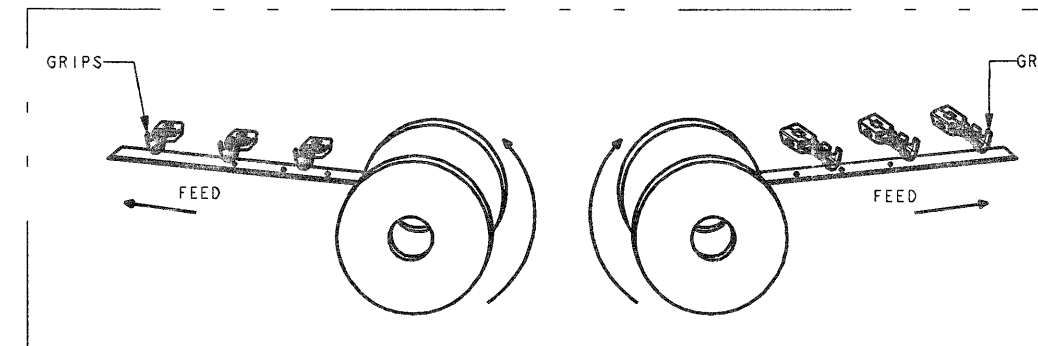
	INSERTION	1ST REMOVAL	10TH REMOVAL
TERMINAL WITHOUT GREASE	(6.0-9.0 N)	(2.0 N MIN)	(2.0 N MIN)
TERMINAL WITH GREASE	(4.7-5 N)	(2.0 N MIN)	(2.0 N MIN)

INSERTION AND REMOVAL FORCES PER ABOVE CHART ARE TO BE CHECKED USING A CARBIDE GAGE PER F.C. INTERLOCK DWG. LONG, NO TO BE SPECIFIED. FORCE MEASUREMENTS TO BE TAKEN AUTOMATICALLY AT A RATE OF 1011/min USING MECHANICAL FIXTURE WHICH IS DESIGNED TO HOLD THE GAGE BLADE RIGID, AND ALLOW THE RECEPABLE TERMINAL TO FLOAT SLIGHTLY PER F.C. INTERLOCK DWG. (T80). GAGE BLADE MUST ENTER THE RECEPABLE TERMINAL AT A MINIMUM 9.5mm

QUALITY ASSURANCE REQUIREMENTS PER CHRYSLER PS 1300: 2
 * INDICATES IN-PROCESS INSPECTION FOR MANUFACTURING DIMENSIONS OR SPECIFICATIONS: 3
 WINDING FABRICATORS MUST PURCHASE FROM SOURCES SHOWN
 CABLE SEALS SHOWN ON CHART DWG 04801100 CABLE SEALS TO BE PURCHASED FROM APPROVED SOURCES SHOWN:
 ITEM 1 MATERIAL: 0.3886, 0.13 C104 COPPER ALLOY (0.08 HALL 15M PLATED 0.0031/0.0038 THICK TENSILE STRENGTH: 413-483; MPa ELONGATION 18-51 MIN; 25 MIN.
 ITEM 2 MATERIAL: 0.2546, 0.10 C1020 TM04 (0.08 HALL 15M PLATED 0.0031/0.0038 THICK TENSILE STRENGTH: 893-892 MPa ELONGATION 18-51 MIN; 12 MIN.

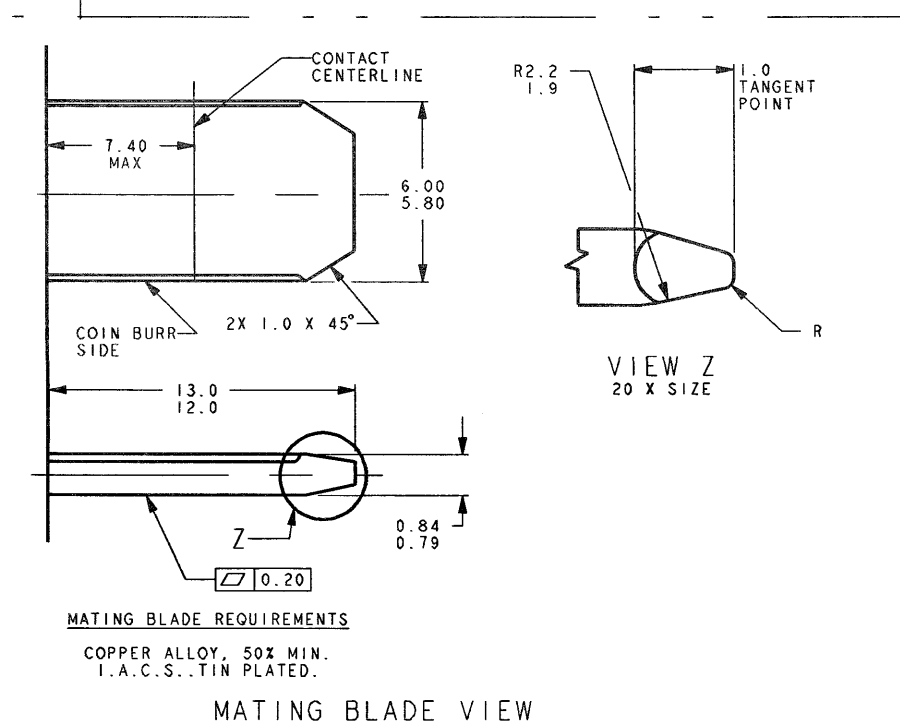
NOT TO SCALE

F.C. I. P/N	INTERLOCK P/N	DAIMLERCHRYSLER	MS3450	MS7890	MS3450	MS7890	MS3450	MS7890	MS3450	MS7890	MS3450	MS7890	MS3450	MS7890	MS3450	MS7890	MS3450	MS7890	MS3450	MS7890	MS3450	MS7890
44001226	JMS-1225-T0G	04868428AA	-----	1213.5303	1412.7691	CRIMP	12	4.6	6.9	2.0	2.9	4.6	5.6	4.8	10.70	5.7	14.70	-	-	0.6	2.1	1.95
F.C. I. P/N	INTERLOCK P/N	DAIMLERCHRYSLER	ANG1MAX O.D.)	WIRE ATTACH	GRIP CODE																	
TIN-PLATED W/ W/GREASE (ELECTRO-MATTE/HALT) CABLE SEAL			SINGLE WIRE																			
44001623	JMS-1625-T0	04801089	-----	1612.4133	1812.201	CRIMP	16	3.5	5.9	1.2	1.9	3.6	4.4	4.2	8.80	4.9	11.60	-	-	0.1	1.8	-
44001224	JMS-1225-T0	04801089	-----	1213.5303	1412.7691	CRIMP	12	4.6	6.9	2.0	2.9	4.6	5.6	4.8	10.70	5.7	14.70	-	-	0.6	2.1	1.95
44001023	JMS-1025-T0	04801089	-----	1014.0893	-----	CRIMP	10	5.6	6.8	2.4	3.4	3.2	4.2	6.1	13.50	6.2	14.45	-	-	1.1	3.0	1.30
F.C. I. P/N	INTERLOCK P/N	DAIMLERCHRYSLER	MS3450	MS7890	MS3450	MS7890	MS3450	MS7890	MS3450	MS7890	MS3450	MS7890	MS3450	MS7890	MS3450	MS7890	MS3450	MS7890	MS3450	MS7890	MS3450	MS7890
TIN-PLATED W/ W/GREASE (ELECTRO-MATTE/HALT) (MATERIALS 3 & 4) CABLE SEAL			SINGLE WIRE																			
44001871	JMU-1825-T0G	04868358AA	-----	1812.201	-----	CRIMP	18	3.8	4.2	1.5	2.3	2.0	2.9	-	4.0	8.90	-	-	0.40	1.8	-	-
44001822	JMU-1825-T0G	04868358AA	-----	1612.4133	1812.201	CRIMP	16	3.5	4.2	1.2	1.9	2.0	2.9	4.2	8.80	4.0	8.90	-	-	0.40	1.8	1.60
44001223	JMU-1225-T0G	04868358AA	-----	1213.5303	1412.7691	CRIMP	12	4.6	4.9	2.0	2.9	2.8	3.8	4.8	10.70	4.4	10.20	-	-	0.40	2.1	1.60
44001026	JMU-1025-T0G	04868358AA	-----	1014.0893	-----	CRIMP	10	5.6	6.8	2.4	3.4	3.2	4.2	6.1	13.50	6.2	14.45	-	-	0.40	3.0	-
F.C. I. P/N	INTERLOCK P/N	DAIMLERCHRYSLER	MS3450	MS7890	MS3450	MS7890	MS3450	MS7890	MS3450	MS7890	MS3450	MS7890	MS3450	MS7890	MS3450	MS7890	MS3450	MS7890	MS3450	MS7890	MS3450	MS7890
TIN-PLATED WITH W/ UNIFLOR 8913 GREASE (ELECTRO-MATTE/HALT) UNSEALED			SINGLE WIRE																			
44001870	JMU-1825-T0	0480136AA	-----	1812.201	-----	CRIMP	18	3.8	4.2	1.5	2.3	2.0	2.9	4.2	8.80	4.0	8.90	-	-	0.40	1.8	-
44001703	JMU-1725-T0	0480136AA	-----	-----	-----	CRIMP	17	4.5	5.4	1.0	2.9	1.5	3.8	3.8	8.95	4.4	10.85	1.50	1.00	0.40	T80	-
44001821	JMU-1825-T0	0480136AA	-----	1612.4133	1812.201	CRIMP	16	3.5	4.2	1.2	1.9	2.0	2.9	4.2	8.80	4.0	8.90	-	-	0.40	1.8	1.60
44001312	JMU-1325-T0	0480136AA	-----	-----	-----	CRIMP	13	5.1	6.2	1.3	3.5	1.9	4.6	5.3	12.35	5.4	13.40	1.90	1.30	0.70	T80	-
44001222	JMU-1225-T0	0480136AA	-----	1213.5303	1412.7691	CRIMP	12	4.6	4.9	2.0	2.9	2.8	3.8	4.8	10.70	4.4	10.20	-	-	0.40	2.1	1.50
44001103	JMU-1125-T0	0480136AA	-----	-----	-----	CRIMP	11	6.3	7.8	1.9	4.7	2.7	6.2	7.5	17.85	7.4	18.70	2.70	1.90	0.70	T80	1.60
44001022	JMU-1025-T0	0480136AA	-----	1014.0893	-----	CRIMP	10	5.6	6.8	2.4	3.4	3.2	4.2	6.1	13.50	6.4	14.45	-	-	0.40	3.0	-
F.C. I. P/N	INTERLOCK P/N	DAIMLERCHRYSLER	MS3450	MS7890	MS3450	MS7890	MS3450	MS7890	MS3450	MS7890	MS3450	MS7890	MS3450	MS7890	MS3450	MS7890	MS3450	MS7890	MS3450	MS7890	MS3450	MS7890
TIN-PLATED W/ W/GREASE (ELECTRO-MATTE/HALT) UNSEALED			SINGLE WIRE																			



VIEW NOT TO SCALE

EXCEPTION TO PF-9600
 1. TERMINAL IS RATED AT 50 AMPS @ 55° ROA OPEN BENCH TESTED PER PF-752.
 2. TERMINAL IS RATED AT 31 AMPS @ 20° ROA PER PF-9600.
 PACKAGING: PANCAKE REELS WITH PAPER INTERLEAF
 NOTE: CUSTOMER REQUEST FOR REWIND PARTS WILL INCLUDE AN 'RWC' AT THE END OF BILL OF MATERIAL (B.O.M.) PART NUMBER
 I.E. JMS-1025-T0-OPTION 2
 THIS PART NUMBERING SYSTEM WILL BE AVAILABLE FOR ALL B.O.M. PART NUMBERS CHARTED TO THE LEFT IN CHART.



MATING BLADE VIEW

WIRE SIZE	YAZAKI PART NO.	L.C.S. PART NO.	COLOR	FORD	DAIMLER CHRYSLER
18	E0001906	X-1053-005	YELLOW	MIL-123A	MS-8288
16	E0001905	X-1053-004	ORANGE	MIL-123A	MS-8288
14	E0001904	X-1053-003	LT. BLUE	MIL-123A	MS-8288
12	1158-3136-60	X-1067-002	GREEN	MIL-123A	MS-8288
10	E0001902	X-1053-001	RYL BLUE	APPROVED	APPROVED W/ W/ SPEC

REV	DATE	BY	CHKD	DESCRIPTION
1	10/10/02	JMS	JMS	INITIAL RELEASE
2	10/10/02	JMS	JMS	REVISION